

SPRING TRAINING TRIP. . . AVALON,
SANTA CATALINA ISLAND CALIF.

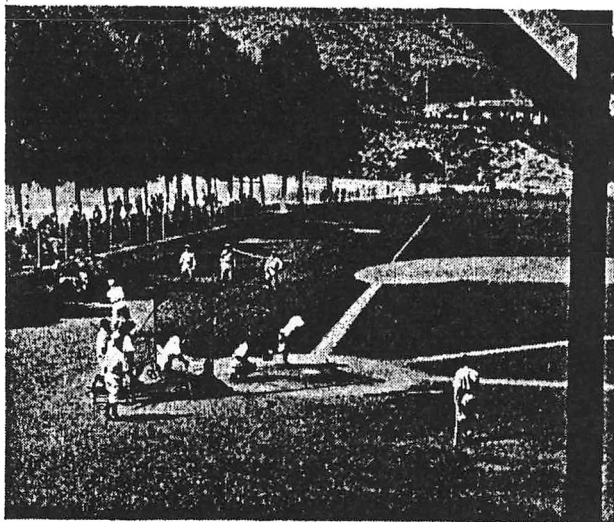


PLAYER
ROSTER

1938 TRAINING TRIP

Dates	Versus	City
Feb. 21	Mon. 1st Squad leaves Chicago for Santa Catalina Island.	
Feb. 24	Thu. Arrive at Santa Catalina Island.	
Feb. 28	Mon. 2nd Squad leaves Chicago for Santa Catalina Island.	
March 3	Thu. Arrive at Santa Catalina Island.	
March 4-17 (inclusive)	Train at Santa Catalina Island.	
March 18	Fri. Cubs vs. White Sox	at Los Angeles, Cal.
March 19	Sat. Cubs vs. Los Angeles	at Los Angeles, Cal.
March 20	Sun. Cubs vs. Pittsburgh	at Los Angeles, Cal.
March 21	Mon. Cubs vs. Pittsburgh	at Los Angeles, Cal.
March 22	Tue. Cubs vs. White Sox	at Los Angeles, Cal.
March 23	Wed. Cubs vs. White Sox	at Los Angeles, Cal.
March 24	Thu. Cubs vs. Los Angeles	at Los Angeles, Cal.
March 25	Fri. Cubs vs. Hollywood	at Los Angeles, Cal.
March 26	Sat. Cubs vs. White Sox	at Los Angeles, Cal.
March 27	Sun. Cubs vs. White Sox	at Los Angeles, Cal.
March 28	Mon. Cubs vs. Los Angeles	at Ontario, Cal.
March 29	Tue. Cubs vs. White Sox	at Los Angeles, Cal.
March 30	Wed. Cubs vs. Pittsburgh	at Los Angeles, Cal.
March 31	Thu. Cubs vs. White Sox	at Los Angeles, Cal.
April 1	Fri. Cubs vs. White Sox	at Yuma, Arizona
April 2	Sat. Cubs vs. White Sox	at Tucson, Arizona
April 3	Sun. Cubs vs. White Sox	at Tucson, Arizona
April 4	Mon. Cubs vs. White Sox	at Bisbee, Arizona
April 5	Tue. Cubs vs. White Sox	at Bisbee, Arizona
April 6	Wed. Cubs vs. White Sox	at El Paso, Texas
April 7	Thu. Cubs vs. St. Louis A.	at San Antonio, Tex.
April 8	Fri. Cubs vs. St. Louis A.	at San Antonio, Tex.
April 9	Sat. Cubs vs. St. Louis A.	at San Antonio, Tex.
April 10	Sun. Cubs vs. St. Louis A.	at San Antonio, Tex.
April 11	Mon. Cubs vs. St. Louis A.	at Ft. Worth, Texas
April 12	Tue. Cubs vs. St. Louis A.	at Wichita, Kansas
April 13	Wed. Cubs vs. St. Louis A.	at Kansas City, Mo.
April 14	Thu. Cubs vs. Moline	at Moline, Ill.
April 15	Fri. Cubs vs. White Sox	at Comiskey Park
April 16	Sat. Cubs vs. White Sox	at Wrigley Field
April 17	Sun. Cubs vs. White Sox	at Comiskey Park
April 18	Mon. Open	
April 19	Tue. Opening National League Season.	

CHAMPIONS IN THE MAKING



Cubs in Action at Santa Catalina Island

FOR the 18th consecutive year, The Chicago Cubs will condition on beautiful Santa Catalina Island 27 miles from Los Angeles harbor in the blue Pacific Ocean.

Here, with a playing field unequalled for beauty and smoothness, the Cubs enjoy the finest training site in the country.

TRAINING TRIP HOTELS

At Avalon, Santa Catalina Island,	Hotel St. Catherine
At Los Angeles	Hotel Biltmore
At Yuma	Hotel Del Sol
At Tucson	Hotel Pioneer
At Bisbee	Hotel Copper Queen
At El Paso	Hotel Paso Del Norte
At San Antonio	Hotel St. Anthony
At Ft. Worth	Hotel Texas
At Wichita	Hotel Allis
At Kansas City	Hotel President
At Moline	Hotel LeClaire

CHICAGO NATIONAL

CHARLES J. GR

ROSTER OF CHIC

Player's Name	Date of Birth	Club 1937	Position
PITCHERS			
BRYANT, CLAY	Nov. 16th, 1911	Cubs	P
CARLETON, JAMES O.	Aug. 19th, 1906	Cubs	P
DAVIS, CURTIS	Sept. 7th, 1906	Cubs	P
EPPERLY, ALBERT PAUL	May 7th, 1918	Moline, Ill.	P
FRENCH, LAWRENCE H.	Nov. 1st, 1908	Cubs	P
HIGBE, WALTER KIRBY	Apr. 8th, 1915	Moline, Ill.	P
KIMBALL, NEWEL W.	Mar. 27th, 1915	Milwaukee, Wis.	P
LEE, WILLIAM C. JR.	Oct. 21st, 1909	Cubs	P
LOGAN, ROBERT D.	Feb. 8th, 1910	Indianapolis, Ind.	P
PARMELEE, LEROY	Apr. 25th, 1907	Cubs	P
ROOT, CHARLES HENRY	Mar. 17th, 1899	Cubs	P
SHOUN, CLYDE	Mar. 20th, 1915	Cubs	P
CATCHERS			
GARBARK, ROBERT	Nov. 13th, 1910	Birmingham, Ala.	C
HARTNETT, CHARLES LEO	Dec. 20th, 1900	Cubs	C
O'DEA, JAMES KENNETH	Mar. 16th, 1913	Cubs	C
INFIELDERS			
CAVARRETTA, PHILIP	July 19th, 1917	Cubs	IF
COLLINS, JAMES ANTHONY	Mar. 30th, 1905	Cubs	IF
FREY, LINUS	Aug. 23rd, 1912	Cubs	IF
HACK, STANLEY C.	Dec. 6th, 1909	Cubs	IF
HERMAN, WILLIAM	July 7th, 1909	Cubs	IF
JURGES, WILLIAM F.	May 9th, 1908	Cubs	IF
LAZZERI, ANTHONY MARK	Dec. 6th, 1903	New York, N. Y. (AL)	IF
MESNER, STEVE	Jan. 13th, 1918	Los Angeles, Cal.	IF
MATTICK, ROBERT	Dec. 5th, 1915	Los Angeles, Cal.	IF
YORK, ANTHONY	Nov. 27th, 1912	Tulsa, Okla.	IF
OUTFIELDERS			
ASBELL, JAMES M.	June 22nd, 1914	{ Knoxville, Tenn., and Jersey City, N. J.	OF
DEMAREE, FRANK I.	June 10th, 1910	Cubs	OF
GALAN, AUGUST JOHN	May 25th, 1912	Cubs	OF
MARTY, JOSEPH ANTON	Sept. 1st, 1913	Cubs	OF
REYNOLDS, CARL N.	Feb. 1st, 1904	Minneapolis, Minn.	OF
STAINBACK, GEORGE TUCKER	Aug. 4th, 1912	Cubs	OF
TRIPLETT, H. COAKER	Dec. 18th, 1914	Memphis, Tenn.	OF

JOHN J. CORRIDEN, Coach

ROY JOHNSON, Coach

ANDREW LOTSHA

LEAGUE BALL CLUB

IMM. Manager

AGO CUBS - 1938

Bats	Throws	Weight	Height	Home Town	Averages	
					Won	Lost
R	R	191	6' 2"	Zanesville, Ohio	9	3
B	R	185	6' 1¾"	Ft. Worth, Texas	16	8
R	R	187	6' 3"	Azusa, Calif.	10	5
L	R	197	6' 2"	Glidden, Iowa	14	6
R	L	195	6' 1"	Brentwood Park, Cal.	16	10
R	R	184	5' 11"	Columbia, S. C.	21	5
R	R	190	6' 2½"	Santa Monica, Cal.	4	8
R	R	198	6' 3"	Plaquemine, La.	14	15
R	L	178	5' 11"	Humboldt, Nebr.	12	8
R	R	199	6' 1"	Lambertville, Mich.	7	8
R	R	192	5' 10½"	Los Angeles, Cal.	13	5
L	L	178	6' 1½"	Mountain City, Tenn.	7	7
					Bat.	Field.
R	R	178	5' 11"	Meadville, Pa.	.319	.984
R	R	220	6' 1"	Chicago, Ill.	.354	.996
L	R	184	6'	Lima, N. Y.	.301	.985
L	L	168	5' 11"	Chicago, Ill.	.288	.972
B	L	173	5' 9½"	Rochester, N. Y.	.274	.991
B	R	159	5' 10"	St. Louis, Mo.	.278	.938
L	R	169	5' 11¾"	Sacramento, Cal.	.297	.968
R	R	180	5' 11"	Chicago, Ill.	.335	.954
R	R	175	5' 11"	Brooklyn, N. Y.	.298	.975
R	R	170	5' 11½"	Millbrae, Calif.	.244	.966
R	R	174	5' 8"	Los Angeles, Calif.	.329	.933
R	R	178	5' 11"	St. Louis, Mo.	.279	.952
R	R	155	5' 10"	Irene, Texas	.292	.941
R	R	195	6'	San Marcos, Texas	.352	.966
R	R	185	5' 11½"	Los Angeles, Calif.	.324	.980
B	R	158	5' 11½"	Berkeley, Calif.	.252	.980
R	R	180	8'	Sacramento, Calif.	.290	.976
R	R	194	6'	Glen Flora, Texas	.355	.971
R	R	173	5' 11½"	Los Angeles, Calif.	.231	.981
R	R	185	5' 11"	Boone, N. C.	.356	.948

AW, Trainer

CLARENCE H. ROWLAND, Scout
JOHN J. DOYLE, Scout

THE CHICAGO CUBS AT A GLANCE

JAMES M. ASBELL—Drafted from Jersey City in fall of 1937. Played only 14 games with this club. With Knoxville earlier in year, hit .352, fielded .966. Attended Tulane and Rice Universities.

CLAY BRYANT—Used primarily as relief hurler past 3 years. Will see more service in coming campaign. Has great fast ball. Won 9, lost 3 in 1937.

JAMES O. CARLETON—Led regular Cub pitchers in won and lost and earned run averages last season. Sixteen wins and 8 losses ranked him 4th in National League. Pitched most complete games on Cub team.

PHILIP CAVARRETTA—Starting 4th year as Cub. Greatly improved ball player in 1937 afield and at the plate. Product of Chicago's Lane Tech. high school. Hit .286 for best mark. Played 1st base and outfield in 1937.

CURTIS DAVIS—Despite being on injured list for first 3 months of season, Curt proved one of club's most dependable pitchers by end of season. Won 10, lost 5.

JAMES ANTHONY COLLINS—Secured from St. Louis in fall of 1936. His defensive ability plugged hole in Cub infield, making it best unit in league. Hit .274, fielded .991. Broke ankle in closing stages of pennant race. Colorful, aggressive ball player.

FRANK J. DEMAREE—Led Cubs and ranked 2nd in National League in runs driven in with 115. Led Cubs in slugging with 199 hits for 298 bases. Appeared in every game for 2nd consecutive year. Hit .324. Fielded .980.

ALBERT PAUL EPPERLY—Went on 1937 spring training trip. Sent to Moline for further seasoning. Had splendid record of 14 wins and 6 defeats. Great pitching prospect for 1938.

LAWRENCE H. FRENCH—Broken hand impaired effectiveness last season. Ninth in league in won and lost column. Product of California sandlots. Colorful, heady, hard worker. Entered finance business during winter.

LINUS FREY—Showed to good advantage as utility infielder last season. Appeared in 78 games, scored 33

runs on 55 hits for .278 mark. Dependable infielder at 2nd, 3rd, or shortstop.

AUGUST JOHN GALAN—Despite disappointing year at plate, with removal of tonsils should return to 1935 form in coming campaign. Led League in base stealing in 1937 with 23 thefts. Crossed plate 14 times in 11 consecutive games for League's longest scoring stretch.

ROBERT GARBARK—Purchased from Toledo in fall of 1936. Went on spring training trip last season. Sent to Birmingham for seasoning. Much improved catcher this year. Should be valuable aid to O'Dea and Hartnett.

STANLEY C. HACK—Dependable fielder and hitter. Judged best 3rd baseman in league. Noted for ability to get on base and score. Tied Billy Herman for lead in number runs scored with 106, to place 2nd in league. Appeared in all Cub games last year.

CHARLES LEO HARTNETT—Starting 17th year as Cub receiver. Dean of major league catchers. Led National League catchers in fielding for 4th consecutive year. Has caught 100 games, or more, for 12 years, 8 of which are consecutive. Led in hitting last season with .354 mark.

WILLIAM J. HERMAN—Starting 8th year as Cub. Continues as best 2nd baseman in National League. Hit .335 in 138 games last season, to rank 7th in league. Slugging average of .479 placed him 9th in league standings.

WALTER KIRBY HIGBE—Judged brightest pitching prospect on Cub roster. Had great year with Moline, winning 21 while losing only 5. Great curve ball, good fast ball, and splendid competitive heart.

WILLIAM F. JURGES—Again proved himself one of greatest fielding shortstops by leading nearest opponent 16 points in fielding averages, with mark of .975. Had best year at plate with .298 mark. 18 points higher than 1936.

NEWEL W. KIMBALL—Good pitching prospect. At Los Angeles first of 1937 season. Recalled during early summer and sent to Milwaukee on option. Possesses good stuff.

ANTHONY MARK LAZZERI—Secured from New York Yankees past winter as aid to Mgr. Grimm and utility infielder. Great competitor. A shrewd, hustling ball player, will help Cub general play.

ROBERT MATTICK—Purchased from Los Angeles in 1937. As shortstop for Angels hit .279 and fielded .952.

Son of Chick Mattick, one-time Sox outfielder, has been reared in aura of baseball. Good arm.

STEVE MESNER—Secured from Los Angeles last year. Tried out with White Sox in spring and early summer of 1937. Hit .329 last season with Angels. Good hitter.

WILLIAM C. LEE, JR.—Despite relatively poor record last year, ranked 2nd on club in earned run averages. Led Cubs in innings pitched. Tallest man on team.

ROBERT D. LOGAN—Joined Cubs in latter part of 1937 season. With Indianapolis, won 12, lost 8. Showed so well as relief pitcher last season will undoubtedly get shot at regular turn on mound during 1938 campaign.

JOSEPH ANTON MARTY—During 1st year in majors hit .290 and fielded .976 in 88 games. Former St. Mary's athlete. Showed improvement as season progressed.

LeROY PARMELEE—Secured from St. Louis in 1936. Last season won 7, lost 8, Handicapped during 1935 by reoccurring sore arm. Possesses good curve ball and speed.

CARL N. REYNOLDS—Secured from Minneapolis during latter part of last season to bolster outfield. Veteran American League outfielder. Good hitter and dependable fielder. Graduate of Southern University.

CHARLES HENRY ROOT—Staged great comeback in 1937, winning 13 against 5 defeats. Starting 13th year as Cub hurler. Craft, control, and heart made him league leading relief pitcher. Led Cubs in won and lost percentages. Has won 175 games in Cub uniform.

CLYDE SHOUN—Used primarily as relief hurler last season. Had record of 7 wins and same number of losses. Good lefthander with lots of stuff. Should develop into regular in 1938.

GEORGE TUCKER STAINBACK—Used entirely as utility outfielder during past three seasons. Great arm, fast.

H. COAKER TRIPLETT—Secured from Memphis last fall. Had great record with that club. Led Southern Association in hitting with .356 mark. Drove in 101 runs in 152 games. Attended Appalachian State Teachers College.

ANTHONY YORK—Drafted from Tulsa Club of Texas League. Good, dependable shortstop, hit .292 last year. Fast, with splendid throwing arm. Small of stature, develops unusual power at the plate. Line drive hitter.

CHICAGO CUBS ITINERARY

- Feb. 21—First Squad leaves Chicago for Santa Catalina Island, Calif., at 10:15 P. M., via the Santa Fe Railroad
- Feb. 24—Arrive Avalon, Santa Catalina Island
- Feb. 28—Second Squad leaves Chicago for Santa Catalina Island, Calif., at 10:25 P. M., via the Chicago & Northwestern-Union Pacific R. R.
- Mar. 3—Arrive Avalon, Santa Catalina Island
- Mar. 31—Lv. Los Angeles, 9:45 P. M., S. P.
- Apr. 1—Ar. Yuma, 5:45 A. M., S. P.
- Apr. 1—Lv. Yuma, 11:00 P. M., S. P.
- Apr. 2—Ar. Tucson, 6:00 A. M., S. P.
- Apr. 3—Lv. Tucson, 11:00 P. M., S. P.
- Apr. 4—Ar. Bisbee, 2:30 A. M., S. P.
- Apr. 5—Lv. Bisbee, 11:30 P. M., S. P.
- Apr. 6—Ar. El Paso, 6:00 A. M., S. P.
- Apr. 6—Lv. El Paso 8:15 P. M.
- Apr. 7—Ar. San Antonio 3:20 P. M.
- Apr. 10—Lv. San Antonio, 11:00 P. M., I. G. N.
- Apr. 11—Ar. Ft. Worth, 7:00 A. M., I. G. N.
- Apr. 11—Lv. Ft. Worth, 10:00 P. M., Rock Island
- Apr. 12—Ar. Wichita, 7:30 A. M., Rock Island
- Apr. 13—Lv. Wichita, 12:45 A. M., Rock Island
- Apr. 13—Ar. Kansas City, 7:15 A. M., Rock Island
- Apr. 13—Lv. Kansas City, 9:00 P. M., Rock Island
- Apr. 14—Ar. Moline, 5:00 A. M., Rock Island
- Apr. 14—Lv. Moline, 5:43 P. M., Rock Island
- Apr. 14—Ar. Chicago, 9:55 P. M.

Cubs Headquarters During 1938 Championship Season

Boston	Hotel Copley-Plaza
Brooklyn	Hotel Commodore, New York, N. Y.
Cincinnati	Hotel Netherland Plaza
New York	Hotel Commodore
Philadelphia	Hotel Benjamin Franklin
Pittsburgh	Hotel Schenley
St. Louis	Hotel Chase

