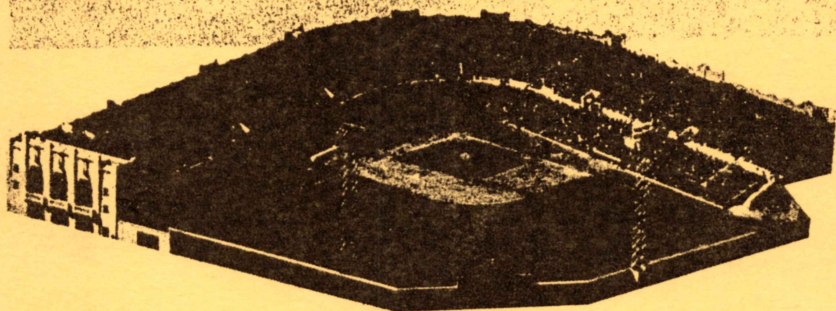
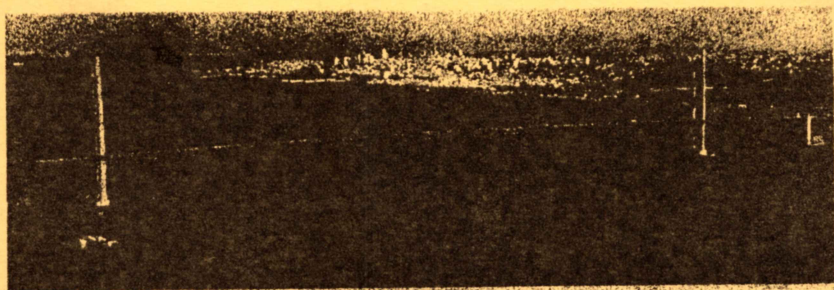


PRESS · RADIO · TV



SAN FRANCISCO

Giants



1958



SAN FRANCISCO



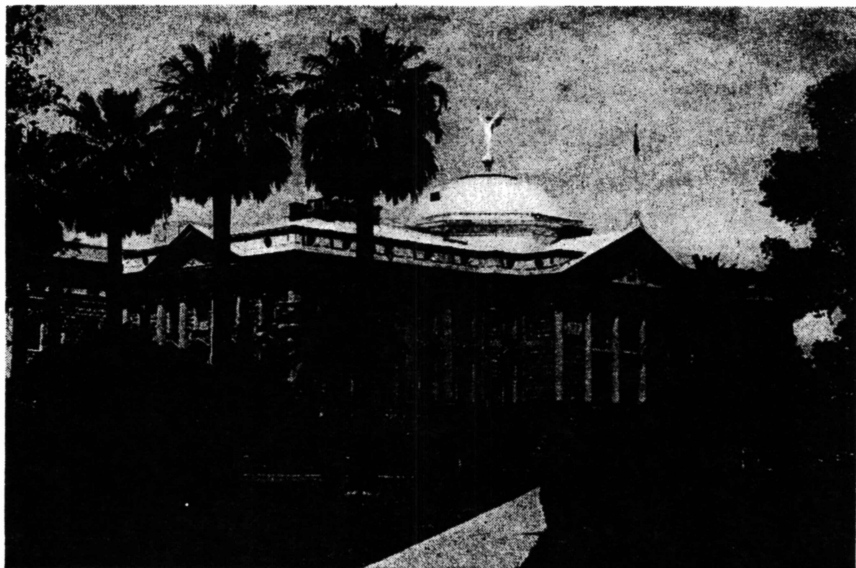
**PRESS
RADIO
TV**

SPRING TRAINING BASE—PHOENIX, ARIZONA

Spring Training Headquarters—Hotel Adams

Telephone—Alpine 3-1131

Reporting Date — February 24, 1958



Arizona State Capitol, Phoenix

THE SAN FRANCISCO GIANTS CLUB DIRECTORY

President—HORACE C. STONEHAM

Vice President—CHARLES S. FEENEY

Vice President—CHARLES H. STONEHAM

Treasurer—EDGAR P. FEELEY

Secretary—EDWARD T. BRANNICK

Manager—BILL RIGNEY

Coaches—HERMAN FRANKS, F. J. "SALTY"
PARKER, WES WESTRUM

Business Manager—JERRY DONOVAN

Farm System Director—CARL HUBBELL

Administrative Secretary Farm System—
JACK SCHWARZ

Supervisor Minor League Pitching Personnel—
FRANK SHELLENBACK

Promotion—GARRY SCHUMACHER

Speaker's Bureau—WALTER MAILS

Ticket Manager—PETER M. HOFFMANN

Radio, TV Announcer—RUSS HODGES

NOTE

For additional information, pictures and other press or radio-television assistance, contact Garry Schumacher, San Francisco Giants, Seals Stadium, 16th and Bryant Streets. Telephone MArket 1-2471.

SAN FRANCISCO GIANTS 1958 ROSTER

PITCHERS (18)

No.	Birth	Ht.	Wt.	T	B	1957 Club	Birthplace	Residence
43	Antonelli, John	4-19-30	6	190	L	L	New York	Rochester, N. Y.
39	Barclay, Curt	8-22-31	6-3	205	R	R	New York	Chicago, Ill.
34	Bowers, Thomas	4- 4-34	6	170	R	R	Dallas	Dallas, Tex.
33	Broglio, Ernie	8-27-35	6-2	200	R	R	Dallas	Berkeley, Calif.
35	Burnside, Peter	7- 2-30	6-2	190	L	R	Minneapolis-N. Y.	Evanston, Ill.
48	Constable, Jim	6-14-33	6-1	185	L	R	Minneapolis-N. Y.	Jonesboro, Tenn.
44	Crone, Ray	8- 7-31	6-1	190	R	R	Milwaukee-N. Y.	Memphis, Tenn.
31	Giel, Paul	9-29-32	5-11	180	R	R	N. D. I.	Winona, Minn.
28	Gomez, Ruben	7-13-27	6	175	R	R	New York	Arroyo, P. R.
42	Grissom, Marvin	3-31-18	6-2	205	R	R	New York	Los Molinas, Calif.
45	Jolly, Dave	10-14-24	6	165	R	R	Milwaukee	Stony Point, N. C.
38	Margoneri, Joe	1-13-30	6	180	L	L	Minneapolis-N. Y.	Smithton, Pa.
40	McCormick, Mike	9-29-38	6-2	185	L	L	New York	Pasadena, Calif.
37	Miller, Stu	12-26-27	5-11	165	R	R	New York-Minn.	Northampton, Mass.
41	Monzant, Ramon	1- 4-33	6-1	165	R	R	New York	Maracaibo, Venez.
36	Shipley, Joseph	5- 9-35	6-3	190	R	R	Springfield-Minn.	Morristown, Tenn.
32	Worthington, Allan	2- 5-30	6-2	205	R	R	New York	Birmingham, Ala.
51	Zanni, Dominic	3- 1-32	5-11	175	R	R	Louisville	New York, N. Y.

CATCHERS (5)

No.	Birth	Ht.	Wt.	T	B	1957 Club	Birthplace	Residence
5	Katt, Ray	5-9-27	6-1	200	R	R	New Braunfels, Tex.	New Braunfels, Tex.
8	McCardell, Roger	8-29-32	6	200	R	R	Gorsuch Mills, Md.	Rising Sun, Md.
6	Schmidt, Bob	4-22-33	6-2	195	R	R	St. Louis, Mo.	Overland, Mo.
47	Testa, Nick	6-29-28	5-9	170	R	R	New York, N. Y.	New York, N. Y.
7	Thomas, Valmy	10-21-30	5-11	190	R	R	Virgin Islands	St. Croix, V. I.

INFIELDERS (9)

16	Bressoud, Ed	5-2-32	6-1	175	R	R	New York-Minn.	Los Angeles, Calif.
12	Castleman, Foster	1-1-31	5-11	180	R	R	Nashville, Tenn.	Belmond, Iowa
14	Harris, Gail	10-15-31	5-11	195	L	L	Abingdon, Va.	Abingdon, Va.
10	Jablonski, Ray	12-17-26	6	200	R	R	Chicago, Ill.	Chicago, Ill.
25	Lockman, Carroll	7-25-26	6	180	R	L	Lowell, N. C.	Charlotte, N. C.
19	O'Connell, Dan	1-21-29	5-11	185	R	R	Patterson, N. J.	Patterson, N. J.
15	Rodgers, Andre	12-2-34	6-3	180	R	R	Nassau, Bahamas	Nassau, Bahamas
20	Spencer, Daryl	7-13-29	6-2	190	R	R	Wichita, Kansas	Wichita, Kansas
17	Virgil, Ossie	5-17-33	6	175	R	R	Dominican Republic	New York, N. Y.

OUTFIELDERS (7)

29	Kirkland, Willie	2-17-34	6-1	185	R	L	N. D. I.	Detroit, Mich.
24	Mays, Willie	5-6-31	5-11	180	R	R	New York	Westfield, Ala.
22	Mueller, Don	4-14-27	6	180	R	L	New York	St. Louis, Mo.
26	Rhodes, Jim	5-13-27	6	180	R	L	New York	Mathews, Ala.
27	Sauer, Hank	3-17-19	6-3	195	R	R	New York	Pittsburgh, Pa.
21	Taussig, Don	2-19-32	6	180	R	R	Dallas	New York, N. Y.
23	Thomson, Bob	10-25-23	6-2	190	R	R	Milwaukee-N. Y.	Edinburgh, Scotland

National Defense Service—Jack Brandt, John Fitzgerald, Bill White.

Manager—Bill Rigney, 18.

Coaches—Herman Franks, 3; Francis J. Parker, 2; Wes Westrum, 9.

Trainer—Frank Bowman.

Clubhouse Custodian—Edward Logan.

PLAYER RECORDS

PITCHERS

JOHN ANTONELLI

Year	Club	G	CG	IP	W	L	H	SO	BB	ER	ERA.
1948	Boston	4	0	4	0	0	2	0	3	1	2.25
1949	Boston	22	3	96	3	7	99	48	42	38	3.56
1950	Boston	20	2	59	2	3	81	33	22	38	5.80
1953	Milwaukee	31	11	175	12	12	167	131	71	62	3.19
1954	New York	39	18	259	21	7	209	152	94	66	2.29
1955	New York	38	14	235	14	16	206	143	87	87	3.33
1956	New York	41	15	258	20	13	225	145	85	82	2.86
1957	New York	40	8	212	12	18	228	114	67	89	3.78

CURTIS BARCLAY

Year	Club	G	CG	IP	W	L	H	SO	BB	ER	ERA.
1952	Knoxville	9	5	61	4	4	58	41	27	20	2.93
1954	Danville, Va.	35	23	248	19	11	238	129	77	87	3.16
1955	Sioux City	32	22	219	16	11	264	99	49	96	3.95
1956	Minneapolis	37	7	195	15	11	209	91	59	89	4.11
1957	New York	37	5	183	9	9	196	67	48	70	3.44

THOMAS BOWERS

Year	Club	G	CG	IP	W	L	H	SO	BB	ER	ERA.
1955	Dallas	19	2	63	6	3	58	33	40	23	3.29
1956	Dallas	31	14	229	17	7	200	96	82	77	3.03
1957	Dallas	35	15	250	20	8	226	100	84	93	3.35

ERNIE BROGLIO

Year	Club	G	CG	IP	W	L	H	SO	BB	ER	ERA.
1953	Oakland	11	2	47	4	2	68	21	33	36	6.80
1954	Oakland	25	2	72	5	8	69	30	50	41	4.92
1954	Modesto	14	7	98	9	3	82	99	60	33	3.03
1955	Stockton	32	25	252	20	10	211	230	137	96	3.43
1956	Johnstown	31	8	153	6	12	149	101	81	75	4.41
1957	Dallas	34	16	222	17	6	171	120	90	63	2.55

PETER BURNSIDE

Year	Club	G	CG	IP	W	L	H	SO	BB	ER	ERA.
1949	St. Cloud	1	0	2	0	1	1	3	8	0	0.00
1950	St. Cloud	12	1	42	2	6	40	48	60	47	10.07
1951	Knoxville	14	5	91	6	7	70	125	102	43	4.25
1951	Ottawa	4	1	14	0	3	16	7	16	12	7.71
1952	Nashville	9	1	40	2	3	40	32	38	22	4.95
1952	Minneapolis	1	0	2	0	1	1	2	7	3	13.50
1954	Nashville	19	5	97	6	4	112	68	62	55	5.10
1955	Dallas	37	17	255	18	11	182	233	118	70	2.48
1955	New York	2	1	13	1	0	10	2	8	4	2.54
1956	Minneapolis	22	4	113	5	9	127	71	54	58	4.62
1957	New York	10	1	31	1	4	47	18	13	30	8.71
1957	Minneapolis	20	9	131	10	5	101	115	52	36	2.47

JIM CONSTABLE

Year	Club	G	CG	IP	W	L	H	SO	BB	ER	ERA.
1951	Knoxville	1	0	6	0	0	0	0	0	0	0.00
1951	Oshkosh	8	6	60	5	1	48	54	26	19	2.85
1952	Knoxville	34	15	172	9	10	145	147	110	70	3.66
1952	Nashville	9	3	49	5	1	52	25	4	12	2.20
1953	Nashville	41	12	230	19	13	241	183	89	93	3.64
1954	Minneapolis	37	7	197	10	13	199	114	86	96	4.39
1955	Minneapolis	45	7	199	12	9	204	156	102	101	4.57
1956	Minneapolis	37	2	167	10	10	174	114	74	68	3.66
1956	New York	3	0	4	0	0	9	1	7	7	15.75
1957	Minneapolis	10	1	45	3	2	56	26	18	24	4.80
1957	New York	16	0	28	1	1	27	13	7	9	2.89

RAY CRONE

Year	Club	G	CG	IP	W	L	H	SO	BB	ER	ERA.
1949	Owensboro	14	—	89	9	3	76	102	48	29	2.73
1950	Evansville	31	—	164	11	9	156	77	83	66	3.62
1951	Hartford	28	—	155	12	7	178	63	70	68	3.95
1952	Atlanta	6	—	19	1	2	33	10	8	19	9.00
1952	Hartford	27	—	162	12	11	159	99	58	61	3.40
1953	Jacksonville	33	—	253	19	11	200	174	104	67	2.38
1954	Milwaukee	19	—	49	1	0	44	33	19	11	2.02
1954	Toledo	14	—	87	7	3	73	59	35	29	3.00
1955	Toledo	4	—	36	4	0	73	29	13	3	0.75
1955	Milwaukee	33	—	140	10	9	117	76	42	54	3.47
1956	Milwaukee	35	—	170	11	10	173	73	44	73	3.86
1957	Milwaukee-New York	36	4	163	7	9	185	71	55	79	4.36

PAUL GIEL

Year	Club	G	CG	IP	W	L	H	SO	BB	ER	ERA.
1954	New York	6	0	4	0	0	8	4	2	4	9.00
1955	New York	34	0	81	4	4	70	47	49	31	3.40

RUBEN GOMEZ

Year	Club	G	CG	IP	W	L	H	SO	BB	ER	ERA.
1949	Bristol	11	3	48	5	1	44	86	68	15	2.81
1950	Bristol	3	1	15	1	0	13	7	16	11	5.82
1950	St. Jean	26	17	180	14	4	174	140	86	78	3.89
1951	Havana	4	2	31	1	2	30	19	19	15	4.35
1951	St. Jean	28	13	153	12	6	155	135	81	75	4.41
1952	Kansas City	5	0	10	1	0	16	4	6	13	1.17
1953	New York	29	13	204	13	11	166	113	101	77	3.40
1954	New York	37	10	222	17	9	202	106	109	71	2.88
1955	New York	33	9	185	9	10	207	79	69	94	4.57
1956	New York	40	4	196	7	17	191	76	85	100	4.59
1957	New York	38	16	238	15	13	233	92	71	100	3.78

MARVIN GRISSOM

Year	Club	G	CG	IP	W	L	H	SO	BB	ER	ERA.
1941	S. Bernard	10	3	52	2	4	72	25	27	27	4.67
1946	Jersey City	34	5	19	4	10	105	75	81	55	4.16
1946	New York (N)	4	0	19	0	2	17	9	13	9	4.26
1947	Minneapolis	37	7	151	9	16	162	92	89	5	6.26
1948	Sacramento	38	11	190	11	7	92	95	83	85	4.03
1949	Detroit	27	0	39	2	4	56	17	34	28	6.46
1950	Toledo	28	8	156	9	10	157	99	54	60	3.46
1951	Seattle	34	20	252	20	11	193	146	100	85	3.04
1952	Chicago (A)	28	7	166	12	10	156	97	79	69	3.74
1953	Boston (A)	13	1	59	2	6	61	31	30	34	4.73
1953	New York	21	3	84	4	2	83	46	31	37	3.96
1954	New York	56	1	122	10	7	100	64	50	32	2.36
1955	New York	55	0	89	5	4	76	49	46	29	2.93
1956	New York	43	0	81	1	1	71	49	16	14	1.56
1957	New York	55	0	83	4	4	74	51	23	24	2.60

DAVE JOLLY

Year	Club	G	CG	IP	W	L	H	SO	BB	ER	ERA.
1946	Mooreville	12	—	75	5	3	56	46	36	23	2.76
1947	Mooreville	24	—	185	14	7	182	143	58	68	3.31
1948	Tulsa	16	—	59	3	5	61	39	40	26	3.97
1948	Columbia	9	—	65	4	2	53	32	31	17	2.35
1949	Tulsa	37	—	202	12	7	181	124	122	99	4.41
1950	Syracuse	32	—	146	5	11	162	73	76	70	4.32
1951	Tulsa	37	—	220	9	13	224	97	107	102	4.17
1952	Kansas City	40	—	82	6	1	64	52	61	32	3.52
1953	Milwaukee	24	—	38	0	1	34	23	27	15	3.55
1954	Milwaukee	47	—	111	11	6	87	62	64	30	2.43
1955	Milwaukee	36	—	58	2	3	58	23	51	37	5.74
1956	Milwaukee	29	—	46	2	3	39	20	35	19	3.72
1957	Milwaukee	23	—	38	1	1	37	27	21	21	4.97

JOE MARGONERI

Year	Club	G	CG	IP	W	L	H	SO	BB	ER	ERA.
1950	Oshkosh	30	24	227	23	4	156	288	138	68	2.70
1951	Sunbury	30	17	207	18	8	153	212	122	55	2.39
1954	Nashville	37	9	197	14	10	186	184	124	103	4.71
1954	Minneapolis	3	1	13	1	0	7	6	12	2	1.38
1955	Minneapolis	26	5	119	9	6	135	85	59	68	5.14
1956	Minneapolis	7	2	39	3	3	31	19	20	13	3.00
1956	New York	23	2	92	6	6	88	49	52	40	3.91
1957	New York	13	1	34	1	1	44	18	21	20	5.29
1957	Minneapolis	25	6	132	9	10	156	71	64	71	4.83

MIKE McCORMICK

Year	Club	G	CG	IP	W	L	H	SO	BB	ER	ERA.
1956	New York	3	0	7	0	1	7	4	10	7	9.00
1957	New York	24	1	75	3	1	79	50	32	34	4.08

STU MILLER

Year	Club	G	CG	IP	W	L	H	SO	BB	ER	ERA.
1949	Salisbury	29	—	151	8	13	142	97	90	72	4.29
1950	Hamilton	37	—	244	16	13	235	154	93	87	3.21
1951	Omaha	11	—	32	0	0	25	18	15	16	4.50
1951	Winston-Salem	30	—	178	13	10	150	111	59	57	2.88
1952	St. Louis	12	—	88	6	3	63	64	26	20	2.05
1952	Columbus	28	—	119	11	5	113	82	38	31	2.34
1953	St. Louis	40	—	138	7	8	161	79	47	85	5.54
1954	St. Louis	19	—	47	2	3	55	22	29	30	5.74
1954	Columbus	22	—	133	7	8	107	53	118	45	3.05
1955	Omaha	39	—	244	17	14	224	111	161	82	3.02
1956	St. Louis-Philadelphia	27	—	114	5	9	124	71	60	57	4.50
1957	Minneapolis	7	4	51	3	3	40	26	19	13	2.29
1957	New York	38	—	124	7	9	110	60	45	50	3.63

RAMON MONZANT

Year	Club	G	CG	IP	W	L	H	SO	BB	ER	ERA.
1952	Shelby	31	19	204	16	7	159	164	71	55	2.43
1953	Danville, Va.	37	22	254	23	6	193	231	107	77	2.73
1954	Minneapolis	27	5	161	11	7	148	123	90	79	4.42
1954	New York	6	0	8	0	0	8	5	11	4	4.50
1955	Minneapolis	12	7	85	7	1	69	88	33	34	3.60
1955	New York	27	3	94	4	8	98	47	38	34	4.12
1956	New York	4	1	13	1	0	8	11	7	6	4.15
1956	Minneapolis	3	0	8	0	1	12	5	3	5	5.63
1957	New York	24	0	50	3	2	55	37	16	22	3.96

JOSEPH SHIPLEY

Year	Club	G	CG	IP	W	L	H	SO	BB	ER	ERA.
1953	Big Stone Gap	7	0	24	0	3	28	14	26	26	9.72
1953	Vidalia	15	2	70	1	6	52	54	61	47	6.04
1954	Shelby	7	2	32	2	3	30	15	22	17	4.78
1954	Olean	16	1	41	1	7	53	33	75	56	12.29
1955	Mayfield	27	12	155	13	5	139	174	116	72	4.17
1956	Johnstown	32	11	200	8	19	188	130	131	91	4.10
1957	Minneapolis	18	1	61	4	1	63	31	42	26	3.83
1957	Springfield	17	9	117	5	8	99	86	73	46	3.52

ALLAN WORTHINGTON

Year	Club	G	CG	IP	W	L	H	SO	BB	ER	ERA.
1952	Nashville	41	13	221	13	13	194	152	140	87	3.54
1953	Minneapolis	17	9	118	9	5	114	74	50	38	2.90
1953	New York	20	5	102	4	8	103	52	54	39	3.44
1954	Minneapolis	24	10	152	11	7	146	93	58	73	4.32
1954	New York	10	0	18	0	2	21	8	15	7	3.50
1955	Minneapolis	38	18	239	19	10	226	150	98	95	3.58
1956	New York	28	4	166	7	14	158	95	80	73	3.96
1957	New York	55	1	158	8	11	140	90	56	74	4.22

DOMINICK ZANNI

Year	Club	G	CG	IP	W	L	H	SO	BB	ER	ERA.
1951	Jenkins, Ky.	16	6	81	1	11	120	57	88	68	7.56
1952	Pauls Valley	36	20	244	20	8	195	213	132	84	3.10
1953	Muskogee	55	10	236	15	15	198	200	170	96	3.66
1954	Sioux City	30	9	167	8	9	121	123	94	62	3.34
1955	Sioux City	30	17	211	15	12	188	128	78	77	3.28
1956	Dallas	6			1	3					
1956	Johnstown	38	5	145	10	4	127	130	66	47	2.92
1957	Louisville	34	8	194	6	15	201	167	101	95	4.41

CATCHERS

RAY KATT

Year	Club	G	AB	H	2B	3B	HR	RBI	PCT.
1947	Jacksonville	32	114	32	6	3	0	24	.281
1948	St. Cloud	97	335	107	23	6	6	57	.319
1949	Sioux City	82	241	59	9	0	9	42	.245
1949	Trenton	33	116	43	6	2	1	23	.371
1950	Sioux City	134	465	130	25	1	10	80	.280
1951	Minneapolis	117	354	109	27	0	11	57	.308
1952	Minneapolis	123	448	136	24	1	15	68	.304
1952	New York	9	27	6	0	0	0	1	.222
1953	Buffalo	17	53	13	3	0	2	3	.245
1953	Minneapolis	114	448	146	31	3	28	98	.326
1953	New York	8	29	5	1	0	0	1	.172
1954	New York	86	200	51	7	1	9	33	.255
1955	New York	124	326	70	7	2	7	28	.215
1956	N. Y.-St. L.	84	259	64	8	0	13	34	.247
1957	New York	72	165	38	1	2	1	17	.230

ROGER McCARDELL

Year	Club	G	AB	H	2B	3B	HR	RBI	PCT.
1950	Harlan	71	261	88	17	0	10	59	.337
1951	Quebec	99	340	73	11	0	5	49	.215
1952	Quebec	104	337	96	17	1	2	60	.285
1955	Jacksonville	55	182	44	10	0	3	18	.242
1955	Evansville	38	108	25	2	1	2	15	.231
1956	Jacksonville	55	128	37	7	1	4	24	.289
1957	Sioux City	114	385	117	21	0	22	95	.304

BOB SCHMIDT

Year	Club	G	AB	H	2B	3B	HR	RBI	PCT.
1951	Lenoir	50	169	48	11	6	4	37	.284
1952	Oshkosh	119	424	105	17	0	11	73	.248
1955	Danville	130	479	127	29	1	14	69	.265
1956	Dallas	111	337	95	17	0	13	59	.282
1957	Minneapolis	120	414	108	14	4	17	61	.261

NICK TESTA

Year	Club	G	AB	H	2B	3B	HR	RBI	PCT.
1947	Seaford	110	391	114	14	4	1	73	.292
1948	Trenton	86	244	45	3	0	0	12	.184
1949	Erie	96	341	91	9	3	1	61	.267
1950	Erie	60	171	42	12	0	0	23	.246
1951	Idaho Falls	65	212	56	12	2	0	38	.264
1952	Jacksonville	125	411	110	18	3	0	40	.268
1954	Sioux City	41	130	28	2	0	0	4	.215
1955	Johnstown	74	231	71	10	3	2	35	.307
1955	Dallas	16	33	1	1	0	0	2	.030
1956	Johnstown	118	324	83	14	2	0	43	.256
1957	Dallas	129	396	93	7	5	2	50	.235

VALMY THOMAS

Year	Club	G	AB	H	2B	3B	HR	RBI	PCT.
1955	St. Jean	106	357	102	18	2	9	63	.286
1956	Johnstown	19	72	20	4	1	1	11	.278
1956	Albuquerque	82	268	98	14	1	10	53	.366
1957	New York	88	241	60	10	3	6	31	.249

INFIELDERS

EDWARD BRESSOUD

Year	Club	G	AB	H	2B	3B	HR	RBI	PCT.
1950	Springfield	70	250	60	14	3	2	34	.240
1951	Sioux City	149	508	117	20	2	5	53	.230
1952	Sioux City	155	526	134	25	4	5	68	.255
1955	Minneapolis	145	542	136	35	3	19	74	.251
1956	Minneapolis	86	294	79	18	0	3	51	.269
1956	New York	49	163	37	4	2	0	9	.227
1957	Minneapolis	81	318	91	26	4	4	35	.286
1957	New York	49	127	34	2	2	5	10	.268

FOSTER CASTLEMAN

Year	Club	G	AB	H	2B	3B	HR	RBI	PCT.
1949	Fort Smith	131	478	134	20	5	2	75	.280
1950	Knoxville	149	559	153	29	4	6	75	.274
1953	Minneapolis	20	68	25	5	0	0	13	.368
1954	Minneapolis	85	322	102	25	1	11	59	.317
1954	New York	13	12	3	0	0	0	1	.250
1955	New York	15	28	6	1	0	2	4	.214
1955	Minneapolis	43	96	29	6	1	4	10	.302
1956	New York	124	385	87	16	3	14	45	.226
1957	New York	18	37	6	2	0	1	1	.162
1957	Minneapolis	48	151	37	5	0	2	13	.245

ORLANDO CEPEDA

(ON PHOENIX ROSTER)

Year	Club	G	AB	H	2B	3B	HR	RBI	PCT.
1955	Kokomo	92	374	147	23	2	21	91	.393
1956	St. Cloud	125	499	177	33	9	26	112	.355
1957	Minneapolis	151	563	174	31	3	25	108	.309

Born 9-17-37 at Argentina, Puerto Rico. Weight 200. Height 6'.

JAMES DAVENPORT

(ON PHOENIX ROSTER)

Year	Club	G	AB	H	2B	3B	HR	RBI	PCT.
1955	El Dorado	105	405	147	29	6	17	76	.363
1956	Dallas	153	573	152	25	5	13	73	.271
1957	Minneapolis	148	529	154	28	3	10	53	.291

Born 8-17-33 at Siluria, Ala. Weight 175. Height 5'11".

GAIL HARRIS

Year	Club	G	AB	H	2B	3B	HR	RBI	PCT.
1950	Lenoir	97	395	124	21	4	16	91	.314
1951	Knoxville	48	178	61	10	3	6	38	.343
1951	Lenoir	66	264	89	20	6	8	60	.337
1952	Sioux City	141	500	128	20	3	23	92	.256
1953	Nashville	150	565	159	23	1	25	86	.281
1954	Minneapolis	150	550	170	24	4	34	113	.309
1955	Minneapolis	44	175	53	4	2	17	43	.303
1955	New York	79	263	61	9	0	12	36	.232
1956	New York	12	38	5	0	1	1	1	.132
1956	Minneapolis	133	477	129	29	4	24	82	.270
1957	New York	90	225	54	7	3	9	31	.240

RAY JABLONSKI

Year	Club	G	AB	H	2B	3B	HR	RBI	PCT.
1947	Milford	67	261	85	15	1	10	49	.326
1948	Milford	123	486	172	24	2	26	131	.354
1949	Columbus	140	524	144	17	5	7	55	.275
1950	Columbus	29	87	19	6	1	2	8	.218
1950	Lynchburg	121	461	133	33	3	17	83	.289
1951	Winston-Salem	139	551	200	45	3	28	127	.363
1952	Rochester	152	592	177	27	10	18	103	.299
1953	St. Louis	157	604	162	23	5	21	112	.268
1954	St. Louis	152	611	181	33	3	12	104	.296
1955	Cincinnati	74	221	53	9	0	9	28	.240
1955	San Diego	62	213	60	8	0	13	40	.282
1956	Cincinnati	130	407	104	25	1	15	66	.256
1957	New York	107	305	88	15	1	9	57	.289

CARROLL LOCKMAN

Year	Club	G	AB	H	2B	3B	HR	RBI	PCT.
1943	Jersey City	78	271	72	9	4	0	18	.266
1944	Jersey City	141	476	125	18	6	4	56	.263
1945	Jersey City	48	126	40	9	5	4	28	.317
1945	New York	32	129	44	9	0	3	18	.341
1947	New York	2	2	1	0	0	0	1	.500
1948	New York	146	584	167	24	10	18	59	.286
1949	New York	151	617	186	32	7	11	65	.301
1950	New York	129	532	157	28	5	6	52	.295
1951	New York	153	614	173	27	7	12	73	.282
1952	New York	154	606	176	17	4	13	58	.290
1953	New York	150	607	179	22	4	9	61	.295
1954	New York	148	570	143	17	3	16	60	.251
1955	New York	147	576	157	19	0	15	49	.273
1956	N. Y. - St. L.	118	362	94	7	3	1	20	.260
1957	New York	133	456	113	9	4	7	30	.248

DAN O'CONNELL

Year	Club	G	AB	H	2B	3B	HR	RBI	PCT.
1946	Bloomington	121	446	146	27	12	4	78	.327
1947	Three Rivers	133	485	151	30	7	0	49	.311
1948	Greenville	146	579	169	34	9	10	62	.292
1949	St. Paul	138	493	155	29	1	17	102	.314
1950	Indianapolis	84	322	113	20	4	8	50	.351
1950	Pittsburgh	79	315	92	16	1	8	32	.292
1953	Pittsburgh	149	588	173	26	8	7	55	.294
1954	Milwaukee	146	541	151	28	4	2	37	.279
1955	Milwaukee	124	453	102	15	4	6	40	.225
1956	Milwaukee	139	498	119	17	9	2	42	.239
1957	Milw'kee-N. Y.	143	547	140	4	8	7	36	.256

ANDRE RODGERS

Year	Club	G	AB	H	2B	3B	HR	RBI	PCT.
1954	Olean	125	440	126	23	4	9	85	.286
1955	St. Cloud	123	452	175	28	7	28	111	.387
1956	Dallas	146	479	128	23	1	21	83	.267
1957	New York	32	86	21	2	1	3	9	.244
1957	Minneapolis	52	150	33	9	1	2	15	.220

DARYL SPENCER

Year	Club	G	AB	H	2B	3B	HR	RBI	PCT.
1949	Pauls Valley	140	528	151	29	4	23	112	.286
1950	Sioux City	156	576	154	36	3	23	99	.281
1951	Nashville	120	398	100	28	3	8	61	.251
1952	Minneapolis	142	523	154	35	2	27	80	.294
1952	New York	7	17	5	0	1	0	3	.294
1953	New York	118	408	85	18	5	20	56	.208
1956	New York	146	489	108	13	2	14	42	.221
1957	New York	148	534	133	31	2	11	50	.249

OSSIE VIRGIL

Year	Club	G	AB	H	2B	3B	HR	RBI	PCT.
1953	St. Cloud	118	433	112	13	4	7	60	.259
1954	Danville	137	530	154	34	7	9	68	.291
1955	Dallas	159	614	181	31	5	17	79	.295
1956	Minneapolis	152	525	139	28	4	10	67	.265
1956	New York	3	12	5	1	1	0	2	.417
1957	New York	96	226	53	0	2	4	24	.235

OUTFIELDERS

FELIPE ALOU

(ON PHOENIX ROSTER)

Year	Club	G	AB	H	2B	3B	HR	RBI	PCT.
1956	Lake Charles	5	9	2	0	0	0	1	.222
1956	Cocoa	119	445	169	15	6	21	99	.380
1957	Minneapolis	24	57	12	2	0	0	3	.211
1957	Springfield	106	363	110	11	3	12	64	.303

Born 5-12-35. Ciudad Trujillo, Dom. Rep. Weight 195. Height 6'.

WILLIAM KIRKLAND

Year	Club	G	AB	H	2B	3B	HR	RBI	PCT.
1953	Marysville	125	513	167	20	24	35	164	.326
1954	Danville	17	48	13	0	2	2	7	.271
1954	St. Cloud	114	406	146	11	11	27	105	.360
1955	Sioux City	141	502	158	25	6	40	116	.315
1956	Minneapolis	154	574	168	35	12	37	120	.293

WILLIE MAYS

Year	Club	G	AB	H	2B	3B	HR	RBI	PCT.
1950	Trenton	81	306	108	20	8	4	55	.353
1951	Minneapolis	35	149	71	18	3	8	30	.477
1951	New York	121	464	127	22	5	20	68	.274
1952	New York	34	127	30	2	4	4	23	.236
1954	New York	151	565	195	33	13	41	110	.345
1955	New York	152	580	185	18	13	51	127	.319
1956	New York	152	578	171	27	8	36	84	.296
1957	New York	151	585	195	26	20	35	97	.333

DON MUELLER

Year	Club	G	AB	H	2B	3B	HR	RBI	PCT.
1944	Jersey City	3	7	1	0	0	0	3	.143
1945	Jersey City	8	8	2	0	0	0	1	.250
1946	Jersey City	28	78	28	7	0	1	10	.359
1947	Jacksonville	122	469	163	34	9	4	85	.348
1948	New York	36	81	29	4	1	1	9	.358
1948	Jersey City	99	400	131	17	4	10	52	.328
1949	Minneapolis	28	119	37	7	2	2	72	.311
1949	New York	51	56	13	4	0	0	5	.232
1950	New York	132	525	153	15	6	7	84	.291
1951	New York	122	469	130	10	7	16	69	.275
1952	New York	126	456	128	14	7	12	49	.281
1953	New York	131	480	160	12	2	6	60	.333
1954	New York	153	619	212	35	8	4	71	.342
1955	New York	147	605	185	21	4	8	83	.306
1956	New York	138	453	122	12	1	5	41	.269
1957	New York	135	450	116	7	1	6	37	.258

DUSTY RHODES

Year	Club	G	AB	H	2B	3B	HR	RBI	PCT.
1947	Hopkinsville	125	494	161	19	9	12	92	.326
1948	Springfield	131	500	152	21	10	13	107	.304
1949	Springfield	119	451	131	20	9	10	82	.290
1950	Des Moines	45	161	42	11	3	3	29	.261
1950	Rock Hill	78	297	90	13	9	14	54	.303
1951	Rock Hill	135	529	182	38	10	31	140	.344
1952	Nashville	89	345	121	29	4	18	68	.354
1952	New York	67	176	44	8	1	10	36	.250
1953	New York	76	163	38	7	0	11	30	.233
1954	New York	82	164	56	7	3	15	50	.341
1955	New York	94	187	57	5	2	6	32	.305
1956	New York	111	244	53	10	3	8	33	.217
1957	New York	92	190	39	5	1	4	19	.205

HANK SAUER

Year	Club	G	AB	H	2B	3B	HR	RBI	PCT.
1937	Butler	64	235	63	7	3	3	38	.268
1938	Butler	100	385	135	29	8	12	74	.351
1939	Akron	127	472	142	31	8	13	92	.301
1940	Birmingham	118	384	112	17	10	9	79	.292
1941	Birmingham	154	585	193	20	14	19	114	.330
1941	Cincinnati	9	33	10	4	0	0	5	.303
1942	Cincinnati	7	20	5	0	0	2	4	.250
1942	Syracuse	82	291	62	9	2	11	44	.213
1943	Syracuse	154	571	157	32	9	12	75	.275
1945	Cincinnati	31	116	34	1	0	5	20	.293
1946	Syracuse	140	517	146	29	2	21	90	.282
1947	Syracuse	146	542	182	28	1	50	141	.336
1948	Cincinnati	145	530	138	22	1	35	97	.260
1949	Cincinnati	42	152	36	6	0	4	16	.237
1949	Chicago	96	357	104	17	1	27	83	.291
1950	Chicago	145	540	148	32	2	32	103	.274
1951	Chicago	141	525	138	19	4	30	89	.263
1952	Chicago	151	567	153	31	3	37	121	.274
1953	Chicago	108	395	104	16	5	19	60	.263
1954	Chicago	142	520	150	18	1	41	103	.288
1955	Chicago	79	261	55	8	1	12	28	.211
1956	St. Louis	75	151	45	4	0	5	24	.298
1957	New York	127	378	98	14	1	26	76	.259

DON TAUSSIG

Year	Club	G	AB	H	2B	3B	HR	RBI	PCT.
1950	Independence	54	215	42	8	4	3	33	.195
1951	Sunbury	136	457	112	25	3	12	20	.246
1952	Jacksonville	151	548	144	31	6	10	82	.263
1955	Dallas	46	124	26	9	1	3	11	.210
1955	Sioux City	93	331	98	19	2	10	51	.296
1956	Dallas	148	502	126	28	5	15	91	.251
1957	Dallas	152	547	156	26	3	23	90	.285

BOB THOMSON

Year	Club	G	AB	H	2B	3B	HR	RBI	PCT.
1942	Bristol	5	12	3	0	1	0	0	.250
1942	Rocky Mount.	29	87	21	4	0	3	18	.241
1946	Jersey City	151	533	149	12	7	26	92	.280
1946	New York	18	54	17	4	1	2	9	.315
1947	New York	138	545	154	26	5	29	85	.283
1948	New York	138	471	117	20	2	16	63	.248
1949	New York	156	641	198	35	9	27	109	.309
1950	New York	149	563	142	22	7	25	85	.252
1951	New York	148	518	152	27	8	32	101	.293
1952	New York	153	608	164	29	14	24	108	.270
1953	New York	154	608	175	22	6	26	106	.288
1954	Milwaukee	43	99	23	3	0	2	15	.232
1955	Milwaukee	101	343	88	12	3	12	56	.257
1956	Milwaukee	142	451	106	10	4	20	74	.235
1957	Milw'kee-N. Y.	122	363	87	12	7	12	61	.240



The Giants Introduce . . .

PITCHERS

TOM BOWERS . . . Voted the "Pitcher-of-the-Year" in the Texas League in 1957, and tabbed generally as an outstanding prospect for major league recognition. A graduate of S. M. U. in his native Dallas, Bowers has been pitching professionally for only two and a half seasons (all at Dallas) but however brief, his career has been one of expanding success. He won forty-three games for Dallas during that time, and last year got home with twenty victories as against eight defeats. A righthander with a well rounded equipment he will command close attention at Phoenix.

ERNIE BROGLIO . . . A native Northern Californian (lives now in El Cerrito) the 22-year-old righthander has been in the Giant organization since the Spring of 1956 upon purchase from Oakland. Attended the Giants' training camp that Spring, but his extreme youth and inexperience dictated more minor league training. Pitched at Johnstown in the Eastern League in 1956, and last year at Dallas, where he developed rapidly, he compiled a 17 and 6 record for the pennant winning Dallas Club, and was one of the league's Earned Run leaders with a mark of 2.55. A power pitcher, he has compiled notable strikeout records through his minor league career, which began at Oakland in 1953.

JOSEPH SHIPLEY . . . A "major league arm" is the tag attached to this 22-year-old righthander by the Giant talent scouts, though prior to last season his career was limited to the lower minors. Last year he won nine and lost nine in a season divided between Minneapolis and Springfield in the Eastern League. A protege of Scout Dale Alexander, he began to command attention during

The Giants Introduce . . .

the 1956 season at Johnstown, where his powerful throwing equipment became hard to hit. At Springfield he allowed only 99 hits in 117 innings, and all indications are that improving control will hasten his progress.

DOM ZANNI . . . A native New Yorker, Zanni has been in the Giants' organization since he was signed as an 18-year-old high school prospect in 1951. For two seasons after that he pitched in the lower minors, but came to the Giants' attention with a fine season at Sioux City in 1955. Since then he has operated in the top minors—last year at Louisville in the American Association. A power throwing pitcher, he has been something of a strikeout specialist through all his career.

CATCHERS

ROGER McCARDELL . . . An emphatic minor league batting record recommends this 25-year-old catching huskie. At Sioux City in the Western League last year, he compiled a .304 batting mark, and included 22 home runs in his base hit production, while sponsoring 95 R. B. I.'s. It was his best year to-date, and the indicated improvement along with his obvious batting power won major league recognition. Originally a Milwaukee Brave farm system product, he was drafted into the Giants' organization after the 1956 season. A native Marylander, McCardell is a big fellow, packing 200 pounds into his six-foot frame.

BOB SCHMIDT . . . Tabbed as one of the brighter prospects in the Giants' organization since his release from the service after the 1954 season, the 24-year-old native of Overland, Mo., is making his third bid for a regular place on the Giant catching staff this Spring. In both previous instances it was deemed advisable to give him the benefit of further everyday catching experience. The record indicates this policy is about to pay off, because each of his recent seasons has been better than the one before. In 1956 he was the Texas League's outstanding catcher and last year he stood out at Minneapolis. A sound receiver and a thrower, he appears to have all the tools, including a powerized bat, for he authored seventeen homers at Minneapolis last year while compiling a .261 batting average.

The Giants Introduce . . .

NICK TESTA . . . another native New Yorker who has been in the Giant organization since his high school days. Most of his career, since 1947 has been limited to the lower minors, but his superlative catching skills made him an invaluable member of last year's pennant winning team at Dallas. His "know-how" and direction is given credit for the development of several of that team's pitching prospects, among them Bowers and Broglio, now with the Giants. With Dallas he also was a timely hitter, driving in 50 runs with a .235 batting average. As quite the most successful season of his career it won him a deserved major league opportunity.

INFIELDERS

ORLANDO CEPEDA . . . The ability to swing one of the heaviest bats in the American Association last summer explains the training camp presence of this 20-year-old first base hopeful from Puerto Rico. His slugging exploits at Minneapolis won him the invitation to Phoenix, and it is the hope that his big bat will win a major league place for him at first try. His .309 batting average included 25 home runs, and he drove 108 tallies across the plate. Scouts concede his relative inexperience but insist he is a natural power hitter. He has been playing professionally for only three seasons, but a .393 average at Kokomo in 1955 and a .355 mark at St. Cloud in 1956 moved him up the ladder fast.

JAMES DAVENPORT . . . Three years of minor league baseball represents all of this third basing youngster's baseball background, but they have been three outstanding seasons, each better than the one before, and it is the impression that a major league future isn't too far away. Still an official member of the Phoenix team of the Pacific Coast League, but his spectacularly successful season at Minneapolis last year has awarded him a major league chance. Only 23 he is a native of Siluria, Ala., and has been playing only since 1955 when he broke in at El Dorado. He moved up to Dallas in 1956, and a fine season there took him to Minneapolis for 1957, where he was the American Association's All-Star third baseman, while hitting .291.

The Giants Introduce . . .

ANDRE RODGERS . . . A distinctive major league prospect in that he is a native of Nassau in the Bahamas, the first of that nationality to play professional baseball. Actually, his rise in the sport has been phenomenal. A cricket player in his school days he didn't play his first baseball game until he was seventeen years old. Only 23-years-old now, he has four years of professional experience, and that includes a season's start, as the Opening Day shortstop, with the Giants last year. A painful leg injury impeded his progress and he finished the season at Minneapolis. All his previous minor league experience at Olean, St. Cloud and Dallas, revealed a tremendous playing potential, and it is the impression that these natural skills will bring him to the front rapidly.

OUTFIELDERS

WILLIE KIRKLAND . . . Few young prospects have come to major league attention with more authentic hitting credentials than this 23-year-old Detroit, who has just been released from the Army. In four seasons of minor league play he has fashioned 141 home runs, and has compiled noteworthy run production figures. Played at Marysville, Ky., St. Cloud, Minn., Sioux City and Minneapolis on his way to the majors. At Minneapolis in 1956 he hit 37 home runs, and drove home 120 tallies. Nor is his bat his only recommendation—he is fast, an exceptional thrower, and a markedly improving outfielder. Tuned up for his Phoenix try with a season of winter ball in the Dominican Republic.

DON TAUSSIG . . . A farm system development, he won his major league chance with an exceptional season at Dallas in the Texas League last year. Twenty-five years old now, he has been playing professionally since 1951, but the past year at Dallas was much the best. He combined a .285 batting average with a brilliant outfielding performance in centerfield. His hit production included 23 homers and he drove home ninety tallies. He is a native New Yorker.

The San Francisco Giants

LIFETIME MAJOR LEAGUE BATTING AVERAGES

	PCT.	AB	R	H	2B	3B	HR	RBI	G	YRS.
Bressoud	.245	290	26	71	6	4	5	19	98	2
Castleman	.215	462	43	102	19	3	17	51	170	4
Harris	.226	526	57	120	16	4	22	68	181	3
Jablonski	.274	2148	—	588	105	10	66	367	620	5
Katt	.234	1006	—	234	24	5	30	104	383	6
Lockman	.279	5526	—	1546	202	47	109	528	1431	11
Mays	.311	2899	531	903	128	63	187	509	762	6
Mueller	.293	4194	492	1248	134	37	65	504	1171	10
O'Connell	.264	2942	—	777	106	34	32	242	780	6
Rhodes	.251	1124	145	282	42	10	54	200	522	6
Rodgers	.244	86	8	21	2	1	3	9	32	1
Sauer	.268	4545	681	1218	192	19	275	829	1298	14
Spencer	.228	1448	166	331	62	10	45	151	419	4
Thomas	.249	241	30	60	10	3	6	31	88	1
Thomson	.271	5264	—	1423	222	66	227	872	1462	12
Virgil	.235	226	26	53	0	2	4	24	96	1



PITCHERS LIFETIME MAJOR LEAGUE RECORDS

	W	L	G	CG	IP	H	SO	BB	YRS.
Antonelli	84	76	225	71	1298	1217	766	456	8
Barclay	9	9	37	5	183	196	67	48	1
Burnside	2	4	12	2	44	57	20	22	2
Constable	1	1	19	0	32	36	14	14	2
Crone	29	28	123	10	522	519	253	160	4
Giel	4	4	40	0	85	78	51	51	2
Gomez	61	60	177	52	1084	1039	517	418	5
Grissom	40	40	234	4	478	421	268	174	8
Jolly	16	14	159	—	291	239	155	198	5
Margoneri	7	7	36	3	126	132	67	70	2
McCormick	3	2	27	1	82	86	54	42	2
Miller	27	32	136	—	511	510	285	203	5
Monzant	8	10	62	4	166	169	107	77	4
Worthington	19	35	113	10	444	422	245	199	4

GIANTS PITCHING BREAKDOWN VERSUS NATIONAL LEAGUE CLUBS

	BKN	CHI	CIN	MIL	NY	PHIL	PITT	ST.L
Antonelli	5-6	11-7	19-13	12-11	1-3	9-15	18-6	9-15
Barclay	3-2	1-0	0-2	1-1	—	3-2	0-1	1-1
Burnside	0-1	0-0	0-1	0-0	—	1-0	1-1	0-1
Constable	0-0	0-0	0-0	0-0	—	0-0	0-0	1-1
Crone	4-6	9-4	4-3	1-1	4-3	4-1	1-6	2-4
Gomez	10-11	8-4	12-9	8-14	—	9-5	8-9	6-8
Grissom	4-2	4-5	7-3	1-3	—	4-2	1-2	3-3
Jolly	0-4	1-2	3-1	0-0	5-2	3-2	2-2	2-1
Margoneri	0-0	3-1	1-2	0-1	—	1-1	1-1	1-1
McCormick	0-0	1-0	0-0	0-0	—	1-0	0-1	1-1
Miller	2-6	4-7	3-5	10-5	1-1	2-1	3-5	2-2
Monzant	2-3	0-4	1-0	0-0	0-0	3-0	2-1	0-2
Worthington	4-1	3-1	1-4	1-10	—	5-5	4-6	1-8

SAN FRANCISCO GIANTS

1958 SPRING TRAINING

EXHIBITION SCHEDULE

Saturday.....	March	8.....	Cleveland at Tucson
Sunday.....	March	9.....	Cleveland at Phoenix
Monday.....	March	10.....	OPEN
Tuesday.....	March	11.....	Chicago Cubs at Mesa
Wednesday.....	March	12.....	Baltimore at Phoenix
Thursday.....	March	13.....	Chicago Cubs at Phoenix
Friday.....	March	14.....	Cleveland at El Centro
Saturday.....	March	15.....	Cleveland at Los Angeles
Sunday.....	March	16.....	Cleveland at Los Angeles
Monday.....	March	17.....	OPEN
Tuesday.....	March	18.....	Baltimore at Scottsdale
Wednesday.....	March	19.....	Cleveland at Phoenix
Thursday.....	March	20.....	Cleveland at Tucson
Friday.....	March	21.....	Chicago Cubs at Mesa
Saturday.....	March	22.....	Chicago Cubs at Phoenix
Sunday.....	March	23.....	Baltimore at Phoenix
Monday.....	March	24.....	OPEN
Tuesday.....	March	25.....	Chicago Cubs at Phoenix
Wednesday.....	March	26.....	Baltimore at Phoenix
Thursday.....	March	27.....	Baltimore at Scottsdale
Friday.....	March	28.....	Cleveland at Tucson
Saturday.....	March	29.....	Cleveland at Phoenix
Sunday.....	March	30.....	Cleveland at Tucson
Monday.....	March	31.....	Cleveland at Phoenix
Tuesday.....	April	1.....	Baltimore at Scottsdale
Wednesday.....	April	2.....	Baltimore at Phoenix
Thursday.....	April	3.....	Chicago Cubs at Mesa
Friday.....	April	4.....	OPEN

HOMEWARD TRIP

Saturday.....	April	5.....	Cleveland at El Paso
Sunday.....	April	6.....	Cleveland at San Antonio
Monday.....	April	7.....	Cleveland at Austin
Tuesday.....	April	8.....	Cleveland at Corpus Christi
Wednesday.....	April	9.....	Cleveland at Harlingen
Thursday.....	April	10.....	Cleveland at Houston
Friday.....	April	11.....	Cleveland at Tulsa
Saturday.....	April	12.....	Cleveland at Des Moines
Sunday.....	April	13.....	Cleveland at Omaha

Exhibition game total 33 games. With Cleveland 20; Baltimore 7; Chicago Cubs 6. Exhibition game record vs. Cleveland (since 1934), Won 152; Lost 162; six ties.

HOTELS

SPRING TRAINING TRIP

Phoenix, Ariz.	Adams <i>Alpine 3-1131</i>
Los Angeles, Calif.	Biltmore <i>Michigan 1011</i>
El Centro, Calif.	Barbara Worth <i>Elgin 2-2021</i>
El Paso, Texas	Hilton <i>Keystone 2-5661</i>
San Antonio, Texas	Gunter <i>Capital 7-3241</i>
Austin, Texas	Stephen F. Austin <i>Greenwood 6-4361</i>
Corpus Christi, Texas	Robert Driscoll <i>Tulip 2-5331</i>
Harlingen, Texas	Madison <i>Garfield 3-2160</i>
Houston, Texas	Rice <i>Capital 7-2111</i>
Tulsa, Oklahoma	Tulsa Hotel <i>Cherry 2-4301</i>
Des Moines, Iowa	Fort Des Moines <i>Cherry 3-1161</i>
Omaha, Nebraska	Sheraton-Fontenelle <i>Atlantic 6226</i>

NATIONAL LEAGUE SEASON

Chicago, Illinois	Edgewater Beach <i>Long Beach 1-6000</i>
Cincinnati, Ohio	Terrace Plaza <i>Dunbar 4000</i>
Los Angeles, California	Biltmore <i>Michigan 1011</i>
Milwaukee, Wisconsin	Schroeder <i>Broadway 1-7250</i>
Philadelphia, Pennsylvania	Warwick <i>Pennypacker 5-3800</i>
Pittsburgh, Pennsylvania	Webster Hall <i>Mayflower 1-7700</i>
St. Louis, Missouri	Chase <i>Forest 1-2500</i>

SPRING TRAINING TRAVEL ITINERARY

THURSDAY, MARCH 13

Leave Phoenix, Southern Pacific 11:00 P.M.
Pullmans ready for occupancy at 9:00 P.M.

FRIDAY, MARCH 14

Arrive El Centro, Southern Pacific 8:00 A.M.
Leave El Centro, Southern Pacific 9:00 P.M.

SATURDAY, MARCH 15

Arrive Los Angeles, Southern Pacific 7:00 A.M.

SUNDAY, MARCH 16

Return to Phoenix via TWA Airlines. Flight number, and time of departure to be announced in Los Angeles.

FRIDAY, APRIL 4

Leave Phoenix, Southern Pacific 9:00 P.M.

SATURDAY, APRIL 5

Arrive El Paso, Southern Pacific 8:00 A.M.
Leave El Paso, Texas and New Orleans 6:00 P.M.
Diner on train for dinner.

SUNDAY, APRIL 6

Arrive San Antonio, Texas and New Orleans 9:15 A.M.
Leave San Antonio, Missouri Pacific No. 38 8:15 P.M.
Arrive Austin, Missouri Pacific No. 38 10:35 P.M.

TUESDAY, APRIL 8

Leave Austin, Missouri Pacific 1:15 A.M.
Pullmans ready for occupancy at 9:00 P.M.
Arrive Corpus Christi 7:30 A.M.

WEDNESDAY, APRIL 9

Leave Corpus Christi, Missouri Pacific 2:00 A.M.
Pullmans ready for occupancy at 9:00 P.M.
Arrive Harlingen, Missouri Pacific No. 315 6:50 A.M.
Pullman occupancy until 8 A.M.
Leave Harlingen, Missouri Pacific No. 316 9:45 P.M.

THURSDAY, APRIL 10

Arrive Houston, Missouri Pacific No. 316 7:30 A.M.
Leave Houston, Texas and New Orleans 9:00 P.M.

FRIDAY, APRIL 11

Arrive Tulsa, Frisco Lines 10:15 A.M.
Diner on train for breakfast
Leave Tulsa, Frisco Lines 8:00 P.M.

SATURDAY, APRIL 12

Arrive Des Moines, Chicago and Rock Island 8:00 A.M.
Leave Des Moines, Chicago and Rock Island No. 7 8:25 P.M.
Arrive Omaha, Chicago and Rock Island No. 7 11:05 P.M.

SUNDAY, APRIL 13

From Omaha to San Francisco, United Air Lines Charter.
Flight, leaving Omaha 6:00 P. M., arriving San Francisco approximately 10:05 P.M.

SAN FRANCISCO GIANTS '58 SCHEDULE OF HOME GAMES

APRIL

SUNDAY	MONDAY	TUESDAY	WEDNESDAY	THURSDAY	FRIDAY	SATURDAY
		1	2	3	4	5
6	7	8	9	10	11	12
13	14	15 L.A.	16 L.A. IND	17 L.A.	18	19
20	21	22 S.F.L. IND	23 S.F.L. S.F.L.	24 S.F.L.	25 CHI. IND	26 CHI. IND
27 CHI.	28	29 PHO.	30 PHO.			

MAY

SUNDAY	MONDAY	TUESDAY	WEDNESDAY	THURSDAY	FRIDAY	SATURDAY
				1	2	3
4	5 PHO.	6 PHO. IND	7 PHO.	8	9 L.A. IND	10 L.A.
11	12	13	14	15	16	17
18	19	20	21	22	23	24
25	26	27	28	29	30	31

JUNE

SUNDAY	MONDAY	TUESDAY	WEDNESDAY	THURSDAY	FRIDAY	REAR	SATURDAY
1	2	3 Wsh. IND	4 Wsh. IND	5 Wsh.	6 Wsh.	7 CHI. IND	8 CHI.
9 CHI.	10 CHI.	11 PHO. IND	12 PHO.	13 PHO. IND	14 PHO.	15 PHO. IND	16 PHO.
17 PHO.	18	19	20	21	22	23	24
25	26	27	28	29	30		

JULY

SUNDAY	MONDAY	TUESDAY	WEDNESDAY	THURSDAY	FRIDAY	SATURDAY
		1	2	3 CHI.	4 7 CHI.	5
6 S.F.L.	7	8	9	10 CHI. IND	11 CHI.	12
13 PHO. IND	14 Wsh.	15 PHO. IND	16 PHO.	17 PHO.	18 PHO. IND	19
20 PHO.	21	22	23	24	25	26
27	28	29	30	31		

AUGUST

SUNDAY	MONDAY	TUESDAY	WEDNESDAY	THURSDAY	FRIDAY	SATURDAY
					1	2
3	4	5	6	7	8	9
10	11	12 S.F.L. IND	13 S.F.L.	14 S.F.L.	15 S.F.L. IND	16 S.F.L.
17	18	19 CHI.	20 CHI.	21	22 CHI. IND	23 CHI.
24	25 Wsh. IND	26 Wsh.	27 Wsh. IND	28	29 L.A. IND	30 L.A.
31						

SEPTEMBER

SUNDAY	MONDAY	TUESDAY	WEDNESDAY	THURSDAY	FRIDAY	SATURDAY
		1 (AUG. 31) L.A.	2	3	4	5
6	7	8	9	10	11	12
13	14	15	16	17	18	19
20	21	22	23 CHI. IND	24 CHI.	25	26 S.F.L. IND
27	28	29	30			

Day Games

Saturday & Sunday Games

Night Games

Holiday Games

