

Rochester Royals

SEASON 1952-53

MEDIA GUIDE

**ROCHESTER
SPORTS ARENA**

Member National Basketball Association



History of the Royals

REGULAR SEASON

| YEAR | LEAGUE | WON | LOST | PCT. | FINISH |
|---------|----------|-----|------|------|--|
| 1945-46 | N.B.L. | 24 | 10 | .706 | 2nd in Eastern Division—Won Play-offs. CHAMPIONS |
| 1946-47 | N.B.L. | 31 | 13 | .705 | 1st in Eastern Division—Lost Play-off Finals. |
| 1947-48 | N.B.L. | 44 | 16 | .733 | 1st in Eastern Division—Lost Play-off Finals. |
| 1948-49 | B.A.A. | 45 | 15 | .750 | 1st in Western Division—Lost Play-off Finals. |
| 1949-50 | N.P.B.L. | 51 | 17 | .750 | Tied for 1st in Central Division—Lost Play-off for Title to Minneapolis Lakers. Lost in Divisional quarter-finals. |
| 1950-51 | N.B.A. | 41 | 27 | .603 | 2nd in Western Division—Won Play-offs. CHAMPIONS |
| 1951-52 | N.B.A. | 41 | 25 | .621 | 1st in Western Division—Lost Division finals. |

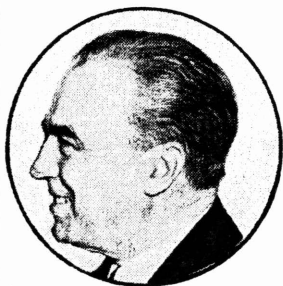
PLAYOFF GAME RECORDS

| YEAR | LEAGUE | W. | L. | PCT. | OPPONENT | RESULT |
|------------------|----------|----|----|------|-------------|-------------------------|
| 1945-46 | N.B.L. | 6 | 1 | .857 | Fort Wayne | Beat Fort Wayne 3-1 |
| | | | | | Sheboygan | Beat Sheboygan 3-0 |
| CHAMPIONS | | | | | | |
| 1946-47 | N.B.L. | 6 | 5 | .545 | Syracuse | Beat Syracuse 3-1 |
| | | | | | Fort Wayne | Beat Fort Wayne 2-1 |
| | | | | | Chicago | Lost to Chicago 1-3 |
| 1947-48 | N.B.L. | 5 | 5 | .500 | Fort Wayne | Beat Fort Wayne 2-1 |
| | | | | | Anderson | Beat Anderson 2-1 |
| | | | | | Minneapolis | Lost to Minneapolis 1-3 |
| 1948-49 | B.A.A. | 2 | 2 | .500 | St. Louis | Beat St. Louis 2-0 |
| | | | | | Minneapolis | Lost to Minneapolis 0-2 |
| 1949-50 | N.P.B.L. | 0 | 2 | .000 | Fort Wayne | Lost to Fort Wayne 0-2 |
| 1950-51 | N.B.A. | 9 | 5 | .643 | Minneapolis | Beat Minneapolis 3-1 |
| | | | | | Fort Wayne | Beat Fort Wayne 2-1 |
| | | | | | New York | Beat New York 4-3 |
| CHAMPIONS | | | | | | |
| 1951-52 | N.B.A. | 3 | 3 | .500 | Fort Wayne | Beat Fort Wayne 2-0 |
| | | | | | Minneapolis | Lost to Minneapolis 1-3 |

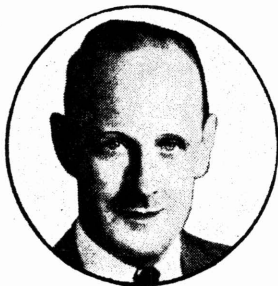
FROM THE SPORTS LIBRARY OF
RETROSEASONS  **com**

www.retroseasons.com/library/

DIRECTORS OF ROCHESTER ROYALS



HARRY B. CROWLEY
Director



JOHN W. JARDINE
Chairman of the Board



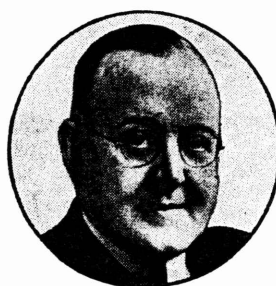
CARL S. HALLAUER
Director



DONALD A. DAILEY
Director



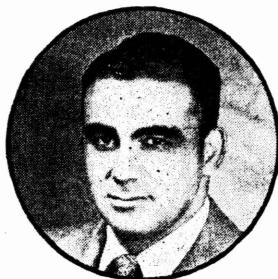
FREDERICK M. TOBIN
Director



A. ELMER RAITHEL
Director



THOMAS L. LEE
Director



ROBERT WEHLE
Director



JAMES WILMOT
Director



LES HARRISON
Coach



JACK HARRISON
Secretary

ROCHESTER ROYALS

Office: 338 Powers Building, Rochester 14, New York
Telephone: Locust 4300

President and General Manager.....Lester Harrison
Secretary.....Jack Harrison
Publicity Director.....Charles W. Coleman, Jr.
Coach.....Lester Harrison
Home Court.....Edgerton Park Sports Arena
Seating Capacity.....5,000
Colors.....Royal Blue

| Name | Age | Height | Weight | Residence | College |
|------------------------|-----|--------|--------|---------------------|--------------------|
| Christensen, Cal. | 25 | 6'5" | 230 | Toledo, Ohio | Toledo |
| Coleman, Jack | 27 | 6'7" | 230 | Burgin, Ky. | Louisville |
| Davies, Robert | 30 | 6'1" | 175 | Harrisburg, Pa. | Seton Hall |
| Hannum, Alex | 26 | 6'7" | 220 | Los Angeles, Calif. | So. California |
| Holzman, William .. | 30 | 5'11" | 175 | New York, N. Y. | C. C. N. Y. |
| Johnson, Arnold | 29 | 6'5" | 230 | Gonvick, Minn. | Bemidji State |
| McMahon, John | .. | 6'1" | 188 | Brooklyn, N. Y. | St. John's (Bkyn.) |
| Risen, Arnold | 27 | 6'9" | 210 | Williamstown, Ky. | Ohio State |
| Spears, Marion | 27 | 6'5" | 205 | Louisville, Ky. | Western Ky. |
| Wanzer, Robert | 27 | 6'0" | 170 | New York, N. Y. | Seton Hall |

Sketches of Royals Players



CALVIN CHRISTIANSEN, Toledo, Ohio. 6'5"
 Forward . . . 230 lbs. . . .
 Toledo University . . .
 Averaged 11.2 points per
 game with field goal per-
 centage of .434 in four
 years collegiate play . . .
 army veteran . . . previous
 experience with Tri City

Blackhawks and Milwaukee Hawks . . . 1st sea-
 son with Royals.

CAL CHRISTENSEN

Born June 6, 1927. Height 6.5. Weight 210.
 Alma Mater—Toledo '50.

| Sea.—Team | G. | Min. | FGA. | FGM. | Pct. | FTA. | FTM. | Pct. | Reb. | Ast. | PF. | Disq. | Pts. | Avg. |
|------------------|----|-------|------|------|------|------|------|------|------|------|-----|-------|------|------|
| 50-51—Tri-Cities | 67 | | 445 | 134 | .301 | 245 | 175 | .714 | 523 | 161 | 266 | 19 | 443 | 6.6 |
| 51-52—Milwaukee | 24 | 374 | 96 | 29 | .302 | 57 | 30 | .526 | 82 | 34 | 47 | 2 | 88 | 3.7 |



JACK COLEMAN, Burgin, Kentucky. 6'7" Guard . . . 230 lbs. . . Graduate of Louisville U. 1949 . . . Captain Louisville U. 1948-49 season . . . scored 461 points for average of 14 points per game . . . led in field goal shooting percentage making 48% of f. g. attempts . . . played with Navy service teams at Great Lakes, Bainbridge and San Diego . . . sea duty in Pacific on board carrier . . . led Kentucky intercollegiate in scoring for 2 seasons . . . entering 4th season of pro ball with Royals . . . last season he average 11.2 points per game . . . field goal average was 41.5.



JACK COLEMAN

Born May 23, 1924. Height 6.7. Weight 230.

Alma Mater—Louisville '49.

| Sea.—Team | G. | Min. | FGA. | FGM. | Pct. | FTA. | FTM. | Pct. | Reb. | Ast. | PF. | Disq. | Pts. | Av. |
|-----------------|----|------|------|------|------|------|------|------|------|------|-----|-------|------|------|
| 49-50—Rochester | 68 | | 663 | 250 | .377 | 121 | 90 | .744 | | 153 | 223 | | 590 | 8.7 |
| 50-51—Rochester | 67 | | 749 | 315 | .421 | 172 | 134 | .779 | 584 | 197 | 193 | 4 | 784 | 11.4 |
| 31-52—Rochester | 66 | 2606 | 742 | 308 | .415 | 169 | 120 | .710 | 692 | 208 | 218 | 7 | 736 | 11.2 |



BOB DAVIES, Harrisburg, Pa. 6'1" Forward . . . 175 lbs. . . . Seton Hall All-American 1942 . . . selected as the most valuable college All-Star player, in game against Oshkosh All Stars at Chicago . . . 1942 Pic Magazine and Collier's Magazine All-American Basketball Team . . . selected as most valuable player in National Basketball League in 1946-

47 season . . . and on National Basketball League 2nd All Star Team 1947-48 season . . . Selected on 1948-49 B.A.A. All-Star Team . . . 1949-50 season chosen on N.B.A. All Star Team . . 1950-51 season 15.2 points per game . . . 1951-52 averaged 16.2 points per game . . . 5th in league scoring . . . 3rd in assists . . . chosen on West Squad for All Star Game . . . Chosen on N.B.A. All Star Team.

ROBERT DAVIES

Born January 15, 1920. Height 6.1. Weight 175.
Alma Mater—Seton Hall '42.

| Sea.—Team | G. | Min. | FGA. | FGM. | Pct. | FTA. | FTM. | Pct. | Reb. | Ast. | PF. | Disq. | Pts. | Avg. |
|-----------------|----|-------|------|-------|------|------|------|-------|-------|-------|-----|-------|------|------|
| 45-46—Roch-N L | 27 | | 86 | | 103 | 70 | .680 | | 85 | | 242 | | 9.0 | |
| 46-47—Roch-N L | 32 | | 166 | | 166 | 130 | .777 | | 90 | | 462 | | 14.4 | |
| 47-48—Roch-N L | 48 | | 176 | | 161 | 121 | .752 | | 111 | | 473 | | 9.9 | |
| 48-49—Rochester | 60 | | 871 | 317 | .363 | 348 | 270 | .776 | | 321 | 197 | | 50.4 | 15.1 |
| 49-50—Rochester | 64 | | 887 | 317 | .357 | 347 | 261 | .752 | | 294 | 187 | | 895 | 14.0 |
| 50-51—Rochester | 63 | | 877 | 326 | .372 | 381 | 303 | .795 | 197 | 287 | 208 | 7 | 955 | 15.2 |
| 51-52—Rochester | 65 | 2394 | 990 | 379 | .383 | 379 | 294 | .776 | 189 | 390 | 269 | 10 | 1052 | 16.2 |



ALEX HANNUM, Los Angeles, Calif. 6'7" . . . Forward-center . . . 220 lbs. . . . All American U. of Southern Calif. . . 1948-49 season with Oshkosh in N.B.L. . . . 1949-50 season with Syracuse Nats in N.B.A. . . . averaged 7.5 points per game 1949-50-51 seasons . . . 1951-52 season with Baltimore and Royals averaged 6.6 points per game with field goal percentage of 36.8.



ALEX HANNUM

Born July 19, 1923. Height 6.7. Weight 225.
Alma Mater—Southern California '48.

| Sea.—Team | G. | Min. | FGA. | FGM. | Pct. | FTA. | FTM. | Pct. | Reb. | Ast. | PF. | Dist. | Pts. | Avg. |
|-----------------|----|------|------|------|------|------|------|------|------|------|-----|-------|------|------|
| 48-49—Osh-N L | 62 | | | 126 | | 191 | 113 | .592 | | | 188 | | 365 | 5.9 |
| 49-50—Syracuse | 64 | | 488 | 177 | .363 | 186 | 128 | .688 | | 129 | 264 | | 482 | 7.5 |
| 50-51—Syracuse | 63 | | 494 | 182 | .368 | 197 | 107 | .543 | 301 | 119 | 271 | 16 | 471 | 7.5 |
| 51-52—Balt-Roch | 66 | 1508 | 462 | 170 | .368 | 138 | 98 | .710 | 336 | 133 | 271 | 16 | 438 | 6.6 |



WILLIAM "RED" HOLZ-
MAN, New York City.
 5'11" Guard . . . 175 lbs.
 . . . CCNY Captain 1942
 . . . 1942-43 All-Madison
 Square Garden Team . . .
 1942-43 All Metropolitan
 Team . . . 1944 Norfolk
 Naval Training Station
 Team . . . voted the most
 outstanding service team
 in the country . . . mem-

ber Rochester Royals National League Cham-
 pions, 1945-46 and 1946-47 seasons . . . selected on
 National All Star Team 1946-47 season and first
 National League All Star Team 1947-48 season
 . . . 1951-52 season averaged 4.1 points per game.

WILLIAM HOLZMAN

Born August 10, 1920. Height 5.10. Weight 175.

Alma Mater—C.C.N.Y. '43.

| Sea.—Team | G. | Min. | FGA. | FGM. | Pct. | FTA. | FTM. | Pct. | Reb. | Ast. | PF. | Disq. | Pts. | Avg. |
|-----------------|----|-------|------|-------|------|------|------|-------|-------|-------|-----|-------|------|------|
| 45-46—Roch-N L | 31 | | 144 | | 115 | 77 | .669 | | 54 | | 54 | | 365 | 10.7 |
| 46-47—Roch-N L | 43 | | 227 | | 139 | 74 | .532 | | 98 | | 98 | | 528 | 12.0 |
| 47-48—Roch-N L | 60 | | 246 | | 182 | 117 | .643 | | 38 | | 38 | | 609 | 10.2 |
| 48-49—Rochester | 60 | | 691 | 225 | .326 | 157 | 96 | .611 | | 149 | 93 | | 346 | 9.1 |
| 49-50—Rochester | 68 | | 625 | 206 | .330 | 210 | 144 | .686 | | 200 | 97 | | 556 | 8.2 |
| 50-51—Rochester | 68 | | 561 | 183 | .326 | 179 | 130 | .726 | 152 | 147 | 94 | 0 | 496 | 7.3 |
| 51-52—Rochester | 65 | 1063 | 372 | 104 | .280 | 85 | 61 | .718 | 106 | 115 | 95 | 1 | 269 | 4.1 |



ARNE JOHNSON, Gonsvick, Minn. 6'5" Forward . . . All-American from Bemidji State Teachers College 1942-43 . . . 1943 was selected on the All-Tournament Team at Denver, in the AAU Amateur Tournament . . . member Rochester Royals National League Champions 1946-47 season . . . Entering 7th season with Royals . . . last season averaged 10. points per game with field goal percentage of 43.3.

ARNITZ JOHNSON

Born May 17, 1920. Height 6.5. Weight 240.

Alma Mater—Bemidji State '42.

| Sea.—Team | G. | Min. | FGA. | FGM. | Pct. | FTA. | FTM. | Pct. | Reb. | Ast. | PF. | Disq. | Pts. | Avg. |
|-----------------|----|-------|------|-------|------|------|------|-------|-------|-------|-----|-------|------|------|
| 47-48—Roch-N L | 57 | | 101 | | 148 | 97 | .655 | | 153 | | 299 | | 5.2 | |
| 48-49—Rochester | 60 | | 375 | 156 | .416 | 284 | 199 | .701 | | 80 | 247 | | 511 | 8.5 |
| 49-50—Rochester | 68 | | 376 | 149 | .396 | 294 | 200 | .680 | | 141 | 260 | | 498 | 7.3 |
| 50-51—Rochester | 68 | | 403 | 185 | .459 | 371 | 269 | .725 | 449 | 175 | 290 | 11 | 639 | 9.4 |
| 51-52—Rochester | 66 | 2158 | 411 | 178 | .433 | 387 | 301 | .775 | 404 | 182 | 259 | 9 | 637 | 10.0 |



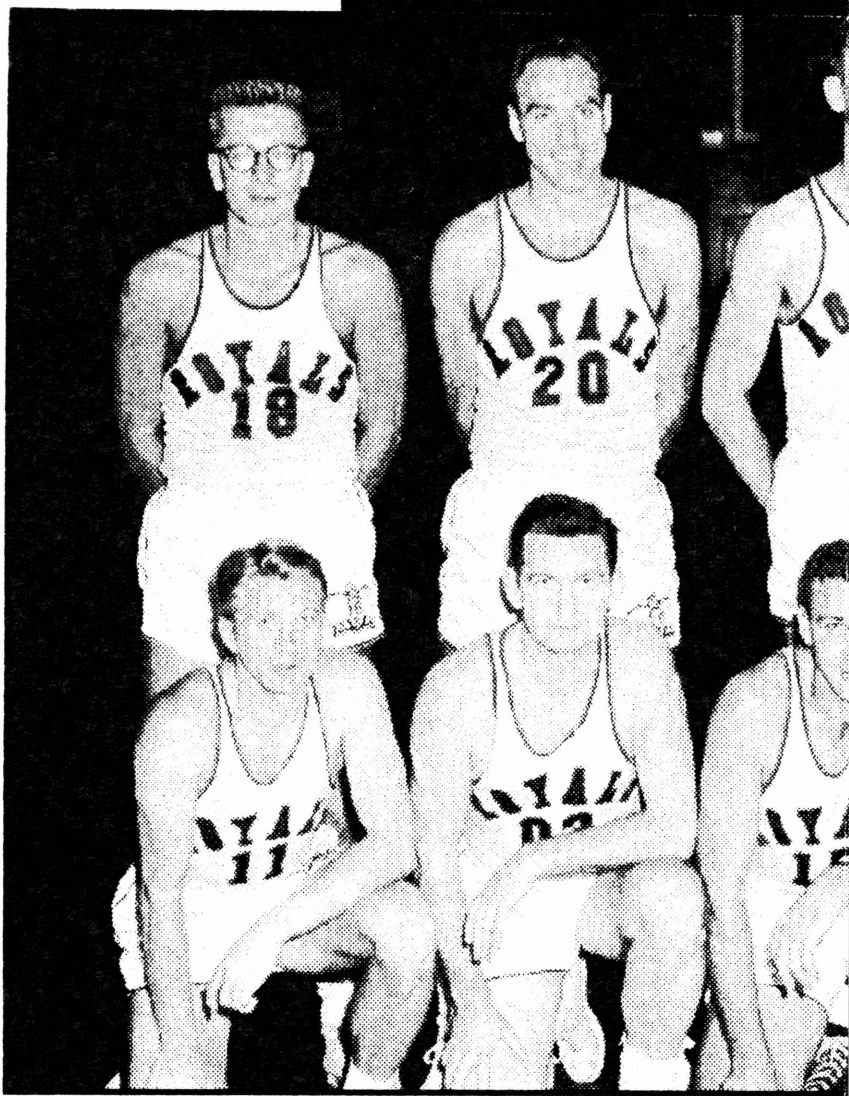
J O H N J. McMahon,
Brooklyn, N. Y. 6'1"
Guard . . . 188 lbs. . . .
St. Johns U. . . . Captain
1951-52 season . . . scored
417 points . . . in start-
ing lineup 91 games . . .
St. Johns winning 76 . . .
Participated in 3 National
Invitation Tournaments . . .
2 NCAA Tournaments and

Olympic trials . . . Navy veteran . . . played
service basketball at Annapolis.

JACK McMAHON

Born December 3, 1928. Height 6.1. Weight 185.
Alma Mater—St. John's (NY) '52.

1952-53



Front row — from left to right, Bob Davies, Jack Coleman, William Holzman. Back row — from left to right, Arnitz Johnson, Jack Coleman, Arnitz Johnson.

SEASON



ck McMahon, Marion Spears, Bobby Wanzer,
t, Cal Christensen, Alex Hannum, Arnie Risen,



ARNOLD RISEN, Williamstown, Ky. 6'9" Center . . . 210 lbs. . . . All-American from Ohio State University . . . professional basketball with Indianapolis in the National Basketball League . . . joined Rochester Royals mid-season of 1947-48. Chosen on 2nd All-Star B.A.A. Team 1948-49 season . . . 1951-52 season 9th in league scoring with 15.6 points per game . . . field goal percentage 39.4 . . . 4th in league in rebounds with 841 . . . chosen on the West Squad for All Star Game.



ARNOLD RISEN

Born October 9, 1924. Height 6.9. Weight 200.

Alma Mater—Ohio State.

| Sea.—Team | G. | Min. | FGA. | FGM. | Pct. | FTA. | FTM. | Pct. | Reb. | Ast. | PF. | Disq. | Pts. | Avg. |
|-----------------|----|-------|------|-------|------|------|------|-------|-------|------|-------|-------|------|------|
| 45-46—Ind-N L | 18 | | 77 | | 110 | 65 | .591 | | | 75 | | 219 | 12.2 | |
| 46-47—Ind-N L | 41 | | 204 | | 276 | 171 | .630 | | | 150 | | 582 | 13.2 | |
| 47-48—Roch-N L | 59 | | 275 | | 371 | 237 | .639 | | | 198 | | 787 | 13.3 | |
| 48-49—Rochester | 60 | | 816 | 345 | .420 | 462 | 305 | .660 | | 100 | 216 | | 395 | 16.6 |
| 49-50—Rochester | 62 | | 598 | 206 | .344 | 321 | 213 | .664 | | 92 | 228 | | 625 | 10.1 |
| 50-51—Rochester | 66 | | 940 | 377 | .401 | 440 | 323 | .689 | 795 | 158 | 278 | 9 | 1077 | 16.3 |
| 51-52—Rochester | 66 | 2396 | 926 | 365 | .394 | 431 | 302 | .701 | 841 | 150 | 258 | 3 | 1032 | 15.6 |



MARION O. SPEARS,
 Louisville, Ky. 6'5" . . .
 205 lbs. . . . Western
 Kentucky U. . . . Captain
 1946-47 . . . 1947-48 sea-
 sons . . . joined Chicago
 Stags 1948-49 season . . .
 averaged 10. points per
 game . . . 1949-50 season
 averaged 10.5 points per
 game with field goal per-
 centage of .357 . . . last season averaged 8.6
 points per game . . . field goal percentage 39.5.



MARION (ODIE) SPEARS

Born June 26, 1925. Height 6.5. Weight 205.
 Alma Mater—Western Kentucky '48.

| Sea.—Team | G. | Min. | FGA. | FGM. | Pct. | FTA. | FTM. | Pct. | Reb. | Ast. | PF. | Disq. | Pts. | Avg. |
|-----------------|-----|------|------|------|------|------|------|------|------|------|-----|-------|------|------|
| 48-49—Chicago | 57 | | 631 | 200 | .317 | 197 | 131 | .665 | | 97 | 200 | | 531 | 9.3 |
| 49-50—Chicago | 57 | | 775 | 227 | .357 | 230 | 158 | .687 | | 159 | 250 | | 712 | 12.5 |
| 51-52—Rochester | .66 | 1673 | 570 | 225 | .395 | 152 | 116 | .763 | 303 | 103 | 225 | 8 | 506 | 8.6 |



BOB WANZER, New York City. 6' Forward... 172 lbs. . . . Seton Hall and Colgate University... served as Marine Corporal in Southwest Pacific before returning to Seton Hall . . . Member of Rochester Royals 1947-48 season to date. 1950-51

season averaged 10.8 points per game . . . 2nd in league on free throw accuracy, hitting 85% of tries . . . 1951-52 season averaged 15.7 points per game with field goal percentage of 42.5 . . . Led League in free throws with 90.4% . . . Chosen on West Squad All Star Game . . . Chosen on 2nd N.B.A. All Star Team.

ROBERT WANZER

Height 6.0. Weight 172. Alma Mater—Seton Hall '48.

| Sea.—Team | G. | Min. | FGA. | FGM. | Pct. | FTA. | FTM. | Pct. | Reb. | Ass. | P.F. | Disq. | Pts. | Avg. |
|-----------------|----|-------|-------|------|-------|------|------|------|-------|-------|------|-------|------|------|
| 47-48—Roch-N L | 39 | | | 55 | | 68 | 56 | .824 | | | 38 | | 160 | 4.3 |
| 48-49—Rochester | 60 | | 533 | 202 | .379 | 254 | 209 | .823 | | 186 | 132 | | 613 | 10.2 |
| 49-50—Rochester | 67 | | 614 | 254 | .414 | 351 | 283 | .806 | | 214 | 102 | | 791 | 11.8 |
| 50-51—Rochester | 68 | | 628 | 252 | .401 | 273 | 232 | .850 | 232 | 181 | 129 | 0 | 736 | 10.8 |
| 51-52—Rochester | 66 | 2498 | 772 | 328 | .425 | 417 | 377 | .904 | 333 | 262 | 201 | 5 | 1033 | 15.7 |

1951-52 GAME-BY-GAME

| G | Date | Score | Opponent | W/L | Rec. | Att. |
|----|-------|---------|-----------------------------------|-----|-------|--------|
| 1 | 11/1 | 101-97 | Baltimore Bullets | W | 1-0 | 2316 |
| 2 | 11/3 | 74-93 | Minneapolis Lakers | L | 1-1 | 3306 |
| 3 | 11/10 | 100-89 | Indianapolis Olympians | W | 2-1 | 2403 |
| 4 | 11/11 | 80-78 | New York Knickerbockers | W | 3-1 | 2980 |
| 5 | 11/13 | 91-75 | @Milwaukee Hawks | W | 4-1 | 2875 |
| 6 | 11/17 | 86-72 | Philadelphia Warriors | W | 5-1 | 2688 |
| 7 | 11/18 | 76-71* | @Fort Wayne Pistons | W | 6-1 | 3500 |
| 8 | 11/20 | 65-69** | @Indianapolis Olympians | L | 6-2 | 3350 |
| 9 | 11/22 | 65-70** | @Minneapolis Lakers | L | 6-3 | 8912 |
| 10 | 11/24 | 74-63 | Fort Wayne Pistons | W | 7-3 | 2332 |
| 11 | 11/25 | 73-75 | @Milwaukee Hawks | L | 7-4 | 10,251 |
| 12 | 11/27 | 77-73 | Milwaukee Hawks | W | 8-4 | 1766 |
| 13 | 11/29 | 78-74 | @New York Knickerbockers | W | 9-4 | 6837 |
| 14 | 12/1 | 71-66 | Milwaukee Hawks | W | 10-4 | 2895 |
| 15 | 12/2 | 81-79 | @Syracuse Nationals | W | 11-4 | 7438 |
| 16 | 12/3 | 77-70 | @Baltimore Bullets | W | 12-4 | 1375 |
| 17 | 12/4 | 80-96 | @Philadelphia Warriors | L | 12-5 | 2500 |
| 18 | 12/8 | 75-95 | Syracuse Nationals | L | 12-6 | 4022 |
| 19 | 12/9 | 84-86 | @Fort Wayne Pistons | L | 12-7 | 3700 |
| 20 | 12/15 | 75-66 | Indianapolis Olympians | W | 13-7 | 2909 |
| 21 | 12/16 | 99-95 | Baltimore Bullets | W | 14-7 | |
| 22 | 12/18 | 94-68 | @Milwaukee Hawks | W | 15-7 | 4221 |
| 23 | 12/20 | 69-54 | @Fort Wayne Pistons | W | 16-7 | 2500 |
| 24 | 12/22 | 105-89 | Philadelphia Warriors | W | 17-7 | 2770 |
| 25 | 12/25 | 87-78 | Indianapolis Olympians | W | 18-7 | 1712 |
| 26 | 12/27 | 98-85 | New York Knickerbockers | W | 19-7 | 1450 |
| 27 | 12/29 | 75-61 | Fort Wayne Pistons | W | 20-7 | 3030 |
| 28 | 12/31 | 73-77 | Indianapolis Olympians (New York) | L | 20-8 | 14,189 |
| 29 | 1/1 | 106-91 | Boston Celtics | W | 21-8 | 3328 |
| 30 | 1/5 | 103-94 | Philadelphia Warriors | W | 22-8 | 2190 |
| 31 | 1/6 | 80-91 | @Boston Celtics | L | 22-9 | 6883 |
| 32 | 1/8 | 74-107 | @New York Knickerbockers | L | 22-10 | 5247 |
| 33 | 1/11 | 83-85 | @Philadelphia Warriors | L | 22-11 | 2000 |
| 34 | 1/12 | 76-88 | Fort Wayne Pistons | L | 22-12 | |
| 35 | 1/13 | 97-70 | New York Knickerbockers | W | 23-12 | 1680 |
| 36 | 1/19 | 96-85 | Minneapolis Lakers | W | 24-12 | 4206 |
| 37 | 1/20 | 81-91** | @Minneapolis Lakers | L | 24-13 | 8972 |
| 38 | 1/21 | 78-76 | Milwaukee Hawks (Moline, IL) | W | 25-13 | 300 |
| 39 | 1/22 | 65-68 | @Indianapolis Olympians | L | 25-14 | 4417 |
| 40 | 1/24 | 90-94 | @Fort Wayne Pistons | L | 25-15 | 3000 |
| 41 | 1/26 | 104-71 | Fort Wayne Pistons | W | 26-15 | |
| 42 | 1/27 | 102-95 | Indianapolis Olympians | W | 27-15 | 3180 |
| 43 | 2/2 | 100-79 | Milwaukee Hawks | W | 28-15 | 2220 |
| 44 | 2/3 | 75-77 | @Minneapolis Lakers | L | 28-16 | 9189 |
| 45 | 2/7 | 75-86 | @Minneapolis Lakers | L | 28-17 | 9136 |
| 46 | 2/9 | 104-100 | Boston Celtics | W | 29-17 | 3366 |
| 47 | 2/10 | 111-97 | @Boston Celtics | W | 30-17 | 5622 |
| 48 | 2/12 | 86-75 | @Philadelphia Warriors | W | 31-17 | 2500 |
| 49 | 2/13 | 91-96 | @Baltimore Bullets | L | 31-18 | 1550 |
| 50 | 2/14 | 78-76 | @Syracuse Nationals | W | 32-18 | 6502 |
| 51 | 2/16 | 92-84 | Syracuse Nationals | W | 33-18 | 4200 |
| 52 | 2/17 | 100-92 | Indianapolis Olympians | W | 34-18 | 2033 |
| 53 | 2/23 | 73-83 | Minneapolis Lakers | L | 34-19 | 4208 |
| 54 | 2/24 | 124-100 | Baltimore Bullets | W | 35-19 | 1816 |
| 55 | 2/26 | 99-67 | Milwaukee Hawks | W | 36-19 | 1400 |
| 56 | 2/28 | 72-91 | Boston Celtics (Raleigh, NC) | L | 36-20 | 12,500 |
| 57 | 3/1 | 98-83 | Syracuse Nationals | W | 37-20 | 4150 |
| 58 | 3/2 | 72-76 | @Syracuse Nationals | L | 37-21 | 7529 |
| 59 | 3/3 | 96-99 | @Baltimore Bullets | L | 37-22 | |
| 60 | 3/4 | 90-92* | @New York Knickerbockers | L | 37-23 | 13,430 |
| 61 | 3/6 | 77-74 | Milwaukee Hawks | W | 38-23 | 3000 |
| 62 | 3/8 | 94-92* | Minneapolis Lakers | W | 39-23 | 4200 |
| 63 | 3/9 | 90-96 | @Minneapolis Lakers | L | 39-24 | 8291 |
| 64 | 3/11 | 82-81 | @Indianapolis Olympians | W | 40-24 | 3627 |
| 65 | 3/13 | 86-84 | @Fort Wayne Pistons | W | 41-24 | 3440 |
| 66 | 3/15 | 106-118 | Boston Celtics | L | 41-25 | 4040 |

1951-52 SEASON REVIEW

Final Statistics

| Player | G. | Min. | FGM | FGA | Pct. | FTM | FTA | Pct. | Reb. | Ass. | PF | DQ | Pts. | Avg. |
|---------------------------------|----|------|------|------|------|------|------|------|------|------|------|----|------|------|
| Bob Davies | 65 | 2394 | 379 | 990 | 38.3 | 294 | 379 | .776 | 189 | 390 | 269 | 10 | 1052 | 16.2 |
| Bobby Wanzer | 66 | 2498 | 328 | 772 | 42.5 | 377 | 417 | .904 | 333 | 262 | 201 | 5 | 1033 | 15.7 |
| Arnie Risen | 66 | 2396 | 365 | 926 | 39.4 | 302 | 431 | .701 | 841 | 150 | 258 | 3 | 1032 | 15.6 |
| Jack Coleman | 66 | 2606 | 308 | 742 | 41.5 | 120 | 169 | .710 | 692 | 208 | 218 | 7 | 736 | 11.2 |
| Arnitz Johnson | 66 | 2158 | 178 | 411 | 43.3 | 301 | 387 | .778 | 404 | 182 | 259 | 9 | 657 | 10.0 |
| Marion Spears | 66 | 1673 | 225 | 570 | 39.5 | 116 | 152 | .763 | 303 | 163 | 225 | 8 | 566 | 8.6 |
| William Holzman | 65 | 1065 | 104 | 372 | 28.0 | 61 | 85 | .718 | 106 | 115 | 95 | 1 | 269 | 4.1 |
| Alex Hannum (Roch. only) | 35 | 754 | 71 | 188 | 37.8 | 45 | 60 | .750 | 143 | 67 | 145 | 8 | 187 | 5.3 |
| Sam Ranzino | 39 | 234 | 30 | 90 | 33.3 | 26 | 37 | .703 | 39 | 25 | 63 | 2 | 86 | 2.2 |
| Ray Ragelis | 51 | 337 | 25 | 96 | 26.0 | 18 | 29 | .621 | 76 | 31 | 62 | 1 | 68 | 1.3 |
| Joe McNamee* (Roch. only) | 24 | 278 | 27 | 89 | 30.3 | 12 | 20 | .600 | 55 | 16 | 43 | 2 | 66 | 2.8 |
| Paul Noel | 8 | 32 | 2 | 9 | 22.2 | 2 | 3 | .667 | 4 | 3 | 6 | 0 | 6 | 0.8 |
| <i>Royals</i> | 66 | 1690 | 2014 | 5172 | .389 | 1661 | 2150 | .773 | 3373 | 1590 | 1804 | 62 | 5689 | 86.2 |

*Did not finish season with team

N. B. A. PLAYOFFS

WESTERN DIVISION

SERIES B

Rochester defeated Ft. Wayne, 2 games to 0

| | |
|----------------|------------------------------|
| March 18 | Ft. Wayne 78 at Rochester 95 |
| March 20 | Rochester 92 at Ft. Wayne 86 |

SERIES C

Minneapolis defeated Rochester, 3 games to 1

| | |
|----------------|--------------------------------|
| March 29 | Minneapolis 78 at Rochester 88 |
| March 30 | Minneapolis 83 at Rochester 78 |
| April 5 | Rochester 67 at Minneapolis 77 |
| April 6 | Rochester 80 at Minneapolis 82 |

INDIVIDUAL PLAYOFF STATISTICS

| Player | G | FG | | FG Pct. | FT | | Rebnd. | Assist. | Per. Fouls | Total Pts | Avg. Pts. |
|---------------------|---|------|------|---------|------|------|--------|---------|------------|-----------|-----------|
| | | Alt. | Made | | Alt. | Made | | | | | |
| Bob Davies | 6 | 92 | 37 | 40.2 | 55 | 45 | 13 | 28 | 18 | 119 | 19.8 |
| Bob Wanzer | 6 | 77 | 33 | 42.9 | 49 | 47 | 38 | 19 | 23 | 113 | 18.8 |
| Arnie Risen | 6 | 81 | 33 | 40.7 | 40 | 28 | 75 | 9 | 24 | 94 | 15.7 |
| Jack Coleman | 6 | 59 | 24 | 40.7 | 18 | 11 | 73 | 35 | 25 | 59 | 9.8 |
| Alex Hannum | 6 | 42 | 16 | 38.1 | 13 | 8 | 26 | 8 | 30 | 40 | 6.7 |
| Arnie Johnson | 6 | 27 | 8 | 29.6 | 32 | 23 | 31 | 24 | 27 | 39 | 6.5 |
| Marion Spears | 6 | 33 | 10 | 30.3 | 16 | 9 | 21 | 9 | 18 | 29 | 4.8 |
| Red Holzman | 6 | 15 | 3 | 20.0 | 6 | 1 | 6 | 2 | 3 | 7 | 1.2 |
| Ray Ragelis | 3 | 1 | 0 | 00.0 | 0 | 0 | 1 | 1 | 0 | 0 | 0.0 |

PLAYER RECORDS

RAY RAGELIS

Height 6.4. Weight 205. Alma Mater—Northwestern '51.
 Sea.—Team G. Min. FGA. FGM. Pct. FTA. FTM. Pct. Reb. Ast. PF. Disq. Pts. Avg.
 51-52—Rochester 51 337 96 25 .260 29 18 .621 76 31 62 1 68 1.3

SAM RANZINO

Height 6.1. Weight 185. Alma Mater—North Carolina State '51.
 Sea.—Team G. Min. FGA. FGM. Pct. FTA. FTM. Pct. Reb. Ast. PF. Disq. Pts. Avg.
 51-52—Rochester 39 234 90 30 .333 37 26 .703 39 25 63 2 86 2.2

Tune in Nightly Mon. thru Sat. at 6:15 for

Lowell MacMillan

"Your Zink SPORTS REPORTER"

The Program That Brings You
 ALL The Latest Sports News
 -- And Many A Scoop!!



WHEC 1460
 ON YOUR DIAL

Rochester's Beautiful

seneca cocktail lounge

Smartest rendezvous
 in downtown Rochester . . . music every
 afternoon and evening . . . no entertain-
 ment tax.

THE SENECA IS "IN
 THE CENTER OF
 EVERYTHING" — THE
 PERFECT HEADQUAR-
 TERS FOR YOUR
 FRIENDS VISITING
 ROCHESTER.

HEADQUARTERS
 FOR VISITING
 N.B.A. TEAMS

Newly decorated guest
 rooms . . . Beautifully
 modernized meeting
 rooms . . . Ideal for
 private parties . . .



Seneca

L. H. STRAWHECKER
 Managing Director

PLAYOFF RECORDS

JACK COLEMAN

| Sea.—Team | G. | Min. | FGA. | FGM. | Pct. | FTA. | FTM. | Pct. | Reb. | Asst. | PF. | Disq. | Pts. | Avg. |
|-----------------|----|------|------|------|------|------|------|-------|------|-------|-----|-------|------|------|
| 49-50—Rochester | 2 | | 20 | 7 | .350 | 1 | 1 | 1.000 | | 4 | 8 | | 15 | 7.5 |
| 50-51—Rochester | 14 | | 139 | 55 | .396 | 41 | 30 | .732 | 179 | 66 | 49 | 0 | 140 | 10.0 |
| 51-52—Rochester | 6 | 247 | 59 | 24 | .407 | 18 | 11 | .611 | 73 | 35 | 25 | 1 | 59 | 9.8 |

ROBERT DAVIES

| Sea.—Team | G. | Min. | FGA. | FGM. | Pct. | FTA. | FTM. | Pct. | Reb. | Asst. | PF. | Disq. | Pts. | Avg. |
|-----------------|----|------|------|------|------|------|------|------|------|-------|-----|-------|------|------|
| 48-49—Rochester | 4 | | 51 | 19 | .373 | 13 | 10 | .769 | | 12 | 12 | | 48 | 12.0 |
| 49-50—Rochester | 2 | | 17 | 4 | .235 | 8 | 7 | .875 | | 9 | 11 | | 15 | 7.5 |
| 50-51—Rochester | 14 | | 234 | 79 | .338 | 80 | 64 | .800 | 43 | 75 | 45 | 1 | 222 | 15.9 |
| 51-52—Rochester | 6 | 233 | 92 | 37 | .402 | 55 | 45 | .818 | 13 | 28 | 18 | 0 | 119 | 19.8 |

ALEX HANNUM

| Sea.—Team | G. | Min. | FGA. | FGM. | Pct. | FTA. | FTM. | Pct. | Reb. | Asst. | PF. | Disq. | Pts. | Avg. |
|-----------------|----|------|------|------|------|------|------|------|------|-------|-----|-------|------|------|
| 49-50—Syracuse | 11 | | 86 | 38 | .442 | 34 | 17 | .500 | | 10 | 50 | | 93 | 8.5 |
| 50-51—Syracuse | 7 | | 39 | 17 | .436 | 10 | 8 | .800 | 47 | 17 | 37 | 3 | 42 | 6.0 |
| 51-52—Rochester | 6 | 146 | 42 | 16 | .381 | 12 | 8 | .615 | 26 | 8 | 30 | 3 | 40 | 6.7 |

WILLIAM HOLZMAN

| Sea.—Team | G. | Min. | FGA. | FGM. | Pct. | FTA. | FTM. | Pct. | Reb. | Asst. | PF. | Disq. | Pts. | Avg. |
|-----------------|----|------|------|------|------|------|------|------|------|-------|-----|-------|------|------|
| 48-49—Rochester | 4 | | 40 | 18 | .450 | 6 | 5 | .833 | | 13 | 3 | | 41 | 10.3 |
| 49-50—Rochester | 2 | | 9 | 3 | .333 | 2 | 1 | .500 | | 0 | 3 | | 7 | 3.5 |
| 50-51—Rochester | 11 | | 76 | 31 | .408 | 31 | 23 | .676 | 19 | 20 | 14 | | 85 | 6.1 |
| 51-52—Rochester | 6 | 65 | 15 | 3 | .200 | 6 | 1 | .167 | 6 | 2 | 3 | 0 | 7 | 1.2 |

ARNIE JOHNSON

| Sea.—Team | G. | Min. | FGA. | FGM. | Pct. | FTA. | FTM. | Pct. | Reb. | Asst. | PF. | Disq. | Pts. | Avg. |
|-----------------|----|------|------|------|------|------|------|------|------|-------|-----|-------|------|------|
| 48-49—Rochester | 4 | | 41 | 11 | .268 | 22 | 16 | .727 | | 7 | 16 | | 38 | 9.5 |
| 49-50—Rochester | 2 | | 12 | 6 | .500 | 12 | 8 | .667 | | 5 | 11 | | 20 | 10.0 |
| 50-51—Rochester | 14 | | 107 | 48 | .449 | 78 | 61 | .782 | 126 | 10 | 68 | 2 | 157 | 11.2 |
| 51-52—Rochester | 6 | 166 | 27 | 8 | .296 | 32 | 23 | .719 | 31 | 24 | 27 | 0 | 39 | 6.5 |

ARNOLD RISEN

| Sea.—Team | G. | Min. | FGA. | FGM. | Pct. | FTA. | FTM. | Pct. | Reb. | Asst. | PF. | Disq. | Pts. | Avg. |
|-----------------|----|------|------|------|------|------|------|------|------|-------|-----|-------|------|------|
| 48-49—Rochester | 4 | | 53 | 22 | .415 | 33 | 22 | .667 | | 10 | 16 | | 66 | 16.5 |
| 49-50—Rochester | 2 | | 19 | 7 | .368 | 15 | 9 | .600 | | 4 | 7 | | 23 | 11.5 |
| 50-51—Rochester | 14 | | 239 | 93 | .389 | 135 | 87 | .644 | 196 | 33 | 59 | 2 | 273 | 19.5 |
| 51-52—Rochester | 6 | 229 | 81 | 33 | .407 | 40 | 28 | .700 | 75 | 9 | 24 | 0 | 94 | 15.7 |

MARION SPEARS

| Sea.—Team | G. | Min. | FGA. | FGM. | Pct. | FTA. | FTM. | Pct. | Reb. | Asst. | PF. | Disq. | Pts. | Avg. |
|---------------|----|------|------|------|------|------|------|------|------|-------|-----|-------|------|------|
| 48-49—Chicago | 2 | | 26 | 7 | .269 | 7 | 4 | .571 | | 2 | 9 | | 18 | 9.0 |
| 49-50—Chicago | 2 | | 22 | 9 | .409 | 10 | 5 | .500 | | 1 | 11 | | 23 | 11.5 |
| 51-52—Roch. | 6 | 123 | 33 | 10 | .303 | 16 | 9 | .563 | 21 | 9 | 18 | 0 | 29 | 4.8 |

ROBERT WANZER

| Sea.—Team | G. | Min. | FGA. | FGM. | Pct. | FTA. | FTM. | Pct. | Reb. | Asst. | PF. | Disq. | Pts. | Avg. |
|-----------------|----|------|------|------|------|------|------|------|------|-------|-----|-------|------|------|
| 48-49—Rochester | 4 | | 41 | 13 | .317 | 17 | 12 | .706 | | 9 | 9 | | 38 | 9.5 |
| 49-50—Rochester | 2 | | 17 | 8 | .471 | 13 | 11 | .846 | | 4 | 7 | | 27 | 13.5 |
| 50-51—Rochester | 14 | | 121 | 57 | .471 | 67 | 61 | .910 | 71 | 59 | 45 | 1 | 175 | 12.5 |
| 51-52—Rochester | 6 | 249 | 77 | 33 | .429 | 49 | 47 | .959 | 38 | 19 | 23 | 2 | 113 | 18.8 |

LEAGUE RULES

THE NATIONAL BASKETBALL ASSOCIATION will adhere to the current college playing rules with the following exceptions:

1. All games will be played in four 12 minute periods.
2. Each player is permitted six personal fouls.
3. All technical fouls charged to player for unsportsmanlike conduct shall also be charged as a personal foul.
4. The free-throw lane is to be bounded by two lines 12 feet apart.
5. Any player who is fouled and injured and cannot attempt his foul shot and must be removed from the game for a substitute cannot re-enter the game. His substitute is to be selected by the opposing coach.
6. If a double-foul occurs, and participating players thereby incur a sixth personal foul, such players shall attempt the foul shot before leaving the game.
7. No zone defense is allowed.
8. When a team is reduced to five eligible players, these players must finish the game, except in case of injury. Anyone of the last five players in the game, upon committing his sixth personal foul, shall be penalized by a technical foul in addition to the personal foul. The same penalty shall be imposed for any additional personal fouls committed after the sixth personal foul. An injured player who must be replaced can be replaced only by the last player who was put out of the game.
9. During the last two minutes of a regulation game, there shall be a jump ball after each successful free throw or in the case of two free throws, after the second attempted free throw, if successful. The jump shall be between the fouled player and the player whom the fouled player was playing immediately prior thereto.
10. The spaces now designated by the figures H and V alongside the free throw lane shall be occupied by two players of the defensive team with the other players alternating on both sides of the free throw lane.

GAME OFFICIALS

PRO EXPERIENCED OFFICIALS

| | | | |
|------------------|-----------------|-------------------|----------------|
| Hagen Anderson | Lou Eisenstein | R. Lautenschlager | Sam Rogolsky |
| Robert Austin | Phil Fox | Richard Lowell | James Ryan |
| William Biebel | L. E. Garnish | Victor Mettler | John Sammon |
| Sid Borgia | Anthony Gentile | Julie Meyer | Joe Serafin |
| Chas. Chuckovits | Bruce Hale | Z. J. Mihalik | Jack Silverman |
| Jocko Collins | Barney Hearn | John Nucotola | Stan Stutz |
| Charles Eckman | Arnold Heft | John Pace | Leonard Toff |
| | | | H. R. Wheeler |

ALTERNATE OFFICIALS

| | | | |
|------------------|---------------|-----------------|----------------|
| Kenneth Balgeman | Gene Englund | Jim Gaffney | Oscar Peskoff |
| Al Barillari | Frank Falzone | Hugh Gamber | Robert Reardon |
| Hy Davis | Jack Feck | C. S. Gensicken | James F. Russo |
| A. DePhillips | Walter Foley | Tom Kouzmanoff | John Schick |
| Norman Drucker | John Fox | Charles McKenna | Dick Schulz |
| | | | Donald Wilson |

REFEREE'S SIGNALS

TIME IN



CHOP WITH HAND OR FINGER

TIME OUT (CALLED)



A- TO STOP CLOCK
B- SUBSTITUTE PLAY ENTER

CANCEL SCORE



BOTH ARMS ACROSS BODY

TECHNICAL FOUL



SIGNAL FOUL - POINT UP

HOLDING



SIGNAL FOUL - GRASP WRIST

ILLEGAL USE OF HANDS



SIGNAL FOUL - STROKE

HELD BALL



FINGERS CLOSED - THUMBS UP

TRAVELING



ROTATE FISTS

ILLEGAL DRIBBLE



PATTING MOTION

TO DESIGNATE OFFENDER



HOLD UP NUMBER OF FINGERS

TIME OUT (WITH FOUL)



FOR DOUBLE FOUL ALSO
POINT AT EACH BASKET

PUSHING, CHARGING



SIGNAL FOUL - IMITATE PV

Rochester Royals Schedule

1952 - 1953 Season

A W A Y

Thursday, Nov. 6.....Fort Wayne
Friday, Nov. 7Indianapolis
Sunday, Nov. 9 Milwaukee
Thursday, Nov. 13Milwaukee at
New York
Sunday, Nov. 16 Boston
Thursday, Nov. 27 Syracuse
Sunday, Nov. 30 Milwaukee
Tuesday, Dec. 2 Indianapolis
Tuesday, Dec. 9 New York
Wednesday, Dec. 10 Baltimore
Thursday, Dec. 11 Philadelphia
Sunday, Dec. 14 Minneapolis
Tuesday, Dec. 16 Indianapolis
Sunday, Dec. 21 Indianapolis at
New York
Thursday, Dec. 25 Philadelphia
Wednesday, Dec. 31.. Milwaukee at
Fort Wayne
Sunday, Jan. 4 Minneapolis
Tuesday, Jan. 6Minneapolis at
Milwaukee
Thursday, Jan. 8 Boston at
New York
Sunday, Jan. 11 Milwaukee
Thursday, Jan. 15 Syracuse
Sunday, Jan. 18 Fort Wayne
Tuesday, Jan. 20 Indianapolis
Wednesday, Jan. 21 Baltimore
Friday, Jan. 30 Fort Wayne at
Milwaukee
Sunday, Feb. 1 Boston
Monday, Feb. 2Milwaukee at
Buffalo
Thursday, Feb. 5 Syracuse
Sunday, Feb. 8 Milwaukee
Sunday, Feb. 15 Fort Wayne
Thursday, Feb. 19 Minneapolis
Wednesday, Feb. 25 .. New York at
Boston
Tuesday, Mar. 3 New York
Wednesday, Mar. 4 Baltimore
Thursday, Mar. 5 Philadelphia
Sunday, Mar. 8 Fort Wayne
Tuesday, Mar. 10 Indianapolis
Thursday, Mar. 12 Minneapolis

Rochester Royals Schedule

1952 - 1953 Season

HOME

Saturday, Nov. 1Fort Wayne
Saturday, Nov. 8 Indianapolis
Tuesday, Nov. 11 New York
Saturday, Nov. 15 Minneapolis
Saturday, Nov. 22 Milwaukee
Sunday, Nov. 23 Boston
Tuesday, Nov. 25 Baltimore
Saturday, Nov. 29 Minneapolis
Saturday, Dec. 6 Indianapolis
Sunday, Dec. 7 Philadelphia
Saturday, Dec. 13 New York
Saturday, Dec. 20 Fort Wayne
Saturday, Dec. 27 Indianapolis
Tuesday, Dec. 30 Syracuse
Thursday, Jan. 1 Boston
Saturday, Jan. 3 Fort Wayne
Saturday, Jan. 16 Milwaukee
Saturday, Jan. 17 Minneapolis
Saturday, Jan. 24 Syracuse
Tuesday, Jan. 27 New York
Saturday, Jan. 31 Philadelphia
Tuesday, Feb. 3 Baltimore
Saturday, Feb. 7 Minneapolis
Tuesday, Feb. 10 Philadelphia
Saturday, Feb. 14 Milwaukee
Tuesday, Feb. 17 Fort Wayne
Saturday, Feb. 21 Syracuse
Tuesday, Feb. 24 Boston
Saturday, Feb. 28 Fort Wayne
Saturday, March 7 Minneapolis
Saturday, March 14 ... Indianapolis
Tuesday, March 17 Baltimore