

**THE
BEARS
1957**

The BEARS

1920 to 1957

☆ ☆ ☆

ALL TIME LEADERS

MOST WORLD CHAMPIONSHIPS . . . *SEVEN
1921-1932-1933-1940-1941-1943-1946

MOST WESTERN CHAMPIONSHIPS . . TWELVE
1920-1921-1932-1933-1934-1937-1940-1941-1942-1943-1946-1956

Only pro team to finish regular season unbeaten-untied	1934, 1942
Most Games Won—Lifetime	447
Most Games Won—League	306
Most Points Scored	12,999
Most Points One Season (1941)	663
Most Touchdowns	1,848
Most Points After Touchdown	1,400
Most First Downs	7,479
Most Consecutive Wins (Twice—1933-34 and 1941-42)	18
Most Yards Gained	139,879
Most Points Scored One Game (Dec. 8, 1940, vs. Washington) . . .	73
Most Touchdowns One Season (1941) All Games	96
Most First Downs One Season (1947) All Games	446
Most Touchdowns One Game (Dec. 8, 1940, vs. Washington)	11

*Also tied for title with Akron, 1920.



FRONT COVER

★ ★ ★

Highlights of the '56 season.
Above, Rick Casares picking up yards on his way to ground gaining title.
Bobby Watkins at left, gaining against San Francisco. Gene Schroeder, right, catching Ed Brown pass in Packer game.
Bottom, J. C. Caroline on way to goal line after picking off Baltimore pass.



More publications available at:

www.retroseasons.com/library/

The BEARS

THIRTY-EIGHT YEARS OF PROFESSIONAL FOOTBALL

Offices at:
233 West Madison Street
Chicago 6, Illinois
Telephone:
DE arborn 2-5400

Home Field:
Wrigley Field
Colors:
Orange, Navy Blue
and White

ADMINISTRATIVE STAFF

George S. Halas, President
Luke Johnsos, Vice-President
Sid Luckman, Vice-President
Clark Shaughnessy, Vice-President
J. W. McMillen, Vice-President

Ralph Brizzolara, Secretary
George Halas Jr., Treasurer
Rudolf P. Custer, Business Manager
Frank Halas, Traveling Secretary

COACHING STAFF

John L. Driscoll, Head Coach
Luke Johnsos, Assistant Coach
Clark Shaughnessy, Technical Advisor
Trainer, Ed Rozy

Phil Handler, Assistant Coach
George Connor, Assistant Coach
Sid Luckman, Quarterback Coach



INDEX

	<i>Page</i>
The Bears.....	Inside Front Cover
Bears 1957 Schedule.....	2
The Bears	3
Bears Hall of Fame.....	4 to 8
All Time Marks.....	9
Coaching Staff	10-11
Bearographies	12 to 19
Bears' 1957 Roster.....	20-21
Bears' Honor Roll.....	22 to 27
Bears' Great Records.....	28-29
Ticket Information	30
Record Versus Each Club.....	31 to 33
Bears' All Time Statistics.....	34
Armed Forces Series.....	35
Training With the Bears.....	36
Bears' 1956 Statistics.....	37
National Football League Schedule.....	38

38th Year of National Football League

Compliments of
YOUR STANDARD OIL DEALER



BEARS 1957 SCHEDULE

NON-CONFERENCE GAMES

- *Aug. 17—Pittsburgh Steelers at Gator Bowl, Jacksonville, Fla.
Score: Bears....24 Steelers7 Kickoff 8:00 P.M.
- *Aug. 24—Baltimore Colts at Xavier Stadium, Cincinnati, O.
Score: Bears....24 Colts24 Kickoff 8:30 P.M.
- *Aug. 30—New York Giants at Cotton Bowl, Dallas, Texas.
Score: Bears....17 Giants24 Kickoff 9:00 P.M.
- Sept. 8—Philadelphia at Municipal Stadium, Kansas City, Mo.
Score: Bears..... EaglesKickoff 3:00 P.M.
- *Sept. 14—Pittsburgh Steelers at Forbes Field, Pittsburgh, Pa.
Score: Bears..... EaglesKickoff 7:05 P.M.
- *Sept. 20—Cleveland Browns at Soldier Field, Chicago, Ill.
Score: Bears..... BrownsKickoff 8:35 P.M.

*Indicates night games.



CONFERENCE GAMES

(All times shown are Central Standard Time)

- Sept. 29—Green Bay Packers at City Stadium, Green Bay, Wis.
Score: Bears.....PackersKickoff 1:05 P.M.
- *Oct. 5—Baltimore Colts at Memorial Stadium, Baltimore, Md.
Score: Bears.....ColtsKickoff 7:35 P.M.
- Oct. 13—San Francisco Forty Niners at Wrigley Field, Chicago, Ill.
Score: Bears.....Forty NinersKickoff 1:05 P.M.
- Oct. 20—Los Angeles Rams at Wrigley Field, Chicago, Ill.
Score: Bears.....RamsKickoff 1:05 P.M.
- Oct. 27—Forty Niners at Kezar Stadium, San Francisco, Calif.
Score: Bears.....Forty NinersKickoff 3:35 P.M.
- Nov. 3—Los Angeles Rams at Memorial Coliseum, Los Angeles, Calif.
Score: Bears.....RamsKickoff 3:35 P.M.
- Nov. 10—Green Bay Packers at Wrigley Field, Chicago, Ill.
Score: Bears.....PackersKickoff 1:05 P.M.
- Nov. 17—Baltimore Colts at Wrigley Field, Chicago, Ill.
Score: Bears.....ColtsKickoff 1:05 P.M.
- Nov. 24—Detroit Lions at Briggs Stadium, Detroit, Mich.
Score: Bears.....LionsKickoff 12:35 P.M.
- Dec. 1—Washington Redskins at Wrigley Field, Chicago, Ill.
Score: Bears.....RedskinsKickoff 1:05 P.M.
- Dec. 8—Cardinals at Comiskey Park, Chicago, Ill.
Score: Bears.....CardinalsKickoff 1:05 P.M.
- Dec. 15—Detroit Lions at Wrigley Field, Chicago, Ill.
Score: Bears.....LionsKickoff 1:05 P.M.



The BEARS

The story of the Chicago Bears actually is the story of George Halas—and that pretty much tells the story of the great rise of professional football, namely the National Football League. Halas organized the Bears in 1920; they were known as the Decatur Staleys then. He also was one of the founders of the National Football League. Halas, as an end, and as the first coach of the team, has left his

impact on all Bear teams. Sports writers throughout the nation have recognized this fact by referring to the Bears many times as Halas U.

George Halas retired as head coach of the Bears at the end of the 1955 season, turning over the reins to Paddy Driscoll. In 30 years at the helm, he led the Bears to 308 victories, a mark unequalled by any other coach in history. As president, a position which he has held for 38 years, Halas continues to devote his tireless efforts to the Bears, and to football.

The Bears, under the guidance of Halas, have been the most successful team in the history of the pro grid. They have won seven world championships and twelve Western titles, and have participated in more championship playoffs than any other team. The Bears have won more games, scored more points and compiled more yardage; they were first with a team song, first to cover their playing field with a tarpaulin; first to travel from Coast to Coast. Spearheaded by the immortal Red Grange, the Bears revolutionized professional football and helped it to become a major sport.

Then, under astute coaching, the Bears streamlined the T-Formation with Man in Motion, making it the most potent, and most popular system in football. Nearly every professional, collegiate and high school team in the land switched to the Bears' "T" by 1944. The famous 73 to 0 triumph over the Washington Redskins in the 1940 title playoff game brought this about.

Today, the Bears' coaching staff continues its efforts to make the Modern T Formation more potent, and more appealing to the spectator. The Bears' "Slot T" has become one of the top weapons of attack in the N.F.L.



THE FIRST BEARS

The 1920 team, the original Bears: Top row—Johnson, Gepford, MacWherter, Lanum, Koehler, Veach, Sternaman, Dregesen. Center row—Young, Shank, May, High, Adkins, Clark, Feitchinger, Pearce, Lotshaw. Bottom row—Trafton, Jones, Ingwersen, Halas, Blacklock, Petty, Mintun.

★ ★ HALL OF FAME ★ ★



Grange



Nolting



Manske



Molesworth



Kopcha



Karr



Healey



Ronzani



* Hewitt



Margarita



Fortmann



Musso



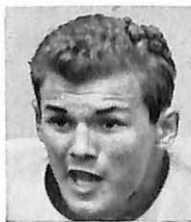
Brumbaugh



Stydahr



Sisk



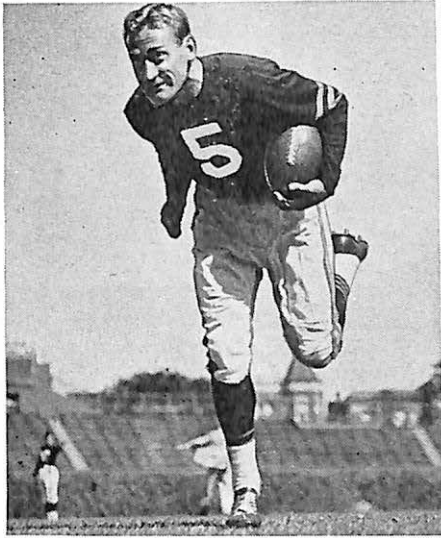
Siegal



Goebel

*—Deceased

★ ★ HALL OF FAME ★ ★



McAfee



Forte



Sprinkle



Mohardt



Bjork



Jagade



* Blacklock



Davis



Famiglietti



Logan



* Knopp



* Ippolito



Smith



Wilson



Holovak



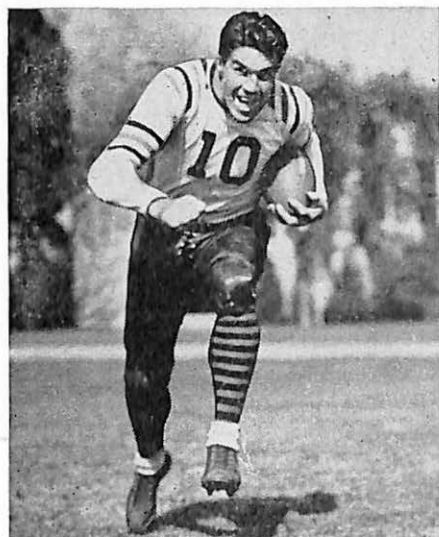
Huffine



Ingwersen

*—Deceased

★ ★ HALL OF FAME ★ ★



Manders



*Lotshaw



Turner



Feathers



Trafton



Lanum



Gallarneau



McMillen



Kolman



Walquist



Kavanaugh



Kindt



Chesney



Bray



Drulis



Stone



Osmanski

*—Deceased

★ ★ HALL OF FAME ★ ★



Nagurski



Kawal



Zeller



Snyder



Masterson



MacLeod



Anderson



Lahar



Lujack



Matuza



Perina



Maniaci



Gulyanics



Geyer



H. Davis



McLean



Trost

★ ★ HALL OF FAME ★ ★



Lyman



Carlson



Mooney



Franklin



Serini



Rykovich



Bausch



Magnani



Barwegen

THE PRO BOWL GAME

From 1938 through 1942, the league champion played a squad of stars gathered from other teams in a post-season game. Results:

Year	Winner	Score	Loser	Score	Year	Winner	Score	Loser	Score
1938	Giants	13	Stars	10	1941	Bears	35	Stars	24
1939	Packers	16	Stars	7	1942	Stars	17	Redskins	14
1940	Bears	28	Stars	14	Champions won 4, Stars 1				

In 1950, the National Football League agreed to cooperate with the Los Angeles Publishers' Association in promotion of the annual All Star Pro Bowl Game between players selected from the two divisions of the league. The coaches of the title teams in the championship playoff lead the opposing squads in the Pro Bowl Game.

Year	Winner	Score	Loser	Score
1951	East	28	West	27
1952	West	30	East	13
1953	West	27	East	7
1954	East	20	West	9
1955	West	26	East	19
1956	East	31	West	30
1957	West	19	East	10

Bears in Game
 Connor, Sprinkle
 Connor, Schroeder, Sprinkle,
 F. Williams
 Connor, Sprinkle
 J. Hoffman, Kindt, Sprinkle
 Hill, F. Williams, Wightkin, George
 Hill, George, Jones, Bishop, Wightkin,
 Brown, J. Hoffman
 Hill, Brown, George, Casares,
 Caroline, Jones, Strickland



All-Time Standings of CHICAGO BEARS

(Regular Season and Championship Playoff Games)

Year	Won	Lost	Tied	Pct.	Standing	Coach
1920	10	1	2	.909	2nd	George S. Halas
1921	10	1	1	.909	1st	George S. Halas
1922	9	3	0	.750	2nd	George S. Halas
1923	9	2	1	.777	2nd	George S. Halas
1924	7	1	4	.875	2nd	George S. Halas
1925	9	5	3	.643	6th	George S. Halas
1926	12	1	3	.923	2nd	George S. Halas
1927	9	3	2	.750	3rd	George S. Halas
1928	7	5	1	.583	5th	George S. Halas
1929	4	8	2	.333	9th	George S. Halas
1930	9	4	1	.692	3rd	Ralph Jones
1931	8	4	0	.667	3rd	Ralph Jones
1932	7	1	6	.875	1st	Ralph Jones
1933	10	2	1	.833	1st (a)	George S. Halas
1934	13	0	0	1.000	1st (b)	George S. Halas
1935	6	4	2	.600	4th	George S. Halas
1936	9	3	0	.750	2nd	George S. Halas
1937	9	1	1	.900	1st (c)	George S. Halas
1938	6	5	0	.545	3rd	George S. Halas
1939	8	3	0	.727	2nd	George S. Halas
1940	8	3	0	.727	1st (d)	George S. Halas
1941	10	1	0	.909	1st (e)	George S. Halas
1942	11	0	0	1.000	1st (x)	George S. Halas
1943	8	1	1	.889	1st (y)	Johnsos-Anderson
1944	6	3	1	.667	2nd	Johnsos-Anderson
1945	3	7	0	.300	4th	Johnsos-Anderson
1946	8	2	1	.800	1st (z)	George S. Halas
1947	8	4	0	.667	2nd	George S. Halas
1948	10	2	0	.833	2nd	George S. Halas
1949	9	3	0	.750	2nd	George S. Halas
1950	9	3	0	.750	2nd (aa)	George S. Halas
1951	7	5	0	.583	4th	George S. Halas
1952	5	7	0	.417	5th	George S. Halas
1953	3	8	1	.273	8th	George S. Halas
1954	8	4	0	.667	2nd	George S. Halas
1955	8	4	0	.667	2nd	George S. Halas
1956	9	2	1	.818	1st (ee)	Paddy Driscoll

- (a) N.F.L. divided into Eastern-Western Divisions. Bears defeated New York, Eastern winner, 23-21, for title.
 (b) New York defeated Bears, 30-13, for title.
 (c) Washington defeated Bears, 28-21, for title.
 (d) Bears defeated Washington, 73-0, for title.
 (e) Bears defeated Green Bay, 33-14, in Division Playoff. Bears defeated New York, 37-9, for title.
 (x) Washington defeated Bears, 14-6, for title.
 (y) Bears defeated Washington, 41-21, for title.
 (z) Bears defeated New York, 24-14, for title.
 (aa) Tied for Conference title; lost to Los Angeles Rams in Playoff, 24-14.
 (ee) New York defeated Bears in playoff, 47-7.

ALL TIME BEAR MARKS

The following records are the best established by players representing the Bears since 1920. They are all time Bear marks.

Most Total Points.....401 (Jack Manders, George Blanda)	Most touchdowns one season (Rick Casares) 14
Most points one season (Johnny Lujack) 109	Most forward passes one season (Sid Luckman) 176
Most total yardage (Sid Luckman) 15,394	Most forward passes one game (Johnny Lujack) 29
Most total yardage running (Bronko Nagurski) 4,031	Most forward passes completed (Sid Luckman) 949
Most touchdowns (Ken Kavanaugh) 55	Most seasons with Bears (George Traf-ton. Bulldog Turner)
Most yards running one season (Rick Casares) 1126	Most games as a Bear (Bulldog Turner) 207



They Coach the Bears

The Bears are led this season by the same coaching staff which guided the team to the Western Division title last fall. All of the coaches are veterans of the pro grid wars, either as players or coaches. All are well versed in the fundamentals of the T-Formation and have contributed to the Bears' Slot-T.

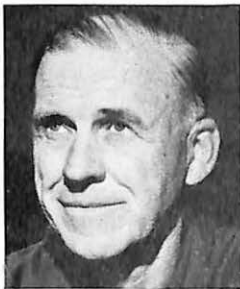
The 1957 staff consists of Paddy Driscoll, Head Coach; Clark Shaughnessy, Technical Advisor; Luke Johnsos, Assistant Coach; Phil Handler, Assistant Coach; George Connor, Assistant Coach, and Sid Luckman, Quarterback Coach.



Driscoll

JOHN L. "PADDY" DRISCOLL took over the reins in February, 1956, following the retirement of George Halas as Head Coach. Paddy is the third head coach in the 38-year-old history of the Bears. Born on Jan. 11, 1896, he attended Evanston High and later starred at Northwestern University in football, baseball and basketball. A member of the famous Great Lakes Navy eleven, he was the brilliant star of the 1919 Rose Bowl game.

Paddy joined the Bears in 1926 after performing brilliantly with the Cardinals in the N.F.L. His drop kicking and brilliant all around play gained him ranking as one of the greatest backs in pro grid annals. Was head coach at Marquette University for three seasons. Joined Bear coaching staff in 1941 and has been with club ever since.



Shaughnessy

CLARK SHAUGHNESSY has been Technical Advisor since 1951. This is his forty-second season as a football coach. Shaughnessy was born in St. Cloud, Minn., March 6, 1892. He played fullback at Minnesota from 1911 through 1914. His first coaching job was at Tulane in 1915. Shaughnessy developed a national championship team at Tulane in 1925 and then moved to Loyola of the South.

Replaced A. A. Stagg as head coach at the University of Chicago in 1933 and tutored Maroons through 1939 when football was dropped on Midway. Shaughnessy led Stanford to the Pacific Coast Conference title and a Rose Bowl triumph in 1940, scoring with the T-Formation. Transferred to University of Maryland; later coached at Pittsburgh. Also advisory coach of Washington Redskins. Led Los Angeles Rams to Western Division crown in 1949.



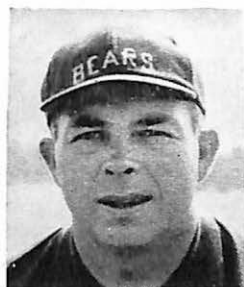
Johnsos

LUKE JOHNSOS has been associated with the Bears as a player and coach for twenty-nine years. Born on Chicago's north side, he attended Schurz High, and, like Paddy Driscoll, made a name for himself as an athlete at Northwestern University. Luke won honors in football and baseball in 1926-27 and '28. After graduation he received a trial in baseball with Cincinnati.

Johnsos joined the Bears in 1929. He was an outstanding end for seven seasons, earning all-league honors once, and teaming together with Bill Hewitt to form one of the league's top wing combinations. Luke joined the coaching staff in 1937 as an assistant. He acted as co-coach with Hunk Anderson when George Halas entered the Navy in November, 1942, and served in that capacity through the 1956 season. Luke has been with six Bear championship teams. He is associated in the printing concern of Johnsos & Coppock in Skokie, Ill.

PHIL HANDLER is in his twenty-eighth year in the National Football League as a player or coach. He is in his sixth season as a member of the Bears' staff. Phil, who was born in Fort Worth, Tex., July 1, 1908, tutors the linemen. He starred as a guard for Texas Christian University in 1927-28 and '29.

Handler played guard with the Cardinals under Ernie Nevers in 1930 and was an outstanding pro lineman for six seasons. He became a member of the Cardinal coaching staff in 1936, serving as first assistant to Milan Creighton. Handler also was chief aide to Nevers, who took over the Card reins again, and also aided Jimmy Conzelman in 1940-41 and '42. Appointed head coach in 1943, Handler piloted the Cardinals through 1945. He again became Conzelman's aide in 1946 through '48. Phil became co-coach with Buddy Parker in 1949, and assisted Curley Lambeau in 1950. He is associated with Douglas Lumber Company in Chicago.



Handler

GEORGE CONNOR is in his second year as a Bear coach. He retired as an active player following the 1955 season, after performing at tackle and linebacker for eight years. George won all-league honors and was rated one of the most versatile linemen in football. Served as co-captain with Ed Sprinkle.

Connor was born in Chicago, Jan. 21, 1925. A great star at De LaSalle, he won All-American honors at Holy Cross as a sophomore. After serving with the Navy, George entered Notre Dame, where he captained the Irish National champions in 1946 and 1947, also gaining All-American recognition both seasons. Connor is with the Hoernor Box Company in Chicago.



Connor

SID LUCKMAN coaches the quarterbacks. Described by George Halas as the man who set the pattern for all modern day T-Formation quarterbacks, Sid led the Bears to championships in 1940-41-43 and '46. He holds many N.F.L. records.

Luckman retired as a player in 1951 and has devoted much of his time to lending his talents to the young Bear quarterbacks. Sid was born in New York City, Nov. 21, 1916. He was a star at Erasmus and won top honors at Columbia University. He is head of Cellucraft in Chicago.



Luckman

ED ROZY is Trainer of the Bears. He has served in that capacity since 1948. Recognized as one of the nation's foremost trainers, Rozy is a protege of the great Matt Bullock of University of Illinois fame. Ed came to the Bears from Marquette University where he was, in addition to trainer, coach of boxing, wrestling and fencing.



Rozy

Bearographies



Atkins

DOUG ATKINS

END

TENNESSEE

Ht., 6:8. Wt., 255. Born in Humboldt, Tenn., May 8, 1930.

Member of defensive unit. Third season with Bears. Acquired in trade with Cleveland; Browns' No. 1 pick in 1953. One of biggest men in football. All American tackle at University of Tennessee; also starred in basketball and track. Married.



Bishop

BILL BISHOP

TACKLE

NORTH TEXAS

Ht., 6:4. Wt., 245. Born in Borger, Texas, May 8, 1931.

Has been starting right defensive tackle since joining Bears in 1952. Won Little All American honors at North Texas College. Married.



Blanda

GEORGE BLANDA

QUARTERBACK

KENTUCKY

Ht., 6:2. Wt., 207. Born in Youngwood, Pa., Sept. 17, 1927.

Holds record for most consecutive points after touchdown—156. Tied with Jack Manders with 401 points as Bears' all time scoring leader. Ninth season with club. Scored 81 points last season and completed 37 passes in 69 attempts for percentage of 53.6. Threw seven touchdown passes. Graduate of University of Kentucky. Married and has two children.



Brackett

M. L. BRACKETT

TACKLE

AUBURN

Ht., 6:5. Wt., 248. Born in Attalla, Ala., July 4, 1933.

Second year man. Saw action at tackle, defensive end, line-backer and middle guard in rookie season. Underwent knee operation during winter and should be vastly improved this season. Auburn product and earned all-Southeastern honors in Senior year. Has exceptional speed for lineman.



Brown

ED BROWN

QUARTERBACK

SAN FRANCISCO U.

Ht., 6:2. Wt., 205. Born in San Luis Obispo, Calif., Oct. 26, 1928.

Led National Football League in passing last season. Second to Otto Graham in 1955. Also fine runner. Fourth season with Bears. Led San Francisco University to undefeated season in 1951 and played in East-West game before entering service. Starred with Marine eleven for two seasons and showed great promise as Bear rookie in 1954. Winner of Eisenhower Trophy 1955.

BROWN'S PASSING RECORD

Year	Atts.	Comp.	Yds. Gain	Pct.	TD's	Int.	Ave. Gain
1954.....	17	10	283	58.8	3	1	16.65
1955.....	164	85	1307	51.8	9	10	7.97
1956.....	168	96	1667	57.1	11	12	9.92

Biographies

EDMUND "ZEKE" BRATKOWSKI

QUARTERBACK

GEORGIA

Ht., 6:2½. Wt., 203. Born in Danville, Ill., Oct. 20, 1931.

Back with Bears after three years in Air Force. Starred with Eglin Field last fall and was rated standout player in Service football. Brilliant rookie in 1954. Took over as starting quarterback in final four games of '54 season after George Blanda suffered injury. Led Bears to great finish and was rated top new quarterback to enter N.F.L. in years. Finished third in passing with 67 completions in 130 attempts, 1,087 yards, 8 touchdown passes, percentage of 51.5 and 8.36 average gain per pass. Also averaged 41 yards per punt. University of Georgia. Married and has one child.



Bratkowski

HARLAND CARL

HALFBACK

WISCONSIN

Ht., 6:½. Wt., 195. Born in Greenwood, Wis., Oct. 1, 1931.

Second year with club. Rated as best backfield prospect ever to enter University of Wisconsin. Plagued by knee injuries during most of college career. Starred in Service Football with Ft. Eustis, Va. Married.



Carl

J. C. CAROLINE

HALFBACK

ILLINOIS

Ht., 6:1. Wt., 190. Born in Columbia, S. C., Jan. 17, 1933.

Outstanding rookie in N.F.L. last season. Starred as defensive back, but also gave good account of himself on offense after Perry Jeter, Bobby Watkins and Harland Carl were forced to sidelines. Intercepted 6 enemy aerials for 182 yards and 2 touchdowns. One of most fabulous backs in Big Ten history. Gained 1670 yards in sophomore season at Illinois to lead nation in rushing, while breaking Red Grange's mark. Named Illini captain for 1955 but did not complete senior year.



Caroline

RICK CASARES

FULLBACK

FLORIDA

Ht., 6:2½. Wt., 225. Born in Tampa, Fla., July 4, 1931.

Outstanding fullback in football. Led N.F.L. last season with 1126 yards—20 short of all-time record held by Steve Van Buren. Also picked up 203 yards on pass receptions. Second leading scorer in league with 84 points. Topped loop in touchdowns (12). Third season with Bears, All-American schoolboy star in high school; all-time University of Florida great. All-Service standout with Fort Jackson Army eleven in 1954. Starred in basketball, track and boxing.



Casares

CASARES' RUSHING RECORD

	Atts.	Yds. Gain	Long Gain	TD's	Ave.
1955	125	672	81	4	5.4
1956	234	1126	68	12	4.8

HERMAN CLARK

GUARD

OREGON STATE

Ht., 6:3. Wt., 255. Born in Honolulu, T. H., Nov. 30, 1930.

Teams with Stan Jones to form football's greatest pair of guards. Fifth season with Bears. Outstanding rookie in 1952. Served two years in Army and rejoined club in final weeks of 1954 campaign. Shifted to offensive guard in '55. Product of Oregon State College. Married.



Clark

Beurographies



Damore

JOHN DAMORE

CENTER

NORTHWESTERN

Ht., 6:1. Wt., 228. Born in Riverside, Ill., Oct. 20, 1933.

Acquired in trade with New York Giants. Promising rookie from Northwestern University, who starred in Service Football for past two seasons. Earned All-Service honors last fall with Quantico Marines.



Dooley

JIM DOOLEY

END

MIAMI U.

Ht., 6:4. Wt., 198. Born in Stoutsville, Mo., Feb. 8, 1930.

Rejoined Bears last November in time to play in final games. Served tour of duty in Air Force, 1955-56. Played with Eglin Air Base eleven, teaming together with Zeke Bratkowski last fall. Recognized as one of top receivers in football. Joined Bears as defensive halfback in 1952; shifted to offensive end following season. All-time great at Miami University (Florida). Star of 1952 Gator Bowl game. Married and has three children.



Fortunato

JOE FORTUNATO

FULLBACK

MISSISSIPPI STATE

Ht., 6. Wt., 225. Born in Mingo Junction, O., March 28, 1930.

Third season with club. One of most improved players in N.F.L. last year. Plays line backer, although available for full-back duty, too. All-American at Mississippi State College and starred in East-West and Senior Bowl Games. Rated top athlete at Ft. Benning, Ga., in 1953-54. Married.



Galimore

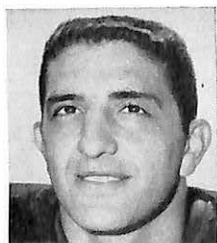
WILLIE GALIMORE

HALFBACK

FLORIDA A. & M.

Ht., 6:1. Wt., 190. Born in St. Augustine, Fla., March 30, 1935.

Promising rookie, who was picked in 1956 Player Selection. Averaged 14 touchdowns per season in three years at Florida A. & M. College. Gained 693 yards for 10 yard per try average last fall; 715 yards for an 8.3 average in 1955. Starred in Orange Blossom Game against Maryland State with 295 yards. Timed at 9.6 for 100 yards in track. Called greatest player in school's history. Married.



George

BILL GEORGE

GUARD

WAKE FOREST

Ht., 6:2½. Wt., 235. Born in Waynesburg, Pa., Oct. 27, 1929.

All-League middle guard for past two seasons and member of West's Pro Bowl squad 1956-57. All-American tackle at Wake Forest and member of College All-Stars in 1952. Heavyweight champion wrestler in college. Also starred in baseball. Alternate captain. Calls defensive signals. Sixth season with Bears. Married.

Bearographies

KLINE GILBERT

TACKLE

MISSISSIPPI

Ht., 6:2. Wt., 235. Born in Hollandale, Miss., Nov. 22, 1930.

Regular on offensive unit since joining Bears in 1953. All-American at Ole Miss and member of College All-Stars. Co-captain with Wayne Hansen for second year. Exceptional down-field blocker. Married.



Gilbert

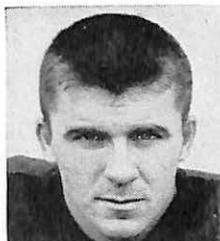
JIM HALUSKA

QUARTERBACK

WISCONSIN

Ht., 6. Wt., 190. Born in Racine, Wis., Oct. 9, 1933.

Second season with Bears. Gave good account of himself last season as rookie and figures to develop into outstanding passer and signal caller. Led Wisconsin to Rose Bowl in 1952. Had passing mark of 53.8 in college. Married.



Haluska

WAYNE HANSEN

GUARD

TEXAS WESTERN

Ht., 6:2½. Wt., 228. Born in McCamey, Tex., Oct. 6, 1928.

Shared linebacking duties last season with Joe Fortunato and Bill George. Eighth year with Bears. All-Border Conference star with Texas Western. Co-captain with Kline Gilbert. Married and has two children.



Hansen

HARLON HILL

END

FLORENCE TEACHERS

Ht., 6:3. Wt., 198. Born in Florence, Ala., May 4, 1932.

Fast gaining recognition as an all-time great. Fourth year with club. Has imposing total for three seasons of 134 passes caught, good for 3041 yards and 32 touchdowns. Famous for the "long one": scored on 79 yards touchdown pass in 1956; 86 yard touchdown pass in 1955, and 76 yards in 1954. One of long line of Little All-Americans brought before national spotlight by Bears. Helped put Florence Teachers College of Alabama in limelight. Married and has two children.

HILL'S PASS RECEIVING RECORD

	<i>No.</i>	<i>Yards</i>	<i>Long.</i>	<i>Ave.</i>	<i>Tds.</i>
	<i>Passes</i>	<i>Gain</i>	<i>Gain</i>	<i>Gain</i>	<i>Gain</i>
1954	45	1124	76	25.0	13
1955	42	789	86	18.8	9
1956	47	1128	79	24.0	11



Hill

JACK HOFFMAN

END

XAVIER

Ht., 6:5. Wt., 235. Born in Cincinnati, O., March 11, 1930.

Fourth season with Bears. Member of defensive platoon. Joined club in 1952 but served next two years in Army. Product of Xavier University of Cincinnati. Married and has one child.



Hoffman

Bearographies



Jeter

PERRY JETER

HALF BACK

CALIFORNIA POLY

Ht., 5:7½. Wt., 178. Born in Steubenville, O., May 17, 1931.

Performed in brilliant manner and was in line for Rookie of Year honor before suffering fractured ankle in second Green Bay game last season. Missed last half of '56 campaign but still finished as Bears' second highest ground gainer with 316 yards and 5.3 average. Also second in kickoff returns. Starred at California Poly, where he is rated as an all time great. Brilliant schoolboy star at Steubenville High.



Johnson

JACK JOHNSON

END

MIAMI U.

Ht., 6:3. Wt., 195. Born in Pittsburgh, Pa., Dec. 11, 1933.

Rated by Coach Andy Gustafson as one of the outstanding players ever to come out of Miami U (Fla.). All City High School star in Pittsburgh. Played defensive halfback and end for Miami. Picked to play in North-South Shrine Game, Senior Bowl and College All Star tilts. Outstanding kicker. Married.



Jones

STAN JONES

GUARD

MARYLAND

Ht., 6:1. Wt., 255. Born in Lemoyne, Pa., Nov. 24, 1931.

One of football's greatest linemen. All American in college and all-pro with the Bears. Teams with Herman Clark to form standout guard pair in N.F.L. Named College Lineman of Year in 1953 while at the University of Maryland. Won starting tackle post with Bears as rookie in 1954. Shifted to offensive guard following season and has been all-league since. Shines on defense, too, playing tackle. Teaches school in off season. Married and has one child.



Knox

RONNIE KNOX

QUARTERBACK

U.C.L.A.

Ht., 6:1½. Wt., 198. Born in Chicago, Ill., Feb. 14, 1935.

Most widely publicized gridder in Pacific Coast history. Bears' No. 3 selection. Served six months tour in National Guard this year. Gained national attention as schoolboy star at Santa Monica High. Originally enrolled at University of California but transferred to U.C.L.A. after frosh year. Star of Bruins' 1955 Pacific Coast championship eleven and had forward passing average of 61.8 per cent. Brilliant in Rose Bowl game against Michigan State. Unable to compete in senior season but played in Canada-last fall with Hamilton and Calgary.



Lee

WILLIE LEE

TACKLE

FLORIDA A & M

Ht., 6:3½. Wt., 235. Born in Phenix City, Ala., July 1, 1933.

Showed promise a year ago during training season. Starred at Florida A & M College and in service ball.

Bearographies

EARL LEGGETT

TACKLE

L.S.U.

Ht., 6:3. Wt., 255. Born in Jacksonville, Fla., March 5, 1933.

Bears' Number One pick in '57 Player Selection. Standout college tackle with Louisiana State in 1955. Rated by coaches as one of finest line prospects ever developed in South. Handicapped by fractured ankle last fall; played in spite of injury. Married.



Leggett

BILL McCOLL

END

STANFORD

Ht., 6:4. Wt., 230. Born in San Diego, Calif., April 2, 1930.

Sixth season as Bear. Caught 24 passes in 1956 for 322 yards and 4 touchdowns. Member of Bears' famed "Doctors' Club": serves as surgical resident at Stanford Hospital in San Francisco. All-American at Stanford. Married and has three children.



McColl

ED MEADOWS

END

DUKE

Ht., 6:2. Wt., 220. Born in Oxford, N. Y., Feb. 19, 1932.

Third season with club. Joined Bears in 1954, but played '55 campaign with Pitt Steelers. Member of defensive platoon. All-American tackle at Duke University. Married and has two children.



Meadows

McNEIL MOORE

HALFBACK

SAM HOUSTON STATE

Ht., 6. Wt., 188. Born in Center, Tex., July 26, 1933.

Rejoined Bears last fall after tour of duty in Army. Standout rookie in 1954 as defensive halfback. Won Little All-American honors at Sam Houston State College. Married and has one child.



Moore

TOM ROGGMAN

GUARD

PURDUE

Ht., 6. Wt., 235. Born in Mishawaka, Ind., Sept. 5, 1931.

Second year man. Won all-service honors at Quantico Marines after leaving Purdue. Helped coach Boilermakers in spring practice.



Roggman

Bearographies



Rozzell

AUBREY ROZZELL

END

DELTA STATE

Ht., 6:3. Wt., 220. Born in Goodman, Miss., Nov. 2, 1933.

Promising rookie who performs both at defensive end and line-backer. Product of tiny Delta State College in Mississippi. Married.



Schroeder

GENE SCHROEDER

END

VIRGINIA

Ht., 6:3½. Wt., 195. Born in Washington, D. C., March 3, 1929.

Back for sixth season with Bears. Recognized as one of top pass receivers in N.F.L. Won all-Southerns honors at University of Virginia; all-service at Great Lakes in 1953. Married and has two children.



Smith

RAY GENE SMITH

HALFBACK

MIDWESTERN U.

Ht., 5:10½. Wt., 188. Born in Andarko, Okla., Nov. 27, 1928.

Has been regular defensive-halfback for three seasons. Joined Bears in 1954, after starring in Service ball with Camp Lejeune Marines. Product of Midwestern University of Texas. Married.



Strickland

LARRY STRICKLAND

CENTER

NORTH TEXAS

Ht., 6:4. Wt., 245. Born in Tyler, Tex., Sept. 3, 1931.

Rates as one of top centers in football. Fourth season with Bears. Starred at Tyler Junior College and North Texas State. Married and has one child.



Wallace

STAN WALLACE

HALFBACK

ILLINOIS

Ht., 6:2. Wt., 207. Born in Hillsboro, Ill., Nov. 15, 1931.

Rejoined club late last season after serving two years in Army. Played Service ball at Ft. Eustis. Star rookie with Bears in 1954, even though handicapped by a wrist injury. University of Illinois defensive great. Starred in Rose Bowl victory over Stanford as sophomore. Member East-West squad and College All Stars. Married and has one child.

Bearographies

DICK WASHINGTON

FULLBACK

NOTRE DAME

Ht., 6:1. Wt., 210. Born in Vanderbilt, Pa., July 6, 1933.

Starred at Notre Dame as sophomore under Frank Leahy. Played Service football last two seasons with Marine elevens. Returned to Notre Dame last spring to star in annual Varsity-Alumni game. Married.



Washington

BOBBY WATKINS

Ht., 5:9½. Wt., 195. Born in New Bedford, Mass., Mar. 10, 1932.

Sidelined much of 1956 season with leg injury. Gained 276 yards for 4.1 average. Standout rookie in 1955, with 553 yard total and 5 yard average. Outstanding Big Ten ball carrier; fourth in nation in 1953 with 875 yards and 5.72 average. Ohio State's leading scorer in 1953 and '54. Married and has one child.



Watkins

BILL WIGHTKIN

TACKLE

NOTRE DAME

Ht., 6:2½. Wt., 235. Born in Detroit, Mich., July 28, 1927.

Eighth season with Bears. Alternate co-captain with Bill George. Starred at end for Notre Dame, where he was member of three Irish national championship teams. Converted to offensive tackle in 1953. All-league in '55. Married and has two children.



Wightkin

FRED WILLIAMS

TACKLE

ARKANSAS

Ht., 6:4. Wt., 245. Born in Little Rock, Ark., Feb. 8, 1929.

Member of defensive unit. Sixth season with club. All-Southwest Conference at University of Arkansas. Married and has two children.



Williams

VIC ZUCCO

HALFBACK

MICHIGAN STATE

Ht., 6. Wt., 187. Born in Renton, Pa., Sept. 4, 1935.

Starred in only season at Michigan State last fall, after gaining reputation as greatest football player in history of Wayne University (Detroit). Gained more than 1,000 yards in two seasons at Wayne. Starred in North-South Shrine Game and Senior Bowl tilt. Timed for 100 yards in 9.8. Rated by Coach Duffy Daugherty as outstanding defensive back. Married and has two children.



Zucco



CHICAGO BEARS 1957 ROSTER



CENTERS

			<i>Years Bears</i>	<i>Date of Birth</i>	<i>Hometown</i>	
50—Damore, John	6:1	228	Northwestern	1st	Oct. 20, 1933	Riverside, Ill.
51—Hansen, Wayne	6:2½	228	Texas Western	8th	Oct. 26, 1928	El Paso, Tex.
55—Strickland, Larry	6:4	245	North Texas	4th	Sept. 3, 1931	Tyler, Tex.

GUARDS

65—Clark, Herman	6:3	255	Oregon State	5th	Nov. 30, 1930	Honolulu, T. H.
61—George, Bill	6:2½	235	Wake Forest	6th	Oct. 27, 1929	Waynesburg, Pa.
78—Jones, Stanley	6:1	255	Maryland	4th	Nov. 24, 1931	Lemoyne, Pa.
67—Roggeman, Tom	6:0	235	Purdue	2nd	Sept. 5, 1931	Mishawaka, Ind.
84—Rozzell, Aubrey	6:3	220	Delta State	1st	Nov. 2, 1933	Clarksdale, Miss.

TACKLES

73—Bishop, Bill	6:4	245	North Texas	6th	May 8, 1931	Borger, Tex.
63—Brackett, M. L.	6:5	248	Auburn	2nd	July 4, 1933	Attalla, Ala.
62—Gilbert, Kline	6:2	235	Mississippi	5th	Nov. 22, 1930	Hollandale, Miss.
70—Lee, Willie	6:3½	235	Florida A & M	1st	July 1, 1933	Phenix City, Ala.
71—Leggett, Earl	6:3	255	Louisiana State	1st	Mar. 5, 1933	Jacksonville, Fla.
72—Wightkin, Bill	6:2½	235	Notre Dame	7th	July 28, 1927	Chicago, Ill.
75—Williams, Fred	6:4	245	Arkansas	6th	Feb. 8, 1929	Little Rock, Ark.

ENDS

81—Atkins, Doug	6:8	255	Tennessee	3rd	May 8, 1930	Knoxville, Tenn.
43—Dooley, Jim	6:4	198	Miami	5th	Feb. 8, 1930	Miami, Fla.

87—Hill, Harlon	6:3	198	Florence Thrs.	4th	May 4, 1932	Florence, Ala.
82—Hoffman, Jack	6:5	235	Xavier	4th	Mar. 11, 1930	Cincinnati, O.
49—Johnson, Jack	6:3	195	Miami (Fla.)	1st	Dec. 11, 1933	Pittsburgh, Pa.
83—McCull, Bill	6:4	230	Stanford	6th	Apr. 2, 1930	San Diego, Calif.
86—Meadows, Ed	6:2	220	Duke	3rd	Feb. 19, 1932	Durham, N. C.
88—Schroeder, Gene	6:3½	195	Virginia	6th	Mar. 3, 1929	Washington, D. C.

QUARTERBACKS

16—Blanda, George	6:2	207	Kentucky	9th	Sept. 17, 1929	Chicago, Ill.
12—Bratkowski, Zeke	6:2½	203	Georgia	2nd	Oct. 20, 1931	Danville, Ill.
15—Brown, Ed	6:2	205	San Francisco	4th	Oct. 26, 1928	San Luis Obispo, Calif.
18—Knox, Ronnie	6:1½	198	U.C.L.A.	1st	Feb. 14, 1935	Santa Monica, Calif.

HALFBACKS

26—Breed, Bud	6:0	183	Western Michigan	1st	Apr. 5, 1933	Paw Paw, Mich.
41—Carl, Harland	6:0½	195	Wisconsin	2nd	Oct. 1, 1931	Greenwood, Wis.
25—Caroline, J. C.	6:1	190	Illinois	2nd	Jan. 17, 1933	Columbia, S. C.
28—Galimore, Willie	6:1	190	Florida A & M	1st	Mar. 30, 1935	St. Augustine, Fla.
21—Jeter, Perry	5:7½	178	California Poly.	2nd	May 17, 1931	Steubenville, O.
29—Moore, McNeil	6:0	188	Sam Houston St.	3rd	June 26, 1933	Center, Tex.
20—Smith, Ray Gene	5:10½	188	Midwestern U.	4th	Nov. 27, 1928	Wichita Falls, Tex.
40—Wallace, Stan	6:2	207	Illinois	3rd	Nov. 15, 1931	Hillsboro, Ill.
45—Watkins, Bobby	5:9½	195	Ohio State	3rd	Mar. 10, 1932	New Bedford, Mass.
48—Zucco, Vic	6:0	187	Michigan State	1st	Sept. 4, 1932	Renton, Pa.

FULLBACKS

35—Casares, Rick	6:2½	225	Florida	3rd	July 4, 1931	Tampa, Fla.
31—Fortunato, Joe	6:0	225	Mississippi State	3rd	Mar. 28, 1930	Mingo Junction, O.
22—Washington, Dick	6:1	210	Notre Dame	1st	July 6, 1933	South Bend, Ind.

1920 ★ BEARS' HONOR ROLL ★ 1956

The following players, dating back to the first Bear team, in 1920, have made their contribution to the great success story of the Chicago Bears. They will live forever in the club's own Hall of Fame. Their respective schools, positions and the season they joined the Bears are listed (*Deceased.)

Abbey, Joe (North Texas).....End	1948	Blackman, Stub	Tackle	1930
Adkins, Roy (Miliken).....Guard	1920	Blackburn, J. A.....Tackle	1923	
Akin, Leonard (Baylor).....Guard	1942	Blanda, George (Kentucky).....QB	1949	
Allen, Eddie (Pennsylvania).....FB	1947	Bonderant, J. B.....Guard	1922	
Anderson, Heartley (N.D.)....Guard	1922	*Bolan, George (Purdue).....FB	1921	
Anderson, Henry (N.U.).....Guard	1931	Boone, J. R. (Tulsa U.).....HB	1948	
Artoe, Lee (California).....Tackle	1940	Brackett, M. L. (Auburn)....Tackle	1956	
Ashburn, Cliff (Nebraska)....Tackle	1930	Bradley, Ed (Wake Forest)...Guard	1952	
Ashmore, R. (Gonzaga).....Tackle	1947	Braidwood, Chas. (Chattanooga).End	1932	
Aspatore, Ed (Marquette)....Tackle	1934	Bramhall, Art (De Paul).....HB	1931	
Atkins, Doug (Tennessee).....End	1955	Bratkowski, Zeke (Georgia).....QB	1954	
Autrey, Billy (S.F. Austin)...Center	1953	Bray, Ray (Western Michigan).Guard	1939	
Babartsky, Al (Fordham).....Tackle	1943	Brink, Larry (No. Illinois).....End	1954	



WORLD CHAMPIONS 1932-33

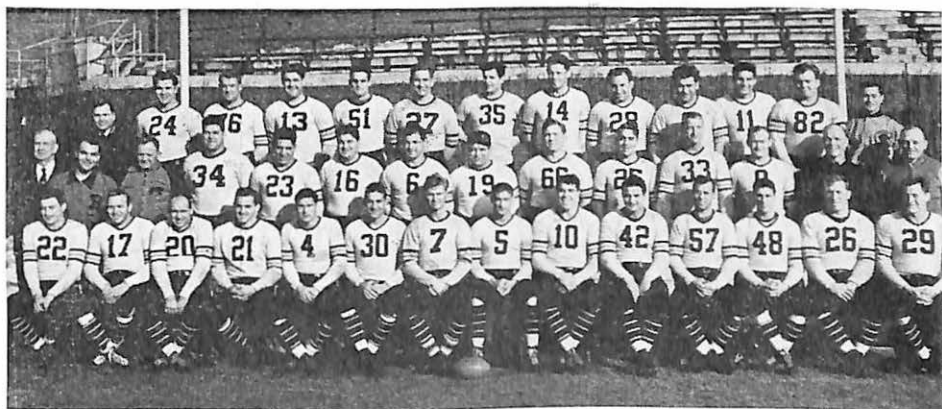
Top Row—Dr. Davis, Tackwell, Sisk, Doehring, Buckler, Franklin, Engebretsen, Lotshaw, Ralph Jones.
 Middle Row—Manders, Trafton, Murry, Burdick, Bergerson, Nagurski, Johnsos, Pearson, Halas.
 Front Row—Nesbitt, Hewitt, Brumbaugh, Molesworth, Grange, Corbett, Miller, Carlson, Kopcha.

Badaczewski, John (Wes. Res.) Guard	1953	Britton, Earl (Illinois).....FB	1925
Baisi, Al (W. Virginia).....Guard	1940	Brown, Ed (San Francisco).....QB	1954
Barker, Richard (Iowa State).Guard	1921	Brumbaugh, Carl (Florida).....QB	1930
Barwegen, Richard (Purdue)..Guard	1950	Bryan, Johnny (Chicago).....HB	1922
Bassi, Dick (Santa Clara)...Guard	1938	Buckler, Bill (Alabama).....Guard	1926
Battles, Bill (W. Virginia).....End	1939	Buivid, Ray (Marquette).....HB	1937
Bauman, Alf (N.U.).....Tackle	1948	*Burdick, Lloyd (Knox).....Tackle	1932
Bausch, Frank (Kansas).....Center	1937	Burgeis, Glenn (Tulsa U.)....Tackle	1945
Becker, Wayland (Marquette)...End	1934	Buss, Art (Michigan State)...Tackle	1934
Bell, Kay (Wash. State).....Tackle	1937	*Bussey, Young (L.S.U.).....QB	1940
Benton, Jim (Arkansas).....End	1943	Campana, Al (Youngstown)....HB	1950
Bergerson, Gil (Oregon State).Guard	1932	Campbell, Leon (Arkansas).....FB	1952
Berry, Connie Mack (N.C. State) End	1942	Carl, Harland (Wisconsin).....H.	1956
Bettridge, John (Ohio State)....HB	1937	Carlson, Jules (Oregon State).Guard	1928
Bingham, Don (Sul Ross).....HB	1956	Caroline, J. C. (Illinois).....HB	1956
Bishop, Bill (North Texas)...Tackle	1952	Casares Rick (Florida).....FB	1955
Bjork, Del (Oregon).....Tackle	1937	Castete, Jesse (McNeese St.)....HB	1956
*Blacklock, Hugh (Mich. State) Tackle	1920	Chamberlain, Guy (Nebraska)...End	1920

★ ★ BEARS' HONOR ROLL ★ ★



Chesney, Chester (De Paul) ... Center	1939	Dugger, Jack (Ohio State) End	1949
Cifers, Ed (Tennessee) End	1947	Dunlap, Bob (Oklahoma) QB	1935
Clark, Harry (West Virginia) ... HB	1940	Ecker, Ed (John Carroll) Tackle	1947
Clark, Herman (Oregon State) . Guard	1952	Elnes, Leland (Bradley) QB	1929
Clarkson, Stuart (Texas A&I) . Center	1942	Ely, Harold (Iowa) Guard	1932
Cody, Ed (Purdue) FB	1949	Engelbrechtsen, H. (N.U.) Guard	1932
Cole, Emerson (Toledo U.) FB	1952	Englund, Harry End	1921
Conkright, Bill (Oklahoma) ... Center	1937	Eickson, Harold (Wash. & Jeff.) . HB	1925
Connor, George (Notre Dame) . Tackle	1948	Evans, Fred (Notre Dame) HB	1948
Conzelman, Jimmy (Wash. U.) . HB	1920	Evans, Earl (Harvard) Tackle	1926
Corbett, George (Millikin) HB	1932	Famiglietti, Gary (Boston U.) ... FB	1938
Corzine, L. (Davis Elkins) HB	1938	Farris, Tom (Wisconsin) QB	1946
Cowan, Les (McMurry) Tackle	1951	Feathers, Beattie (Tennessee) ... HB	1934
Crawford, Fred (Duke) Tackle	1934	Febel, Fritz (Purdue) Guard	1935
Crawford, Mush Guard	1925	Federovich, John (D.&E.) Tackle	1941
Croft, Abe (S.M.U.) End	1944	Feitchinger, Andy End	1920
Cross, Bobby (S.F. Austin) ... Tackle	1952	Fenimore, Bob (Okla. A-M) ... HB	1947
Culver, Alvin (N.D.) Tackle	1932	Ferguson, J. B. Tackle	1932
Cunningham, Harold (Ohio St.) . End	1929	Fetz, Gus FB	1923



WORLD CHAMPIONS 1940

Top Row—Bausch, Poole, Stydahar, Kavanaugh, Mihal, Artoe, Plasman, Chesney, Famiglietti, Maniaci, Bray, Cole.
 Middle Row—Dr. Davis, Brumbaugh, Lotshaw, Torrance, Forte, Musso, Seigal, Martinovich, Turner, Nolting, Masterson, Osmanski, Anderson, Halas.
 Front Row—Sherman, Snyder, Nowaskey, Fortmanq, Clarke, Wilson, Manske, McAfee, Manders, Luckman, McLean, Swisher, Baisi, Kolman.

Daffer, Ted (Tennessee) End	1954	Figner, George (Colorado) HB	1953
Daniell, Jim (Ohio State) Tackle	1945	Flaherty, Pat (Marquette) End	1923
Davis, Art (Alabama State) ... Tackle	1953	Flanagan, Dick (Ohio State) . Guard	1948
Davis, Fred (Alabama) Tackle	1946	Flanagan, Latham (Car. Tech.) . End	1931
Davis, Harper (Mississippi State) . HB	1950	Fleckenstein, Bill (Iowa) Guard	1925
De Correvont, Bill (N.U.) HB	1948	Floyd, Bobby Jack (TCU) FB	1953
Dempsey, Frank (Florida) Guard	1950	Fordham, Jim (Georgia) FB	1944
Digris, Bernie (Holy Cross) . Tackle	1943	Forte, Al (Montana) Guard	1939
Dimancheff, Boris (Purdue) HB	1952	Fortmann, Danny (Colgate) ... Guard	1936
Doehring, John FB	1932	Fortunato, Joe (Miss. State) ... FB	1955
Dooley, Jim (Miami U.) End	1952	Francis, Sam (Nebraska) FB	1937
Dottley, John (Mississippi) FB	1951	Franklin, Paul (Franklin) End	1930
Dreher, Ferd (Denver U.) End	1937	Frump, Maurice (Ohio Wes.) . Guard	1930
Dressen, Charley QB	1920	Gallarneau, Hugh (Stanford) ... HB	1941
Dreyer, Wally (Wisconsin) HB	1949	Garrett, T. (Oklahoma A-M) . Center	1947
Driscoll, Paddy (N.U.) HB	1926	Garrett, W. D. (Miss. State) . Tackle	1950
Drulis, Chuck (Temple) Guard	1942	Garvey, H. (Notre Dame) End	1922
Drury, Lyle (St. Louis U.) End	1930	Garvey, Ed (Notre Dame) ... Tackle	1925
Drzewiecki, Ron (Marquette) ... HB	1955	George, Bill (Wake Forest) ... Guard	1952



★ ★ BEARS' HONOR ROLL ★ ★

Geyer, Bill (Colgate).....HB 1942	Holmer, Walt (Northwestern)....FB 1929
Gilbert, Kline (Mississippi)...Tackle 1953	Holovak, Mike (Boston College).FB 1947
Glenn, Bill (E. Illinois).....QB 1944	Hoptowitz, Al (Wash. State)..Tackle 1942
Goebel, Paul (Michigan).....End 1925	Huffine, Ken (Purdue).....FB 1921
Goodnight, O. (Hard-Simmons)..QB 1946	Hugasian, Harry (Stanford)....HB 1955
Gordon, Lou (Illinois).....Tackle 1938	Hughes, Billy (Texas).....Center 1940
Gorgal, Ken (Purdue).....HB 1955	Hunsinger, Chuck (Florida)....HB 1950
Grange, Gardie (Illinois).....End 1929	Hunt, Jackie (Marshall).....HB 1945
Grange, Harold (Illinois).....HB 1925	Hurst, BillGuard 1924
Greenwood, J. D. (Iowa).....HB 1924	Ingwerson, Burt (Illinois)....Guard 1920
Grosvenor, George (Colorado)...HB 1935	*Ippolito, Anthony (Purdue)...Guard 1943
Grygo, Al (South Carolina)....HB 1944	Jagade, Chick (Indiana).....FB 1954
Gudauskas, Pete (Murray St.) Guard 1943	Jarmoluk, Mike (Temple).....Tackle 1946
Gullyanics, George	Jecha, Ralph (N.U.).....G 1955
(Ellisville J. C.).....HB 1947	Jensvold, Leo (Iowa).....QB 1931
Halas, George (Illinois).....End 1920	Jeter, Perry (Cal. Poly.).....HB 1956
Haluska, Jim (Wisconsin).....HB 1956	Joesting, Herb (Minnesota)....FB 1931
Hammond, Henry (S.W.).....End 1937	Johnson, A (Fordham).....Tackle 1920
Hanke, J.Guard 1922	Johnson, Bert (Kentucky).....FB 1938



WORLD CHAMPIONS 1941

Top Row—Driscoll, Artoe, Mihal, Musso, Maniaci, Poole, Kavanaugh, Federovich, Stydahar, Famiglietti, Lotshaw, Frank Halas.
 Third Row—George Halas, Dr. Davis, Standlee, Forte, Seigal, Turner, Kolman, Matuza, Anderson, Johnsos, Cole.
 Second Row—Plasman, Nolting, Wilson, Bray, Fortmann, Nowaskey, Osmanski, McAfee, Luckman, Snyder, Manders.
 Front Row—Hughes, Lahar, Gallarneau, Bussey, Swisher, McLean, Clarke, Baisi, Kennie.

*Hanny, Frank (Indiana).....End 1923	Johnson, Bill (S.M.U.).....Guard 1946
Harley, Chic (Ohio State).....HB 1921	Johnson, Leo (Illinois).....HB 1920
Hansen, Cliff (Luther).....HB 1933	Johnson, O. G.FB 1924
Hansen, Wayne (Texas Wes.)..Center 1950	Johnsos, Luke (N.U.).....End 1929
Hartmen, Fred (Rice).....Tackle 1947	Jones, Edgar (Pittsburgh)....HB 1945
Hatley, John (Sul Ross).....Guard 1953	Jones, Jerry (N.D.).....Guard 1920
Healey, Ed (Dartmouth).....Tackle 1922	Jones, Stan (Maryland).....Tackle 1954
Hearnden, Tom (N.D.).....QB 1929	Karr, William (W. Virginia)....End 1933
Helwig, John (Notre Dame)...Guard 1953	Karwales, Jack (Michigan)....End 1946
Hempel, Bill (Carroll).....Tackle 1942	Kassel, Chuck (Illinois).....End 1927
Hensley, Dick (Kentucky).....End 1953	Kavanaugh, Ken (L.S.U.).....End 1940
*Hewitt, Bill (Michigan).....End 1932	Kawal, Ed (Illinois).....Center 1931
Hibbs, Jesse (So. Calif.).....Tackle 1931	Keane, Jim (Iowa).....End 1946
High, LennieHB 1920	Keefe, JerryGuard 1920
Hill, Harlon (Florence).....End 1954	Kelly, Elmo (Wichita U.).....End 1944
Hoffman, Jack (Xavier).....End 1952	Kendrick, Jim (Tex. A. & M.)...HB 1924
Hoffman, John (Arkansas)....End 1949	Keriasotis, N. (St. Ambrose)..Guard 1942

★ ★ BEARS' HONOR ROLL ★ ★

Kiesling, Walt (St. Thomas) ..Guard 1934	McDonald, Les (Nebraska)End 1937
Kindt, Don (Wisconsin)HB 1947	McEnulty, Doug (Wichita)FB 1943
King, Ralph (West Virginia) ..Tackle 1925	McIlwain, Roy (N.U.)HB 1925
Kissell, Adolph (Boston College) ..FB 1942	McLean, Ray (St. Anselm's)HB 1940
Klawitter, Dick (So. Dak. St.)C 1956	McMillen, Jim (Illinois)Guard 1924
*Knopp, Oscar (Illinois)FB 1923	McMullen, Danny (Nebraska) ..Guard 1930
*Koehler, Bob (N.U.)FB 1920	McPherson, Forest (Nebraska) ..Guard 1935
Kolman, Ed (Temple)Tackle 1940	McWherter, Kyle (Millikin)FB 1920
Kopcha, Joe (Chattanooga)Guard 1930	Macon, E. (College of Pacific) ..HB 1952
Kreamcheck, John (W. & M.) ..Tackle 1953	Magnani, Dante (St. Mary's)HB 1943
*LeFleur, Joe (Marquette)FB 1922	Maillard, Ralph (Creighton) ..Tackle 1929
LaForest, W.FB 1920	Manders, Jack (Minnesota)HB 1933
Lahar, Harold (Oklahoma)Guard 1941	Maniaci, Joe (Fordham)FB 1938
Lamb, Walter (Oklahoma)End 1946	Manske, Edgar (N.U.)End 1935
Lanum, Jake (Illinois)FB 1920	Margarita, Bob (Brown)HB 1944
Larson, Fred (N.D.)Center 1922	Martinovich, P. (C.O.P.)Guard 1940
Lawler, Allen (Texas)HB 1948	Masters, Bob (Baylor)FB 1943
Layne, Bobby (Texas)QB 1948	Masterson, Bernie (Nebraska)QB 1934
Leonard, James (Colgate)Tackle 1924	Masterson, Forrest (Iowa)Guard 1945



WESTERN CHAMPIONS 1942

Top Row—Lotshaw, Artoe, Hempel, Famiglietti, Clarkson, Petty, Wilson, Pool, Stydahar, Doller.
 Second Row—Luckman, Anderson, Wager, Matuza, Morris, Berry, Turner, Clark, Fortmann, Musso,
 Frank Halas, Johnsos.
 Third Row—Driscoll, Bray, Siegal, Akin, Osmanski, Kolman, Nolting, Drulis, Gallarneau, Brizzolara.
 Front Row—Fini, Hoptowitz, Maznicki, Nowaskey, Geyer, McLean, O'Rourke, Keriasotis.

Lemon, C. F. (Center)Tackle 1926	Mastrogany, GusEnd 1931
Lesane, Jim (Virginia)HB 1952	Matheson, Jack (W. Michigan) ..End 1947
Lipscomb, Paul (Tennessee) ..Tackle 1954	Matuza, Al (Georgetown)Center 1941
Lintzenich, Joe (St. Louis)FB 1930	*May, Walter O.Guard 1920
Logan, Jim (Indiana)Guard 1943	Maznicki, F. (Boston College) ...HB 1942
Long, Harvey (Ohio State)Tackle 1929	Meadows, E. D. (Duke)End 1954
Long, Johnny (Colgate)QB 1944	Mellekas, John (Arizona)Tackle 1956
Lowe, Loyd (No. Tex.)HB 1954	Merkel, Monte (Kansas)Guard 1943
Luckman, Sid (Columbia)QB 1939	Michaels, Ed (Villanova)Guard 1936
Lujack, Johnny (N.D.)QB 1948	Mihal, Joe (Purdue)Tackle 1940
Lyman, Link (Nebraska)Tackle 1925	Miller, Milford (Chadron)Tackle 1935
Lyon, George (Kansas State) ..Tackle 1929	Miller, Ookie (Purdue)Center 1932
MacLeod, Robert (Dartmouth) ...HB 1939	Mintun, JackCenter 1921
MacWherter, Kyle (Illinois) ...FB 1920	Milner, Bill (Duke)Guard 1947
McAfee, George (Duke)HB 1940	Mitchell, Charley (Tulsa)HB 1945
McCull, Bill (Stanford)End 1952	Minini, Frank (San Jose)HB 1947

★ ★ BEARS' HONOR ROLL ★ ★

Mohardt, Johnny (N.D.)HB	1925	*Pearson, Bert (Kansas State)Center	1929
Molesworth, K. (Monmouth)HB	1931	Pederson, Jim (Augsburg)HB	1932
Mooney, Jim (Georgetown)End	1935	Perina, Bob (Princeton)HB	1949
Mooney, Tipp (T. C. U.)HB	1943	Perini, Pete (Ohio State)FB	1954
Moore, Al (N.U.)QB	1932	Perkins, Don (Plattesville)FB	1945
Moore, McNeil (Sam Houston)HB	1954	Petty, John (Purdue)FB	1942
Morris F. (Boston U.)HB	1942	Petty, Ross (Illinois)Guard	1920
Morrison, Fred (Ohio S.)FB	1950	Plasman, Dick (Vanderbilt)End	1937
Morton, John (Missouri)End	1945	Poliski, Bill (N.D.)Guard	1929
Moser, B. (College of Pacific)Center	1951	Pollock, Bill (Penn. Military)HB	1935
Mosley, Henry (Morris Brown)HB	1955	Pool, Hampton (Stanford)End	1940
Mucha, Rudy (Washington)Guard	1945	Preston, Pat (Wake Forest)Guard	1946
Mullen, Verne (Nebraska)End	1924	Proctor, Rex (Rice)HB	1953
Mullins, Noah (Kentucky)HB	1946	Ramsey, Frank (Oregon S.)Guard	1945
Mundee, Fred (N.D.)Center	1943	Reese, Lloyd (Tenn.)FB	1946
Murray, Richard (Marquette)Tackle	1925	Rentner, Pug (N.U.)HB	1937
*Murry, Don (Wisconsin)Tackle	1924	Richards, Ray (Nebraska)Tackle	1933
Musso, George (Millikin)Guard	1933	Richman, J. H. (Illinois)Guard	1929
*Myers, Denny (Iowa)Tackle	1931	Roberts, Tom (DePaul)Guard	1943
Nagurski, Bronko (Minnesota)FB	1930	Roggeman, Tom (Purdue)Guard	1956



WORLD CHAMPIONS 1943

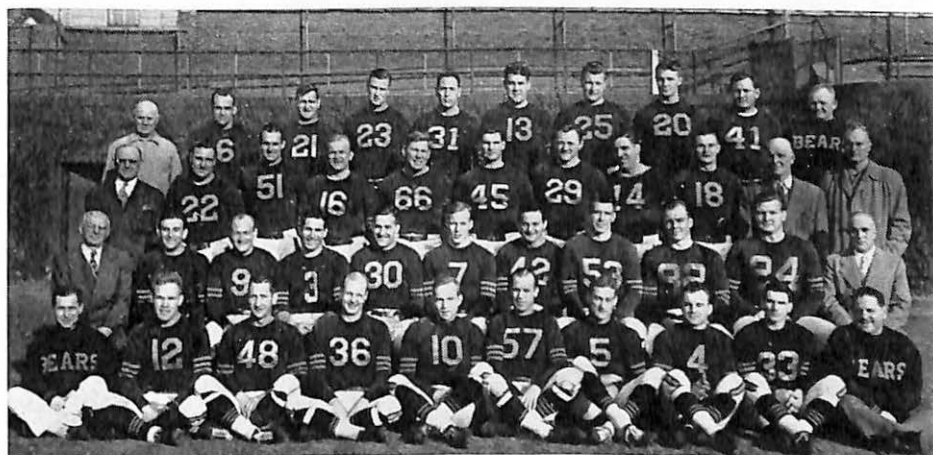
Top Row—Goldie, Babartsky, Nagurski, Musso, Snyder, Poole, Famiglietti, Benton, Berry.
 Middle Row—Driscoll, Anderson, Magnani, Luckman, McEnulty, Hoptowit, Turner, Fortmann, Matuza, Clark, Johnsos, Brizzolara.
 Front Row—Sigillo, Gadauskus, Vodicka, McLean, Wilson, Nolting, Steinkemper, Mundee, Logan, Masterson.

Neal, Ed (L.S.U.)Guard	1951	Romanik, Steve (Villanova)QB	1950
Negus, Fred (Wisconsin)Center	1950	Rosequist, Ted (Ohio State)Tackle	1925
Nelson, EverettTackle	1929	Romney, Milt (Chicago)QB	1925
Nesbitt, Dick (Drake)HB	1930	Ronzani, Gene (Marquette)QB	1932
Nolting, Ray (Cincinnati)HB	1936	Rowland, Brad (McMurry)HB	1951
Nori, Reno (De Kalb)HB	1938	Rupp, Nelson (Denison)QB	1921
Norberg, Hank (Stanford)End	1948	Ryan, John (Detroit U.)Tackle	1929
Nowaskey, Bob (G. Washington)End	1940	Rydzewski, F. (N.D.)Center	1923
O'Connell, J. F. (Penn. State)Center	1924	Rykovich, Julie (Illinois)HB	1949
O'Connell, Tom (Illinois)QB	1953	Sacrinity, Nick (Wake Forest)QB	1947
O'Quinn, John (Wake Forest)End	1950	Savoldi, Joe (N.D.)FB	1930
O'Rourke, C. (Boston College)QB	1942	Schiechl, John (Santa Clara)Center	1945
Oech, Verne (Minnesota)Guard	1936	Schroeder, Gene (Virginia)End	1951
Oelerich, John (Nebraska)HB	1938	Schuette, Paul (Wisconsin)Guard	1930
Osmanski, Bill (Holy Cross)FB	1939	Schweidler, Dick (St. Louis U.)HB	1938
Osmanski, Joe (Holy Cross)FB	1946	Scott, Ralph (Wisconsin)Tackle	1921
Patterson, Billy (Baylor)QB	1939	Senn, Bill (Knox)HB	1926
Pauly, Don (Wash.-Jeff.)Tackle	1930	Serini, Wash (Kentucky)Guard	1948
Pearce, Pard (Pennsylvania)QB	1920	Shank, J. L.HB	1920

★ ★ BEARS' HONOR ROLL ★ ★



Sherman, Saul (Chicago).....QB	1939	Tackwell, C. O. (Kansas State) ..End	1931
Shipkey, Jerry (U.C.L.A.).....FB	1953	Taft, Merrill (Wisconsin).....FB	1924
Shoemaker, Hub (Illinois).....Guard	1920	Taylor, J. R. (Ohio State)....Guard	1921
Sieberling, Gerald (Drake).....FB	1932	Thompson, Russ (Nebraska) ..Tackle	1936
Siegel, John (Columbia).....End	1939	Torrance, Jack (L.S.U.).....Tackle	1939
*Sigilio, Dom (Xavier).....Tackle	1943	Traiton, George (N.D.).....Center	1920
Sisk, John (Marquette).....HB	1932	Trost, Milt (Marquette).....Tackle	1935
Smeja, Rudy (Michigan).....End	1944	Turner, C. (Hardin-Simmons) Center	1940
Smith, Gene.....Guard	1930	*Usher, Lou (Syracuse).....Tackle	1922
Smith, H. A. (Mississippi).....End	1947	Veach, Walter.....HB	1920
Smith, J. D. (No. Car. A-T).....FB	1956	Vick, Richard (W.&J.).....QB	1925
Smith, Roy Gene (Midwestern) ..HB	1954	Vick, Ernie (Michigan).....Center	1925
Smith, Russell (Illinois).....Tackle	1921	Vodicka, Joe (Lewis Inst.).....HB	1943
Snyder, Bob (Ohio U.).....QB	1939	Voss, Tillie (Detroit U.).....End	1928
Sprinkle, Ed (Hardin-Simmons) .End	1944	Vucinich, Milt (Stanford)....Guard	1945
Stahlman, Dick (Chicago)....Tackle	1933	Wager, Clinton (St. Mary's)....End	1942
Standlee, Norm (Stanford).....FB	1941	Walquist, Laurie (Illinois).....QB	1922
Stainbach, Larry (St. Thomas) .Tackle	1930	Wallace, Stan (Illinois).....HB	1954
Sternaman, Ed (Illinois).....HB	1920	Watkins, Bobby (Ohio State)....HB	1955



WORLD CHAMPIONS 1946

Top Row—Driscoll, Perkins, Baisi, Berry, Clarkson, Stydahar, Jarmoluk, Schiechl, Lotshaw.
 Third Row—George Halas, Reese, Kavanaugh, Mucha, Turner, Stickel, Kolman, Forte, Joe Osmanski, Anderson, Johnsos.
 Second Row—F. Halas, Gallarneau, W. Osmanski, Magnani, Wilson, Sprinkle, Luckman, Preston, Bray, Davis, Brizzolara.
 Front Row—Cole, Lamb, Schweidler, Farris, Mullins, McLean, Maznicki, Margarita, Goldie.

Sternaman, Joe (Illinois).....HB	1922	Weatherly, Gerald (Rice).....Center	1950
Steinkemper, Bill (N.D.).....Tackle	1943	White, Roy (N.U.).....FB	1925
Stenn, Paul (Villanova).....Tackle	1948	White, Wilford (Ariz. State)....HB	1951
Steuber, Bob (Missouri).....HB	1943	Whitman, S. J. (Tulsa).....HB	1953
Stickel, Walt (Pennsylvania) ..Tackle	1946	Wightkin, Bill (N.D.).....End	1950
Stinchcomb, Pete (Ohio S.).....QB	1921	Williams, Bob (N.D.).....QB	1951
Stone, Billy (Bradley).....HB	1951	Williams, Fred (Arkansas) ..Tackle	1952
Strickland, Larry (No. Texas) .Center	1954	Wilson, George (N.U.).....End	1937
Sturtridge, Dick (De Paul).....HB	1928	Young, Ranny (Millikin).....Tackle	1920
Stydahar, Joe (W. Virginia) ..Tackle	1936	Yourist, Abe.....End	1923
*Sullivan, Frank (Loyola N.O.) .Center	1935	Zarnas, Gust (Ohio S.).....Guard	1938
Sumner, Charley (Will-Mary) ...HB	1955	Zeller, Joe (Indiana).....Guard	1933
Sweeney, Jake (Cincinnati) ..Tackle	1944	Zizak, Vince (Villanova).....Guard	1934
Swisher, Bob (N.U.).....HB	1938	Zorich, George (N.U.).....Guard	1944
Szymanski, Frank (N.D.).....Center	1949		

*Deceased





THE BEARS' GREAT RECORDS

The Bears have established many of the greatest records in sportdom. In 37 seasons, they have won more championships, more games, scored more points and gained more yards than any other team in professional football history. The Bears have the highest win percentage of any team in professional sports.



Rick Casares, league leading ground gainer, on one of his forays against the Baltimore Colts at Wrigley Field.

ALL-TIME RECORDS

Most World Championships	*7
Most Western Championships	12
Most games won—lifetime	447
Most games won—league.....	306
Most points scored	12,999
Most points one season (1941) all games.....	663
Most yards gained	139,879
Most touchdowns	1,848
Most points after touchdown.....	1,400
Most first downs	7,479
Most consecutive wins (twice 1933-34, 1941-42).....	18
Most touchdowns one season (1941) All games.....	96
Most first downs one season (1947) All games.....	446
Most points scored one game (Dec. 8, 1940 vs. Washington).....	73
Most touchdowns one game (Dec. 8, 1940 vs. Washington).....	11
Most touchdown passes one game.....	7
(Nov. 14, 1943 vs. New York Giants)	
Most touchdowns by rushing one season (1941).....	37
Most touchdowns by rushing one game (Oct. 19, 1941).....	7
Fewest punts in one season (1941).....	32
Most punts in one game (Oct. 22, 1933).....	17
Fewest yards allowed opponents rushing (1942).....	519

*Bears also tied for still another world title: 1920.



THE BEARS' GREAT RECORDS

ALL-TIME INDIVIDUAL

The Bears, through their 37 years, have always stressed team play. However, all-time marks are held by the following Bears:

Most consecutive points after touchdown.....	156
(George Blanda—8 games in 1951, 11 in 1952, 12 in 1953, 7 in 1954, 11 in 1955 and 4 in 1956)	
Most touchdown passes one season.....	28
(Sid Luckman in 1943—10 games)	
Most touchdown passes one game.....	7
(Sid Luckman, vs. New York Giants, Nov. 14, 1943)	
Most World Championship teams.....	4
(Bulldog Turner, Sid Luckman, George Wilson, 1940-41-43-46)	
Longest run with fumble.....	98 yards
(George Halas, vs. Thorpe's Indians, Nov. 4, 1923)	
Most field goals (Drop Kicks).....	49
(Paddy Driscoll, with Cardinals 1921-25, Bears 1926-28)	



TEAM PLAYOFF RECORDS

The Bears have participated in more championship playoffs than any other team. Naturally, they hold most of the records.

Most championships won.....	*7	Most yards gained one game rushing	382
Most title playoffs participated in....	9	(vs. Washington, Dec. 8, 1940)	
Most points in playoffs.....	245	Most extra points	26
Most yards gained	2,831	Most passes attempted	218
Most yards gained one game	501	Most field goals	9
(vs. Washington, Dec. 8, 1940)		Most field goals one game	
Most points in one game	73	—twice (1933-1941)	3
(vs. Washington, Dec. 8, 1940)		Most field goals attempted.....	16
Highest winning score	73	Intercepted most passes	29
Most yards gained rushing.....	1,358	Intercepted most passes one game	8
Most yards gained passing.....	1,473	(vs. Washington, Dec. 8, 1940)	
Most first downs	124	Most yards interceptions returned	355
Most passes completed	93	Best punting average	53.5
Most first downs rushing.....	74	(vs. New York Giants, Dec. 21, 1941)	
Most touchdowns	32	Most yards punt returns.....	193
Most touchdowns one game	11	Most penalties	55
(vs. Washington, Dec. 8, 1940)		Most yards penalized	470
Most touchdowns by running.....	21	Most yards penalized one game	102
Most touchdowns by passing	11	(vs. New York Giants, Dec. 15, 1946)	
Most touchdowns running one game....	10	Most yards passing (one game).....	371
Most touchdowns passing one game....	5	(vs. Washington, 1937)	

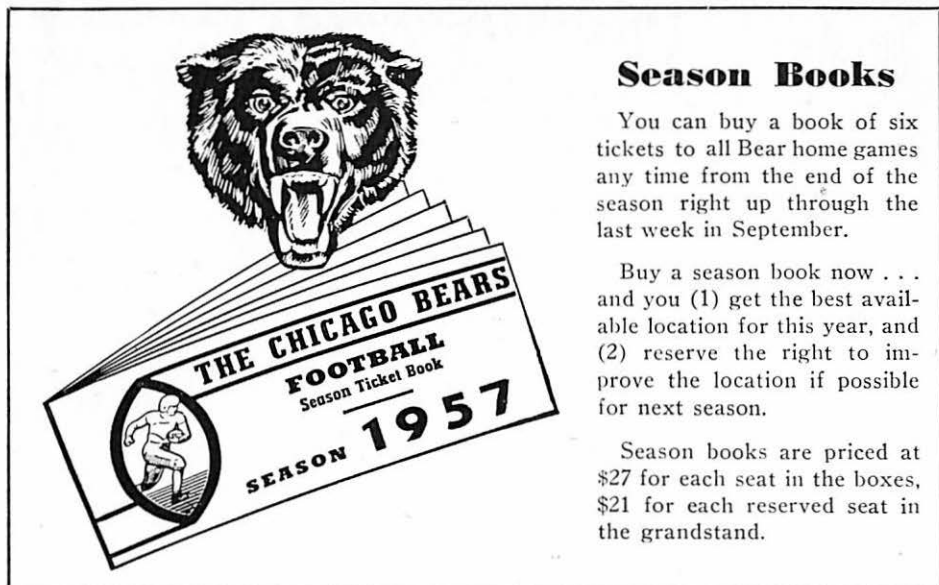
*Also tied for title.



INDIVIDUAL PLAYOFF RECORDS

Most touchdown passes one game.....	5
(Sid Luckman, Bears vs. Washington, 1943)	
Most touchdown passes caught one game.....	2
(Bill Karr, Dante Magnani, Harry Clark)	
Most passes intercepted	4
(Bulldog Turner, 1940-41-42-43-46)	
Most punt returns	8
(Keith Molesworth)	
Most field goals one game	3
(Jack Manders, Bears vs. New York Giants, 1933)	
(Bob Snyder, Bears vs. New York Giants, 1941)	
Most Kickoff Returns (one game).....	7
(Don Bingham vs. N. Y. Giants, 1956)	

Bears' Ticket Information



Season Books

You can buy a book of six tickets to all Bear home games any time from the end of the season right up through the last week in September.

Buy a season book now . . . and you (1) get the best available location for this year, and (2) reserve the right to improve the location if possible for next season.

Season books are priced at \$27 for each seat in the boxes, \$21 for each reserved seat in the grandstand.

Gift Certificates

Season books make ideal gifts for Christmas, birthdays, anniversaries and all other occasions for both young and old. Attractive gift certificates are available at no extra cost.

Individual Game Tickets

Individual Game Tickets are available at the Chicago Bears Office; at Lyttons, State and Jackson, and Wrigley Field, Clark and Addison Streets. Ticket Prices are as follows: Box Seats, \$4.50; Grand Stand Seats, \$3.50. Kickoff time for all Bear games at Wrigley Field is 1:05 p.m.

Mail Orders

Mail orders are accepted if accompanied by money order or check. Be sure to add 20 cents for postage and handling for each order.

The Chicago Bears' Business Office is located at 233 W. Madison Street.

Telephone — Dearborn 2-5400



BEARS' SONG

Bear Down—Chicago Bears, make every play clear the way to victory;
Bear Down—Chicago Bears, put up a fight with a might so fearlessly.
We'll never forget the way you thrilled the nation, with your T-Formation.
Bear Down—Chicago Bears, and let 'em know why you are wearing the crown;
You're the pride and joy, of Illinois. Chicago Bears—Bear Down!

Bears' Club Against Club Records

BEARS vs. BALTIMORE

(Bears: Won 4, Lost 4, None Tied)

1953	Baltimore 13—Bears 9 Baltimore 16—Bears 14	1954	Bears 28—Baltimore 9 Bears 28—Baltimore 13	1956	Baltimore 28—Bears 21 Bears 58—Baltimore 27
		1955	Baltimore 23—Bears 17 Bears 38—Baltimore 10		

Points—Bears, 213; Baltimore, 139

BEARS vs. CARDINALS

(Bears Won 42; Cardinals Won 19; Tied 6)

1920	Cardinals 7—Bears 6 Bears 10—Cardinals 0	1932	Cardinals 0—Bears 0 Bears 34—Cardinals 0	1943	Bears 20—Cardinals 0 Bears 35—Cardinals 24
1921	Cardinals 0—Bears 0	1933	Bears 12—Cardinals 9 Bears 22—Cardinals 6	1945	Cardinals 16—Bears 7 Bears 28—Cardinals 20
1922	Cardinals 6—Bears 0 Cardinals 9—Bears 0	1934	Bears 20—Cardinals 0 Bears 17—Cardinals 6	1946	Bears 34—Cardinals 17 Cardinals 35—Bears 28
1923	Bears 3—Cardinals 0	1935	Cardinals 7—Bears 7 Bears 13—Cardinals 0	1947	Cardinals 31—Bears 7 Cardinals 30—Bears 7
1924	Bears 6—Cardinals 0 Bears 21—Cardinals 0	1936	Bears 7—Cardinals 3 Cardinals 14—Bears 7	1948	Bears 28—Cardinals 17 Cardinals 24—Bears 21
1925	Cardinals 9—Bears 0 Cardinals 0—Bears 0	1937	Bears 16—Cardinals 7 Bears 42—Cardinals 28	1949	Bears 17—Cardinals 7 Bears 52—Cardinals 21
1926	Bears 16—Cardinals 0 Cardinals 0—Bears 0	1938	Bears 16—Cardinals 13 Bears 34—Cardinals 28	1950	Bears 27—Cardinals 6 Cardinals 20—Bears 10
1927	Bears 10—Cardinals 0 Cardinals 3—Bears 0	1939	Bears 44—Cardinals 7 Bears 48—Cardinals 7	1951	Cardinals 28—Bears 14 Cardinals 24—Bears 14
1928	Bears 13—Cardinals 0 Bears 34—Cardinals 0	1940	Cardinals 21—Bears 7 Bears 31—Cardinals 23	1952	Cardinals 21—Bears 10 Bears 10—Cardinals 7
1929	Cardinals 0—Bears 0 Cardinals 40—Bears 6	1941	Bears 53—Cardinals 7 Bears 34—Cardinals 24	1953	Cardinals 24—Bears 17 1954
1930	Bears 32—Cardinals 6 Bears 6—Cardinals 0 Bears 9—Cardinals 7	1942	Bears 41—Cardinals 14 Bears 21—Cardinals 7	1955	Bears 29—Cardinals 7 Cardinals 53—Bears 14
1931	Bears 26—Cardinals 13 Bears 18—Cardinals 7			1956	Bears 10—Cardinals 3

Points—Bears, 1,195; Cardinals, 773

BEARS vs. CLEVELAND BROWNS

(Cleveland Won 2; Bears Won None; None Tied)

1951	Cleveland 42—Bears 21	1954	Cleveland 39—Bears 10
------	-----------------------	------	-----------------------

Points—Cleveland, 84; Bears, 31

BEARS vs Combines

(Bears Won 3; Combines Won None; None Tied)

1943	Bears 48—Phil-Pitt 21	1944	Bears 34—Card-Pitt 7 Bears 49—Card-Pitt 7
------	-----------------------	------	--

Points—Bears, 131; Combines, 35

BEARS vs DETROIT

(Bears Won 29; Detroit Won 15; Tied 2)

1934	Bears 19—Detroit 16 Bears 10—Detroit 7	1942	Bears 10—Detroit 0 Bears 42—Detroit 0	1950	Bears 35—Detroit 21 Bears 6—Detroit 3
1935	Detroit 20—Bears 20 Detroit 14—Bears 7	1943	Bears 27—Detroit 21 Bears 35—Detroit 14	1951	Bears 28—Detroit 23 Detroit 41—Bears 28
1936	Bears 12—Detroit 10 Detroit 13—Bears 7	1944	Detroit 21—Bears 21 Detroit 41—Bears 21	1952	Bears 24—Detroit 23 Detroit 45—Bears 21
1937	Bears 28—Detroit 20 Bears 13—Detroit 0	1945	Detroit 16—Bears 10 Detroit 35—Bears 28	1953	Detroit 20—Bears 16 Detroit 13—Bears 7
1938	Detroit 13—Bears 7 Detroit 14—Bears 7	1946	Bears 45—Detroit 24 Bears 33—Detroit 24	1954	Detroit 48—Bears 23 Bears 28—Detroit 24
1939	Detroit 10—Bears 0 Bears 23—Detroit 13	1947	Bears 34—Detroit 14 Bears 28—Detroit 0	1955	Bears 24—Detroit 14 Bears 21—Detroit 20
1940	Bears 7—Detroit 14 Detroit 17—Bears 14	1948	Bears 42—Detroit 14 Bears 27—Detroit 24	1956	Detroit 42—Bears 10 Bears 38—Detroit-21
1941	Bears 49—Detroit 0 Bears 24—Detroit 7	1949	Bears 28—Detroit 7		

Points—Bears, 1,030; Detroit, 793

Bears' Club Against Club Records

BEARS vs. GREEN BAY

(Bears Won 45; Green Bay Won 25; Tied 6)

1921 Bears 20—Green Bay 0	1933 Bears 14—Green Bay 7	1945 Green Bay 31—Bears 21
1923 Bears 3—Green Bay 0	Bears 10—Green Bay 7	Bears 28—Green Bay 24
1924 Green Bay 5—Bears 0	Bears 7—Green Bay 6	1946 Bears 30—Green Bay 7
Bears 3—Green Bay 0	1934 Bears 24—Green Bay 10	Bears 10—Green Bay 7
1925 Green Bay 14—Bears 10	Bears 27—Green Bay 14	1947 Green Bay 29—Bears 20
Bears 21—Green Bay 0	1935 Green Bay 7—Bears 0	Bears 20—Green Bay 7
1926 Green Bay 6—Bears 6	Green Bay 17—Bears 14	1948 Bears 45—Green Bay 7
Bears 19—Green Bay 13	1936 Bears 30—Green Bay 3	Bears 7—Green Bay 6
Green Bay 3—Bears 3	Green Bay 21—Bears 10	1949 Bears 17—Green Bay 0
1927 Bears 7—Green Bay 6	Bears 14—Green Bay 2	Bears 24—Green Bay 3
Bears 14—Green Bay 6	Green Bay 24—Bears 14	1950 Green Bay 31—Bears 21
1928 Green Bay 12—Bears 12	Bears 2—Green Bay 0	Bears 28—Green Bay 14
Green Bay 16—Bears 6	Green Bay 24—Bears 17	Bears 31—Green Bay 20
Green Bay 6—Bears 0	1939 Green Bay 21—Bears 16	Bears 24—Green Bay 13
1929 Green Bay 23—Bears 0	Bears 30—Green Bay 27	1952 Bears 24—Green Bay 14
Green Bay 14—Bears 0	1940 Bears 41—Green Bay 10	Green Bay 41—Bears 28
Green Bay 25—Bears 0	Bears 14—Green Bay 7	1953 Bears 17—Green Bay 13
1930 Green Bay 7—Bears 0	1941 Bears 25—Green Bay 17	Bears 21—Green Bay 21
Green Bay 13—Bears 12	Green Bay 16—Bears 14	1954 Bears 10—Green Bay 3
Bears 21—Green Bay 0	*Bears 33—Green Bay 14	Bears 28—Green Bay 23
1931 Green Bay 7—Bears 0	1942 Bears 44—Green Bay 28	1955 Green Bay 24—Bears 3
Green Bay 6—Bears 2	Bears 38—Green Bay 7	Bears 52—Green Bay 31
Bears 7—Green Bay 6	1943 Green Bay 21—Bears 21	1956 Bears 37—Green Bay 21
1932 Green Bay 0—Bears 0	Bears 21—Green Bay 7	Bears 38—Green Bay 14
Green Bay 2—Bears 0	1944 Green Bay 42—Bears 28	
Bears 9—Green Bay 0	Bears 21—Green Bay 0	

Points—Bears, 1,288; Green Bay, 963

*—Divisional Playoff.

BEARS vs. LOS ANGELES

(Bears Won 12; Los Angeles Won 9; Tied 1)

1946 Los Angeles 28—Bears 28	1950 Bears 24—Los Angeles 20	1954 Los Angeles 42—Bears 38
Bears 27—Los Angeles 21	Bears 24—Los Angeles 14	Bears 24—Los Angeles 13
1947 Bears 41—Los Angeles 21	*Los Angeles 24—Bears 14	1955 Bears 31—Los Angeles 20
Los Angeles 17—Bears 14	1951 Los Angeles 42—Bears 17	Bears 24—Los Angeles 3
1948 Bears 42—Los Angeles 21	1952 Los Angeles 31—Bears 7	1956 Bears 35—Los Angeles 24
Bears 21—Los Angeles 6	Los Angeles 40—Bears 24	Bears 30—Los Angeles 21
1949 Los Angeles 31—Bears 16	1953 Los Angeles 38—Bears 24	
Los Angeles 27—Bears 24	Bears 24—Los Angeles 21	

Points—Bears, 553; Los Angeles, 502

*—Conference Playoff.

BEARS vs. NEW YORK GIANTS

(Bears Won 20; New York Won 13; Tied 2)

1925 Bears 19—New York 7	1932 Bears 28—New York 8	1939 New York 16—Bears 13
New York 9—Bears 0	Bears 6—New York 0	1940 Bears 37—New York 21
1926 Bears 7—New York 0	1933 Bears 14—New York 10	1941 *Bears 37—New York 9
1927 New York 13—Bears 7	New York 3—Bears 0	1942 Bears 26—New York 7
1928 Bears 13—New York 0	*Bears 23—New York 21	1943 Bears 56—New York 7
1929 New York 26—Bears 14	1934 Bears 27—New York 7	1946 New York 14—Bears 0
New York 14—Bears 9	Bears 10—New York 9	*Bears 24—New York 14
New York 34—Bears 0	*New York 30—Bears 13	1948 Bears 35—New York 14
1930 New York 13—Bears 0	1935 Bears 20—New York 3	1949 New York 35—Bears 28
Bears 12—New York 0	New York 3—Bears 0	1956 New York 17—Bears 17
1931 Bears 6—New York 6	1936 Bears 25—New York 7	*New York 47—Bears 7
Bears 12—New York 6	1937 New York 3—Bears 3	
New York 25—Bears 6		

Points—Bears, 547; New York Giants, 404

*—Championship Playoff Game.

BEARS vs. PHILADELPHIA

(Bears Won 12; Philadelphia Won 1; Tied 1)

1933 Philadelphia 3—Bears 3	1939 Bears 27—Philadelphia 14	1947 Bears 40—Philadelphia 7
1935 Bears 39—Philadelphia 0	1941 Bears 49—Philadelphia 14	1948 Philadelphia 12—Bears 7
1936 Bears 17—Philadelphia 0	1942 Bears 45—Philadelphia 14	1949 Bears 38—Philadelphia 21
Bears 28—Philadelphia 7	1944 Bears 28—Philadelphia 7	1955 Bears 17—Philadelphia 10
1938 Bears 28—Philadelphia 6	1946 Bears 21—Philadelphia 14	

Points—Bears, 387; Philadelphia, 129

Bears' Club Against Club Records

BEARS vs. PITTSBURGH

(Bears Won 10; Pittsburgh Won None; None Tied)

1934 Bears 28—Pittsburgh 0	1937 Bears 7—Pittsburgh 0	1945 Bears 28—Pittsburgh 7
1935 Bears 23—Pittsburgh 7	1939 Bears 32—Pittsburgh 0	1947 Bears 49—Pittsburgh 7
1936 Bears 27—Pittsburgh 9	1941 Bears 34—Pittsburgh 7	1949 Bears 30—Pittsburgh 21
Bears 26—Pittsburgh 6		

Points—Bears, 284; Pittsburgh 64

BEARS vs. SAN FRANCISCO

(Bears Won 8; San Francisco Won 5; None Tied)

1950 Bears 32—San Francisco 20	1953 San Francisco 35—Bears 28	1955 San Francisco 20—Bears 19
Bears 17—San Francisco 0	San Francisco 24—Bears 14	Bears 34—San Francisco 23
1951 Bears 13—San Francisco 7	1954 San Francisco 31—Bears 24	1956 Bears 31—San Francisco 7
1952 San Francisco 40—Bears 16	Bears 31—San Francisco 27	Bears 38—San Francisco 21
Bears 20—San Francisco 17		

Points—Bears, 317; San Francisco, 272

BEARS vs WASHINGTON

(Bears Won 10; Washington Won 5; None Tied)

1937 *Washington 28—Bears 21	1942 *Washington 14—Bears 6	1947 Bears 56—Washington 20
1938 Bears 31—Washington 7	1943 Washington 21—Bears 7	1948 Bears 48—Washington 13
1940 Washington 7—Bears 3	*Bears 41—Washington 21	1949 Bears 31—Washington 21
*Bears 73—Washington 0	1945 Washington 28—Bears 21	1951 Bears 27—Washington 0
1941 Bears 35—Washington 21	1946 Bears 24—Washington 20	1953 Bears 27—Washington 24

Points—Bears, 451; Washington, 245



Ed Brown, running from quarterback, with Rick Casares and John Hoffman doing the blocking, against Detroit Lions.

*—Championship Playoff Game.

TEAM LEADERS

The Bears have been leaders in scoring, total offense, running and passing through the years. Adequate statistics have only been compiled since 1932, but they show that the Bears have been first in scoring nine times, total offense twelve times, nine times in rushing and six times in passing—thus being first in all four departments more than any other team.

Following is a year by year compilation:

Year	Scoring	Pts.	Offense	Yds.	Rushing	Yds.	Passing	Yds.
1932	Packers	152	BEARS	2,755	BEARS	1,770	BEARS	1,013
1933	Giants	244	Giants	2,970	Redskins	2,367	Giants	1,335
1934	BEARS	286	BEARS	3,750	Lions	2,763	Packers	1,165
1935	BEARS	192	BEARS	3,454	BEARS	2,096	Packers	1,416
1936	Packers	248	Lions	3,703	Lions	2,885	Packers	1,629
1937	Packers	220	Packers	3,201	Lions	2,074	Packers	1,398
1938	Packers	223	Packers	3,037	Lions	1,893	Redskins	1,536
1939	BEARS	298	BEARS	3,988	BEARS	2,043	BEARS	1,965
1940	Redskins	245	Packers	3,400	BEARS	1,818	Redskins	1,887
1941	BEARS	396	BEARS	4,265	BEARS	2,156	BEARS	2,002
1942	BEARS	376	BEARS	3,900	BEARS	1,881	Packers	2,407
1943	BEARS	303	BEARS	4,045	Phil-Pitt	1,730	BEARS	2,310
1944	Eagles	267	BEARS	3,239	Eagles	1,663	Redskins	2,021
1945	Eagles	272	Redskins	3,549	Rams	1,714	Rams	1,857
1946	BEARS	289	Rams	3,763	Packers	1,765	Rams	2,080
1947	BEARS	363	BEARS	5,053	Rams	2,171	Redskins	3,336
1948	Cards	395	Cards	4,694	Cards	2,560	Redskins	2,861
1949	Eagles	364	BEARS	4,873	Eagles	2,607	BEARS	3,055
1950	Rams	466	Rams	5,420	Giants	2,336	Rams	3,709
1951	Rams	392	Rams	5,506	BEARS	2,408	Rams	3,296
1952	Rams	349	Browns	4,352	49ers	1,905	Browns	2,566
1953	49ers	372	Eagles	4,811	49ers	2,230	Eagles	3,089
1954	Lions	337	Rams	5,187	49ers	2,498	BEARS	3,104
1955	Browns	349	BEARS	4,316	BEARS	2,388	Eagles	2,472
1956	BEARS	363	BEARS	4,537	BEARS	2,468	Rams	2,419

BEARS—IRON MEN

The 1925 Chicago Bears were the real Iron Men of modern day football. Featuring Red Grange, who joined the squad on Thanksgiving Day, the Bears of that season played seven games in nine days, for an all-time record. Three of the games were played on successive afternoons. The Bears of 1925 played in Philadelphia, New York, Washington, Boston, Pittsburgh, Detroit and Chicago from December 5th to December 13th.



THEY COVER THE BEARS

The following members of the press, radio and television will cover the Chicago Bears throughout the 1957 National Football League season:

Chicago Tribune.....	George Strickler, Cooper Rollow
Chicago Sun Times.....	Bruce Morrison, Gene Kessler
Chicago American.....	Harry McNamara, Leo Fischer
Chicago Daily News.....	Howie Roberts, John Carmichael
Associated Press.....	Jerry Liska, Chuck Chamberlain
United Press.....	Ed Sainsbury
International News.....	Pat Joyce, Bob Glass
WGN Radio.....	Jack Brickhouse, Irv Kupcinet, Lloyd Pettit
CBS Television.....	Red Grange

ANNUAL ARMED FORCES BENEFIT FOOTBALL SERIES



Sponsored by the four great Chicago daily newspapers, the Chicago American, Daily News, Sun-Times and Tribune, in cooperation with the Chicago Newspaper Publishers Association, the twelfth annual Armed Forces Benefit Football Game will be held on Friday night, September 20th, in Soldier Field, with the Chicago Bears meeting the Cleveland Browns.

It was originated in 1946, following a meeting in Washington attended by Dwight D. Eisenhower, then Army Chief of Staff; Admiral Chester K. Nimitz, representing the Navy; General Ira Eaker, acting for the head of the Air Force, General Spaatz; Ralph Cannon, then sports editor of the Chicago Herald-American, and George Halas.

The game has been played every year since. It was sponsored in 1946 and 1947 by the Chicago American, and by the Chicago Sun-Times in 1949, 1950, 1951, 1952, 1953 and 1954. A new era in the history of the Armed Forces Series was recorded in 1955, when the four Chicago dailies joined together to sponsor the

game. Through their fine cooperation, the series is destined to reach new heights, and thus achieve a goal far greater than the originators could visualize back in 1946.

The eleven Armed Forces games to date have netted \$438,350 to the official relief agencies of the Army, Navy and Air Force, which share equally in the net proceeds. They are the Army Emergency Relief, the Navy Relief Society and the Air Force Aid Society.

Specifically, the Armed Forces Game helps these official relief agencies to provide: financial assistance to widows and orphans of servicemen . . . care and assistance to service personnel, to wounded servicemen and their families . . . hospital medical-assistance to needy families and dependents of servicemen . . . prenatal and obstetrical care to needy servicemen's families . . . and cash grants to service personnel and dependents in emergencies.

SCORES OF ARMED FORCES SERIES

1946—Bears . . .19	New York Giants. 0	1952—Bears . . .17	New York Giants. 7
1947—Bears . . .28	Washington 7	1953—Browns .20	Bears14
1948—Bears . . .42	Boston Yanks 7	1954—Bears . . .28	New York Giants.24
1949—Bears . . .20	New York Giants.17	1955—Bears . . .24	Browns 21
1950—Bears . . .10	Philadelphia 3	1956—Browns .24	Bears14
1951—Browns .32	Bears21		

Eisenhower Trophy Award—Outstanding Player of Game

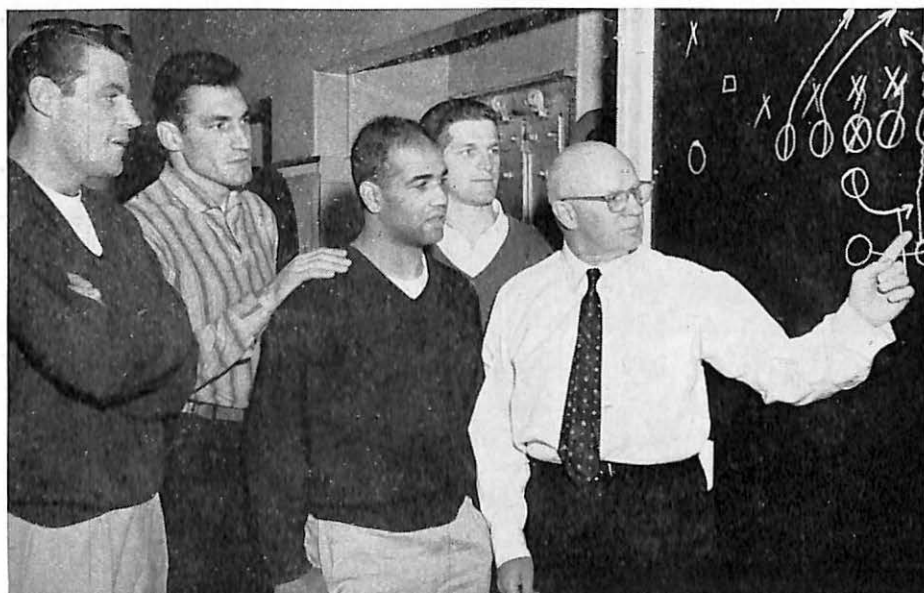
1953—Harry Jagade, FB, Cleveland Browns.
 1954—Frank Gifford, HB, New York Giants.
 1955—Ed Brown, QB, Chicago Bears.
 1956—Darrell Brewster, E, Cleveland Browns.

BEARS IN TRAINING

The 1957 Chicago Bears launched the club's thirty-eighth season on July 27, when the training season was opened at St. Joseph's College at Rensselaer, Ind. This marked the 14th straight summer that the Bears have used the excellent training facilities at St. Joseph's, which is located some 92 miles southeast of Chicago in one of Indiana's finest farming regions.

Three players were missing from the '56 squad—John Hoffman, Johnny Helwig and John Mellekas. Hoffman and Helwig retired during the winter, while Mellekas entered the service shortly after January. A squad of 57 players reported to Head Coach Paddy Driscoll, including 24 newcomers and three service returnees.

St. Joseph's College, with its three fine practice fields, a modern field house, with up to date locker rooms and a training table, plus excellent housing and the tops in food, has been an ideal training site for the Bears.



Head coach Paddy Driscoll discussing a play via blackboard with four of his offensive players, left to right, Ed Brown, Rick Casares, Bobby Watkins and George Blanda.



BEARS IN ALL STAR GAME

The Bears helped inaugurate the annual All Star Football Game and have participated in the Chicago Tribune-sponsored August gridiron classic in Soldier Field more than any other club. They also boast the best record for the series, and have attracted the largest crowds.

1934	Bears 0—All Stars 0	1942	Bears 21—All Stars 0
1935	Bears 5—All Stars 0	1944	Bears 24—All Stars 21
1941	Bears 37—All Stars 13	1947	All Stars 16—Bears 0
Total points. Bears 87—All Stars 50			

CHICAGO BEARS 1956 STATISTICS

TEAM STATISTICS



FORWARD PASSING

*Scoring	363 points	*Average gain	4.6
*First downs	244	Passing percentage	54.0
*Total yards	4,537	Punting average	39.3
*Yards rushing	2,468	Opponents yardage	3,676
Yards passing	2,069	Opponents passing percentage	47.9
*League Leader.			

INDIVIDUAL PERFORMANCES

Forward Passing

	<i>Atts.</i>	<i>Comp.</i>	<i>Yards</i>	<i>Pct.</i>	<i>Ave. Gain</i>	<i>T.D. Passes</i>
George Blanda	69	37	439	53.6	6.36	7
*Ed Brown	168	96	1667	*57.1	*9.92	11



PASS RECEIVING

Pass Receiving

	<i>No. Rec.</i>	<i>Yards</i>	<i>Ave. Gain</i>	<i>Long Gain</i>	<i>T.D.'s.</i>
Harlon Hill	47	1128	*24.0	*79	11
Bill McColl	24	322	13.4	69	4
Rick Casares	23	203	8.8	33	2
Gene Schroeder	20	315	15.8	32	1
John Hoffman	7	85	12.1	35	0
Perry Jeter	5	52	10.4	23	0
Jim Dooley	4	47	11.8	15	0



SCORING

Scoring

	<i>T.D. Run</i>	<i>T.D. Pass</i>	<i>Total T.D.'s</i>	<i>Extra Pts.</i>	<i>Field Goals</i>	<i>Total Points</i>
Rick Casares	*12	2	*14	0	0	84
George Blanda	0	0	0	*45	12	81
Harlon Hill	0	11	11	0	0	66
J. C. Caroline	4	0	4	0	0	24
Bill McColl	0	4	4	0	0	24
Perry Jeter	3	0	3	0	0	18

Ball Carrying

	<i>Atts.</i>	<i>Yards Gained</i>	<i>Longest Gain</i>	<i>Ave.</i>
*Rick Casares	*234	*1126	68	4.8
Perry Jeter	60	315	51	5.3
Bobby Watkins	68	276	25	4.1
John Hoffman	56	272	39	4.9
Ed Brown	40	164	31	4.1
J. C. Caroline	34	141	26	4.1



BALL CARRYING

Pass Interceptions

	<i>No.</i>	<i>Yards</i>
Caroline	6	162
Ray Smith	4	90

Punt Returns

	<i>Yards</i>	<i>Ave.</i>
Jeter	66	11.0
Ray Smith	65	10.8

Punting

	<i>No.</i>	<i>Ave.</i>
Brown	42	39.1
Casares	1	51.0

Kickoff Returns

	<i>Yards</i>	<i>Ave.</i>
Bingham	446	26.2
Jeter	105	21.0

NATIONAL FOOTBALL LEAGUE 1957 SCHEDULE

SUNDAY, SEPT. 29

Chicago Bears at Green Bay.....	1:05
Chicago Cards at San Francisco.....	1:35
Detroit at Baltimore.....	2:05
New York at Cleveland.....	2:05
Philadelphia at Los Angeles.....	1:35
Washington at Pittsburgh.....	2:05

SATURDAY, OCT. 5 (NIGHT)

Chicago Bears at Baltimore.....	8:35
Cleveland at Pittsburgh.....	8:05
New York at Philadelphia.....	8:05

SUNDAY, OCT. 6

Detroit at Green Bay.....	1:05
Los Angeles at San Francisco.....	1:35
Washington at Chicago Cards.....	1:05

SUNDAY, OCT. 13

Baltimore vs. Green Bay at Milwaukee.....	1:05
Chicago Cards at Pittsburgh.....	2:05
Los Angeles at Detroit.....	1:35
New York at Washington.....	2:05
Philadelphia at Cleveland.....	2:05
San Francisco at Chicago Bears.....	1:05

SUNDAY, OCT. 20

Baltimore at Detroit.....	1:35
Chicago Cards at Washington.....	2:05
Cleveland at Philadelphia.....	2:05
Los Angeles at Chicago Bears.....	1:05
Pittsburgh at New York.....	2:05
San Francisco vs. Green Bay at Milwaukee.....	1:05

SUNDAY, OCT. 27

Chicago Bears at San Francisco.....	1:35
Cleveland at Chicago Cards.....	1:05
Detroit at Los Angeles.....	1:35
Green Bay at Baltimore.....	2:05
Philadelphia at Pittsburgh.....	2:05
Washington at New York.....	2:05

SUNDAY, NOV. 3

Chicago Bears at Los Angeles.....	1:35
Detroit at San Francisco.....	1:35
New York at Green Bay.....	1:05
Philadelphia at Chicago Cards.....	1:05
Pittsburgh at Baltimore.....	2:05
Washington at Cleveland.....	2:05

SUNDAY, NOV. 10

Baltimore at Washington.....	2:05
Chicago Cards at New York.....	2:05
Detroit at Philadelphia.....	2:05

SUNDAY, DEC. 29

World's Championship Playoff Game in Home City of Western Conference Champion.

Final National Football League Standings

(Season 1956)

EASTERN CONFERENCE

	W.	L.	T.	Pct.	Pts.	Opp. Pts.
New York	8	3	1	.727	264	197
Chicago Cardinals	7	5	0	.583	240	182
Washington	6	6	0	.500	183	225
Cleveland	5	7	0	.417	167	177
Pittsburgh	5	7	0	.417	217	250
Philadelphia	3	8	1	.273	143	215

WESTERN CONFERENCE

	W.	L.	T.	Pct.	Pts.	Opp. Pts.
Chicago Bears	9	2	1	.818	363	246
Detroit	9	3	0	.750	300	188
San Francisco	5	6	1	.455	233	284
Baltimore	5	7	0	.417	270	322
Green Bay	4	8	0	.333	264	342
Los Angeles	4	8	0	.333	291	307

World Championship Professional Football Playoff:

New York 47 — Chicago Bears 7



Try the Big Change!

in 2 all-new Standard Gasolines

NEW GOLD CROWN Super-Premium . . . an entirely new grade of gasoline . . . power-matched to today's mightiest engines. A Big Change that gives the finest knockfree performance you've ever known, banishes power-loss from spark-plug crust and wild ping.

NEW RED CROWN King-Size Regular—with the Big Change to give you smooth, powerful response . . . stepped up to a new octane high for king-size, knockfree power and king-size mileage, too.

You expect more from **STANDARD** and get it!





Driving to the
game? Stop at
Standard before
you start...

You expect more from Standard and get it—courteous, helpful service . . . neat-as-a-pin restrooms . . . tire and battery checks . . . and two great gasolines—GOLD CROWN Super-Premium and RED CROWN King-Size Regular.

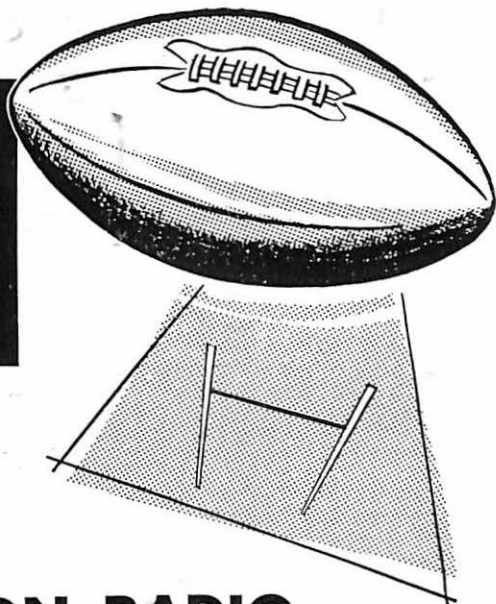


Super PERMALUBE Motor Oil • ATLAS Tires, Batteries and Accessories



You expect more from

or, let Standard
bring the
game to you!



ON RADIO

Over Radio Station WGN, Chicago hear every thrilling play of the Bears' games all season long, reported by Jack Brickhouse, brought to you by Standard.



Quarterback Club on TV

Every Monday night, 7:00 to 7:30 P.M., on WGN-TV—The Chicago Bears' Quarterback Club with Bears' football films and famous guest stars.



and get it!



CHICAGO BEARS

1957

Schedule

AT HOME

*September 20	8:35	Cleveland
October 13	1:05	San Francisco
October 20	1:05	Los Angeles
November 10	1:05	Green Bay
November 17	1:05	Baltimore
December 1	1:05	Washington
December 15	1:05	Detroit

AWAY

September 29	1:05	Green Bay
October 5	8:35	Baltimore
October 27	1:35	San Francisco
November 3	1:35	Los Angeles
November 24	1:35	Detroit
December 8	1:05	Cardinals

*Annual Armed Forces pre-season game.

