

1968

PACKERS **OFFICIAL**
PRESS BOOK

Your first Mustang made life
more delicious, right?

So how about a second helping?

Five all-new models for 1969.
Including luxurious new Grande.
And high-performance Mach I.

Hottest thing going!



Now Mustang fun comes in all flavors. Like it hot? Take off in a Mach 1 with a racy 351 cu. in. V-8 (options up to a 428 Cobra Jet V-8). Insist on cool? Settle back in Grande's hopsack and leather-like elegance. All five new models are lower, roomier, wider, racier! Now at Ford Dealer's—the place you've got to go to see what's going on!

MUSTANG



It's the going thing!



More publications available at:

www.retroseasons.com/library/

INDEX

Page	Tab	Contents	Page	Tab	Contents
1- 5	1.	GENERAL INFORMATION	40-41		NFL Championship Game Records
4		Pro-Bowl and All-Pro Selections	42		AFL-NFL Title Game Records
6- 9	2.	CLUB HISTORY	44-49		Packers Individual Records
10	3.	GEN. MANAGER & COACHES	50-52		Packers Team Records
11		Vince Lombardi		7.	SCORES
12-14		Phil Bengtson	52		Packers Vs. Opponents
16-29		Assistant Coaches	53-58		Results By Seasons
30	4.	VETERANS	60		Special Series Results
32-33		Biographies	63		Pre-Season Results
64		Alphabetical Roster, Depth Chart	61	8.	ROOKIES
65	5.	1967 STATISTICS	62		No. 1 Draft Choices 1936-1968
34		Team and Individual Statistics	66-70		1968 College Draft Choices
38-39		Game by Game Offensive Statistics	71-72	9.	ALL-TIME
		Game by Game Defensive Statistics			All-Time Packers Roster
		NFL Schedule			All-Time Packers Scoring
	6.	RECORDS			
		Western Div. Playoff Statistics			

The 1968 Green Bay Packer Press Book is divided into 9 tabbed sections for quick reference. We hope that it will be informative and if you have any suggestions or comments, please send them to us. Written and edited by Chuck Lane, Director of Public Relations, Green Bay Packers.

All photos by Vernon J. Biever

ELEVEN TIMES WORLD CHAMPIONS

The Green Bay Packers lead the NFL in most Championships won with eleven. Green Bay won three by League standing (1929, 1930 and 1931) and eight times (1936, 1939, 1944, 1961, 1962, 1965, 1966 and 1967) since the play-off system was established in 1933.

In addition, the Packers hold both AFL-NFL Professional Football Titles by virtue of their 35-10 victory over the Kansas City Chiefs and their 33-14 victory over the Oakland Raiders.

The Chicago Bears are next with eight NFL Championships, having won twice prior to the play-off system (1921 and 1932) and six times since (1937, 1940, 1941, 1943, 1946 and 1963).

The Giants, Lions and Browns have won 4 titles, the Eagles 3, the Redskins and Colts twice, and Cleveland Rams, Chicago Cards, and Los Angeles Rams once apiece. The Giants have appeared in 13 playoffs and have lost 10. The Bears and Redskins have lost 4 times and the Browns 5 times.

Green Bay's only two losses were in 1938 (Giants 23, Packers 17) in New York; and in 1960 in Philadelphia by a (17-13 margin to the Eagles).

GREEN BAY'S PLAY-OFF RECORD

1929	12 Wins	0 Defeats	1 Tie
1930	10 Wins	3 Defeats	1 Tie
1931	12 Wins	2 Defeats	0 Ties
1936 — Packers	21 — Boston Redskins	6 — At New York	
1938 — Giants	23 — Packers	17 — At New York	
1939 — Packers	27 — Giants	0 — at Milwaukee	
1944 — Packers	14 — Giants	7 — at New York	
1960 — Eagles	17 — Packers	13 — at Philadelphia	
1961 — Packers	37 — Giants	0 — at Green Bay	
1962 — Packers	16 — Giants	7 — at New York	
1965 — Packers	23 — Cleveland	12 — at Green Bay	
1966 — Packers	34 — Dallas	27 — at Dallas	
1967 — Packers	21 — Dallas	17 — at Green Bay	

AFL-NFL TITLE

1967 — Packers	35 — Kansas City	10 — at Los Angeles
1968 — Packers	33 — Oakland	14 — at Miami

THE GREEN BAY PACKERS, INC.

COACHING STAFF

PHIL BENGTSON

Head Coach

DAVE HANNER

Defensive Line

TOM McCORMICK

Offensive Backs

WAYNE ROBINSON

Defensive Secondary

BOB SCHNELKER

Offensive Receivers

RAY WIETecha

Offensive Line

MEDICAL and EQUIPMENT STAFF

DR. JAMES W. NELLEN

Team Physician

DR. E. S. BRUSKY

Team Physician

GERALD "Dad" BRAISHER

Equipment Manager

CARL "Bud" JORGENSEN

Trainer

BOB NOEL

Asst. Equipment Manager

DOMINIC GENTILE

Asst. Trainer

ADMINISTRATIVE PERSONNEL

DOMINIC OLEJNICZAK

President

RICHARD BOURGUIGNON

Vice President

JOHN B. TORINUS

Secretary

FRED N. TROWBRIDGE

Treasurer

ADMINISTRATIVE

VINCENT T. LOMBARDI

General Manager

THOMAS M. MILLER

Asst. to the Gen. Mgr.

ALBERT "Pat" PEPPLER

Director of Player Personnel

COL. O. C. KRUEGER

Dir. of Milwaukee Operations

CHARLES S. LANE

Dir. of Public Relations

MERRILL KNOWLTON

Ticket Director

WILNER BURKE

Halftime Director

ED WOCHENSKE

Program Sales

AL TREML

Film Director, Photographer

GREEN BAY PACKERS ADDRESS:

GREEN BAY: 1265 Lombardi Ave., Green Bay 54305

Phones: Business (414) 494-2351 / Tickets 494-2355

MILWAUKEE: Milwaukee County Stadium, Milwaukee 53246

Phone: (414) 342-2717

STADIUMS: Lambeau Field, Green Bay

Capacity: 50,861

Milwaukee County Stadium, Milwaukee

Capacity: 47,094

The Green Bay Packer Football Team is a community owned non-profit corporation. 4738½ shares of stock are owned by 1698 shareholders — none of whom receive any dividend on their initial investment. The Corporation is governed by 45 directors and a 7 man executive committee. (For the Green Bay Packer story, turn to P. 6.)

It's 1969! The Going Thing is at your Ford Dealer's



1969 Ford XL



'69 Mustang Hardtop



'69 Torino

Whatever your thing, Ford's ready with the model, the power, and all the options you'll need in '69..

The place you've got to go to see what's going on.



PACKER ALL-LEAGUE SELECTIONS

1931 — LaVerne Dilweg, End; Cal Hubbard, Tackle; Mike Michalske, Guard; Johnny Blood, Halfback
 1932 — Cal Hubbard, Tackle; Nate Barrager, Center; Arnie Herber, Halfback
 1933 — Cal Hubbard, Tackle
 1935 — Mike Michalske, Guard
 1936 — Don Hutson, End; Ernie Smith, Tackle; Lon Evans, Guard; Clarke Hinkle, Fullback

1937 — Lon Evans, Guard; Clarke Hinkle, Fullback
 1938 — Don Hutson, End; Russ Letlow, Guard; Clarke Hinkle, Fullback
 1939 — Don Hutson, End
 1940 — Don Hutson, End
 1941 — Don Hutson, End; Cecil Isbell, Halfback; Clarke Hinkle, Fullback
 1942 — Don Hutson, End; Cecil Isbell, Halfback
 (Official selection discontinued in 1943).

PRESS ASSOCIATION ALL-PRO SELECTIONS

1943 — Don Hutson, End (AP, UP & INS); Tony Canadeo, Fullback (AP & INS)
 1944 — Don Hutson, End (AP, UP & INS)
 1945 — Don Hutson, End (AP & UP); Charles Brock, Center (AP, UP & INS); Ted Fritsch, Fullback (UP)
 1946 — Ted Fritsch, Fullback (AP, UP & INS)
 1947 — Larry Craig, End (UP); Tony Canadeo, Fullback (UP)
 1950 — Billy Grimes, Halfback (INS); Clay Tonnemaker, Center (INS)
 1954 — Roger Zatkoff, Linebacker (UP); Bobby Dillon, Halfback (AP)
 1956 — Bobby Dillon, Safety (UP); Billy Howton, End (AP & UP)
 1957 — Billy Howton, End (AP & UP); Jim Ringo, Center (AP); Bobby Dillon, Halfback (AP)
 1958 — Bobby Dillon, Halfback (AP & UP); Jim Ringo, Center (AP)
 1959 — Jim Ringo, Center (AP & UPI)
 1960 — Jim Ringo, Center (AP & UPI); Paul Hornung, Halfback (AP & UPI); Forrest Gregg, Tackle (AP); Henry Jordan, Tackle (AP & UPI); Bill Forester, Linebacker (AP & UPI); Jerry Kramer, Guard (AP)
 1961 — Paul Hornung, Halfback (AP & UPI); Jim Ringo, Center (AP, NEA & UPI); Forrest Gregg, Tackle (UPI); Fred Thurston, Guard (AP, NEA & UPI); Henry Jordan, Tackle (AP, NEA & UPI); Jesse Wittenton, Halfback (AP & UPI); Bill Forester, Linebacker (AP & UPI); Dan Currie, Linebacker (NEA & UPI); Jim Taylor, Fullback (NEA)
 1962 — Ron Kramer, End (AP); Forrest Gregg, Tackle (AP, NEA & UPI); Jerry

Kramer, Guard (AP, NEA & UPI); Fred Thurston, Guard (UPI); Jim Ringo, Center (AP, NEA & UPI); Jim Taylor, Fullback (AP, NEA & UPI); Willie Davis, End (AP); Henry Jordan, Tackle (AP, NEA & UPI); Henry Jordan, Tackle (AP, NEA & UPI); Bill Forester, Linebacker (UPI); Herb Adderley, Halfback (AP & UPI)
 1963 — Forrest Gregg, Tackle (AP, NEA & UPI); Jerry Kramer, Guard (AP, NEA & UPI); Jim Ringo, Center (AP, NEA & UPI); Henry Jordan, Tackle (AP, NEA & UPI); Bill Forester, Linebacker (UPI); Herb Adderley, Halfback (AP); Willie Wood, Halfback (NEA)
 1964 — Ray Nitschke, Linebacker (AP & UPI); Willie Davis, End (AP, NEA & UPI); Forrest Gregg, Tackle (AP, NEA & UPI); Henry Jordan, Tackle (AP & UPI); Willie Wood, Halfback (AP, NEA & UPI)
 1965 — Forrest Gregg, Guard & Tackle (AP & UPI); Willie Davis, End (AP, NEA & UPI); Ray Nitschke, Linebacker (UPI); Herb Adderley, Halfback (AP, NEA & UPI); Willie Wood, Halfback (AP, NEA & UPI)
 1966 — Forrest Gregg, Tackle (AP, NEA, UPI); Jerry Kramer, Guard (AP, UPI); Bart Starr, Quarterback (AP, NEA, UPI); Willie Davis, End (AP, NEA, UPI); Ray Nitschke, Linebacker (AP, NEA, UPI); Lee Roy Caffey, Linebacker (AP, UPI); Herb Adderley, Halfback (AP, NEA, UPI); Willie Wood, Halfback (AP, NEA, UPI)
 1967 — Forrest Gregg (AP & UPI), Jerry Kramer (AP & UPI) Willie Davis (AP, UPI & NEA) Dave Robinson (AP, UPI & NEA) Bob Jeter (AP, UPI & NEA), Willie Wood (AP & UPI).

PRO-BOWL PARTICIPANTS

Ends — Willie Davis, 1964-68; Bill Howton, 1953, 56, 58; Ron Kramer, 1963; John Martinkovic, 1954, 56; Max McGee, 1962; Abner Wimblerly, 1953; Boyd Dowler, 1966 & 1968.
Tackles — Forrest Gregg, 1961-65, 67-68; Dave Hanner, 1954-55; Henry Jordan, 1961-62, 64-67; Bob Skoronski, 1967; Richard Wildung, 1952; Roger Zatkoff, 1955-57.
Guards — Bill Forester, 1960-63; Jerry Kramer, 1963-64, 68; Darel Teteak, 1953.
Linebackers — Lee Roy Caffey, 1966, Dan Currie, 1961; Ray Nitschke, 1965; Dave

Robinson, 1967-68; Clayton Tonnemaker, 1954.
Centers — William Neal, 1951; James Ringo, 1958-64.
Quarterbacks — Tobin Rote, 1957; Bart Starr, 1961-63, 67.
Halfbacks — Herb Adderley, 1964-68; Bob Dillon, 1956-59, Bill Grimes, 1951-52; Paul Hornung, 1960-61; Emlen Tunnell, 1960; Jess Whittenton, 1962-64; Willie Wood, 1963, 65-68.
Fullbacks — Howard Ferguson, 1956; Tom Moore, 1963; Jim Taylor, 1961-63, 64-65.



First Row — 89 Dave Robinson, 22 Elijah Pitts, 82 Lionel Aldridge, 43 Doug Hart, 21 Bob Jeter, 76 Bob Skoronski, 87 Willie Davis, 26 Herb Adderley; 24 Willie Wood, 81 Marv Fleming.

Second Row — Bud Jorgenson, Trainer; 40 Tom Brown, 66 Ray Nitschke, 12 Zeke Bratkowski, 84 Carol Dale, 15 Bart Starr, 77 Ron Kostelnik, 74 Henry Jordan, 34 Don Chandler, 13 Don Horn, 45 John Rowser, 80 Bob Long, Dad Braisher, Equipment Mgr.

Third Row — Dominic Gentile, Asst. Trainer; 78 Bob Brown, 57 Ken Bowman, 33 Jim Grabowski, 64 Jerry Kramer, 63 Fuzzy Thurston, 36 Ben Wilson, 68 Gale Gillingham, 50 Bob Hyland, 27 Claudis James, Bob Noel, Asst. Equipment Mgr.

Fourth Row — 44 Donny Anderson, 73 Jim Weatherwax, 56 Tommy Crutcher, 55 Jim Flanigan, 83 Allen Brown, 86 Boyd Dowler, 75 Forrest Gregg, 60 Lee Roy Caffey, 72 Steve Wright, 88 Dick Capp, 23 Travis Williams, 85 Max McGee.

McLEAN MOVES UP— Likeable Ray "Scooter" McLean moves up from an outstanding assistant coach to guide the destiny of the Packers for 1958. McLean resigned in December after a 1-10-1 record, worst in Packer history in his first season as head coach.

FROM SANDLOT TO STADIUM —

Procedures at Packers games have come a long way since the sandlot years of 1919-20 when the Pack was subsisting on the contents of George Calhoun's hat. Then there were no ushers, no majorettes, no band and no public address system — the latter hadn't been invented yet. There weren't even any seats at first, and it didn't cost anything to get in.

When the Packers began their career in 1919 they played on approximately the same site as now abandoned City Stadium, but with a mighty difference. Hagemeister Park, as it was called, was just a big vacant lot with a football gridiron marked on it.

There were no gates because there wasn't any fence. Spectators just dropped off the Walnut street street-car and walked over to the sideline, or drove their own cars and parked about ten yards behind the ropes stretched around the playing field.

If they felt like it they either sat in their automobiles or on top of them, but most preferred to get out and follow the play up and down the field. By moving as the play progressed you always had a "50-yard line" location and were handy to any donnybrook that might require a little help. In fact, when things got exciting the crowd sometimes spilled right onto the field, surrounded the scrimmage in a big circle and virtually took part

in every play. Teams didn't huddle in those days, or the fans would have been in that too.

When the half ended teams grabbed blankets and adjourned to opposite end zones where they relaxed and talked over the tactics for the next half. Nothing private about those huddles. The crowd formed a ring around the players, a practice encouraged since it made a handy wind break. Fans weren't bashful about joining the discussions either, sometimes with surprising results. At least one early game was pulled out of the fire by a spectators' halftime suggestion.

In 1920 a section of stands was built — just a small bleacher with a capacity of a couple hundred — on one side of the field, and a fee charged to sit there. The next year a portable canvas fence was erected around the whole field and a regular admission charge inaugurated.

When Hagemeister Park was dug up in 1923 to make way for East High School, the Packers shifted to the new baseball grounds out on the end of Main Street. This was called Bellevue Park because it was just east of the old Hagemeister Brewery, which was renamed the Bellevue Products Co. during Prohibition. Things were Big Time out there, with crowds of 4,000 to 5,000 storming the fences to boo the hated Chicago Bears.

The Packers used Bellevue in 1923-24, but it was obviously inadequate and too far out, lacking about every facility needed for football. Agitation to build a new stadium somewhere near the original site culminated in the erection of old City Stadium just back of the new high school.

The new plant was barely completed in time for the 1925 opening, but was an immediate success, the Bear game that year drawing a record crowd of nearly 6,000. It was a typical small town park of its day, with wooden fences and stands on both sides between the 30-yard lines. A wooden railing surrounded the rest of the gridiron, along which the Knothole Gang stood or sat on the ground.

Seating capacity was gradually increased until it seated 15,000 by 1934, with the end zones still uncovered. With the filling in of the area around the end lines the ultimate capacity of 25,000 was reached.

One of the first tasks of the stadium builders was the creation of a good playing field, a job admirably done. Whatever antiquated City Stadium may have lacked, one of the best turfs in the country wasn't one of them.

After World War II City Stadium gradually faded from its once proud position as one of the favored fields in the National Football League to an inadequate and obsolete installation. As pro crowds increased it was impossible to expand the stadium any further. With limited capacity, the Packers found it increasingly difficult to schedule top opponents at home.

September 29, 1957 was a proud day for Green Bay and its Packers. A million dollar modern stadium with a seating capacity of 32,150 was dedicated. In 1961 the Stadium was expanded to 38,669, to 42,327 in 1963 and to its present 50,861 in 1965 when the name was changed to Lambeau Field.

There has never been an empty seat for a League game in Green Bay

since 1959 when Vince Lombardi revived Packer football.

THE LOMBARDI ERA

In 1959, the Packers announced the signing of New York Giant assistant Vince Lombardi as Head Coach and General Manager of a team that finished dead last in 1958 with a 1-10-1 mark.

In his first season, Lombardi lifted the Packers to a 7-5 record and was unanimously voted Coach of the Year.

Then in 1960, the Packers captured the Western Division Title and went on to win World Championships in 1961, 1962, 1965, 1966 and 1967. Never finishing lower than second since 1960, his teams have become the standard of football excellence and the Packer franchise has become one of the most successful in the National Football League.

In 1967, Green Bay played to 22 consecutive sellouts in 23 games and became the first team in the history of the League to win three straight World Titles.

Over a nine year span as Head Coach, Lombardi's teams racked up 141 victories against 39 losses and 4 ties for a remarkable .783 winning percentage. Even more noteworthy, however, is the record of Lombardi coached teams in post-season play. In 10 Division playoffs and World Championship Games, the Packers emerged victorious nine times.

Following the third consecutive Title in 1967, Lombardi turned over the Head Coaching duties to Phil Bengtson and announced that he would remain as General Manager of the Packers.

VINCE LOMBARDI

GENERAL MANAGER

Vince Lombardi played his collegiate football at Fordham University where he was one of the famed "Seven Blocks of Granite." After earning his Law Degree from Fordham, he coached and taught Chemistry, Latin and Physics at St. Cecelia High School in Englewood, New Jersey.

Then in 1946 he became the line coach at Fordham University where he served until 1948 when he was named assistant to Earl "Red" Blaik at West Point.

Lombardi left the U.S. Military Academy in 1954 to join the New York Giants under Jim Lee Howell as offensive line coach. In four years with the Giants, they won two Eastern Division Titles and one World Title.

In 1959, Lombardi came to Green Bay as Head Coach and General Manager and dramatically altered the football fortunes of the Packers. He brought the Packers from a 1-10-1 record to contention his first season and from 1960 on, the Packers never finished below second as they captured 6 Western Division and 5 World Championships, including an unprecedented three in a row from 1965-1967 and the first two AFL-NFL World Championships in 1966 and 1967. Overall his record was 141-39-4 for a .783 winning percentage.

In addition to serving as General Manager of the Packers, Vince Lombardi also serves, holds, or held the following awards and positions: Chairman of the Board, Public Facilities Corp. of Madison, Wis., Fordham University's highest award—the Insignis Medal; The Senator Brien McMahon Award; Director of the Peoples Trust and Savings Bank of Green Bay; serves on the Council for Human Relations in the City of Green Bay; Trustee of Fordham University; Citizens Committee of St. Norbert's College; President of the State Mental Health Association; Chairman of the State Cancer Fund; Director of Pop Warner Football; Co-Chairman on Gov. Knowles' Council on Physical Fitness; Director of the World Festival in Milwaukee; Special Events Coordinator of The City of Hope, and has served as June Dairy Month Chairman.



9 YEARS OF FOOTBALL UNDER VINCE LOMBARDI

	1959	1960	1961	1962	1963	1964	1965	1966	1967
Games	12	12	14	14	14	14	14	14	14
Total first downs	212	237	274	281	258	250	201	231	243
By rushing	109	135	142	145	114	133	85	98	115
By passing	87	86	115	120	126	106	103	115	112
By penalty	16	16	17	16	18	11	13	18	16
Total net yards	3739	4025	4714	4791	4781	4381	3601	4275	4279
Net yards rushing	1907	2150	2350	2460	2248	2276	1488	1673	1915
Net yards passing	1832	1875	2364	2331	2533	2105	2113	2602	2364
Passes attempted	268	279	306	311	345	321	306	318	334
Passes completed	128	137	177	187	179	186	166	193	182
Total rushing plays	421	463	474	518	504	495	432	473	474
Total first downs	215	199	245	191	193	197	240	211	183
By rushing	101	74	110	88	92	95	115	90	98
By passing	102	110	117	94	87	91	111	106	78
By penalty	12	15	18	9	14	11	14	15	7
Total net yards	3552	3442	4051	3277	3599	3179	3969	3603	3300
Net yards rushing	1770	1285	1694	1531	1586	1532	1988	1644	1923
Net yards passing	1782	2157	2357	1746	2013	1647	1981	1959	1377
Passes attempted	329	365	414	355	378	318	383	390	337
Passes completed	169	192	218	187	180	173	187	202	155
Passes had intercepted	14	12	29	31	22	16	27	28	26
Total rushing plays	430	350	412	404	428	417	480	446	443

RESULTS

Year	Pre-Season	League	Post-Season	League Finish	Year	Pre-Season	League	Post-Season	League Finish
1959	4-2-0	7-5-0	0-0-0	Third in West	1964	3-2-0	8-5-1	0-1-0	Second in West
1960	6-0-0	8-4-0	0-1-0	W. Division Champ	1965	4-1-0	10-3-1	2-0-0	NFL Championship
1961	5-0-11	11-3-0	1-0-0	NFL Championship	1966	3-2-0	12-2-0	2-0-0	NFL & World Champ
1962	6-0-13	1-1-0	1-0-0	NFL Championship	1967	6-0-0	9-4-1	3-0-0	NFL & World Champ
1963	5-1-0	11-2-1	1-0-0	Second in West	TOTALS	42-8-0	89-29-4	10-2-0	
Pre-Season	W 42	L 8	T 0	Pct. .840	5 NFL Championships				
League	89	29	4	.730	2 AFL-NFL Championships				
Post-Season	10	2	0	.833	1 Western Division Championship				
9 YEAR TOTALS	141	39	4	.783	Never Finished Below Third				

JOHN PHIL "PHIL" BENGTON

HEAD COACH

In Phil Bengtson's nine years as an assistant coach with Green Bay, the Packer defense has never finished lower than third in comparative League standings. Success and winning have been ways of life for Phil Bengtson through 33 years of assistant coaching and from his acceptance remarks, there will be no change in the future: "I see no reason why we can not continue winning. Four (Titles) in a row is my ambition. I will consider nothing else successful."

Born July 17, 1913 in Rosseau, Minnesota, Bengtson moved to Crookston and later to Saint Paul where his father was Superintendent of schools. After attending University High School in Minneapolis, Bengtson enrolled at the University of Minnesota in 1931, where he played football under Bernie Bierman. In 1934 Bengtson was named All-American at Tackle and was selected to play in the East-West Shrine Game and the College All-Star game at Chicago.

Foregoing offers to play professional football, Bengtson accepted an assistant coaching position at the University of Missouri under Don Faurot in 1935. Faced with rebuilding a Tiger team that had not won a game in three years, Bengtson was instrumental in helping Missouri capture the Big Eight Title in 1939 and taking them to the Orange Bowl.

In 1940, Bengtson moved to Stanford University under Clark Shaughnessey, where in the first year their "cinderella T-formation team" won the Pacific Coast Title and the Rose Bowl, defeating the University of Nebraska.

With the coming of WW II, Bengtson coached the Iowa Pre-Flight service football team before becoming a gunnery officer aboard the USS Midway with the rank of Lt. Commander.

Following the War, Bengtson returned to Stanford in 1946 where he remained for five more years before Buck Shaw persuaded him to enter pro football as an assistant coach with the San Francisco 49ers. In eight seasons with the 49'ers, Phil served under three head coaches: Buck Shaw, Red Strader and Frank Albert.

When Vince Lombardi was named Head Coach and General Manager at Green Bay, he summoned Bengtson to shore up what had been the League's most charitable defense. In nine years, that defensive unit has never finished below third in comparative League ratings, while ranking first in fewest points allowed three times (1962, 1965 ad 1966). His 1960, 1961, 1963 and 1964 teams allowed the second fewest points while the 1967 World Champions led the League in total defense.

Assuming the head coaching position Feb. 1, 1968, Bengtson becomes the seventh coach in the 49 year history of the Green Bay Packers. As Head Coach, he has accepted the hottest seat in professional football, following Vince Lombardi, the most successful coach in the game. But knowing Bengtson and his record of success, there will be no change in the quality of Green Bay Packer football. 1968 will be a year of challenge for the Coach, the Players and the team. A record fourth consecutive Title is at stake.





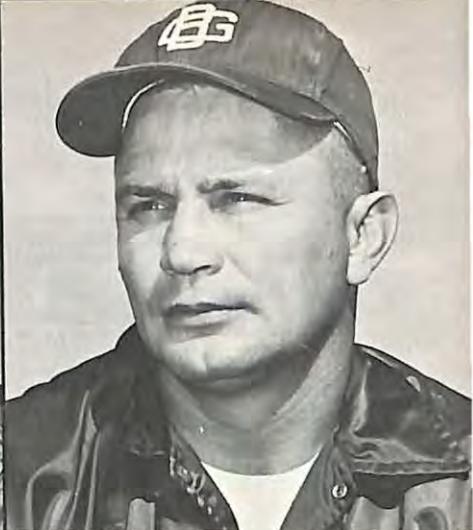
DAVE HANNER
ASSISTANT COACH —
DEFENSIVE LINE

After playing for the Green Bay Packers for 13 seasons, Dave Hanner switched to the coaching ranks in 1965 working with the Packers' Front Four.

As a player, Dave was named All-Pro five times and was twice selected to play on the West Pro Bowl Team.

A native of Parkin, Arkansas, Hanner played his collegiate football at the University of Arkansas where he was twice named to the All-Southwest Conference Team.

The Green Bay Packers drafted Hanner in the fifth round in 1952 and he played on the Western Divisional Title Team of 1960 as well as the World Champion Teams of 1961 and 1962. Between seasons as an active player, Dave worked as a soil conservationist in West Memphis, Arkansas, before moving to Green Bay in 1964.



TOM McCORMICK
ASSISTANT COACH —
OFFENSIVE BACKS

The man in charge of the talented Green Bay Packer backfield is Tom McCormick.

A native of Waco, Texas, Tom attended the College of the Pacific where he was a seventh round future choice of the Los Angeles Rams in 1951.

Tom played both offensive and defensive halfback for the Rams from 1952 to 1956 when he was traded to the New York Giants. After one year with the Giants, McCormick was traded to San Francisco in 1957.

After retiring from active service in 1957, Tom coached high school football at Trace and El Camino High Schools in California and worked as a part time backfield coach with the Minnesota Vikings in 1961 and 1962. In 1963, McCormick joined the Vikings staff on a full time basis working with the offensive backfield, where he served through the 1966 season.



WAYNE ROBINSON
ASSISTANT COACH —
DEFENSIVE SECONDARY

The man in charge of the Packers' multi-talented secondary is Wayne Robinson.

Robinson was born January 14, 1930 in Minneapolis, Minn., and attended North High before enrolling at the University of Minnesota. Collegiately, Robinson played center and linebacker for three years and was the captain of the 1951 Gopher team.

Following his senior year, he was named to the All-Western Conference and All-Midwest Teams and was selected as captain of the East Shrine Team.

Drafted by Philadelphia, Robinson played both center and linebacker for five seasons (1952-56) with the Eagles before becoming an assistant coach with the Winnipeg Blue Bombers under Bud Grant, now of the Minnesota Vikings. Wayne was named All-Pro with the Eagles in 1955 and 1956 and recently was selected on the All Time Eagle team.

In 1959, Robinson was named Head Coach of the British Columbia Lions, also of the Canadian League, where he served for two years.

After spending 1961-1963 away from football, Robinson returned to the coaching ranks under Jerry Burns at Iowa from 1964 until 1966 when he joined the Houston Oilers of the AFL. For the past two years, Robinson has coached the Houston Linebackers under head coach Wally Lemm.



BOB SCHNELKER
ASSISTANT COACH — RECEIVERS

The Green Bay Packers' air attack is coached by Bob Schnellker, a nine year veteran as a player in the National Football League.

Bob played his collegiate football at Bowling Green University and was a 17th round draft choice of the Cleveland Browns in 1953.

He played with the New York Giants at tight end from 1954 to 1962 and finished his career in 1962 with Pittsburgh and Minnesota.

In 1963 he coached the Ram receivers and in February joined Coach Lombardi under whom he had played at New York from 1954 to 1958.

As a player, Bob was a two time performer in the Pro Bowl, enjoying his finest season in 1959 when New York won the first of two consecutive Eastern Conference Crowns and five in a period of six years.



RAY WIETCHA
ASSISTANT COACH —
OFFENSIVE LINE

Ten year New York Giant veteran Ray Wietcha is in charge of the Packers' offensive line.

As an active player with the Giants, Ray played in 133 consecutive games and was rated one of the best blockers in the NFL. He was named to the All-Pro Team five times and played on 4 Eastern Conference Pro Bowl Teams. In 1963 he joined the Los Angeles Rams as offensive line coach, where he served for two years before coming to Green Bay.

Collegiately, Ray was an All-Big Ten center at Northwestern University where he was an 11th round future draft choice of the New York Giants in 1953. After graduation he had a brief baseball tryout before returning to football.



PAT PEPLER
PLAYER PERSONNEL

A large portion of credit for the discovery and development of Packer youth goes to Personnel Director Pat Pepler, who is in charge of all scouting and player selection in the college draft.

Every year, Pepler sifts through the prospective pro prospects from the collegiate and minor football leagues and evaluates candidates for try-outs with the Packers.

A three sport star at Shorewood (Wisc) high school, Pepler attended Michigan State University where he lettered in baseball and basketball.

After graduating in 1948, Pepler played pro baseball briefly before beginning a successful career coaching in the East Lansing area. He coached state championship teams in football before taking a position as assistant coach at North Carolina for 8 years, working with centers and linebackers. In 1962 he switched to Wake Forest and in 1963 came to Green Bay, replacing Dick Voris as Director of Player Personnel.

The 1968 Green Bay Packers Press Book is published by Tom Johnson Promotion Services of Milwaukee for distribution by Wisconsin and Upper Michigan Ford Dealers.

'69 Ford joins the upper classes

1. Hugs the road with as wide a track as Cadillac.
2. Smooths your ride with a longer wheelbase than Chevrolet.
3. Has more driver headroom than a Chrysler Imperial.
4. Designed to ride quieter than the Ford that was quieter than a Rolls-Royce.
5. Easy to handle, easy to park . . . it turns in an even smaller circle than last year's Ford.
6. Biggest, quietest Ford ever built. A great road car.

Take our word for it . . . or take a test ride in a '69 Ford.



'69 Ford
LTD

**It's the Going Thing.
At Ford Dealers**



1968 PACKERS ROSTER

HERB ADDERLEY — 26

Defensive Halfback — Michigan State

Height 6-1, Weight 200

Born in Philadelphia June 8, 1939

Eighth year in pro ball . . . Packers first draft choice for 1961 season . . . Starting halfback for Spartans and tri-captain . . . All-Big Ten . . . Played in East-West Shrine, Hula Bowl, All-American, and All-Star games . . . Physical Education Major . . . Runs hundred in 9.8 . . . Selected AP and UPI All-Pro in 1962, AP in 1963, AP, NEA, and UPI in 1965 and 1966 . . . Returned 3 interceptions for TDs in 1965 . . . Set League record of career TDs on interceptions with 6 . . . Pro-Bowl Participant 1964-1968 . . . Sporting News All-Pro 1967. Residence: Philadelphia.

KICKOFF RETURNS

Year	KICKOFF RETURNS					INTERCEPTIONS		
	No.	Yds.	Ave.	Long.	Tds.	No.	Yds.	Tds.
1961	18	478	26.6	61	0	1	9	0
1962	15	418	27.9	103	1	7	132	1
1963	20	597	29.9	98	1	5	86	0
1964	19	508	26.7	43	0	4	56	0
1965	10	221	22.1	33	0	6	175	3
1966	14	321	22.9	65	0	4	125	1
1967	10	207	20.7	37	0	4	16	1
Totals:	106	2750	25.9	103	2	31	619	6

LIONEL ALDRIDGE — 82

Defensive End — Utah State

Height 6-4, Weight 245

Born in Evergreen, La., Feb. 14, 1941

Sixth year in pro ball . . . Fifth year starter with Packers at right defensive end . . . Fourth round choice for 1963 . . . All-Skyline Conference tackle and Co-Captain of Utah State . . . Played in East-West Shrine, Hula, Gotham and All-American Bowl games . . . Sociology Major . . . Tied for club lead in fumble recoveries in 1966 . . . Works for WTMJ radio and TV in Milwaukee during off-season . . . Sporting News All Pro 1964. Residence: Milwaukee. Missed 3 pre-season and 2 league games in 1967 with broken leg. Started every game after being out only 5 weeks.

DONNY ANDERSON — 44

Halfback — Texas Tech

Height 6-3, Weight 220

Born in Borger, Texas, May 16, 1943

Third year in pro ball . . . Drafted first as future in 1964 . . . Consensus All American for two years . . . Sporting News Co-Player of the Year 1965 . . . In 30 games rushed 526 times for 2280 yds., caught 105 passes for 1327 yds., and 12 TDs, punted 149 times for 38.2 yd. ave., returned 56 kickoffs for 1309 yds., scored 28 TDs for career total of 168 points . . . All-SWC three years . . . SWC Back of the Year 1964 and 1965 . . . Outstanding player of 1965 Gator and Hula Bowl games . . . Physical Education Major . . . Used mainly on kickoff and punt return teams in 1966 . . . Broke into starting lineup midway through 1967 season . . . Scored 4 TDs in first starting assignment against Cleveland in 1967. Residence: Stinnett, Texas.

RUSHING

Year	RUSHING					RECEIVING				
	Atts.	Yds.	Long.	Ave.	Tds.	No.	Yds.	Long.	Ave.	Tds.
1966	24	104	15	4.3	2	2	33	22	16.5	0
1967	97	402	40	4.1	6	22	331	31	15.0	3

KICKOFF RETURNS

Year	KICKOFF RETURNS					PUNT RETURNS				
	No.	Yds.	Long.	Ave.	Tds.	No.	Yds.	Long.	Ave.	Tds.
1966	23	533	61	23.2	0	6	124	77	20.7	1
1967	11	226	30	20.6	0	9	98	43	10.8	0





KEN BOWMAN — 57

Center — Wisconsin
Height 6-2, Weight 235
Born in Milan, Ill., Dec. 15, 1942

Fifth year in pro ball . . . Packers eighth round draft choice for 1964 season . . . Won starting position rookie year . . . Injured shoulder in 1966 pre-season schedule but played most of game against Kansas City in World Title Game . . . Returned to starting lineup in 1967 . . . Sociology Major . . . attends Univ. of Wisconsin law school during off-season. Residence: DePere, Wis.



EDMUND RAYMOND "ZEKE" BRATKOWSKI — 12

Quarterback — Georgia
Height 6-3, Weight 200
Born in Danville, Ill., Oct 20, 1931

Thirteenth year in pro ball . . . Fourth with Packers . . . Real Estate Insurance Major . . . Chicago Bears number two draft choice in 1953 . . . In rookie campaign completed 67 of 130 passes for 1,087 yds. and 8 TDs and punted 39 times for a 41 yard ave. . . . Spent 1955 and 1956 in Air Force . . . In 5 seasons with Bears he completed 263 of 537 passes for 3,639 yds., 24 TDs and 58 interceptions . . . Quarterbacked Rams in 1961, 1962, and half of '63 season . . . Completed 279 of 530 for 3,551 yds., 20 TDs and 35 interceptions . . . Traded to Packers for last 7 games of 1963 where he backs up Bart Starr . . . Zeke has quarterbacked Packers to victory over Colts twice, Vikings once in 1965; led club to victories over Colts, Bears and Rams in 1966 and victories over Falcons, Lions and 49'ers in 4 games when Starr injured. Residence: Granada Hills, California.

ZEKE BRATKOWSKI'S PASSING RECORD

Years	Atts.	Comp.	Yds.	Ints.	Long.	TDs
1954	130	67	1087	17	71t	8
1955-6	In Service					
1957-60	507	196	2552	41	67t	16
1961-63	530	279	3551	35	84t	20
1963 (7 games)	12	4	96	3	64	1
1964 (7 games)	35	18	258	1	33t	1
1965	48	21	348	4	80t	3
1966	64	36	578	2	74	4
1967	94	53	724	9	86t	5
Totals:	1420	674	9194	112	86t	58



BOB BROWN — 78

Defensive End — Arkansas A.M. & N.
Height 6-7, Weight 265
Born in Bonita, La., Feb. 23, 1940

Third year in pro ball . . . Free agent who played 1964 and 1965 seasons with Wheeling Ironmen of Continental League . . . Played 8 games for Toronto in Canadian League in 1965 . . . Had try-outs with 49'ers in 1964 and '65, lasting until last cuts . . . Started first game against Lions in 1966 for Packers . . . Plays defensive tackle on short yardage and goal line defenses. Missed 1968 pre-season work with broken arm. Residence: Bastrop, La.



TOM BROWN — 40

Strong Side Safety — Maryland

Height 6-1, Weight 200

Born in Reading, Pa., on Dec. 12, 1940

Fifth year in pro football . . . Drafted second by Packers for 1963 but decided to play baseball . . . Started for Washington Senators rookie year at first base but finished season in minors at York, Pa. . . Came to Packers in 1964 . . . Intercepted 1 pass and returned it 30 yds. in 1964 and returned 7 kickoffs for 167 yds. . . intercepted 3 passes for 42 yds. in 1965 . . . 4 interceptions for 21 yds. in 1966, not including game saving theft against Dallas in NFL Title game . . . 1 interception for 51 yards in 1967 not including 1 for 20 yards in Ram playoff game to set up first TD . . . Honorable mention All-American at Maryland and named outstanding area football player by Wash. D.C. Touchdown Club . . . Physical Education Major . . . Broke Maryland record for interceptions with 12 his senior year. Sells insurance during off-season. Residence: Silver Springs, Md.



LEE ROY CAFFEY — 60

Linebacker — Texas A & M

Height 6-3, Weight 250

Born in Thorndale, Texas, June 3, 1941

Sixth year in pro ball . . . Eagles seventh round draft choice for 1963 . . . Traded to Packers with Eagles number one 1964 draft choice for center Jim Ringo and fullback Earl Gros . . . Has started at right linebacker for Packers last 4 seasons . . . Can also play middle linebacker . . . 10.1 speed in the hundred . . . Broke open first Colt game in 1966 with 52 yard pass interception for TD. AP and UPI All-Pro 1966 . . . Rancher during off-season . . . Residence: Thorndale, Texas.

Year	Interceptions	Yds.	Long.	Ave.	TDs
1963	1	87	87t	87.0	1
1964	1	44	44	44.0	0
1965	1	42	42t	42.0	1
1966	3	62	52t	20.7	1
1967	2	28	24	14.0	0
Totals:	8	263	87t	33.0	3



FRED CARR — 53

Linebacker — Univ. of Tex. at El Paso

Height 6-5, Weight 235

Born Aug. 19, 1946 — Phoenix, Ariz.

Packers first #1 draft choice for 1968 . . . Selected in New Orleans place as part of Taylor deal . . . Rated top college prospect for 1968 . . . Runs 40 in 4.6 in gear, 100 in 10.2 . . . Sporting News and NEA All-American at UTEP . . . Played in Sun and Senior Bowl Games . . . Has the potential to play anywhere but will be used by Packers at Linebacker . . . Intercepted Cowboy aerial in first play as a pro. Residence: Phoenix, Ariz.



LEO CARROLL — 67

Defensive End — San Diego State

Born Feb. 16, 1944 — Alhambra, Calif.

Height 6-5, Weight 250

First full year in pro ball . . . Drafted #2 by Atlanta in 1967 but injury in pre-season play sidelined him for season . . . Came

to Packers during 1968 pre-season in trade for Bob Long . . . Had excellent reputation as pass rusher in college . . . Attended Glendale (Calif.) Jr. College before San Diego State . . . Teamed with Packer QB Don Horn on 1966 Small College Champion team . . . Selected to play in East-West, Coaches All-American and College All-Star games in 1967. Residence: Los Angeles, Calif.

LEON CRENSHAW — 70

Defensive Tackle — Tuskegee Inst.

Height 6-6, Weight 275

First year in NFL after spending three years playing minor League football with Rhode Island Indians (1965) and Lowell Giants (66-67) . . . Had tryout with Cowboys (1966) and Packers (1967) and lasted until final cut . . . saw good deal of action in 1968 pre-season when rash of injuries sidelined regulars . . . Distinguished himself and won place on roster with performances against Bears and Giants.

CARROLL DALE — 84

Flanker — Virginia Tech

Height 6-2, Weight 200

Born in Wise, Va., on April 24, 1938

Ninth year in pro ball . . . Drafted in eighth round by Rams in 1960 . . . Look All-American team and NEA Player of the Year in Southern Conference in 1959 . . . Education Major . . . Came to Packers from Rams prior to '65 season for linebacker Dan Currie . . . Enjoyed most productive year of career in 1966 with 37 catches for 23.7 yard ave. and 7 TDs . . . Per catch average second highest in League . . . Caught 47 yard TD pass vs. Browns in '65 Title game and 51 yard TD bomb against Dallas in '66 . . . 4 catches for 59 yards against Kansas City and 4 for 43 vs. Oakland in AFL-NFL Title games. Sells insurance during off-season. Residence: Bristol, Tenn.

DALE'S 8 YEAR RECORD

Year	No.	Yds.	Long.	Ave.	TDs
1960	19	336	63	23.0	4
1961	35	561	68t	16.0	2
1962	29	584	80t	20.1	3
1963	34	638	66	18.8	7
1964	32	544	44	17.0	2
1965	20	382	77t	19.1	2
1966	37	876	83t	23.7	7
1967	35	738	86t	21.1	5
Totals:	241	4659	86t	19.7	31

WILLIE DAVIS — 87

Defensive End — Grambling

Height 6-3, Weight 245

Born in Lisbon, La., July 24, 1934

Eleventh year in pro ball . . . Drafted seventeenth by Browns in 1956 then went into service where was named All-Army and All-Service in 1957 . . . Came to Packers in 1959 for end A. D. Williams . . . Captained Grambling Univ. team two years . . . Made Collier's NAIA All-American . . . Industrial Arts Major . . . Named AP All-Pro 1962 and AP, UPI, and NEA All-Pro in 1964, 1965, 1966 and 1967 . . . Has played in last 5 Pro Bowl Games . . . Secured Masters Degree in Business in off-season at University of Chicago . . . Toured Viet Nam for State Department in 1966 . . . Winner of Byron White Award for 1967 . . . 134 consecutive games going into 1968 season . . . Sporting News All-Pro 1968. Part owner of Appleton School Supply, Appleton, and works for WISN-TV, Milwaukee. Residence: Chicago, Ill.





BOYD DOWLER — 86

Flanker — Colorado

Height 6-5, Weight 225

Born in Cheyenne, Wyo., Oct. 18, 1937

Tenth season in pro ball . . . Packers third draft choice in 1959 . . . Big Eight Quarterback . . . Led Bisons in passing, receiving, and interceptions . . . Physical Education Major . . . Averaged 43.3 yds. per punt in 1962 . . . Competed in track running 100 in 9.9 and high hurdles in 14.2 . . . Virtually unanimous choice for Rookie of the Year in 1959 as he led Packers with 32 catches for 549 yards and 4 TDs . . . Called into Army in 1961 and played football weekends . . . Packers leading receiver in 1959, 1961, 1962, 1963, 1964, 1965 and 1967 . . . Caught 16 yard TD pass from Starr against Dallas for only TD of 1966 . . . Caught two TD passes against Dallas in NFL Title Game and 62 yard TD bomb against Oakland in AFL-NFL Title Game in 1968 . . . Packers All-time second leading receiver behind Don Hutson . . . Can play tight end as well as split end and flanker . . . Pro Bowl 1966 and 68 . . . Sporting News All-Pro 1967. Residence: Green Bay, Wisconsin.

DOWLER'S NINE YEAR RECORD

Year	No.	Yds.	Longest	TDs
1959	32	549	35	4
1960	30	451	91t	2
1961	36	663	78t	3
1962	49	724	41	2
1963	53	901	53t	6
1964	45	623	50t	4
1965	44	610	47t	4
1966	29	392	40	0
1967	54	836	57t	4
Totals:	373	5749	91t	29



DAVE DUNAWAY — 29

Flanker — Duke Univ.

Height 6-2, Weight 205

Born in Jacksonville, N. C.

Packers second #2 round selection for 1967 season . . . played in Senior Bowl Game and Coaches All-American Game . . . Played with Packers Taxi squad for part of 1967 season before filling military obligation . . . Runs 100 in 9.7 . . . Caught 43 passes for 614 yds. and 3 TDs in senior year at Duke . . . 4.8 speed in 40 . . . Can also punt . . . Caught 4 passes for 61 yards in 1968 pre-season play . . . History Major.



JIM FLANNIGAN — 55

Linebacker — Pittsburgh

Height 6-3, Weight 240

Born in Pittsburgh, Pa., April 15, 1945

Second year . . . Drafted in Packers regular second round for 1967 season . . . Voted most valuable player at Univ. of Pittsburgh All-East, 1966 . . . Tough and determined tackler . . . UPI all rookie team 1967 . . . Used primarily at middle linebacker, but has speed to play outside . . . College all-star middle linebacker . . . Excels on special teams . . . Political science major in college . . . Missed some duty in 1967 while in Army. Native of West Mifflin, Pennsylvania.

MARV FLEMING — 81**Tight End — Utah****Height 6-5, Weight 240****Born in Longuien, Texas, Jan. 2, 1942**

Sixth year in pro ball . . . Packers eleventh round choice for 1963 . . . Has been clocked at 10.1 in 100 . . . All-Skyline Conference and played in East-West Shrine game . . . Physical Education Major . . . Strong blocker . . . Catches ball in a crowd well . . . Best day of career in 1966 when he caught 5 passes for 41 yards and 1 TD against Vikings in Mpls. . . . Caught 3 for 54 yards against Dallas in 1966 NFL Title game . . . 2 for 22 yds. against Kansas City and 4 for 35 yds. against Oakland in AFL-NFL Title Games . . . Slowed by Achilles injury in 1967. Residence: Compton, California.

FLEMING'S FIVE YEAR RECORD

Year	Number	Yards	Longest	TDs
1963	7	132	33	2
1964	4	36	10	0
1965	14	141	31t	2
1966	31	361	53t	2
1967	10	126	19t	1
Totals:	66	796	53t	7

GALE GILLINGHAM — 68**Offensive Guard — Minnesota****Height 6-3, Weight 255****Born in Madison, Wisc., Feb. 3, 1944**

Third year in pro ball . . . Regular first round choice of Packers for 1966 . . . Played fullback and tackle at Minnesota . . . 5.9 speed in 50 . . . High school discus champion . . . All-State football . . . Played in East-West Shrine game, Senior Bowl, Coaches All-American Game and was selected to play in All-Star game . . . Education Major . . . Started final two games of 1966 season against Colts and Rams and all pre-season and League games in 1967. Residence: Little Falls, Minnesota.

JIM GRABOWSKI — 33**Fullback — Illinois****Height 6-2, Weight 220****Born in Chicago, Ill., Sept. 9, 1944**

First round draft choice from Lions in Ron Kramer trade . . . Third year in pro ball . . . Sporting News Co-Player of the Year in 1965 . . . Consensus All-American at Illinois . . . Finance Major . . . Broke all Red Grange's records at Illinois and 6 Big Ten marks . . . Gained 2878 yards in 3 years . . . Gained more than 125 yards in 6 of ten games senior year and 1258 yards overall . . . Gained 239 yards vs. Wisconsin for career high in 1964 . . . Academic All-American . . . Started in 1967 and despite being sidelined after eighth game with knee injury was still leading Packer ground gainer for 1967 . . . Set club record for most rushing attempts with 32 carries against Bears. Residence: Chicago, Illinois.

GRABOWSKI'S RECORDS

Year	RUSHING				RECEIVING				SCORING	
	Atts.	Yds.	Ave.	Long.	TDs Caught	Yds.	Long.	TDs	Total Pts.	
1966	29	127	4.4	36	1	4	13	7	0	6
1967	120	466	3.9	24	2	12	171	53	1	18
Totals:	149	593	4.0	36t	3	16	184	53	1	24



FORREST GREGG — 75

Offensive Tackle — Southern Methodist

Height 6-4, Weight 250

Born in Birthright, Texas, Oct. 18, 1933

Twelfth season in pro ball . . . Packers second round draft choice in 1956 . . . Missed 1957 season due to military service . . . Made All-SWC in 1954 and 1955 . . . Physical Education Major . . . Captained Mustangs in 1955 . . . Named All-Pro AP in 1960, UPI in 1961. AP and NEA in 1962 and consensus All-Pro 1963, 1964, 1965, 1966 and 1967 . . . Named All-Pro at guard by AP in '65 and at tackle by UPI and NEA as he played both positions . . . Versatile performer . . . Winner of Best Blocker Award from NFL 1000 Yard Foundation in 1965 . . . Pro-Bowl 1961, 65, 67 and 68 . . . Voted best offensive lineman by NFL players in 1967 . . . Sporting News All-Pro, 1967 . . . Sports Director of radio station. Residence: Gainesville, Texas.



DOUG HART — 43

Defensive Halfback — Arlington State

Height 6-1, Weight 190

Born in Handley, Texas, June 3, 1939

Fifth year in pro ball . . . Signed by St. Louis as free agent for 1963 season . . . Picked up on waivers by Packers during pre-season . . . Played on taxi squad 1963 and made squad in 1964 . . . Started at right corner in 1965 . . . Selected on the All-Texas college team of 1962 . . . Pre-Law student . . . Returned 1 interception for 40 yard TD against Atlanta in 1966 . . . 4 interceptions in 1965 for 29 yds. . . . Scored on fumble recovery and run against Vikings in 1965 . . . Excellent speed. Residence: Green Bay, Wisc.



DICK HIMES — 72

Offensive Tackle — Ohio State

Height 6-4, Weight 245

Born May 25, 1946 — Canton, Ohio

Packers second #3 round choice for 1968 . . . Played offense Senior year only, yet was selected to play in East-West Shrine Game . . . Named to All- Big Ten Team . . . Good drive blocker and excellent on pass protection . . . Plays special teams well.



BOB HYLAND — 50

Tackle-Center — Boston College

Height 6-5, Weight 255

Born in White Plains, N. Y., July 21, 1945

Drafted in First Round for 1967 by Packers in place of Pittsburgh's number one choice . . . Considered best offensive lineman in college football in 1966 . . . Can play all 5 positions in offensive line . . . 10.1 speed in 100 . . . played in Senior Bowl and East West Shrine Game . . . Honor student . . . lettered in baseball and track . . . Put shot over 53 feet . . . Started several games at center in 1967 . . . UPI all-rookie team 1967. Native of White Plains, N. Y.

CLAUDIS JAMES — 27**Flanker — Jackson State****Height 6-2, Weight 190****Born in Columbia, Miss., Nov. 7, 1943**

Second year . . . Drafted in 14th round for 1967 . . . Played quarterback in college . . . Used in early camp as running back . . . 9.8 speed in 100 . . . Great potential . . . Good moves in open field . . . Catches ball well . . . Active for first two games of 1967 season. Native of Columbia, Mississippi.

BOB JETER — 21**Defensive Cornerback — Iowa****Height 6-1, Weight 200****Born in Union, S.C., May 9, 1937**

Sixth season in NFL . . . Business Administration Major . . . Packers second round draft choice in 1960 but decided to play in Canada . . . Sat out 1962 season and joined Packers in 1963 . . . Backed up McGee and Dowler as receiver in 1964 . . . Got starting chance against Browns in 1965 Title game . . . Started every game at right corner in 1966 and 1967 . . . Scored on 46 yard interception against Colts in League opener and on 75 yard interception against Rams in season finale in 1966 . . . Overall, had 5 interceptions for 142 yards and a 28.4 yard average per theft . . . Unanimous All-Pro 1967 . . . Pro Bowl 1967 . . . During off-season works with youth at Pittsburgh Social Center. Residence: Pittsburgh, Pennsylvania.

INTERCEPTION RECORD

Year	No.	Yds.	Ave.	Long.	TD
1966	5	142	28.4	75t	2
1967	8	78	9.8	25	0
Totals:	13	220	19.1	75t	2

HENRY JORDAN — 74**Defensive Tackle — Virginia****Height 6-3, Weight 240****Born in Emporia, Va., Jan. 26, 1935**

Twelfth season in pro ball . . . Browns fifth round draft choice in 1957 . . . Cost the Packers only a fourth round choice in 1959 . . . Won All-Pro honors in 1960, 1961, 1962, 1963 and 1964 . . . Second team All-Pro 1966 . . . Pro Bowl performer in 1961, 1962, 1964 and 1967 . . . Most Valuable Lineman in 1964 Pro Bowl . . . Credited with 4 unassisted tackles of Ram quarterback in W. Div. Playoff in 1967 . . . Captained college football team in 1956 and reached finals in NCAA heavyweight wrestling 1957 . . . Business Administration Major . . . Associated with Mortgage Underwriters, Inc., during off-season . . . Excellent after dinner speaker and master of ceremonies. Residence: Green Bay, Wisconsin.

RON KOSTELNIK — 77**Defensive Tackle — Cincinnati****Height 6-4, Weight 260****Born in Colver, Pa., Jan. 14, 1940**

Eighth year in pro ball . . . Packers second round draft choice for 1961 . . . Physical Education Major . . . Played in North-South game . . . Recovered from shoulder injury in 1963 and won starting position in 1964 . . . Plays defensive left tackle . . . Recovered two fumbles in 1966 . . . Credited with being in on 14 tackles against Dallas in 1966 NFL Title game. During off-season works for Main Line Industrial Supplies . . . Part owner of Valley School Supply, Appleton. Residence: Green Bay, Wisconsin.

**JERRY KRAMER — 64****Offensive Guard — Idaho****Height 6-3, Weight 250****Born in Jordan, Mont., Jan. 23, 1936**

Eleventh year in pro ball . . . Packers fourth round draft choice in 1958 . . . All-Pro in 1960, 1962, 1963, 1966 and 1967 . . . Missed 8 games in 1961 with broken ankle . . . Overcame series of childhood injuries to become excellent football player at Univ. of Idaho . . . Business Administration Major . . . Won bids to East-West and North-South games . . . Named captain of West team . . . Played in 1962, 1963 and 1968 Pro Bowl games . . . Scored 65 points in 1962 on 38 extra points and 9 field goals . . . In 1963 set Packer record of 43 extra points and tied the record of 16 field goals for a season total of 91 points . . . Side lined after first game of 1964 season with intestinal infections . . . 8 operations later wood splinters removed and he returned to starting lineup midway through 1965 season . . . Started all games 1966 . . . Made key block on Starr's game winning QB sneak against Dallas in 1967 NFL title game . . . Voted outstanding blocker award by NATL . . . 1000 Yard Club Foundation in 1968 . . . Co-owner of American Archery Company, Oconto, Wis., and Packer Diving Company in Louisiana. Residence: Green Bay, Wisconsin.

**BILL LUECK — 62****Offensive Guard — Arizona****Born April 7, 1946 — Buckeye, Ariz.****Height 6-3, Weight 235**

Selected by Packers in first round of 1968 draft . . . All Conference W.A.C. . . . Selected to play in All-Star Game against Packers . . . Good quickness . . . Pass blocks well . . . Especially effective pulling . . . Operates family cattle ranch in Arizona during off season . . . Has potential to hit 255 pounds. Residence: Buckeye, Ariz.



Ford has a better idea. It's the Going Thing!



CHUCK MERCEIN — 30

Fullback — Yale

Height 6-2, Weight 220

Born in Milwaukee, Wis., April 9, 1943

Fourth year in pro ball . . . Third round draft choice of New York Giants for 1965 . . . played two years for New York before being claimed on waivers by Packers after eighth game of '67 season . . . gained 56 yards in 14 carries in '67 with Green Bay and scored one TD against Rams in Playoff . . . caught 19 yard pass and carried once for 8 yards in scoring drive against Dallas in NFL Title Game . . . All-East and All-Ivy at Yale . . . History major . . . shotputter in track . . . can place kick. Residence: Scarsdale, New York.



RAY NITSCHKE — 66

Middle Linebacker — Illinois

Height 6-3, Weight 240

Born in Elmwood Park, Ill., Dec. 29, 1936

Eleventh year in pro ball . . . Packers third round draft choice in 1957 . . . Played fullback at Illinois, carrying 79 times for a 6.5 yard ave. . . . Physical Education Major . . . Missed several games in 1961 due to military service . . . Voted MVP of Championship game of 1962 in Yankee Stadium against Giants . . . Broke arm against Lions on Thanksgiving day 1963 . . . AP and UPI All-Pro 1964, UPI All-Pro 1965 and AP, UPI, and NEA All-Pro 1966 . . . 2 interceptions for 44 yards in 1966 . . . 1 interception for 20 yd. TD vs. Lions in 1967 . . . Credited with 9 tackles against Oakland in AFL-NFL Title Game in 1968 . . . Voted most outstanding linebacker for 1967 by NFL players. Residence: Green Bay, Wisconsin.



FRANCIS PEAY — 71

Offensive Tackle — Missouri

Height 6-5, Weight 250

Born in Pittsburgh, Pa., May 23, 1944

Third year in NFL . . . acquired in off-season trade with New York Giants prior to '68 season for Crutcher and Wright . . . number one draft choice of Giants for 1966 . . . hampered by injuries when with Giants . . . attended Cameron Jr. College before attending Univ. of Missouri . . . played both ways in junior year . . . concentrated on offense senior year . . . named All-American senior year and played in Sugar and Senior Bowl games . . . Sociology major. Residence: Pittsburgh, Pennsylvania.

'69 Mustang — longer, wider, roomier, racier.



ELIJAH PITTS — 22

Offensive Halfback — Philander Smith

Height 6-1, Weight 210

Born in Conway, Ark., Feb. 3, 1939

Eighth year in pro ball . . . Packers thirteenth round draft choice in 1960 . . . 9.6 speed in 100 . . . Holds collegiate conference 440 record with 47.1 . . . Gulf Coast Conference scoring record holder . . . Economics Major . . . Fifteenth leading Packer ball carrier all-time . . . Started seventh game of 1966 season . . . Rushed 113 times for 373 yds. and 7 TDs . . . Caught 26 passes for 460 yds. and 3 TDs . . . Leading Packer ball carrier in 1966 NFL Title game with 12 rushes for 66 yards and caught one pass for a 17 yard TD . . . Rushed 11 times for 45 yds. against Chiefs in Super Bowl scoring 2 TDs and caught two passes for 22 yds. . . . Scored 60 points in 14 League games in 1966 . . . 12th leading Packer scorer with 192 career points . . . Missed final six games of 1967 season with torn Achilles tendon . . . Operates Pitts Employment Agency in Milwaukee. Residence: Brown Deer, Wisconsin.

PITTS' SEVEN YEAR RECORD

Year	RUSHING				RECEIVING			SCORING
	Atts.	Yds.	Ave.	TDs	No.	Yds.	TDs	Total Pts.
1961	23	75	3.3	1	1	5	0	6
1962	22	110	5.0	2	3	44	0	12
1963	54	212	3.9	5	9	54	1	36
1964	27	128	4.7	2	6	38	0	12
1965	54	122	2.3	4	11	182	1	30
1966	113	373	3.3	7	26	460	3	60
1967	77	247	3.3	6	15	210	0	36
Totals:	370	1267	3.4	27	81	993	5	192



DAVE ROBINSON — 89

Outside Linebacker — Penn State

Height 6-3, Weight 245

Born in Mt. Holly, N.J., May 3, 1941

Sixth year in pro ball . . . Packers first round draft choice for 1963 . . . Played guard, tackle and end at Penn State . . . Civil Engineering Major . . . Played in Hula Bowl, Gator Bowl, All-American Game and All-Star Game . . . Named to All-American team by AP, UPI, NEA, Look, Time and Post magazines . . . Moved into starting linebacker position after Nitschke's injury in 1963 Thanksgiving game . . . Started in 1964 but knee injury hobbled him . . . Started again in 1965 and 1966 . . . Plays left outside backer . . . Sporting News All-Pro team 1966 . . . Played in 1967 and 1968 Pro Bowl Game . . . Most Valuable lineman in Pro Bowl 1968 . . . 5 interceptions for 60 yards in '66 and recovered fumble to ice Western Division Crown against Baltimore . . . Pressured Dallas QB into throwing interception in NFL Title game in final goal line stand . . . All-Pro AP, UPI and NEA 1967. Residence: Lindenwald, New Jersey.

INTERCEPTIONS

Year:	No.	Yds.	Ave.	Long.	TD
1965	3	141	47.0	87	0
1966	5	60	12.0	23	0
1967	4	16	4.0	12	0
Totals:	12	217	18.1	87	0



JOHN ROWSER — 45

Defensive Back — Michigan

Height 6-1, Weight 185

Born in Detroit, Mich., April 24, 1944

Second year . . . Drafted in third round for 1967 . . . 10.2 speed in 100 . . . 4.6 in 40 . . . Ran track at Michigan . . . Broad-jumped over 25 feet . . . Hard hitter . . . Tough tackler who plays well on special teams . . . Can play either cornerback or safety . . . Native of Detroit, Michigan.



BOB SKORONSKI — 76

Offensive Tackle — Indiana

Height 6-3, Weight 250

Born in Ansonia, Conn., March 5, 1934

Eleventh year in pro ball . . . Drafted fifth by Packers in 1956 . . . Co-Captain of Hoosier team and voted most valuable player by team . . . Marketing Major . . . Played in every game as collegian . . . Regular right tackle as rookie in 1956 . . . Spent 1957 and 1958 seasons in service . . . Moved to left tackle . . . Played center when Ringo traded to Eagles, but moved back to left tackle . . . Voted to Pro-Bowl team for first time in 1967 . . . Offensive captain . . . During off-season works for Josten Jewelry . . . Part owner Valley School Supply, Appleton. Residence: Schofield, Wisconsin.



BART STARR — 15

Quarterback — Alabama

Height 6-1, Weight 200

Born in Montgomery, Ala., Jan. 9, 1934

Thirteenth year in pro ball . . . Drafted by Packers in 17 round in 1956 . . . Broke in under Tobin Rote in 1957 . . . Shared position with Babe Parilli and Lamar McHan in 1958 . . . Started last 4 games in 1959 . . . Regular in 1960 . . . Winningest QB in pro football . . . 57 percent completion average over career . . . Quarterbacked Packers to Western Division Titles in 1960, 1961, 1962, 1965 and 1966 . . . World Titles in 1961, 1962, 1965 and 1966 . . . High School All-American . . . History Major . . . Has completed higher percentage of passes in career than any other NFL player and has lowest percentage interceptions . . . holds NFL record of 294 consecutive passes without an interception . . . NFL Leading passer 1962, 1964 and 1966 . . . Most Valuable Player in NFL 1966 . . . Voted MVP in AFL-NFL Super Bowl 1967 and 1968 . . . Played in Pro-Bowl 1961, 1962, 1963 and 1966 . . . All-Pro AP, UPI, and NEA 1966 . . . Jim Thorpe Award winner 1966 . . . Has gained over 2,000 yards passing 5 of last 7 years . . . Missed 5 games in 1963 with broken hand and 4 in 1967 with shoulder, rib and hand injuries . . . During off-season does sales promotion. Residence: Green Bay, Wisconsin.

BART STARR'S 12 YEAR RECORD

League Contests	Year	Atts.	Comp.	Yards	TDs	Int.	Ave.	Per Cent
	1956	44	24	325	2	3	7.49	54.5
	1957	215	117	1489	3	10	6.93	54.4
	1958	157	78	875	3	12	5.57	49.7
	1959	134	70	972	6	7	7.25	52.2
	1960	172	98	1358	4	8	7.90	57.0
	1961	295	172	2418	16	16	8.19	58.3
	1962	285	178	2438	12	9	8.55	62.5
	1963	244	132	1855	15	10	7.60	54.1
	1964	272	163	2144	15	4	7.88	59.9
	1965	251	140	2055	16	9	8.19	55.8
	1966	251	156	2257	14	3	8.99	62.2
	1967	210	115	1823	9	17	8.68	54.8
Totals:	2530	1443	20009	120	108	8.27	57.0	

NFL Title Games

Year	Comp.	Atts.	Per Cent	Yds.	TDs	Int.
1960	21	35	60.0	178	1	0
1961	10	17	58.8	164	3	0
1962	10	22	45.5	106	0	0
1965	10	19	52.6	147	1	1
1966	19	28	67.9	304	4	0
1967	14	24	58.3	191	2	0
Totals:	84	145	57.9	1090	11	1

AFL-NFL Championship

Year	Comp.	Atts.	Per Cent	Yds.	TDs	Int.
1967	16	23	69.6	250	2	1
1968	13	24	54.2	202	1	0
Totals:	29	47	61.7	452	3	1



PHIL VANDERSEA — 83

Tight End — University of Massachusetts
Height 6-3, Weight 235

Born in Whitinsville, Mass., Feb. 25, 1943

Drafted in 16th round as future in 1964 as fullback . . . All-Yankee Conference 1965 . . . two years football . . . gained 396 yds. in 100 carries and scored 6 TDs senior year . . . Hotel Management major . . . Used on special teams in 1966 before being selected by New Orleans in expansion draft . . . returned to Packers between '67 and '68 seasons as final part of Taylor trade with Saints . . . Can play fullback or linebacker. Residence: Whitinsville, Massachusetts.



JIM WEATHERWAX — 73

Defensive Tackle — Los Angeles State

Height 6-7, Weight 260

Born in Porterville, Calif., Jan. 9, 1943

Third year in pro ball . . . Drafted in eleventh round as a future in 1964 . . . All-Conference both ways and CSCLA's Line-man of the Year . . . Attended West Texas State one year before transferring to L.A. State . . . Lettered in football twice, basketball once . . . Captained college football team . . . Played in Camelia Bowl in 1965 . . . Health Major . . . plays on short yardage and goal line defenses . . . Started first 3 games in 1967 . . . Works for Blair & Co. in off-season. Residence: Green Bay, Wisconsin.



TRAVIS WILLIAMS — 23

Running Back — Arizona State

Height 6-1, Weight 212

Born in Richmond, Calif., Jan. 14, 1946

Second year . . . drafted fourth in 1967 in Redskins place as part of Ron Rector trade in 1966 . . . Junior College 100 yard dash Champion running 100 in 9.3 . . . runs 40 in gear in 4.3 . . . attended Contra Costa Jr. College before entering Arizona State . . . had 4.0 rushing ave. at Arizona State . . . saw first action in 1967 returning kickoffs against Cards in 7th game of season . . . returned 1 for TD vs. Cards, 2 vs. Browns and 1 vs. Rams for 41.1 yard ave. and 4 TDs . . . led team in rushing last two games of season and W. Div. Playoff against Rams . . . 2 TDs rushing against Rams in playoff, one on 46 yard sprint to tie score . . . UPI All-Rookie Team 1967 . . . Works for Pabst Brewing Co. in off-season. Residence: Richmond, California.

Year	RUSHING					RECEIVING				KICKOFF RET.			
	Att.	Yds.	Ave.	Lg.	TD	No.	Yds.	Lg.	TD	No.	Yds.	Lg.	TD
1967	35	188	5.4	37	1	5	80	29	1	18	739	104	4



FRANCIS WINKLER — 58

Defensive End — Memphis State

Height 6-3, Weight 230

Born Oct. 20, 1946 — Memphis, Tenn.

Selected in fifth round for 1968 . . . Impressed Packer coaches from beginning with hustle and attitude . . . Always near the ball on defense . . . Impressed as offensive guard in early camp . . . Business Administration Major. Residence: Memphis, Tenn.



WILLIE WOOD — 24

Defensive Free Safety — Southern California

Height 5-10, Weight 190

Born in Washington, D. C., Dec. 23, 1936

Ninth year in pro ball . . . Wrote to Packers for try out . . . Signed as free agent . . . Quarterback at USC and defensive halfback . . . Sociology Major . . . Surest tackler on squad . . . Led NFL in punt returns in 1961, second in 1962 and 1963 . . . Led NFL in interceptions in 1962 with 9 . . . NEA All-Pro 1963, AP, NEA and UPI All-Pro 1964, 1965, 1966 and 1967 . . . Sporting News All-Pro 1967 . . . Played in 1964, 1965, 1966, 1967 and 1968 Pro Bowl Games . . . Led Packers in punt returns in 1965 and 1967 . . . Broke open Super Bowl game in 1966 with 50 yard pass interception . . . Member of President's Council on Youth Fitness. Residence: Washington, D. C.

WOOD'S EIGHT YEAR RECORD

Year	Ints.	Yds.	Long.	TDs	Punt Ret.	Yds.	Long.	TDs
1960	0	0	0	0	16	106	33	0
1961	5	52	21	0	14	225	72	2
1962	9	132	37	0	23	274	65	0
1963	5	67	22	0	19	169	41	0
1964	3	73	42t	1	19	252	64	0
1965	6	65	28	0	13	38	14	0
1966	3	38	20t	1	22	82	13	0
1967	4	56	21	0	12	3	8	0
Totals:	35	483	42t	2	138	1148	72	2

1968 GREEN BAY PACKER ALPHABETICAL ROSTER

No.	Name	Pos.	Ht.	Wt.	Age	Yr. In NFL	School
26	Adderley, Herb	DHB	6-0	200	29	8	Michigan State
82	Aldridge, Lionel	DE	6-4	245	27	6	Utah State
44	Anderson, Donny	RB	6-3	210	25	3	Texas Tech
57	Bowman, Ken	C	6-3	230	25	5	Wisconsin
12	Bratkowski, Zeke	QB	6-3	210	36	13	Georgia
40	Brown, Tom	DS	6-1	195	27	5	Maryland
60	Caffey, Lee Roy	LB	6-3	250	27	6	Texas A & M
53	Carr, Fred	LB-TE	6-5	238	22	1	UTEP
70	Crenshaw, Leon	DT	6-6	280	24	1	Tuskegee
84	Dale, Carroll	E	6-2	200	30	9	Virginia Tech
87	Davis, Willie	DE	6-3	245	34	11	Grambling
86	Dowler, Boyd	E	6-5	225	31	10	Colorado
29	Dunaway, Dave	FL	6-2	205	23	1	Duke
55	Flanigan, Jim	LB	6-3	240	22	2	Pittsburgh
81	Fleming, Marv	TE	6-4	235	26	6	Utah
68	Gillingham, Gale	G	6-3	255	24	3	Minnesota
33	Grabowski, Jim	RB	6-2	220	24	3	Illinois
75	Gregg, Forrest	T	6-4	250	34	12	SMU
43	Hart, Doug	DHB	6-0	190	29	5	UTA
72	Himes, Dick	OT	6-4	244	22	1	Ohio State
50	Hyland, Bob	C-G	6-5	250	22	2	Boston College
27	James, Claudis	FL	6-2	190	22	2	Jackson State
21	Jeter, Bob	DB	6-1	205	31	6	Iowa
74	Jordan, Henry	DT	6-3	250	33	12	Virginia
77	Kostelnik, Ron	DT	6-4	260	28	8	Cincinnati
64	Kramer, Jerry	G	6-3	245	32	11	Idaho
62	Lueck, Bill	OG	6-3	235	22	1	Arizona
30	Mercein, Chuck	RB	6-2	220	25	4	Yale
66	Nitschke, Ray	LB	6-3	235	31	11	Illinois
71	Peay, Francis	QT	6-5	250	24	3	Missouri
22	Pitts, Elijah	RB	6-1	205	29	8	Philander Smith
89	Robinson, Dave	LB	6-3	240	27	6	Penn State
45	Rowser, John	RB	6-1	180	23	2	Michigan
76	Skoronski, Bob	OT	6-3	245	34	11	Indiana
15	Starr, Bart	QB	6-1	190	34	13	Alabama
83	Vandersea, Phil	TE-LB	6-3	235	25	3	Massachusetts
73	Weatherwax, Jim	DL	6-7	260	25	3	Los Angeles State
23	Williams, Travis	RB	6-1	210	22	2	Arizona State
58	Winkler, Francis	DE	6-3	230	22	1	Memphis State
24	Wood, Willie	DB	5-10	190	31	9	S. California

1968 GREEN BAY PACKER DEPTH CHART

OFFENSE

LE:	81 Fleming, Marv	83 Vandersea, Phil	
LT:	76 Skoronski, Bob	71 Peay, Francis	72 Himes, Dick
LG:	68 Gillingham, Gale	50 Hyland Bob	
C:	57 Bowman, Ken	50 Hyland Bob	
RG:	64 Kramer, Jerry	62 Lueck, Bill	50 Hyland, Bob
RT:	75 Gregg, Forrest	71 Peay, Francis	
RE:	86 Dowler, Boyd	29 Dunaway, Dave	
QB:	15 Starr, Bart	12 Bratkowski, Zeke	
HB:	44 Anderson, Donny	22 Pitts, Elijah	23 Williams, Travis
FB:	33 Grabowski, Jim	30 Mercein, Chuck	
FL:	84 Dale, Carroll	27 James, Claudis	

DEFENSE

LE:	87 Davis, Willie	58 Winkler, Francis	
LT:	77 Kostelnik, Ron	73 Weatherwax, Jim	
RT:	74 Jordan, Henry	70 Crenshaw, Leon	73 Weatherwax, Jim
RE:	82 Aldridge, Lionel	58 Winkler, Francis	73 Weatherwax, Jim
LLB:	89 Robinson, Dave	53 Carr, Fred	
MLB:	66 Nitschke, Ray	55 Flanigan, Jim	60 Caffey, Lee Roy
RLB:	60 Caffey, Lee Roy	53 Carr, Fred	
LC:	26 Adderley, Herb	45 Rowser, John	
RC:	21 Jeter, Bob	45 Rowser, John	
LS:	40 Brown, Tom	43 Hart, Doug	45 Rowser, John
RS:	24 Wood, Willie	43 Hart, Doug	45 Rowser, John

SPECIALISTS

KICKOFFS:	64 Kramer
PUNTERS:	44 Anderson
K. O. RETURNS:	23 Williams — 26 Adderley — 44 Anderson
PUNT RETURNS:	40 Brown, T. — 24 Wood — 22 Pitts — 44 Anderson

**Ford
strikes again!**

Cobra.



'69 Cobra SportsRoof

All-new Cobra! A hot performance car
at a cool low price. Come on in.



**See it in your Ford Dealer's
Performance Corner**



1967

GREEN BAY
PACKERS

STATISTICS

(14 LEAGUE GAMES ONLY)

RESULTS

Packers	Opp.
17 Lions at G.B. (50,861)	17
13 Bears at G.B. (50,861)	10
23 Falcons at Milw. (49,467)	0
27 Lions at Detroit (57,877)	17
7 Vikings at Milw. (49,601)	10
48 Giants at N.Y. (62,585)	21
31 Cardinals at St. L. (49,792)	23
10 Colts at Baltimore (60,238)	13
55 Browns at Milw. (50,074)	7
13 49'ers at G.B. (50,861)	0
17 Bears at Chicago (47,513)	13
30 Vikings at Minn. (47,693)	27
24 Rams at L.A. (76,637)	27
17 Steelers at G.B. (50,861)	24

SCORES BY QUARTERS

	One	Two	Three	Four	Total
G.B.	76	92	53	110	332
Opp.	33	62	20	70	209

TEAM STATISTICS

243 Total First Downs	183
115 First Downs Rushing	98
112 First Downs Passing	78
16 First Downs Penalty	7
4279 Tot. Net Yds. Gained	3300
1915 Net Yds. Rushing	1923
2364 Net Yds. Passing	1377
2758 Gross Yds. Passing	1624
41 Thrown Att. To Pass	29
394 Yds. Lost	267
334 Passes Attempted	337
182 Passes Completed	155
54.5 Completion Average	46.0
15.2 Ave. Gain Per Comp.	10.5
26/284 Int. By/Yards	27/370
66/2409 Punts/Yards	75/3169
39/157 Punts Ret./Yards	13/66
36.5 Punting Average	42.3
48/531 Penalties/Yards	55/482
19/10 Fumbles/Lost	23/14
474 Total Rushing Plays	443
4.1 Ave. Gain Per Rush	4.3
846 Total Off. Plays	807
5.1 Ave. Gain Per Off. Play	4.1

RECEIVING

	No.	Yds.	Ave.	Long.	TD
Dowler	54	836	15.5	57	4
Dale	35	738	21.1	86	5
Anderson	22	331	15.0	31	3
Pitts	15	210	14.0	84	0
Wilson	13	76	5.8	21	0
Grabowski	12	171	14.3	53	1
Fleming	10	126	12.6	19	1
Long	8	96	12.0	21	0
Williams	5	80	16.0	29	1
Brown, A.	3	43	14.3	17	0
McGee	3	33	11.0	13	0
Mercein	1	6	6.0	6	0

RUSHING

	No.	Yds.	Ave.	Long.	TD
Grabowski	120	466	3.9	24	2
Wilson	103	453	4.4	40	2
Anderson	97	402	4.1	40	6
Pitts	77	247	3.3	15	6
Starr	21	90	4.3	23	0
Williams	35	188	5.4	37	1
Mercein	14	56	4.0	15	1
Bratkowski	5	6	1.2	3	0
Dale	1	9	9.0	9	0
Horn	1	-2	-2.0	-2	0

SCORING

	Tdr.	Tdp.	Pat.	FG	Pts.
Chandler	0	0	39	19	96
Anderson	6	3	0	0	54
Pitts	6	0	0	0	36
Williams	5	1	0	0	36
Dale	0	5	0	0	30
Dowler	0	4	0	0	24
Grabowski	2	1	0	0	18
Wilson	2	0	0	0	12
Nitschke	1	0	0	0	6
Fleming	0	1	0	0	6
Adderley	1	0	0	0	6
Mercein	1	0	0	0	6
Davis	0	0	0	0	2

Ford Dealers present: biggest, quietest, most luxurious Ford yet.

PUNT RETURNS

	No.	Yds.	Ave.	Long.	FC	TDs
Wood	12	3	3	8	6	0
Anderson	9	98	10.8	43	3	0
Brown, T.	9	40	4.4	12	1	0
Pitts	9	15	1.7	10	3	0

PUNTING

	No.	Yds.	Ave.	Long.	Blk.
Anderson	65	2378	36.6	63	1
Chandler	1	31	31.0	31	0

INTERCEPTIONS

	No.	Yds.	Ave.	Long.	TD
Jeter	8	78	9.8	25	0
Robinson	4	16	4.0	12	0
Wood	4	56	14.0	21	0
Adderley	4	16	4.0	12	1
Nitschke	3	35	15.0	20	1
Caffey	2	28	14.0	24	0
Brown, T.	1	51	51.0	51	0

FIELD GOALS

	No.	Att.	Blk.	Long.
Chandler	19	26	2	49

KICKOFF RETURNS

	No.	Yds.	Ave.	Long.	TD
Williams	18	739	41.1	104	4
Anderson	11	226	20.6	30	0
Adderley	10	207	20.7	37	0
Crutcher	3	48	12.0	18	0
Brown, A.	1	13	13.0	13	0
Hart	1	8	8.0	8	0
Robinson	1	0	0.0	0	0

PASSING

	Att.	Comp.	Yds.	Pct.	Lg.	Int.	Tds
Starr	210	115	1823	54.8	84	17	9
Brat'ski	94	53	724	56.4	86	9	5
Horn	24	12	171	50.0	29	1	1
An'son	2	1	19	50.0	19	0	0
Pitts	1	1	21	100.0	21	0	0

1967 POST SEASON GAME STATISTICS

W. DIV PLAYOFF
VS. RAMSNFL TITLE
VS. COWBOYSAFL-NFL CHAMPIONSHIP
VS. RAIDERS

PASSING

	Comp.	Att.	Yds.	TD	Comp.	Att.	Yds.	TD	Comp.	Att.	Yds.	TD
Starr	17	23	222	1	14	24	191	2	13	24	202	1

RUSHING

	Att.	Yds.	Long.	TD	Att.	Yds.	Long.	TD	Att.	Yds.	Long.	TD
Anderson	12	52	18	0	18	35	9	0	14	48	8	1
Mercein	12	13	7	1	6	20	8	0	—	—	—	—
Wilson	—	—	—	0	3	11	13	0	17	65	13	0
Williams	18	88	46	2	4	13	7	0	8	36	18	0

RECEIVING

	No.	Yds.	Long.	TD	No.	Yds.	Long.	TD	No.	Yds.	Long.	TD
Anderson	2	30	25	0	4	44	17	0	2	18	12	0
Dale	6	109	48	1	3	44	17	0	4	43	17	0
Dowler	3	35	17	0	4	77	43	2	2	71	62	1
Fleming	3	30	12	0	—	—	—	—	4	35	11	0
McGee	—	—	—	—	—	—	—	—	1	35	35	0
Mercein	2	10	5	0	2	22	19	0	—	—	—	—
Williams	—	—	—	—	1	4	4	0	—	—	—	—
Wilson	—	—	—	—	—	—	—	—	—	—	—	—

PUNTING

	No.	Yds.	Ave.	No.	Yds.	Ave.	No.	Yds.	Ave.
Anderson	5	163	32.6	8	230	28.8	6	234	39.0

INTERCEPTIONS

	No.	Yds.	TD	No.	Yds.	TD	No.	Yds.	TD
T. Brown	1	20	0	—	—	—	—	—	—
Adderley	—	—	—	1	15	0	1	60	0

PUNT RETURNS

	No.	Yds.	Long.	FC	No.	Yds.	Long.	FC	No.	Yds.	Long.	FC
Wood	2	5	5	3	4	21	10	2	3	35	31	0
T. Brown	1	39	39	0	1	—2	—2	0	—	—	—	0

FIELD GOALS

	No.	Att.	Long.	No.	Att.	Long.	No.	Att.	Long.
Chandler	—	—	—	0	1	—	4	4	43

NFL 1968 REGULAR SEASON SCHEDULE

(All times local, Daylight or Standard)

SATURDAY, SEPT. 14 (FIRST WEEK)

1. Atlanta at Minnesota 8:00

SUNDAY, SEPT. 15

2. Cleveland at New Orleans 1:30
 3. Detroit at Dallas 1:30
 4. New York at Pittsburgh 1:30
 5. Philadelphia at Green Bay 1:00
 6. San Francisco at Baltimore 2:00
 7. Washington at Chicago 1:00

MONDAY, SEPT. 16

8. Los Angeles at St. Louis 8:30

SUNDAY, SEPT. 22 (SECOND WEEK)

9. Baltimore at Atlanta 1:30
 10. Chicago at Detroit 1:15
 11. Cleveland at Dallas 1:30
 12. Minnesota vs. Green Bay at Milwaukee 1:00
 13. New York at Philadelphia 1:15
 14. Pittsburgh at Los Angeles 1:00
 15. St. Louis at San Francisco 1:00
 16. Washington at New Orleans 1:30

SUNDAY, SEPT. 29 (THIRD WEEK)

17. Atlanta at San Francisco 1:00
 18. Baltimore at Pittsburgh 1:30
 19. Chicago at Minnesota 1:30
 20. Dallas at Philadelphia 1:15
 21. Detroit at Green Bay 1:00
 22. Los Angeles at Cleveland 1:30
 23. St. Louis at New Orleans 1:30
 24. Washington at New York 1:30

SATURDAY, OCT. 5 (FOURTH WEEK)

25. Pittsburgh at Cleveland 8:30

SUNDAY, OCT. 6

26. Chicago at Baltimore 2:00
 27. Dallas at St. Louis 1:00
 28. Green Bay at Atlanta 1:30
 29. Minnesota at Detroit 1:15
 30. New Orleans at New York 1:30
 31. Philadelphia at Washington 1:30
 32. San Francisco at Los Angeles 1:00

SUNDAY, OCT. 13 (FIFTH WEEK)

33. Baltimore at San Francisco 1:00
 34. Detroit at Chicago 1:00
 35. Los Angeles vs. Green Bay at Milwaukee 1:00
 36. Minnesota at New Orleans 1:30
 37. New York at Atlanta 1:30
 38. Philadelphia at Dallas 1:30
 39. Pittsburgh at Washington 1:30
 40. St. Louis at Cleveland 1:30

SUNDAY, OCT. 20 (SIXTH WEEK)

41. Atlanta at Los Angeles 1:00
 42. Chicago at Philadelphia 1:15
 43. Cleveland at Baltimore 2:00
 44. Dallas at Minnesota 1:30
 45. Green Bay at Detroit 1:15
 46. New Orleans at Pittsburgh 1:30
 47. San Francisco at New York 1:30
 48. Washington at St. Louis 1:00

SUNDAY, OCT. 27 (SEVENTH WEEK)

49. Atlanta at Cleveland 1:30
 50. Los Angeles at Baltimore 2:00
 51. Minnesota at Chicago 1:00
 52. New Orleans at St. Louis 1:00
 53. New York at Washington 1:30
 54. Philadelphia at Pittsburgh 1:30
 55. San Francisco at Detroit 1:15

MONDAY, OCT. 28

56. Green Bay at Dallas 8:30

SUNDAY, NOV. 3 (EIGHTH WEEK)

57. Baltimore at New York 1:30
 58. Chicago at Green Bay 1:00
 59. Cleveland at San Francisco 1:00
 60. Dallas at New Orleans 1:00

61. Detroit at Los Angeles 1:00
 62. Pittsburgh at Atlanta 1:15
 63. St. Louis at Philadelphia 1:15
 64. Washington at Minnesota 1:30

SUNDAY, NOV. 10 (NINTH WEEK)

65. Baltimore at Detroit 1:15
 66. Green Bay at Minnesota 1:30
 67. Los Angeles at Atlanta 1:15
 68. New Orleans at Cleveland 1:30
 69. New York at Dallas 3:00
 70. Pittsburgh at St. Louis 1:00
 71. San Francisco at Chicago 1:00
 72. Washington at Philadelphia 1:15

SUNDAY, NOV. 17 (TENTH WEEK)

73. Atlanta at Chicago 1:00
 74. Cleveland at Pittsburgh 1:15
 75. Dallas at Washington 1:15
 76. Detroit at Minnesota 3:00
 77. Los Angeles at San Francisco 1:00
 78. New Orleans vs. Green Bay at Milwaukee 1:00
 79. Philadelphia at New York 1:30
 80. St. Louis at Baltimore 2:00

SUNDAY, NOV. 24 (ELEVENTH WEEK)

81. Atlanta at St. Louis 1:00
 82. Dallas at Chicago 1:00
 83. Green Bay at Washington 1:15
 84. Minnesota at Baltimore 2:00
 85. New Orleans at Detroit 1:15
 86. New York at Los Angeles 1:00
 87. Philadelphia at Cleveland 1:30
 88. San Francisco at Pittsburgh 1:15

THURSDAY, NOV. 28 (TWELFTH WEEK)

(Thanksgiving)

89. Philadelphia at Detroit 12:15
 90. Washington at Dallas 5:00

SUNDAY, DEC. 1

91. Atlanta at Baltimore 2:00
 92. Chicago at New Orleans 1:00
 93. Green Bay at San Francisco 1:00
 94. Los Angeles at Minnesota 1:30
 95. New York at Cleveland 1:30
 96. St. Louis at Pittsburgh 1:15

SATURDAY, DEC. 7 (THIRTEENTH WEEK)

97. Baltimore at Green Bay 1:00

SUNDAY, DEC. 8

98. Chicago at Los Angeles 1:00
 99. Cleveland at Washington 1:15
 100. Detroit at Atlanta 1:15
 101. Minnesota at San Francisco 1:00
 102. New Orleans at Philadelphia 1:15
 103. Pittsburgh at Dallas 1:00
 104. St. Louis at New York 1:30

SATURDAY, DEC. 14 (FOURTEENTH WEEK)

105. Cleveland at St. Louis 1:00

SUNDAY, DEC. 15

106. Baltimore at Los Angeles 1:00
 107. Dallas at New York 1:30
 108. Detroit at Washington 1:15
 109. Green Bay at Chicago 1:00
 110. Minnesota at Philadelphia 1:15
 111. Pittsburgh at New Orleans 1:00
 112. San Francisco at Atlanta 1:15

SATURDAY, DEC. 21

EASTERN CONFERENCE CHAMPIONSHIP (Century vs. Capitol) AT CENTURY DIVISION CHAMPION.

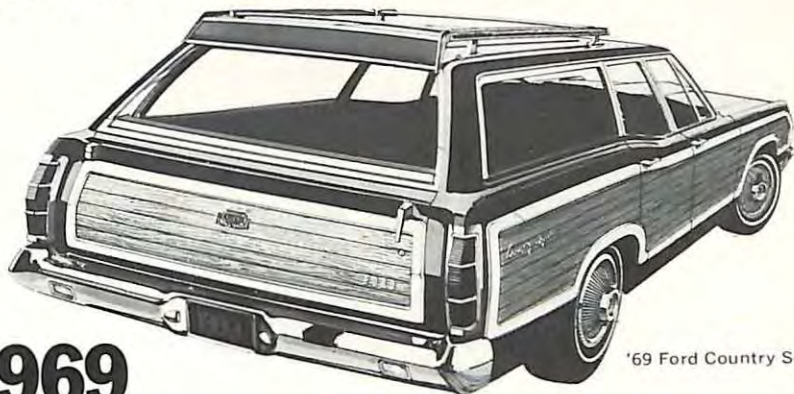
SUNDAY, DEC. 22

WESTERN CONFERENCE CHAMPIONSHIP (Central vs. Coastal) AT COASTAL DIVISION CHAMPION.

SUNDAY, DEC. 29

NFL CHAMPIONSHIP GAME IN HOME CITY OF EASTERN CONFERENCE CHAMPION.

Ready to swing at your Ford Dealer's



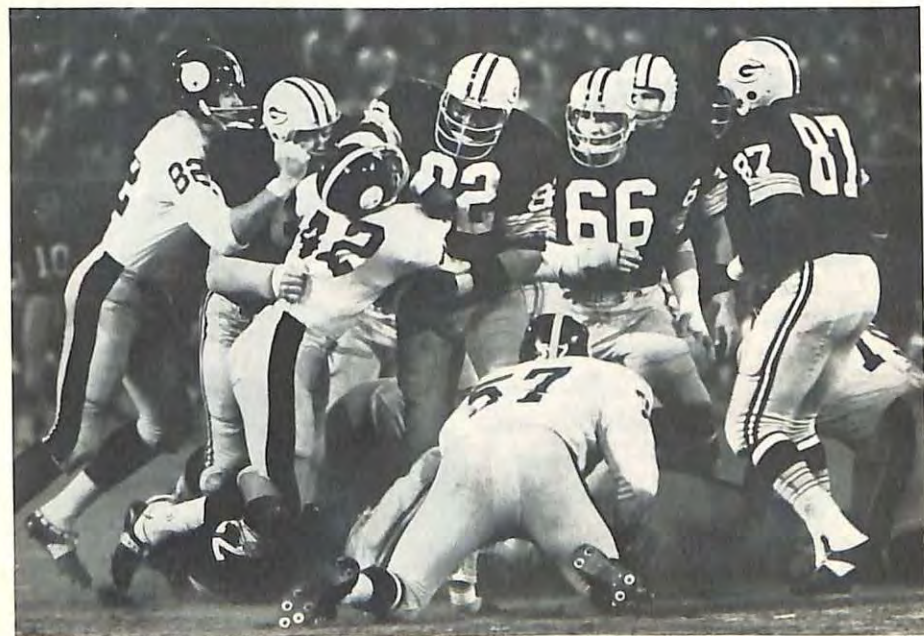
'69 Ford Country Squire

1969 Ford Wagons with new 3-way Magic Doorgate

Ford's new Magic Doorgate (1) flips down, (2) swings wide, (3) with window down or up! At Ford

Dealer's — the place you've got to go to see what's going on!







GREEN BAY PACKERS

WESTERN DIVISION PLAYOFF RECORD

GAMES

Dec. 14, 1941 Packers 14	Bears 33 at Chicago	ATTEND.
Dec. 26, 1965 Packers 13	Colts 10 at Green Bay	(43,425)
Dec. 23, 1967 Packers 28	Rams 7 at Milw.	(50,861)
		(48,861)

RUSHING

Most (Net) Yards Gained 362, vs. Colts, 1965	Most Yards — Individual 88, T. Williams vs. Rams, 1967
Fewest (Net) Yards Gained 217, vs. Rams, 1967	60, J. Taylor vs. Colts, 1965
Most (Net) Yards Allowed 255, vs. Bears, 1941	Most Attempts — Individual 23, J. Taylor vs. Colts, 1965
Fewest (Net) Yards Allowed 175, vs. Colts, 1965	18, T. Williams vs. Rams, 1967
Most Yards — Team 163, vs. Rams, 1967	TDs Rushing — 1 Game 2, T. Williams vs. Rams, 1967
Most Attempts — Team 45, vs. Rams, 1967	Fewest Yds. Allowed Rushing 143, vs. Colts, 1965
	Fewest TDs Allowed Rushing 0, vs. Rams, 1967

PASSING

Most Yards — Team 250, vs. Colts, 1965	Most TDs — 1, C. Isbell vs. Bears, 1941
Most Attempts — 1 Game 39, vs. Colts, 1965	1, B. Starr vs. Rams, 1967
Most Completions — 1 Game 22, Z. Bratkowski vs. Colts, 1965	Most Interceptions — Total 2, Z. Bratkowski
17, B. Starr vs. Rams, 1967	Most Interceptions — 1 Game 2, Z. Bratkowski vs. Colts, 1965
Most Yards — Individual 248, Z. Bratkowski vs. Colts, 1965	Longest 48 yds., Starr to Dale vs. Rams, 1967

SCORING

Most Points — Total 12, T. Williams (2 TDs running)	Most Points — 1 Game 12, T. Williams vs. Rams, 1967
11, D. Chandler (2 FGs, 5 XTRA PTS)	

RECEIVING**Most Passes Caught — Total**

- 9, C. Dale (2 games)
- 8, B. Anderson (1 game)
- 8, B. Dowler (2 games)

Most Passes Caught — 1 Game

- 8, B. Anderson vs. Colts, 1965
- 6, C. Dale vs. Rams, 1967
- 5, B. Dowler vs. Colts, 1965

Most Yardage — 1 Game

- 109 yds., C. Dale vs. Rams, 1967
- 78 yds., B. Anderson vs. Colts, 1965

Most TDs — Total

- 1, held by 3 players

Most TDs — 1 Game

- 1, held by 3 players

Longest

- 48 yds., C. Dale from Starr vs. Rams, 1967

PUNTING**Most Punts — 1 Game**

- 5, D. Chandler vs. Colts, 1965
- 5, D. Anderson vs. Rams, 1967

Longest Average — 1 Game

- 42.6, D. Chandler vs. Colts

Most Punts Returned — 1 Game

- 3, E. Pitts vs. Colts, 1965
- 3, W. Wood vs. Colts, 1965

Most Yardage — 1 Game

- 39, T. Brown vs. Rams, 1967

Longest

- 39, T. Brown vs. Rams, 1967

PUNT RETURNSKICKOFF RETURNS**Most Returns — 1 Game**

- 2, held by 3 men

Most Yardage — 1 Game

- 41, T. Moore vs. Colts, 1965

Longest

- 25, E. Jankowski vs. Bears, 1941

INTERCEPTIONS**Most — 1 Game**

- 1, T. Brown vs. Rams, 1967

Yardage on Interceptions — 1 Game

- 20, T. Brown vs. Rams, 1967

Longest

- 20, T. Brown vs. Rams, 1967

FIELD GOALS**Most — 1 Game**

- 2, D. Chandler vs. Colts, 1965

Attempts — 1 Game

- 3, D. Chandler vs. Colts, 1965

Longest

- 25, D. Chandler vs. Colts, 1965

GREEN BAY PACKERS

NFL CHAMPIONSHIP GAME RECORDS (Does Not Include AFL-NFL Title Game)

CHAMPIONSHIPS WON

*11, Green Bay (1929, 30, 31, 36, 39, 44, 61, 62, 65, 66 & 67)

Rushing:

Most Attempts — lifetime

*106, Jim Taylor, 5 games

Most Attempts — game

31, Jim Taylor vs. Browns, 1965

Most Yards — lifetime

*392, Jim Taylor, 5 games

Most Yards — game

105, Jim Taylor, 1960

105, Paul Hornung, 1965

Passing:

Most Attempts — lifetime

147, Bart Starr, 6 games

Most Attempts — game

35, Bart Starr, 1960 vs. Eagles

Most Completions — lifetime

84, Bart Starr, 6 games

Most Completions — game

25, Bart Starr, 1960

Most Yardage — lifetime

990 yards, Bart Starr, 6 games

Most Yardage — game

304, Bart Starr vs. Dallas, 1966

Most Touchdowns — lifetime

11 Bart Starr, 6 games

Most Touchdowns — game

4, Bart Starr vs. Dallas, 1966

*—League record.

New luxury, new power, in the '69 Thunderbird.

Fewest

Total Yards Allowed — 1 game
116, Green Bay vs. Boston, 1936

Yards Allowed Rushing — 1 game
31, Green Bay vs. New York, 1961
39, Green Bay vs. Boston, 1936

First Downs Allowed — 1 game
6, Green Bay vs. New York, 1961

Punt Returns

Most — 1 game
*8, Green Bay vs. New York, 1944

Most Yardage — 1 game
89, Green Bay vs. New York, 1944

Scoring

Most Points — 1 game
*19, Paul Hornung, G. B. vs. N. Y., 1961 (1 td, 4 xp, 3 fgs.)

Interceptions

Most Passes Intercepted — 1 game
6, Green Bay vs. New York, 1939

Most Yardage Interceptions Returned — 1 game
*123, Green Bay vs. New York, 1939 (6 interceptions)

Field Goals

Most Field Goals — team
*14, Green Bay (11 games, 19 attempts)

Most Attempted — 1 game
*5, Green Bay vs. New York, 1962

Most Field Goals — 1 game
*3, Jerry Kramer, 1962 vs. New York (5 attempts)
*3, Don Chandler, 1965 vs. Cleveland (3 attempts)

*—League record.

GREEN BAY PACKERS

AFL-NFL CHAMPIONSHIP GAME RECORDS

Most Games Won

2, Green Bay,

1967 vs. Kansas City, 35-10

1968 vs. Oakland, 33-14

Most Points Scored

35, vs. Kansas City, 1967

Fewest Points Allowed

10, vs. Kansas City, 1967

Most (Net) Yards Gained

358, vs. Kansas City, 1967

Fewest (Net) Yards Allowed

239, vs. Kansas City, 1967

Rushing

Most Yards — Team

130, vs. Kansas City, 1967

Individual Attempts

17, Ben Wilson, 1968 vs. Oakland

16, Jim Taylor, 1967 vs. Kansas City

Yardage — Individual

65, Ben Wilson, 1968 vs. Oakland

53, Jim Taylor, 1967 vs. Kansas City

Touchdowns Rushing

2, Elijah Pitts, 1967 vs. Kansas City

Fewest Yards Allowed Rushing

72, Kansas City, 1967

Fewest TDs Allowed Rushing

0, Kansas City, 1967

0, Oakland, 1968

Passing

Most Yards — Team

250, vs. Kansas City, 1967

Most Attempts — 1 Game

24, Bart Starr vs. Oakland, 1968

23, Bart Starr, vs. Kansas City, 1967

Most Completions — 1 Game

16, Bart Starr, vs. Kansas City, 1967

Most Yardage — Individual

250, Bart Starr, vs. Kansas City, 1967

Most Touchdowns — 1 Game

2, Bart Starr, 1967 vs. Kansas City

Interceptions — 1 Game

1, Bart Starr, 1967 vs. Kansas City

(23 attempts)

Scoring

Most Points — 1 Game

15, Don Chandler, 1968 vs. Oakland

(4 Fg, 3 Pats)

12, Max McGee, 1967 vs. Kansas City
(2 TDs)

12, Elijah Pitts, 1967 vs. Kansas City
(2 TDs)

Receiving

Most Passes Caught — 1 Game

7, Max McGee, 1967 vs. Kansas City

Most Yardage — 1 Game

138, Max McGee, 1967 vs. Kansas City
(7 receptions)

71, Boyd Dowler, 1968 vs. Oakland

(2 receptions)

Most TD Passes — 1 Game

2, Max McGee, 1967 vs. Kansas City

Punting

Most Punts

6, Donny Anderson, 1968 vs. Oakland

3, Don Chandler, 1967 vs. Kansas City

Highest Average

43.3, Don Chandler, 1967 vs. Kansas City

Punt Returns

Most Punts Returned

3, Donny Anderson, 1967 vs. Kansas City

3, Willie Wood, 1968 vs. Oakland

Most Yardage on Punt Returns

35, Willie Wood, 1968 vs. Oakland

25, Donny Anderson, 1967 vs. Kansas City

Longest Punt Return

31, Willie Wood, 1968 vs. Oakland

15, Donny Anderson, 1967 vs. Kansas City

Kickoff Returns

Most Kickoffs Returned

2, Herb Adderley, 1967 vs. Kansas City

Most Yardage on Kickoff Returns

40, Herb Adderley, 1967 vs. Kansas City

Longest Kickoff Return

25, Donny Anderson, 1967 vs. Kansas City

Interceptions

Most

1, Willie Wood, 1967 vs. Kansas City

1, Herb Adderley, 1968 vs. Oakland

Yards on Interception

60, Herb Adderley, 1968 vs. Oakland

50, Willie Wood, 1967 vs. Kansas City

Shouldn't your "second car"
do more than your first?

Let your Ford Dealer show you
the exciting possibilities for '69.



The Ford Camper Special doubles your fun. A heavy-duty pick-up for cargo, and camping!



Want fine-car luxury in a truck? Ranchero! Room for 12? Club Wagon! Need a cross-country champ? Bronco!



GREEN BAY PACKERS INDIVIDUAL RECORDS

BALL CARRYING

Most Attempts —

- 1,811, Jim Taylor, 1958-1966 (9 seasons). Gained 8,207 yards, averaged 4.53.
1,171, Clarke Hinkle, 1932-41 (10 seasons). Gained 3,860 yards, averaged 3.29.
1,025, Tony Canadeo, 1941-44, 1946-52 ((11 seasons). Gained 4,197 yards, averaged 4.1.

Most Attempts (one season) —

- 272, Jim Taylor, 1962 (14 games), for 1,474 yards, average 5.4 yards.
248, Jim Taylor, 1963 (14 games), for 1,018 yards, average 4.1 yards.
243, Jim Taylor, 1961 (14 games), for 1,307 yards, average 4.8 yards.
235, Jim Taylor, 1964 (14 games), for 1,169 yards, average 5.0 yards.
230, Jim Taylor, 1960 (12 games), for 1,101 yards, average 4.8 yards.
208, Tony Canadeo, 1949 (12 games), for 1,052 yards, average 5.1 yards.

Most Attempts (one game) —

- 32, Jim Grabowski, 1967 vs. Chicago — 111 yds.
30, Jim Taylor, 1963 vs. Pittsburgh — 141 yds.
28, Paul Hornung, 1959 vs. San Francisco — 138 yards.

Total Yards Gained —

- 8,207, Jim Taylor, 1958-66 (9 seasons) in 1,811 attempts.
4,197, Tony Canadeo, 1941-44, 1946-52 (11 seasons, 115 games) in 1,025 attempts, average 4.07 yards.
3,877, Clarke Hinkle, 1932-41 (10 seasons, 113 games), in 1,180 attempts, average 3.28 yards.
3,712, Paul Hornung, 1957-62, 1964-66 (9 seasons), in 1,017 attempts, average 3.65 yards.

Most Yards Gained (one season) —

- 1,474, Jim Taylor, 1962 (272 attempts).
1,307, Jim Taylor, 1961 (243 attempts).
1,169, Jim Taylor, 1964 (235 attempts).
1,101, Jim Taylor, 1960 (230 attempts).
1,052, Tony Canadeo, 1949 (208 attempts).
1,018, Jim Taylor, 1963 (248 attempts).

Most Yards Gained (one game) —

- 186, Jim Taylor, Green Bay vs. New York Giants, 1961 (27 attempts).
167, Billy Grimes, Green Bay vs. New York Yanks, 1950 (10 attempts).
165, Jim Taylor, Green Bay vs. Rams, 1964 (17 attempts).
164, Jim Taylor, Green Bay vs. Minnesota, 1962 (17 attempts).

Longest Run From Scrimmage —

- †97 yards, Andy Uram, Green Bay vs. Chicago Cardinals, October 8, 1939 (touchdown).
84 yards, Jim Taylor, Green Bay vs. Lions, November 8, 1964 (touchdown).
73 yards, Billy Grimes, Green Bay vs. Chicago Bears, October 15, 1960 (touchdown).

Longest Return of Kickoff —

- *106, Al Carmichael, Green Bay vs. Chicago Bears, October 7, 1956 (touchdown).
104, Travis Williams, Green Bay vs. Los Angeles Rams, December 9, 1967 (touchdown).
103, Herb Adderley, Green Bay vs. Baltimore Colts, November 18, 1962 (touchdown).

Longest Punt Return —

- 93 yards, Veryl Switzer, Green Bay vs. Chicago Bears, November 7, 1954 (touchdown).
90 yards, Andy Uram, Green Bay vs. Brooklyn, October 12, 1941 (touchdown).

Longest Return With Intercepted Forward Pass —

- 94 yards, Rebel Steiner, Green Bay vs. Chicago Bears, October 1, 1950 (touchdown).
88 yards, Bob Summerhays, Green Bay vs. Philadelphia, October 14, 1951 (touchdown).

†—League record. Tied by Bobby Gage, Pittsburgh Steelers in 1949.

*—High in NFL.



FORWARD PASSING

Most Passes Completed —

- 1,443, Bart Starr, 1956-67 (12 seasons).
- 826, Tobin Rote, 1949-56 (7 seasons).
- 419, Cecil Isbell, 1938-42 (5 seasons).
- 410, Arnie Herber, 1932-40 (9 seasons).

Most Passes Completed (one season) —

- 180, Tobin Rote, Green Bay, 1954 (attempted 382).
- 178, Bart Starr, 1962 (attempted 285).

Most Passes Completed (one game) —

- 26, Bart Starr, Green Bay vs. Baltimore, October 12, 1958 (46 attempts).
- 24, Bobby Thomason, Green Bay vs. Detroit, November 4, 1951 (33 attempts).

Most Passes Attempted —

- 2,530, Bart Starr, 1956-67 (12 seasons).
- 1,854, Tobin Rote, 1950-56 (completed 826).

Most Passes Attempted (one season) —

- *382, Tobin Rote, 1954.
- 342, Tobin Rote, 1955.
- 295, Bart Starr, 1961.
- 285, Bart Starr, 1962.

Most Passes Attempted (one game) —

- 46, Bart Starr, Green Bay vs. Baltimore, October 12, 1958, (completed 26).
- 42, Tobin Rote, Green Bay vs. Chicago Bears, November 7, 1954 (completed 17).

Fewest Passes Had Intercepted (one season) —

- 3, Bart Starr, 1966, (251 attempts).

Most Passes Had Intercepted (one season) —

- 24, Tobin Rote, 1950 (224 attempts).
- 21, Irv Comp, 1944 (177 attempts).
- 21, Jack Jacobs, 1948 (184 attempts).

Most Passes Had Intercepted (one game) —

- 6, Tom O'Malley, Green Bay vs. Detroit, September 17, 1950 (15 attempts).
- 5, Cecil Isbell, Green Bay vs. New York Giants, November 20, 1938 (19 attempts).
- 5, Jack Jacobs, Green Bay vs. New York Giants, November 23, 1947 (24 attempts).
- 5, Bart Starr, Green Bay vs. Chicago, September 24, 1967.

Most Consecutive Passes Thrown Without Interception —

- *294, Bart Starr, 1964-65.

Most Yards Gained on Passes —

- 20,009, Bart Starr, 1956-67 (12 seasons).
- 11,535, Tobin Rote, 1950-56 (7 seasons).
- 6,741, Arnold Herber, 1932-40 (9 seasons).

Most Yards Gained on Passes (one season) —

- 2,438, Bart Starr, 1962 (14 games).
- 2,418, Bart Starr, 1961 (14 games).
- 2,311, Tobin Rote, 1954 (12 games).

Most Yards Gained on Passes (one game) —

- 335, Tobin Rote, Green Bay vs. Los Angeles Rams, 1951 (20 completions).
- 333, Cecil Isbell, Green Bay vs. Chicago Cardinals, 1942 (10 completions).
- 321, Bart Starr, Green Bay vs. Minnesota Vikings, 1961 (19 completions).
- 320, Bart Starr, Green Bay vs. Baltimore Colts, 1958 (26 completions).

Longest Completed Pass —

- 96 yards, Tobin Rote to Billy Grimes, 1950.
- 92 yards, Cecil Isbell to Don Hutson, 1939.
- 91 yards, Bart Starr to Boyd Dowler, 1960.

Shortest Completed Pass (for touchdown) —

- 4 inches, Cecil Isbell to Don Hutson, Green Bay vs. Cleveland Rams, October 18, 1942 (touchdown).

*—League record.

GREEN BAY

PACKERS

INDIVIDUAL RECORDS (continued)

FORWARD PASSING (continued)

Most Touchdown Passes —

- 120, Bart Starr, 1956-67 (12 seasons).
- 89, Tobin Rote, 1950-56 (7 seasons).
- 59, Cecil Isbell, 1938-42 (5 seasons).
- 51, Arnie Herber, 1932-40 (9 seasons).

Most Touchdown Passes (one season) —

- 24, Cecil Isbell, 1942.
- 18, Tobin Rote, 1956.
- 16, Bart Starr, 1961.
- 16, Bart Starr, 1965.

Most Touchdown Passes (one game) —

- 5, Cecil Isbell, Green Bay vs. Cleveland Rams, November 1, 1942.

Most Consecutive Games Throwing Touchdown Passes —

- 23, Cecil Isbell (12 in 1941, 11 in 1942).

Best Passing Efficiency (500 or more attempts) —

- 57.0%, Bart Starr, 1956-67 (12 seasons).
- 50.06%, Cecil Isbell, 1938-42 (5 seasons).
- 50.06%, Arnie Herber, 1932-40 (9 seasons).

PASS RECEIVING

Most Passes Caught —

- 489, Don Hutson, 1935-45 (11 seasons, 118 games).
- 372, Boyd Dowler, 1959-67 (9 seasons).
- 345, Max McGee, 1954, 1957-67 (12 seasons).
- 303, Bill Howton, 1952-58 (7 seasons, 80 games).

Most Passes Caught (one season) —

- 74, Don Hutson, 1942.
- 58, Don Hutson, 1941, 1944.
- 55, Bill Howton, 1956.
- 54, Boyd Dowler, 1967.
- 53, Bill Howton, 1952.
- 53, Boyd Dowler, 1963.
- 52, Bill Howton, 1954.
- 51, Max McGee, 1961.

Most Passes Caught (one game) —

- 14, Don Hutson, vs. New York Giants, 1942 (134 yards).
- 13, Don Hutson, vs. Cleveland Rams, 1942 (209 yards).
- 11, Bob Mann, vs. Los Angeles Rams, 1951, (123 yards).
- 11, Bill Howton, vs. Baltimore, 1954 (147 yards).
- 10, Max McGee, vs. Minnesota, 1962 (159 yards).
- 9, Max McGee, vs. Los Angeles Rams, 1954 (105 yards).

Most Touchdown Passes Received —

- *101, Don Hutson, 1935-45 (11 seasons).
- 50, Max McGee, 1954, 1957-67 (12 seasons).
- 43, Bill Howton, 1952-58 (7 seasons).

Most Touchdown Passes Received (one season) —

- *17, Don Hutson, 1942 (11 games).
- 13, Bill Howton, 1952 (12 games).
- 12, Bill Howton, 1956 (12 games).
- 9, Max McGee, 1954 (12 games).

*—League record.

PASS RECEIVING (continued)**Most Touchdown Passes Received (one game) —**

- 4, Don Hutson, Green Bay vs. Detroit, October 7, 1945.
- 3, Don Hutson (7 times).
- 3, Bill Howton, Green Bay vs. Detroit, November 27, 1952.
- 3, Max McGee, Green Bay vs. Philadelphia, October 30, 1954.

Most Yards Catching Passes —

- *8,010, Don Hutson, 1935-1945 (11 seasons).
- 6,279, Max McGee, 1954, 1957-67 (12 seasons).
- 5,773, Boyd Dowler, 1959-67 (9 seasons).
- 5,581, Bill Howton, 1952-58 (7 seasons).

Most Yards Gained Catching Passes (one season) —

- *1,231, Bill Howton, 1952.
- 1,211, Don Hutson, 1942.
- 1,188, Bill Howton, 1956.
- 901, Boyd Dowler, 1963.
- 883, Max McGee, 1961.

Most Yards Gained Catching Passes (one game) —

- 257, Bill Howton, Green Bay vs. Los Angeles Rams, October 21, 1956 (7 passes).
- 237, Don Hutson, Green Bay vs. Brooklyn, November 21, 1943 (8 passes).
- 200, Bill Howton, Green Bay vs. Los Angeles Rams, December 7, 1962 (6 passes).

Longest Completed Pass —

- 96 yards, Tobin Rote to Billy Grimes, 1950.
- 92 yards, Cecil Isbell to Don Hutson, 1939.
- 91 yards, Bart Starr to Boyd Dowler, 1960.

Shortest Completed Pass (for touchdown) —

- 4 inches, Don Hutson from Cecil Isbell, Green Bay vs. Cleveland Rams, October 18, 1942 (touchdown).

SCORING**Total Points —**

- *823, Don Hutson, 1935-45 ((11 seasons). (105 touchdowns, 172 extra points, 7 field goals).
- 760, Paul Hornung, 1957-62, 1964-66 (9 seasons). (62 touchdowns, 190 extra points, 66 field goals).
- 546, Jim Taylor, 1958-65 (9 seasons). (91 touchdowns).
- 455, Fred Cone, 1951-57 (7 seasons). (16 touchdowns, 200 extra points, 53 field goals).

Most Points (one season) —

- *176, Paul Hornung, 1960 (15 touchdowns, 41 extra points, 15 field goals).
- 146, Paul Hornung, 1961 (10 touchdowns, 41 extra points, 15 field goals).
- 138, Don Hutson, 1942 (17 touchdowns, 33 extra points, 1 field goal).

Most Points (one game) —

- 33, Paul Hornung, Green Bay vs. Baltimore (4 touchdowns, 6 extra points, 1 field goal).
- 31, Don Hutson, Green Bay vs. Detroit, 1945 (4 touchdowns, 7 extra points).
- 30, Paul Hornung, Green Bay vs. Baltimore, 1965 (5 touchdowns).

Most Points (one quarter) —

- 29, Don Hutson, Green Bay vs. Detroit, October 7, 1945.

Most Consecutive Games Scoring One or More Points —

- 41, Don Hutson (2 in 1940, 12 in 1941, 11 in 1942, 10 in 1943, 6 in 1944).

Most Touchdowns —

- *105, Don Hutson, 1935-45 (11 seasons).
- 91, Jim Taylor, 1958-66 (9 seasons).
- 62, Paul Hornung, 1957-62, 1964-66 (9 seasons).
- 50, Verne Lewellen, 1924-32 (9 seasons).

*—League record.

SCORING (continued)**Most Touchdowns (one season) —**

- 19, Jim Taylor, 1962.
- 17, Don Hutson, 1942.
- 16, Jim Taylor, 1961.
- 15, Paul Hornung, 1960.
- 15, Jim Taylor, 1964.

Most Touchdowns (one game) —

- 5, Paul Hornung, vs. Baltimore, 1965.
- 4, Don Hutson, vs. Detroit, 1945.
- 4, Paul Hornung, vs. Baltimore, 1961.
- 4, Jim Taylor, vs. Cleveland, 1961.
- 4, Donny Anderson vs. Cleveland, 1967

Most Field Goals —

- 66, Paul Hornung (1957-62, 1964).
- 53, Fred Cone (1951-57).

Most Field Goals (one season) —

- 19, Don Chandler, 1967 (26 attempts).
- 17, Don Chandler, 1965 (26 attempts).
- 16, Fred Cone, 1955 (24 attempts).
- 16, Jerry Kramer, 1963 (33 attempts).
- 15, Paul Hornung, 1961 (22 attempts).
- 15, Paul Hornung, 1960 (28 attempts).

Longest Field Goal —

- 52 yards, Ted Fritsch, vs. New York Yanks.
- 52 yards, Paul Hornung, vs. Chicago Bears (Free Kick).

Most Points After Touchdown —

- 200, Fred Cone, 1951-57 (7 seasons).
- 190, Paul Hornung, 1957-62, 1964 (7 seasons).
- 172, Don Hutson, 1935-45 (11 seasons).

Most Points After Touchdown (one season) —

- 43, Jerry Kramer, 1963.
- 41, Paul Hornung, 1961.
- 41, Don Chandler, 1966.
- 39, Don Chandler, 1967.
- 38, Jerry Kramer, 1962.
- 37, Don Chandler, 1965.

Most Points After Touchdown (one game) —

- 8, Don Chandler, vs. Atlanta, 1966.
- 7, Don Hutson, vs. Detroit, 1945.
- 7, Paul Hornung, vs. Cleveland, 1961.
- 7, Jerry Kramer, vs. Philadelphia, 1962.
- 7, Don Chandler, vs. Cleveland, 1967.

Most Consecutive Points After Touchdown —

- 96, Paul Hornung, 1960-62.
- 62, Don Hutson, (5 games in 1942, 10 in 1943, 2 in 1944).

Most Punts (one season) —

- 72, Max McGee, 1954.
- 71, Jug Girard, 1950.

Most Punts (one game) —

- 11, Jug Girard, Green Bay vs. Chicago Bears, October 15, 1950 (418 yards).
- 10, Jack Jacobs, Green Bay vs. Chicago Bears, November 14, 1948 (392 yards).

Longest Punt —

- 90 yards, Don Chandler, vs. San Francisco, 1965.
- 78 yards, Jack Jacobs, 1948.
- 75 yards, Boyd Dowler, 1961 and 1962.

Best Punting Average (one season) —

- 44.7 yards, Jerry Norton, 1963 (51 punts).
- 44.1 yards, Boyd Dowler, 1961 (37 punts).
- 43.5 yards, Jack Jacobs, 1947 (57 punts).
- 43.2 yards, Dick Deschaine, 1955 (56 punts).

*—League record.

PUNT RETURNS

Most Punt Returns (one season) —

- 29, Billy Grimes, 1950 (returned 555 yds.). 24, Veryl Switzer, 1954 (returned 306 yds.).
 25, Al Carmichael, 1957 (returned 190 yds.). 24, Veryl Switzer, 1955 (returned 158 yds.).

Most Punt Returns (one game) —

- 5, Billy Grimes, Green Bay vs. Baltimore, November 5, 1950 (returned 75 yards).
 5, Veryl Switzer, Green Bay vs. Baltimore, October 24, 1954 (returned 6 yards).
 5, Willie Wood, Green Bay vs. Los Angeles, September 25, 1966 (returned 25 yards).

Most Kickoff Returns (one season) —

- 33, Al Carmichael, 1956 (returned 927 yards).

Most Kickoff Returns (one game) —

- 5, Al Carmichael, Green Bay vs. Baltimore, October 13, 1957 (116 yards).
 5, Al Carmichael, Green Bay vs. San Francisco, November 23, 1953 (96 yards).
 5, Billy Grimes, Green Bay vs. Detroit, November 27, 1952 (93 yards).

Most Yards Returned on Kickoffs (one game) —

- 172, Travis Williams, Green Bay vs. Cleveland Browns, November 12, 1967 (2 returns).
 166, Al Carmichael, Green Bay vs. Los Angeles Rams, October 11, 1953 (4 returns).
 132, Al Carmichael, Green Bay vs. Los Angeles Rams, December 12, 1954 (4 returns).

LENGTH OF SERVICE

Most Years Head Coach —

- 31, Earl L. "Curly" Lambeau, Green Bay, 1919-49.
 2, Earl L. "Curly" Lambeau, Chicago Cardinals, 1950-51.
 2, Earl L. "Curly" Lambeau, Washington Redskins, 1952-53.
 35 — Total.

Most Years Active Player —

- 15, Johnny "McNally" Blood (back), Duluth, Green Bay, Pittsburgh — 1925-39.

DON HUTSON'S PASS RECEIVING

Most Passes Caught — (one season), 74; (one game), 14.

Most Touchdown Passes — (11 seasons), 100; (one season), 17; (one game), 3 (seven times).

Most Yards Gained Catching Passes — (11 seasons), 8,010; (one season), 1,211 (one game), 237.

Longest Completed Pass — 92 yards.

Shortest Completed Pass — 4 inches.

Total Points Scored — (11 seasons), 823; (one season), 138; (one game), 31.

Total Touchdowns Scored — 105.

Most Touchdowns — (one season), 17; (one game), 4.

Most Points After Touchdowns — 172 (11 seasons).

	Games	Rcvd.	Yards Gained	Lgst. Gain	Tds.	Games	Rcvd.	Yards Gained	Lgst. Gain	Tds.	
1935	10	18	420	83	6	1941	11	†58	738	45	*10
1936	12	34	536	*87	9	1942	11	74	*1211	73	*17
1937	11	*41	552	78	7	1943	10	47	776	79	11
1938	10	32	548	54	9	1944	10	58	866	55	9
1939	11	34	*846	92	6	1945	10	47	834	75	9
1940	11	45	664	36	7	Total	118	†489	†8010	92	†100

*—Set League Record. †—Tied League Record. ‡—League Record.

1969 Ford: built to take over any road. Quietly.

GREEN BAY PACKERS TEAM RECORDS

YARDS GAINED

Most Yards Gained Passing (one season) —

2,846, 1951.	2,602, 1966.
2,758, 1967.	2,508, 1965.
2,688, 1952.	2,474, 1964.

Most Yards Gained Passing (one game) —

- 423, Green Bay vs. Chicago Cardinals, November 1, 1942 (13 completions, 6 touchdowns).
380, Green Bay vs. Detroit, October 26, 1952 (26 completions, 2 touchdowns).
334, Green Bay vs. Philadelphia, November 11, 1962 (19 completions, 1 touchdown).

FIRST DOWNS

Most First Downs (one season) —

- *281, 1962 (151 rushing, 114 passing, 16 penalty).
274, 1961 (142 rushing, 115 passing, 17 penalty).

Most First Downs (one game) —

- *37, Green Bay vs. Philadelphia, November 11, 1962 (21 rushing, 15 passing, 1 penalty).
28, Green Bay vs. Los Angeles Rams, October 17, 1954 (14 rushing, 11 passing, 3 penalty).
28, Green Bay vs. New York, October 22, 1967 (19 rushing, 7 passing, 2 penalty).
28, Green Bay vs. Cleveland, November 12, 1967 (15 rushing, 11 passing, 2 penalty).

Fewest First Downs to Opponents (one game) —

- *0, Green Bay vs. New York Giants, October 1, 1933 (Packers lost, 10-7) tied.

FORWARD PASSING

Most Passes Completed (one season) —

- 231, Green Bay, 1951 (attempted 478). 195, Green Bay, 1954 (attempted 412).

Most Passes Attempted (season) —

- *478, Green Bay, 1951 (completed 231).

Best Passing Efficiency

- More than 250 — 60.7%, 1966 (193 completions in 318 attempts).
More than 250 — 60.1%, 1962 (178 completions in 285 attempts).
More than 250 — 57.9%, 1964 (186 completions in 321 attempts).
More than 250 — 57.8%, 1961 (177 completions in 306 attempts).

Most Touchdown Passes (one season) —

- 28, Green Bay, 1942. 26, Green Bay, 1951. 26, Green Bay, 1952.

Most Passes Had Intercepted (one game) —

- 8, Green Bay vs. New York Giants, November 21, 1948.

Most Touchdown Passes (one game) —

- 6, Green Bay vs. Chicago Cardinals, November 1, 1942; and
Green Bay vs. Detroit, October 7, 1945.

SCORING

Most Touchdowns (one season) —

- | | |
|----------------------|----------------------|
| 53, 1962 (14 games). | 43, 1966 (14 games). |
| 49, 1961 (14 games). | 41, 1960 (12 games). |
| 46, 1963 (14 games). | 41, 1942 (11 games). |
| 44, 1964 (14 games). | |

GREEN BAY PACKERS

TEAM RECORDS (continued)

SCORING (continued)

Most Touchdowns Running (one season) —

39, 1962. 32, 1960. 31, 1961.

Most Touchdowns Passing (one season) —

28, Green Bay, 1942 (11 games).

26, Green Bay, 1951 (12 games).

26, Green Bay, 1952 (12 games).

Most Points After Touchdown (one season) —

52, 1962. 49, 1961. 43, 1963. 41, 1960. 41, 1964. 41, 1966.

Most Field Goals (one season) —

19, 1967 (26 attempts).

17, 1965 (37 attempts).

16, 1963 (33 attempts).

16, 1961 (24 attempts).

16, 1955 (24 attempts).

15, 1962 (20 attempts).

Most Points (one season) —

415, 1962 (14 games).

391, 1961 (14 games).

369, 1963 (14 games).

342, 1964 (14 games).

Fewest Points (one season) —

80, Green Bay, 1922 (12 games).

73, Green Bay, 1921 (10 games).

Most Points Scored (one game) —

57, Green Bay vs. Detroit, October 7, 1945.

56, Green Bay vs. Atlanta, October 23, 1965.

55, Green Bay vs. Chicago Cardinals, 1942.

55, Green Bay vs. Cleveland, 1967.

Most Points (one game, both teams) —

87, Detroit (52) vs. Green Bay (35) November 22, 1951.

83, Chicago Bears (52) vs. Green Bay (31) November 6, 1955.

Most Points (one team, one quarter) —

*41, Green Bay vs. Detroit (second quarter) October 7, 1945.

35, Green Bay vs. Cleveland (first quarter) November 12, 1967.

Most Touchdowns Rushing (one game) —

6, vs. Cleveland, 1961.

6, vs. Pittsburgh, 1941.

6, vs. Philadelphia, 1962.

Most Points After Touchdown (one game) —

8, vs. Atlanta, 1966.

7, vs. Chicago Cardinals, 1942.

7, vs. Detroit, 1945.

7, vs. Cleveland, 1961.

7, vs. Philadelphia, 1962.

7, vs. Cleveland, 1967.

Most Touchdowns Passing (one game) —

6, Green Bay vs. Chicago Cardinals, November 1, 1942.

6, Green Bay vs. Detroit, October 7, 1945.

Most Touchdowns (one game) —

8, Green Bay vs. Detroit, October 7, 1945.

8, Green Bay vs. Atlanta, October 23, 1966.

*—League record.

GREEN BAY PACKERS

TEAM RECORDS (continued)

PUNTING

Most Punts (one season) —

87, Green Bay, 1949.

78, Green Bay, 1948.

Fewest Punts (one season) —

48, Green Bay, 1944.

48, Green Bay, 1960.

INTERCEPTIONS

Most Passes Intercepted By (one season) —

*42, Green Bay, 1943 (opponents attempted 242).

Best Percentage of Interceptions By (one season) —

*17.3, Green Bay, 1943 (opponents attempted 242).

Most Passes Intercepted By (one team, one game) —

*9, Green Bay vs. Detroit, October 24, 1943.

Most Interceptions Returned for Touchdowns (one season) —

*6, Green Bay, 1966 (intercepted 28).

5, Green Bay, 1943 (intercepted 24).

Most Yards Interceptions Returned (one season) —

606, Green Bay, 1943 (average 14.3).

CONSECUTIVE PERFORMANCES

Most Consecutive Victories —

12, Green Bay, 1928-29.

Most Consecutive Games Without Defeat —

23, Green Bay — 1928, 1929, 1930 (won 21, tied 2).

*—League record.

GREEN BAY PACKERS VS. OPPONENTS — LEAGUE PLAY ONLY

WESTERN CONFERENCE

CENTRAL DIV.

	W	L	T
GB vs. Chicago Bears	39	53	6
Detroit Lions	40	26	3
Minnesota Vikings	11	3	0

COASTAL DIV.

GB vs. Atlanta Falcons	2	0	0
Baltimore Colts	17	14	0
Los Angeles Rams	27	15	1
San Francisco 49'ers	16	16	1

EASTERN CONFERENCE

CENTURY DIV.

	W	L	T
GB vs. Cleveland Browns	6	3	0
New Orleans Saints	0	0	0
Pittsburgh Steelers	17	7	0
St. Louis Cardinals	36	20	3

CAPITOL DIV.

GB vs. Dallas Cowboys	3	0	0
New York Giants	18	15	2
Philadelphia Eagles	15	2	0
Washington Redskins	7	5	0

GREEN BAY PACKERS RESULTS BY SEASONS

1919	
PACKERS	OPP.
53 Menominee	0
61 Marinette	0
54 New London	0
87 Sheboygan	0
76 Racine	6
33 Ishpeming	0
85 Oshkosh	0
53 Milwaukee A.C.	0
46 Chicago A.C.	0
17 Stambaugh	0
0 Beloit	6
565	12
Packers W. 10, L. 1, T. 0	

1920	
PACKERS	OPP.
3 Chicago Boosters	3
56 Kaukauna	0
3 Stambaugh	0
25 Marinette	0
62 DePere	0
7 Beloit	0
9 Milw. All-Stars	0
3 Beloit	14
19 Menominee	7
26 Lapham A.C.	0
14 Stambaugh	0
227	24
Packers W. 9, L. 1, T. 1	

1921	
PACKERS	OPP.
13 Chicago Boosters	0
49 Rockford	0
40 Chicago Corn-H	0
7 Beloit	0
3 Rock Island	10
7 Minneapolis	6
43 Evansville	6
14 Hammond	7
3 Cardinals	3
0 Staleys	20
3 Racine	3
182	55
Packers W. 7, L. 2, T. 2	

1922	
PACKERS	OPP.
*0 Duluth	6
3 Cardinals	6
14 Rock Island	19
6 Racine	10
0 Milwaukee	0
0 Rock Island	0
3 Columbus	0
14 Marines	6
3 Racine	3
13 Milwaukee	0
10 Duluth	0
14 Racine	0
80	50
Packers W. 5, L. 4, T. 3	

1923	
PACKERS	OPP.
*10 Hibbing	0
12 Marines	0
0 St. Louis	0
0 Chicago Bears	3
12 Milwaukee	0
3 Racine	24
3 St. Louis	0
10 Milwaukee	7
16 Racine	0
10 Duluth	0
19 Hammond	0
95	34
Packers W. 8, L. 2, T. 1	

1924	
PACKERS	OPP.
*15 Ironwood	0
5 Chicago Bears	0
3 Duluth	6
0 Cardinals	3
16 Kansas City	0
17 Milwaukee	0
19 Marines	0
6 Racine	3
13 Duluth	0
17 Milwaukee	10
0 Chicago Bears	3
17 Kansas City	6
0 Racine	7
128	38
Packers W. 9, L. 4, T. 0	

1925	
PACKERS	OPP.
14 Chicago Bears	10
0 Rock Island	3
33 Rochester	13
20 Rock Island	0
31 Milwaukee	0
6 Cardinals	9
7 Dayton	0
7 Frankford	13
0 Chicago Bears	21
0 Pottsville	31
14 Providence	10
132	110
Packers W. 6, L. 5, T. 0	

1926	
PACKERS	OPP.
*79 Iron Mountain	0
21 Detroit	0
6 Chicago Bears	6
7 Milwaukee	0
7 Cardinals	13
0 Duluth	0
35 Racine	0
3 Cardinals	0
21 Milwaukee	0
14 Louisville	0
13 Chicago Bears	19
14 Frankford	19
7 Detroit	0
3 Chicago Bears	3
230	60
Packers W. 8, L. 3, T. 3	

1927	
PACKERS	OPP.
*34 Milwaukee	0
14 Dayton	0
12 Cleveland	7
6 Chicago Bears	7
20 Duluth	0
13 Cardinals	0
13 N. Y. Yankees	0
*22 Milwaukee	7
6 Cardinals	6
6 Dayton	0
6 Chicago Bears	14
17 Frankford	9
169	50
Packers W. 9, L. 2, T. 1	

* — Non-League game.

Meet the new '69 Mustangs: Mach 1 and Grande.

RESULTS BY SEASON (continued)

1928

PACKERS	OPP.
*19 Minneapolis	0
9 Frankford	19
12 Chicago Bears	12
0 N. Y. Giants	6
20 Cardinals	0
16 Chicago Bears	6
17 Dayton	0
26 Pottsville	14
0 N. Y. Yankees	0
7 N. Y. Giants	0
0 Pottsville	26
7 Providence	7
0 Frankford	2
6 Chicago Bears	0

139 92

Packers W. 7, L. 4, T. 3

1929

PACKERS	OPP.
*14 Portsmouth	0
9 Dayton	2
23 Chicago Bears	0
9 Cardinals	2
14 Frankford	2
24 Minneapolis	0
7 Cardinals	6
16 Minneapolis	6
14 Chicago Bears	0
12 Cardinals	0
20 New York	6
0 Frankford	0
25 Providence	0
25 Chicago Bears	0

212 24

Packers W. 13, L. 0, T. 1

1930

PACKERS	OPP.
*46 Oshkosh	0
14 Cardinals	0
7 Chicago Bears	0
14 New York	7
27 Frankford	12
13 Minneapolis	0
19 Minneapolis	0
47 Portsmouth	13
13 Chicago Bears	12
6 Cardinals	13
6 New York	13
25 Frankford	7
37 Stapleton	7
0 Chicago Bears	21
6 Portsmouth	6

272 111

Packers W. 10, L. 3, T. 1

1931

PACKERS	OPP.
26 Cleveland	0
32 Brooklyn	6
7 Chicago Bears	0
27 New York	7
26 Cardinals	7
15 Frankford	7
48 Providence	20
6 Chicago Bears	2
26 Stapleton	0
13 Cardinals	21
14 New York	10
38 Providence	7
7 Brooklyn	0
6 Chicago Bears	7

291 94

Packers W. 12, L. 2, T. 0

1932

PACKERS	OPP.
*45 Grand Rapids	0
15 Cardinals	7
0 Chicago Bears	0
13 New York	0
15 Portsmouth	10
2 Chicago Bears	0
13 Brooklyn	0
26 Stapleton	0
19 Cardinals	9
21 Boston	0
0 New York	6
7 Brooklyn	0
21 Stapleton	3
0 Portsmouth	19
0 Chicago Bears	9

197 63

Packers W. 11, L. 3, T. 1

1933

PACKERS	OPP.
7 Boston	7
7 Chicago Bears	14
7 New York	10
17 Portsmouth	0
47 Pittsburgh	0
7 Chicago Bears	10
35 Philadelphia	9
14 Cardinals	6
0 Portsmouth	7
7 Boston	20
6 New York	17
21 Stapleton	0
10 Philadelphia	0
6 Chicago Bears	7

191 107

Packers W. 6, L. 7, T. 1

1934

PACKERS	OPP.
*28 Fort Atkinson	7
19 Philadelphia	0
10 Chicago Bears	24
20 New York	6
0 Detroit	3
41 Cincinnati	0
15 Cardinals	0
14 Chicago Bears	27
10 Boston	0
3 New York	17
0 Cardinals	9
3 Detroit	0
0 Cardinals	6
21 St. Louis	14

184 119

Packers W. 8, L. 6, T. 0

1935

PACKERS	OPP.
*49 LaCrosse	0
6 Cardinals	7 H
7 Chi. Bears	0 H
16 New York	7 H
27 Pittsburgh	0 H
0 Cardinals	3 M
13 Detroit	3 M
17 Chi. Bears	14 A
31 Detroit	7 H
10 Detroit	20 A
34 Pittsburgh	14 A
7 Cardinals	9 A
13 Philadelphia	6 A

230 96

Packers W. 9, L. 4, T. 0

1936

PACKERS	OPP.
10 Cardinals	7 H
3 Chi. Bears	30 H
24 Cardinals	0 M
31 Boston	2 H
20 Detroit	18 H
42 Pittsburgh	10 M
21 Chi. Bears	10 A
7 Boston	3 A
38 Brooklyn	7 A
26 New York	14 A
26 Detroit	17 A
0 Cardinals	0 A
†21 Boston	6 A

269 124

Packers W. 11, L. 1, T. 1

* — Non-League game.

† — World Championship game.

H — Home A — Away M — Milwaukee

1937

PACKERS	
*0 All-Stars	6 A
7 Cardinals	14 H
2 Chi. Bears	14 H
26 Detroit	6 H
34 Cardinals	13 M
35 Cleveland	10 A
35 Cleveland	7 H
14 Detroit	13 A
24 Chi. Bears	14 A
37 Philadelphia	7 H
0 New York	10 A
6 Washington	14 A

220 128
Packers W. 7, L. 5, T. 0

1938

PACKERS	
26 Cleveland	17 H
0 Chi. Bears	2 H
28 Cardinals	7 M
24 Cardinals	22 A
7 Detroit	17 H
35 Brooklyn	7 M
20 Pittsburgh	0 H
28 Cleveland	7 A
24 Chi. Bears	17 A
28 Detroit	7 A
3 New York	15 A
17 New York	23 A

240 141
Packers W. 8, L. 4, T. 0

1939

PACKERS	
14 Cardinals	10 H
21 Chi. Bears	16 H
24 Cleveland	27 H
27 Cardinals	20 M
26 Detroit	7 H
24 Washington	14 M
27 Chi. Bears	30 A
23 Philadelphia	16 A
28 Brooklyn	0 A
7 Cleveland	6 A
12 Detroit	7 A
†27 New York	0 M

260 153
Packers W. 10, L. 2, T. 0

1940

PACKERS	
*45 All-Stars	28 A
27 Philadelphia	20 H
10 Chi. Bears	41 H
31 Cardinals	6 M
31 Cleveland	14 H
14 Detroit	23 H
24 Pittsburgh	3 M
7 Chi. Bears	14 A
28 Cardinals	7 A
3 New York	7 A
50 Detroit	7 A
13 Cleveland	13 A

283 183
Packers W. 7, L. 4, T. 1

1941

PACKERS	
23 Detroit	0 H
24 Cleveland	7 M
17 Chi. Bears	25 H
14 Cardinals	13 M
30 Brooklyn	7 M
17 Cleveland	14 A
24 Detroit	7 A
16 Chi. Bears	14 A
17 Cardinals	9 H
54 Pittsburgh	7 A
22 Washington	17 A

258 120
Packers W. 10, L. 1, T. 0
14 Chi. Bears 33
(Divisional Playoff)

1942

PACKERS	
28 Chi. Bears	44 H
17 Cardinals	13 A
38 Detroit	7 M
45 Cleveland	28 H
28 Detroit	7 A
55 Cardinals	24 H
30 Cleveland	12 A
7 Chi. Bears	38 A
21 New York	21 A
7 Philadelphia	0 A
24 Pittsburgh	21 M

300 215
Packers W. 8, L. 2, T. 1

1943

PACKERS	
21 Chi. Bears	21 H
28 Cardinals	7 A
35 Detroit	14 H
7 Washington	33 M
27 Detroit	6 A
35 New York	21 A
7 Chi. Bears	21 A
35 Cardinals	14 M
31 Brooklyn	7 A
38 Phil-Pitt	28 A

264 172
Packers W. 7, L. 2, T. 1

1944

PACKERS	
14 Brooklyn	7 M
42 Chi. Bears	28 H
27 Detroit	6 M
34 Card-Pitt	7 H
30 Cleveland	21 H
14 Detroit	0 A
0 Chi. Bears	21 A
†14 New York	7 A
42 Cleveland	7 A
0 New York	24 A
35 Card-Pitt	20 A

252 148
Packers W. 8, L. 2, T. 0

1945

PACKERS	
*19 All-Stars	7 A
31 Chi. Bears	21 H
57 Detroit	21 M
14 Cleveland	27 H
38 Boston Yanks	14 M
33 Cardinals	14 H
24 Chi. Bears	28 A
7 Cleveland	20 A
28 Boston Yanks	0 A
23 New York	14 A
3 Detroit	14 A

277 180
Packers W. 7, L. 4, T. 0

1946

PACKERS	
7 Chi. Bears	30 H
17 L. Angeles	21 M
19 Philadelphia	7 A
17 Pittsburgh	7 H
10 Detroit	7 M
7 Chi. Bears	10 A
19 Cardinals	7 A
9 Detroit	0 A
6 Cardinals	24 H
20 Washington	7 A
17 L. Angeles	38 A

148 158
Packers W. 6, L. 5, T. 0

1947

PACKERS	
29 Chi. Bears	20 H
17 L. Angeles	14 M
10 Cardinals	14 H
27 Washington	10 M
34 Detroit	17 H
17 Pittsburgh	18 M
17 Chi. Bears	20 A
20 Cardinals	21 A
24 New York	24 A
30 L. Angeles	10 A
35 Detroit	14 A
14 Philadelphia	28 A

274 210
Packers W. 6, L. 5, T. 1

1948

PACKERS	
31 Boston Yanks	0 A
7 Chi. Bears	45 H
33 Detroit	21 H
7 Cardinals	17 M
16 L. Angeles	0 H
7 Washington	23 M
20 Detroit	24 A
7 Pittsburgh	38 A
6 Chi. Bears	7 A
3 New York	49 M
10 L. Angeles	24 A
7 Cardinals	42 A

154 290
Packers W. 3, L. 9, T. 0

RESULTS BY SEASON (continued)

1949

PACKERS

0 Chi. Bears	17 H
7 L. Angeles	48 H
19 N. Y. Bulldogs	0 A
17 Cardinals	39 M
7 L. Angeles	35 A
16 Detroit	14 M
3 Chi. Bears	24 A
10 Giants	30 H
7 Pittsburgh	30 M
21 Cardinals	41 A
0 Washington	30 A
7 Detroit	21 A

114 329

Packers W. 2, L. 10, T. 0

1950

PACKERS

7 Detroit	45 H
35 Washington	21 M
31 Chi. Bears	21 H
31 N. Y. Yanks	44 A
14 Chi. Bears	28 A
17 N. Y. Yanks	35 H
21 Baltimore	41 A
14 L. Angeles	45 M
21 Detroit	24 A
25 S. Fran.	21 H
14 L. Angeles	51 A
14 S. Fran.	30 A

244 406

Packers W. 3, L. 9, T. 0

1951

PACKERS

20 Chi. Bears	31 H
35 Pittsburgh	33 M
37 Philadelphia	24 H
0 L. Angeles	28 M
29 N. Y. Yanks	27 A
17 Detroit	24 H
7 Pittsburgh	28 A
13 Chi. Bears	24 A
35 Detroit	52 A
28 N. Y. Yanks	31 H
19 S. Fran.	31 A
14 L. Angeles	42 A

254 375

Packers W. 3, L. 9, T. 0

1952

PACKERS

14 Chi. Bears	24 H
35 Washington	20 M
28 L. Angeles	30 M
24 Dallas	14 A
17 Detroit	52 H
12 Philadelphia	20 M
41 Chi. Bears	28 A
17 N. Y. Giants	3 A
42 Dallas	14 H
24 Detroit	48 A
27 L. Angeles	45 A
14 S. Fran.	24 A

295 302

Packers W. 6, L. 6, T. 0

1953

PACKERS

0 Cleveland	27 M
13 Chi. Bears	17 H
20 L. Angeles	38 M
37 Baltimore	14 H
14 Pittsburgh	31 A
35 Baltimore	24 A
21 Chi. Bears	21 A
7 Detroit	14 H
7 S. Fran.	37 M
15 Detroit	34 A
14 S. Fran.	48 A
17 L. Angeles	33 A

200 338

Packers W. 2, L. 9, T. 1

1954

PACKERS

20 Pittsburgh	21 H
3 Chi. Bears	10 H
17 S. Fran.	23 M
35 L. Angeles	17 M
7 Baltimore	6 A
37 Philadelphia	14 A
23 Chi. Bears	28 A
23 Baltimore	14 M
17 Detroit	21 H
24 Detroit	28 A
0 S. Fran.	35 A
27 L. Angeles	35 A

234 251

Packers W. 4, L. 8, T. 0

1955

PACKERS

20 Detroit	17 H
24 Chi. Bears	3 H
20 Baltimore	24 M
30 L. Angeles	28 M
10 Cleveland	41 A
10 Baltimore	14 A
31 Chi. Bears	52 A
31 Cardinals	14 H
27 S. Fran.	21 M
10 Detroit	24 A
28 S. Fran.	7 A
17 L. Angeles	31 A

258 276

Packers W. 6, L. 6, T. 0

1956

PACKERS

16 Detroit	20 H
21 Chi. Bears	37 H
38 Baltimore	33 M
42 L. Angeles	17 M
21 Baltimore	28 A
7 Cleveland	24 M
14 Chi. Bears	38 A
16 S. Fran.	17 H
24 Detroit	20 A
24 Cardinals	21 A
20 S. Fran.	38 A
21 L. Angeles	49 A

264 342

Packers W. 4, L. 8, T. 0

1957

PACKERS

21 Chi. Bears	17 H
14 Detroit	24 H
17 Baltimore	45 M
14 S. Fran.	24 M
24 Baltimore	21 A
17 New York	31 H
14 Chi. Bears	21 A
27 L. Angeles	31 M
27 Pittsburgh	10 A
6 Detroit	18 A
17 L. Angeles	42 A
20 S. Fran.	27 A

218 311

Packers W. 3, L. 9, T. 0

1958

PACKERS

20 Chi. Bears	34 H
13 Detroit	13 H
17 Baltimore	24 M
21 Washington	37 A
38 Philadelphia	35 H
0 Baltimore	56 A
10 Chi. Bears	24 A
7 L. Angeles	20 H
12 S. Fran.	33 M
14 Detroit	24 A
21 S. Fran.	48 A
20 L. Angeles	34 A

193 382

Packers W. 1, L. 10, T. 1



1959

Packers		Attendance
9 Chicago Bears	6 H	(32,150)
28 Detroit	10 H	(32,150)
21 San Francisco	20 H	(32,150)
6 Los Angeles	45 M	(36,194)
21 Baltimore	38 A	(57,557)
3 New York	20 A	(68,837)
17 Chicago Bears	28 A	(46,205)
24 Baltimore	28 M	(25,521)
21 Washington	0 H	(31,853)
24 Detroit	17 A	(49,221)
38 Los Angeles	20 A	(61,044)
36 San Francisco	14 A	(55,997)
248		246

Packers W. 7, L. 5, T. 0

1962

Packers		Attendance
34 Minnesota	7 H	(38,669)
17 St. Louis	0 M	(44,885)
49 Chicago Bears	0 H	(38,669)
9 Detroit	7 H	(38,669)
48 Minnesota	21 A	(41,475)
31 San Francisco	13 M	(46,010)
17 Baltimore	6 A	(57,966)
38 Chicago Bears	7 A	(48,753)
49 Philadelphia	0 A	(60,671)
17 Baltimore	13 H	(38,669)
14 Detroit	26 A	(57,578)
41 Los Angeles	10 M	(46,833)
31 San Francisco	21 A	(53,769)
20 Los Angeles	17 A	(60,389)
515		148

Packers W. 13, L. 1, T. 0

1960

Packers		Attendance
14 Chicago Bears	17 H	(32,150)
28 Detroit	9 H	(32,150)
35 Baltimore	21 H	(32,150)
41 San Francisco	14 M	(39,914)
19 Pittsburgh	13 A	(30,155)
24 Baltimore	38 A	(57,808)
41 Dallas	7 H	(32,094)
31 Los Angeles	33 M	(35,763)
10 Detroit	23 A	(51,123)
41 Chicago Bears	13 A	(46,406)
13 San Francisco	0 A	(53,612)
35 Los Angeles	21 A	(53,445)
332		209

Packers W. 8, L. 4, T. 0

1963

Packers		Attendance
3 Chicago Bears	10 H	(42,327)
31 Detroit	10 M	(45,912)
31 Baltimore	20 H	(42,327)
42 Los Angeles	10 H	(42,327)
37 Minnesota	28 A	(42,567)
30 St. Louis	7 A	(32,801)
34 Baltimore	20 A	(60,065)
33 Pittsburgh	14 M	(46,298)
28 Minnesota	7 H	(42,327)
7 Chicago Bears	26 A	(49,166)
28 San Francisco	10 M	(45,905)
13 Detroit	13 A	(54,016)
31 Los Angeles	14 A	(52,357)
21 San Francisco	17 A	(31,031)
369		206

Packers W. 11, L. 2, T. 1

1961

Packers		Attendance
13 Detroit	17 M	(44,307)
30 San Francisco	10 H	(38,669)
24 Chicago Bears	0 H	(38,669)
45 Baltimore	7 H	(38,669)
49 Cleveland	17 A	(75,049)
33 Minnesota	7 A	(42,007)
28 Minnesota	10 M	(44,116)
21 Baltimore	45 A	(57,641)
31 Chicago Bears	28 A	(49,711)
35 Los Angeles	17 H	(38,669)
17 Detroit	9 A	(55,662)
20 New York	17 M	(47,012)
21 San Francisco	22 A	(55,722)
24 Los Angeles	17 A	(49,169)
391		223

Packers W. 11, L. 3, T. 0

1964

Packers		Attendance
23 Chicago Bears	12 H	(42,327)
20 Baltimore	21 H	(42,327)
14 Detroit	10 A	(59,203)
23 Minnesota	24 H	(42,327)
24 San Francisco	14 M	(47,380)
21 Baltimore	24 A	(60,213)
17 Los Angeles	27 M	(47,617)
42 Minnesota	13 A	(44,278)
30 Detroit	7 H	(42,327)
14 San Francisco	24 A	(38,483)
28 Cleveland	21 M	(48,065)
45 Dallas	21 A	(44,971)
17 Chicago Bears	3 A	(43,636)
24 Los Angeles	24 A	(40,735)
342		245

Packers W. 8, L. 5, T. 1

H — Home A — Away M — Milwaukee

◊ — Non-League game.

58 RESULTS BY SEASON (continued)

1965

Packers	Attendance
41 Steelers	9 A (38,383)
20 Colts	17 M (48,130)
23 Bears	14 H (50,852)
27 49'ers	10 H (50,852)
31 Lions	21 A (56,712)
13 Cowboys	3 M (48,311)
10 Bears	31 A (45,664)
7 Lions	12 H (50,852)
6 Rams	3 M (48,485)
38 Vikings	13 A (47,426)
10 Rams	21 A (39,733)
24 Vikings	19 H (50,852)
42 Colts	27 A (60,238)
24 49'ers	24 A (45,710)

316 224
Packers W. 10, L. 3, T. 1

1966

Packers	Attendance
24 Colts	3 M (48,650)
21 Browns	20 A (83,943)
24 Rams	13 H (50,861)
23 Lions	14 H (50,861)
20 49'ers	21 A (39,290)
17 Bears	0 A (49,573)
56 Falcons	3 M (48,623)
31 Lions	7 A (56,954)
17 Vikings	20 H (50,861)
13 Bears	6 H (50,861)
28 Vikings	16 A (47,426)
20 49'ers	7 M (48,725)
14 Colts	10 A (60,238)
27 Rams	23 A (72,416)

335 163
Packers W. 12, L. 2, T. 0

1967

Packers	Attendance
17 Lions	17 H (50,861)
13 Bears	10 H (50,861)
23 Falcons	0 M (49,467)
27 Lions	17 A (57,877)
7 Vikings	10 M (49,601)
48 Giants	21 A (62,585)
31 Cardinals	23 A (49,792)
10 Colts	13 A (60,238)
55 Browns	7 M (50,074)
13 49'ers	0 H (50,861)
17 Bears	13 A (47,513)
30 Vikings	27 A (47,693)
24 Rams	27 A (76,637)
17 Steelers	24 H (50,861)

332 209
Packers W. 9, L. 4, T. 1

H — Home A — Away M — Milwaukee



'69 Mustang SportsRoof



1969 Ford XL



'69 Torino

Your Ford Dealer's Performance Corner...

The place you've got to go to see what's going on.

Bonneville, Indy, Daytona, Le Mans.
Ford has proven its performance against
the toughest competition in the world.
And the same engineers who stretch their
minds to win on the tracks help to
design the Fords you buy. If you don't
think that makes for winners on the
road . . . visit your Ford Dealer's
Performance Corner and let him prove it!



GREEN BAY PACKERS RESULTS BY SERIES

SHRINE GAME RESULTS

UPPER MIDWEST SHRINE GAMES

Attendance			Attendance		
1950 Packers 16; Colts	14	(17,191)	1960 Packers 35; Bears	21	(35,118)
1951 Packers 10; Eagles	14	(19,282)	1961 Packers 24; Bears	14	(42,560)
1952 Packers 0; Giants	7	(22,000)	1962 Packers 35; Bears	21	(44,326)
1953 Packers 23; Steelers	26	(16,859)	1963 Packers 26; Bears	7	(44,592)
1954 Packers 27; Giants	38	(17,000)	1964 Packers 21; Bears	7	(46,920)
1955 Packers 37; Cardinals	38	(18,000)	1965 Packers 31; Bears	14	(47,066)
1956 Packers 27; Eagles	6	(12,138)	1966 Packers 10; Bears	13	(47,034)
1957 Packers 16; Eagles	13	(17,101)	1967 Packers 18; Bears	0	(47,126)
1958 Packers 0; Steelers	3	(17,294)	1968 Packers 7; Bears	10	(47,127)
1959 Packers 16; Bears	19	(28,286)			

BISHOP'S CHARITIES RESULTS

Attendance			Attendance		
1961 Packers 20; Giants	17	(33,452)	1965 Packers 44; Giants	7	(50,837)
1962 Packers 20; Giants	17	(38,669)	1966 Packers 17; Steelers	6	(50,861)
1963 Packers 24; Giants	17	(42,327)	1967 Packers 31; Steelers	20	(50,861)
1964 Packers 34; Giants	10	(42,327)	1968 Packers 14; Giants	15	(50,861)

PACKERS vs. COLLEGE ALL-STARS (CHICAGO)

1937 — PACKERS, 0; ALL-STARS,	6
1940 — PACKERS, 45; ALL-STARS,	28
1945 — PACKERS, 19; ALL-STARS,	7
1962 — PACKERS, 42; ALL-STARS,	20
1963 — PACKERS, 17; ALL-STARS,	20
1966 — PACKERS, 38; ALL-STARS,	0
1967 — PACKERS, 27; ALL-STARS,	0
1968 — PACKERS, 34; ALL-STARS,	17

PACKERS vs. PROFESSIONAL ALL-STARS

(Played at Los Angeles)
1939 — PACKERS, 16; ALL-STARS, 7

W. DIV. PLAY-OFF PACKERS vs. COLTS (G.B.)

1941 — PACKERS, 14; BEARS, 33	(43,425)
1965 — PACKERS, 13; COLTS, 10	(50,861)
1967 — PACKERS, 28; RAMS, 7, at Milw.	(48,861)

GREEN BAY'S PLAY-OFF RECORD

1929	12 Wins	0 Defeats	1 Tie
1930	10 Wins	3 Defeats	1 Tie
1931	12 Wins	2 Defeats	0 Ties
1936 — Packers	21 — Boston Redskins	6 — at New York	(29,545)
1938 — Giants	23 — Packers	17 — at New York	(48,120)
1939 — Packers	27 — Giants	0 — at Milwaukee	(32,279)
1944 — Packers	14 — Giants	7 — at New York	(46,016)
1960 — Eagles	17 — Packers	13 — at Philadelphia	(67,325)
1961 — Packers	37 — Giants	0 — at Green Bay	(39,029)
1962 — Packers	16 — Giants	7 — at New York	(64,892)
1965 — Packers	23 — Cleveland	12 — at Green Bay	(50,777)
1966 — Packers	34 — Dallas	27 — at Dallas	(74,152)
1967 — Packers	21 — Dallas	27 — at Green Bay	(50,861)

AFL-NFL TITLE GAME

1966 — Packers	35 — Kansas City	10 — at Los Angeles	(63,036)
1967 — Packers	33 — Oakland	14 — at Miami	(75,546)

GREEN BAY PACKERS FIRST DRAFT CHOICE

Year	Name	Position	School
1936	Russ Letlow	Guard	U. of San Francisco
1937	Eddie Jankowski	Fullback	U. of Wisconsin
1938	Cecil Isbell	Halfback	U. of Purdue
1939	Larry Buhler	Halfback	U. of Minnesota
1940	Hal Van Every	Halfback	U. of Minnesota
1941	George Paskvan	Fullback	U. of Wisconsin
1942	Urban Odson	Tackle	U. of Minnesota
1943	Richard Wildung	Tackle	U. of Minnesota
1944	Merv Pregulman	Center	U. of Michigan
1945	Walter Schlinkman	Fullback	Texas Tech
1946	John Strzykalski	Halfback	U. of Marquette
1947	Ernie Case	Quarterback	U.C.L.A.
1948	Earl (Jug) Girard	Halfback	U. of Wisconsin
1949	Stanley Heath	Quarterback	U. of Nevada
1950	Clayton Tonnemaker	Center	U. of Minnesota
1951	Robert Gain	Tackle	U. of Kentucky
1952	Vito (Babe) Parilli	Quarterback	U. of Kentucky
1953	Al Carmichael	Halfback	U. of S. California
1954	Art Hunter	Tackle	Notre Dame
1955	Tom Bettis	Linebacker	U. of Purdue
1956	Jack Losch	Halfback	U. of Miami
1957	Paul Hornung*	Quarterback	Notre Dame
1957	Ron Kramer	End	Michigan
1958	Dan Currie	Center	Michigan State
1959	Randy Duncan	Quarterback	Iowa
1960	Tom Moore	Halfback	Vanderbilt
1961	Herb Adderley	Halfback	Michigan State
1962	Earl Gros	Fullback	L.S.U.
1963	Dave Robinson	End	Penn State
1964	Lloyd Voss	Tackle	Nebraska
1965	Donnie Anderson	Halfback	Texas Tech
1965	Larry Elkins	End	Baylor
1966	Gale Gillingham	Tackle	Minnesota
1966	Jim Grabowski	Fullback	Illinois
1967	Bob Hyland	Center, Guard	Boston College
1967	Don Horn	Quarterback	San Diego State
1968	Fred Carr	Linebacker, Tight End	U. Tex. at El Paso
1968	Bill Lueck	Guard	Arizona

*Bonus choice

Get with the Going Thing. Ford '69

GREEN BAY PACKERS

DRAFT SELECTIONS FOR 1968

	Pos.	Ht.	Wt.	Age	School
1. Carr, Fred (Choice from New Orleans)	LB-TE	6-5	238	22	Texas U., El Paso
1. Lueck, Bill	OG	6-3	235	22	Arizona
3. Stevens, Bill (Choice from St. Louis)	QB	6-3	195	23	Texas U., El Paso
3. Himes, Dick	OT	6-4	244	22	Ohio State
4. McCarthy, Brendan (Choice from Pittsburgh)	FB	6-3	217	23	Boston College
4. Robinson, John	FL	6-2	196	22	Tennessee A & I
5. Duich, Steve (Choice from Pittsburgh)	OT	6-3	248	22	San Diego State
5. Winkler, Francis	DE	6-3	230	22	Memphis State
6. Chadwick, Walt	OHB	6-0	205	22	Tennessee
7. Beath, Andy	DHB	6-2	192	22	Duke
8. Owens, Tom	OG	6-3	240	22	Missouri U., Rolla
9. Apisa, Bob	FB	6-2	225	22	Michigan State
10. Cash, Richard (Choice from N. Y. Giants)	DT	6-5	260	23	Northeast Missouri
10. Worthen, Ron	C	6-5	235	22	Arkansas State
11. Rule, Gordon	DHB	6-2	180	22	Dartmouth
12. Porter, Dennis	DT	6-4	242	22	Northern Michigan
13. Geiselman, Frank	FL	6-2	207	22	Rhode Island
14. Farler, John	TE	6-1	208	22	Colorado
15. Gibson, Ridley	DS	6-2	200	22	Baylor
16. Groves, Alvin	DT	6-4	270	22	St. Norbert
17. Rota, Ken	OHB	6-0	200	22	N. Dakota State



GREEN BAY PACKERS PRE-SEASON RESULTS

1954

PACKERS	OPP.	LOCATION
10 Cardinals	27	at Minneapolis
13 Browns	14	at Green Bay
36 Steelers	14	at Pittsburgh
13 Eagles	24	at Hershey, Pa.
31 Redskins	3	at Raleigh, N. C.
28 Giants	38	at Milwaukee

1955

PACKERS	OPP.	LOCATION
31 Giants	24	at Spokane, Wash.
7 Browns	13	at Akron, Ohio
14 Steelers	16	at Green Bay
10 Eagles	24	at Charleston, W. Va.
31 Redskins	33	at Winston-Salem
37 Cardinals	28	at Milwaukee

1956

PACKERS	OPP.	LOCATION
27 Eagles	6	at Milwaukee
17 Giants	13	at Green Bay
21 Browns	20	at Cleveland
17 Redskins	10	at Winston-Salem
29 Cardinals	21	at St. Louis

1957

PACKERS	OPP.	LOCATION
20 Cardinals	16	at Miami, Fla.
17 Cardinals	14	at Austin, Tex.
16 Eagles	13	at Milwaukee
13 Giants	10	at Boston, Mass.
21 Redskins	14	at Winston-Salem
10 Steelers	10	at Minneapolis

1958

PACKERS	OPP.	LOCATION
0 Steelers	3	at Milwaukee
20 Eagles	17	at Green Bay
41 Giants	20	at Boston, Mass.
14 Redskins	23	at Winston-Salem
24 Cardinals	31	at Minneapolis

1959

PACKERS	OPP.	LOCATION
16 Bears	19	at Milwaukee
24 49'ers	17	at San Francisco
45 Eagles	28	at Portland, Ore.
0 Giants	14	at Bangor, Maine
20 Redskins	13	at Winston-Salem
13 Steelers	10	at Minneapolis

1960

PACKERS	OPP.	LOCATION
20 Steelers	13	at New Orleans, La.
16 Giants	7	at Jersey City, N. J.
35 Bears	7	at Milwaukee
35 Cardinals	14	at Green Bay
28 Cowboys	23	at Minneapolis
41 Redskins	7	at Winston-Salem

1961

PACKERS	OPP.	LOCATION
30 Dallas	7	at Dallas
31 Cardinals	7	at St. Louis
24 Bears	14	at Milwaukee
20 Giants	17	at Green Bay
31 Redskins	24	at Columbus, Ga.

1962

PACKERS	OPP.	LOCATION
42 All-Stars	20	at Chicago
31 Cowboys	7	at Dallas
41 Cardinals	14	at Jacksonville, Fla.
35 Bears	21	at Milwaukee
20 Giants	17	at Green Bay
20 Redskins	14	at Columbus, Ga.

1963

PACKERS	OPP.	LOCATION
17 All-Stars	20	at Chicago
27 Steelers	7	at Miami
31 Cowboys	10	at Dallas
26 Bears	7	at Milwaukee
24 Giants	17	at Green Bay
28 Redskins	17	at Cedar Rapids

1964

PACKERS	OPP.	LOCATION
7 Cardinals	20	at New Orleans
24 Giants	10	at Green Bay
21 Bears	7	at Milwaukee
35 Cowboys	3	at Dallas
17 Browns	20	at Cleveland

1965

PACKERS	OPP.	LOCATION
44 N. Y. Giants	7	at Green Bay
34 Bears	14	at Milwaukee
12 Cowboys	21	at Dallas
30 Cleveland	14	at Cleveland
31 Cardinals	13	at Green Bay

1966

PACKERS	OPP.	LOCATION
38 All-Stars	0	at Chicago
10 Bears	13	at Milwaukee
3 Cowboys	21	at Dallas
17 Steelers	6	at Green Bay
37 Giants	10	at Milwaukee

1967

PACKERS	OPP.	LOCATION
27 All-Stars	0	at Chicago
31 Pittsburgh	20	at Green Bay
18 Bears	0	at Milwaukee
20 Cowboys	3	at Dallas
30 Browns	21	at Cleveland
31 Giants	14	at Green Bay

1968

PACKERS	OPP.	LOCATION
34 All-Stars	17	at Chicago
14 Giants	15	at Green Bay
7 Bears	10	at Milwaukee
31 Cowboys	27	at Dallas
21 Steelers	17	at Milwaukee
31 Browns	9	at Cleveland

1967 GREEN BAY PACKERS

GAME BY GAME OFFENSIVE STATISTICS

	SCORES GB-OPP	TOTAL FIRST DOWNS	FIRST DOWNS RUSHING	FIRST DOWNS PASSING	FIRST DOWNS PENALTY	TOTAL NET YARDS GAINED	YARDS GAINED RUSHING (NET)	YARDS GAINED PASSING (NET)	PASSES ATTEMPTED	PASSES COMPLETED	HAD INTERCEPTED	PUNTS	AVERAGE DISTANCE PUNTS	PENALTIES	YARDS PENALTIES	RUSHING PLAYS	TOTAL PLAYS	AVERAGE GAIN PER RUSH	AVERAGE GAIN PER PASS ATTEMPT	AVERAGE GAIN PER OFFENSE PLAY	
PRE-SEASON:																					
ALL-STARS	27-0	7	17	3	425	121	304	35	24	1	2	40.0	6	53	37	72	4.4	8.7	5.9		
STEELERS	31-20	5	10	3	363	125	238	21	13	0	3	43.7	7	67	31	53	4.0	11.0	7.0		
BEARS	18-0	3	6	2	157	65	92	22	11	0	5	38.0	2	20	27	54	2.5	4.2	3.0		
COWBOYS	20-3	9	9	1	275	140	135	22	12	0	5	40.0	1	10	38	63	3.7	7.1	4.3		
BROWNS	30-21	8	7	2	314	135	179	23	12	2	2	40.0	5	57	39	64	3.5	7.8	5.0		
GIANTS	31-14	9	13	1	388	132	256	26	18	1	3	39.7	6	69	28	56	4.7	10.0	7.0		
LEAGUE:																					
LIONS (M)	17-17	13	4	9	0	306	43	263	23	14	4	54	43.0	3	38	20	50	2.1	11.4	6.1	
BEARS (M)	13-10	24	14	8	2	365	233	132	20	11	5	0	2	20	51	71	4.6	6.6	5.1		
FALCONS (M)	23-0	23	12	10	1	382	177	205	34	17	2	4	37.2	3	25	38	74	4.8	6.1	5.2	
LIONS (A)	27-17	16	7	8	1	249	118	131	19	12	2	6	41.8	3	37	45	66	2.6	6.2	3.6	
VIKINGS (M)	7-10	10	2	7	1	268	42	226	25	15	3	7	43.1	2	10	26	53	1.7	9.0	5.0	
GIANTS (A)	48-21	28	19	7	2	397	249	148	21	9	0	4	36.5	3	35	45	68	5.5	7.0	5.8	
CARDINALS (A)	31-23	16	7	9	0	246	129	117	26	11	2	6	38.5	5	29	24	50	5.3	4.5	4.9	
COLTS (A)	10-13	15	6	8	1	265	126	139	25	16	1	9	31.5	5	72	25	56	5.0	5.6	4.7	
BROWNS (M)	55-7	28	15	11	2	456	235	221	24	15	1	1	35.0	4	58	45	73	5.2	9.2	6.2	
49'ers (H)	13-0	13	6	7	0	297	168	129	26	13	1	5	38.0	1	5	36	64	4.7	4.9	4.6	
BEARS (A)	17-13	15	4	8	3	245	71	174	17	11	0	5	34.3	3	35	29	48	2.4	10.2	5.1	
VIKINGS (A)	30-27	15	10	4	1	276	133	143	15	10	1	3	32.6	2	20	32	52	4.2	12.7	5.3	
RAMS (A)	24-27	12	5	6	1	218	98	120	20	10	2	6	28.3	2	38	32	55	3.1	6.9	4.0	
STEELERS (H)	17-24	15	4	10	1	309	93	216	36	18	3	6	35.2	6	68	26	66	3.6	6.0	4.7	
POST-SEASON:																					
RAMS (M)	28-7	20	11	8	1	374	163	211	23	17	1	5	32.6	7	44	45	69	3.6	9.0	5.8	
DALLAS (H)	21-17	18	5	10	3	195	80	115	24	14	0	8	29.0	2	10	32	64	2.5	4.8	3.1	
OAKLAND (M)	33-14	19	11	7	1	325	163	162	24	13	0	6	39.0	1	12	41	69	4.0	5.8	4.7	

Your Ford Dealer's: the place you've got to go to see what's going on!

1967

GREEN BAY PACKERS

GAME BY GAME DEFENSIVE STATISTICS

	SCORES GB-OPP	OPPONENT FIRST DOWNS	FIRST DOWNS RUSHING	FIRST DOWNS PASSING	FIRST DOWNS PENALTY	TOTAL NET YARDS ALLOWED	NET YARDS ALLOWED RUSHING	NET YARDS ALLOWED PASSING	OPPONENT QB. THROWN YARDS LOST	PASSES ATTEMPTED	PASSES COMPLETED	OPPONENT PASSES INTERCEPTED	YARDS RETURNED	OPPONENT YARDS GAINED PER PASS ATTEMPT	OPPONENT RUSH PLAYS	OPPONENT YARDS PER RUSH	TOTAL OPPONENT PLAYS	OPPONENT YARDS PER OFFENSIVE PLAY
PRE-SEASON:																		
ALL-STARS	27-0	10	4	4	2	136	33	103		28	12	1	0	3.7	27	1.2	55	2.5
STEELERS	31-20	16	5	7	4	316	150	166	2	11	28	11	1	88	6.0	34	4.6	5.0
BEARS	18-0	13	9	4	0	150	140	10	8	84	18	8	2	16	0.6	34	4.0	60
COWBOYS	20-3	16	10	5	1	314	156	158	6	39	28	13	1	22	7.0	28	5.6	2.5
BROWNS	30-21	19	6	11	2	323	128	195	4	23	36	19	3	23	6.1	25	5.1	4.8
GIANTS	31-14	16	9	4	3	267	139	128	0	23	8	3	6	5.5	35	4.0	58	4.5
LEAGUE:																		
LIONS (M)	17-17	10	8	1	1	233	192	41	0	0	17	7	0	0	2.4	39	4.9	4.4
BEARS (M)	13-10	6	5	1	0	159	140	19	1	4	12	5	1	24	1.6	30	4.7	3.7
FALCONS (M)	23-0	8	2	5	1	58	39	19	8	81	23	12	2	48	1.0	19	2.0	5.0
LIONS (A)	27-17	7	2	4	1	122	63	59	5	38	24	10	3	71	2.0	18	3.6	2.4
VIKINGS (M)	7-10	10	8	2	0	183	158	25	0	0	11	2	2	12	2.3	45	3.5	3.3
GIANTS (A)	48-21	20	10	9	1	324	143	181	2	22	28	14	3	18	6.4	30	4.7	5.7
CARDINALS (A)	31-23	19	8	11	0	405	116	289	3	28	19	2	12	10.0	37	3.1	69	5.9
COLTS (A)	10-13	17	8	8	1	237	134	103	3	23	33	15	1	0	4.1	35	3.8	3.3
BROWNS (M)	55-7	11	7	4	0	228	162	66	3	31	22	7	4	38	3.0	21	7.0	5.0
49'ers (H)	13-0	16	7	9	0	308	140	168	1	2	49	2	25	2.7	26	5.4	76	4.0
BEARS (A)	17-13	14	11	3	0	236	180	56	0	0	14	7	2	26	4.0	37	4.8	4.6
VIKINGS (A)	30-27	15	8	5	2	276	219	57	2	33	17	8	1	5	5.2	38	5.7	4.8
RAMS (A)	24-27	20	8	12	0	324	102	222	1	5	36	20	2	17	6.3	34	3.0	4.6
STEELERS (H)	17-24	10	6	4	0	194	122	72	0	0	21	12	1	7	3.4	33	3.8	3.6
POST-SEASON:																		
RAMS (M)	28-7	12	2	9	1	217	75	142	5	44	31	11	1	20	4.7	28	2.7	3.4
DALLAS (H)	21-17	11	4	6	1	192	92	100	1	9	26	11	1	15	3.8	33	2.8	3.2
OAKLAND (M)	33-14	16	5	10	1	291	105	186	3	22	34	15	1	60	5.0	20	5.2	5.1

Exclusive! All '69 Ford Wagons with new 3-way Magic Door-Gate

GREEN BAY PACKERS ALL-TIME ROSTER 1921-1968

Player — Position	College	Years	Player — Position	College	Years
Abersson, Cliff (B)	No College	1946	Bray, Ray (G)	W. Michigan	52
Abrams, Nate (E)	No College	21	Brennan, John (G)	Michigan	39
Abramson, Geo. (T)	Minnesota	25	Brock, Charley (C)	Nebraska	39-47
Adams, Chet (T)	Ohio	42-43	Broek, Lou (B)	Purdue	40-45
Adderley, Herb (B)	Mich. St.	61-68	Brown, Allen (E)	Mississippi	66-67
Adkins, Bob (B)	Marshall	40-41, 45-46	Brown, Bill (G)	Arkansas	53-56
Afflis, Dick (G)	Nevada	51-54	Brown, Bob (T-E)	Ark. AM&N	66-68
Aggajanian, Ben (K)	New Mexico	1961	Brown, Tim (B)	Ball St.	59
Albrecht, Art (T)	Wisconsin	41	Brown, Tom (HB)	Maryland	64-68
Aldridge, Ben (B)	Okla. A&M	53	Bruder, Hank (B)	N'thwestern	31-39
Aldridge, Lionel (DE)	Utah State	63-68	Bucchianeri, Mike (G)	Indiana	41, 44-45
Amundsen, Norm (G)	Wisconsin	57	Buck, Cub (T)	Wisconsin	21-25
Anderson, Bill (E)	Tennessee	65-66	Buhler, Larry (B)	Minnesota	39-41
Anderson, Don (B)	Tex. Tech	66-67	Buland, Walt (T)	No College	24
Apsit, Marger (B)	So. Calif.	32	Bullough, Hank (G)	Mich. State	55, 58
Ashmore, Roger (T)	Gonzaga	28-29	Bultman, Art (C)	Marquette	32-34
Bailey, Byron (B)	Wash. St.	53	Burris, Paul (G)	Oklahoma	49-51
Baker, Frank (E)	N'thwestern	31	Butler, Frank (C)	Mich. State	34-36, 38
Baker, Roy (B)	So. Calif.	28-29	Butler, Bill (B)	Chattanooga	59
Balaz, Frank (B)	Iowa	39-41	Caffey, Lee Roy (LB)	Texas A&M	64-68
Baldwin, Al (E)	Arkansas	50	Cahoon, Ivan (T)	Gonzaga	26-29
Banet, Herb (B)	Manchester	37	Canadeo, Tony (B)	Gonzaga	41-43, 46-52
Barnes, Emery (E)	Oregon	56	Cannava, Al (B)	Boston Col.	50
Barnes, Gary (E)	Clemson	62-63	Capp, Dick (LB)	Boston College	67
Barnett, Solon (T)	Baylor	45-46	Capuzzi, Jim (B)	Cincinnati	55-56
Barrager, Nate (C)	So. Calif.	31-35	Carr, Fred (LB)	UTEP	68
Barrett, Jan (E)	Fresno State	63	Carroll, Leo (DE)	San Diego	68
Barry, Al (G)	So. Calif.	54, 57	Carey, Joe (G)	No College	21
Barry, Norm (B)	Notre Dame	21	Carlson, Irv (G)	St. John	26
Barton, Don (B)	Texas	53	Carmichael, Al (B)	Southern Cal	53-58
Basing, Myrt (B)	Lawrence	23-27	Carpenter, Lew (B)	Arkansas	59-63
Baxter, Lloyd (T)	SMU	48	Carter, Joe (E)	SMU	42
Beasley, John (B)	So. Dakota	24	Casper, Charley (B)	TCU	34
Beck, Ken (T)	Texas A&M	59	Chandler, Don (K)	Florida	65-67
Becker, Wayland (E)	Marquette	36-38	Christman, Paul (B)	Missouri	50
Bell, Ed (G)	Indiana	47-49	Cifelli, Gus (T)	Notre Dame	53
Bennett, Earl (G)	H. Simmons	46	Cifers, Bob (B)	Tennessee	49
Berezney, Paul (T)	Fordham	42-44	Claridge, Dennis (QB)	Nebraska	64
Berrang, Ed (E)	Villanova	52	Clemens, Cal (B)	So. Calif.	36
Berry, Connie (E)	N. Carolina State	40	Clemens, Bob (B)	Georgia	55
Bettencourt, L. (C)	St. Mary's	33	Clemens, Ray (G)	St. Mary's	47
Bettis, Tom (LB)	Purdue	55-61	Cloud, Jack (B)	Will. & Mary	50-51
Bilda, Dick (B)	Marquette	44	Cody, Ed (B)	Purdue	47-48
Biolo, John (G)	Lake Forest	39	Collins, Al (B)	LSU	51
Blaine, Ed (G)	Missouri	62	Comp, Irv (B)	St. Benedict	43-49
Bloodgood, El (B)	Nebraska	30	Comstock, Rudy (G)	Georgetown	31-33
Boedeker, Bill (B)	Kalamazoo	50	Cone, Fred (B)	Clemson	51-57
Boerig, Chuck (LB)	Illinois	52	Cook, Jim (G)	Wisconsin	21
Bookout, Billy (B)	Austin	55-56	Cook, Ted (E)	Alabama	48-50
Boone, J. R. (B)	Tulsa	53	Coughlin, Frank (B)	Notre Dame	21
Borak, Fritz (E)	Creighton	38	Coutre, Larry (B)	Notre Dame	50, 53
Borden, Nate (E)	Indiana	55-59	Craig, Larry (B)	So. Carolina	39-49
Bowdoin, Jim (G)	Alabama	28-32	Cremer, Ted (E)	Auburn	48
Bowman, Ken (C)	Wisconsin	64-68	Crenshaw, Leon (DT)	Tuskegee	68
Brackins, Chas. (B)	Prairie View	55	Crimmins, Bernie (G)	Notre Dame	45
Bratkowski, Zeke (QB)	Georgia	63-68	Croft, Milburn (T)	Ripon	42-47
			Cronin, Tom (B)	Marquette	22
			Crowley, Jim (B)	Notre Dame	25
			Crutcher, Tommy (LB)	TCU	64-67
			Cuff, Ward (B)	Marquette	47

Torino pours it on. More power than ever in '69.

Player — Position	College	Years	Player — Position	College	Years
Culver, Al (T)	Notre Dame	32	Felker, Art (E)	Marquette	51
Currie, Dan (LB)	Mich. State	58-64	Ferguson, Howie (B)	No College	53-58
Curry, Bill (LB)	Georgia Tech	65-66	Ferry, Lou (T)	Villanova	49
Cvercko, Andy (G)	N'thwestern	60	Finley, Jim (G)	Mich. State	42
Cyre, Hector (T)	Gonzaga	26-28	Finnin, Tom (T)	Detroit	57
Dahms, Tom (T)	San Diego St.	55	Fitzgibbons, Paul (B)	Creighton	30-32
Dale, Carroll (E)	Va. Tech.	65-68	Flaherty, Dick (E)	Marquette	26-27
Daniell, Averell (T)	Pittsburgh	37	Flanigan, Jim (LB)	Pitt.	67-68
Danjean, Ernie (G)	Auburn	57	Fleming, Marv (E)	Utah	63-68
Darling, Bernard (C)	Beloit	27-31	Flowers, Bob (C)	Texas Tech	42-48
Davenport, Bill (B)	H. Simmons	31	Floyd, Bobby J. (B)	TCU	52, 54
Davidson, Ben (T)	Washington	61	Folkins, Lee (E)	Washington	61
Davis, Harper (B)	Miss. State	51	Ford, Len (E)	Michigan	58
Davis, Paul (G)	Marquette	22	Forester, Bill (LB)	SMU	53-63
Davis, Ralph (G)	Wisconsin	47-48	Forte, Aldo (G)	Montana	47
Davis, Willie (E)	Grambling	60-68	Forte, Bob (B)	Arkansas	46-53
Dawson, Gib (B)	Texas	53	Francis, Joe (B)	Oregon St.	58-59
Deeks, Don (B)	Texas	48	Frankowski, Bob (G)	Washington	45
Dees, Bob (T)	Missouri SW	52	Franta, Herb (T)	St. Thomas	30
Deschaine, Dick (E)	No College	55-57	Freeman, Bob (B)	Auburn	59
Dillon, Bobby (B)	Texas	52-59	Fries, Sherwood (G)	Colorado St.	43
Dilweg, Lavvie (E)	Marquette	27-34	Fritsch, Ted (B)	Stevens Pt.	42-50
DiPietro, Ray (G)	Ohio State	50-51	Frutig, Ed (E)	Michigan	41-45
Disend, Leo (T)	Albright	40	Gantenbein, Milt (B)	Wisconsin	31-40
Dittrich, John (G)	Wisconsin	59	Gardella, Aug. (B)	Holy Cross	22
Doncarlos, J. (C)	Drake	31	Gardner, Milt (G)	Wisconsin	22-26
Douglas, George (C)	Marquette	21	Garrett, Bob (B)	Stanford	54
Dowden, Steve (T)	Baylor	52	Gassert, Ron (T)	Virginia	62
Dowler, Boyd (E)	Colorado	59-68	Gatewood, Lester (B)	Baylor	46-47
Dryer, Wally (B)	Wisconsin	50-51	Gavin, Fritz (E)	Marquette	21, 23
Drulis, Chuck (G)	Temple	50	Gillette, Jim (B)	Virginia	47
Duford, Wilfred (B)	Marquette	24	Gillingham, Gale (G)	Minnesota	66-68
Duhart, Paul (B)	Florida	44	Girard, Jug (B)	Wisconsin	48-50
Dumoe, Bill (E)	Beloit	21	Glick, Eddie (B)	Marquette	21-22
Dunaway, Dave (E)	Duke	68	Goldenberg, Chas. (G)	Wisconsin	33-45
Dunn, Red (B)	Marquette	27-31	Goodnight, Clyde (E)	Tulsa	45-49
Dunnigan, Walt (E)	Minnesota	22	Gordon, Lou (T)	Illinois	36-37
Earhart, Ralph (B)	Texas Tech	48-49	Gorgal, Ken (B)	Purdue	56
Earpe, Jug (C)	Monmouth	22-32	Grabowski, Jim (B)	Illinois	66-68
Eason, Roger (T)	Oklahoma	49	Greeney, Norm (G)	Notre Dame	33
Ecker, Ed (T)	John Carroll	50-51	Greenfield, Tom (C)	Arizona	39-41
Elliott, Burton (B)	Marquette	21	Gregg, Forrest (T)	SMU	56, 58-68
Elliott, Carleton (E)	Virginia	51-54	Gremminger, Hank (B)	Baylor	56-65
Engbreitsen, Tiny (G)	N'thwestern	34-41	Griffin, Harold (C)	Iowa	28
Engelmann, W. (B)	So. Dakota St.	30-33	Grimes, Billy (B)	Okla. A&M	50-52
Enright, Rex (B)	Notre Dame	26-27	Grimm, Dan (G)	Colorado	63
Erickson, Harry (B)	Wash-Jeff	23	Gros, Earl (B)	LSU	62-63
Ethridge, Joe (T)	SMU	49	Grove, Roger (B)	Mich. State	31-35
Evans, John (B)	California	29	Gudauskas, Pete (G)	Murray St.	42, 45
Evans, Lon (G)	TCU	33-37	Hackbart, Dale (B)	Wisconsin	60
Evans, Dick (E)	Iowa	40, 43	Hanner, Dave (T)	Arkansas	52-64
Falkenstein, Tony (B)	St. Mary's	43	Hanny, Frank (T)	Indiana	30
Faverty, Hal (C)	Wisconsin	52	Hanson, Roy (B)	Marquette	23
Faye, Allen (E)	Marquette	22	Harding, Roger (C)	California	49
Feathers, Beattie (B)	Tennessee	40	Hart, Doug (DB)	Arlington St.	64-68
			Harris, John (B)	Minnesota	30
			Hathcock, Dave (B)	Memphis State	66
			Haycraft, Ken (E)	Wisconsin	64-66

ALL-TIME ROSTER

Player — Position	College	Years	Player — Position	College	Years
Hayes, Norb (E)	Marquette	23	Keuper, Ken (B)	Georgia	45-47
Hays, Dave (E)	Notre Dame	21-22	Kiesling, Walt (T)	St. Thomas	35-36
Hays, George (E)	St. Bonaventure	23	Kilbourn, Warren (T)	Michigan	39
Hearden, Len (B)	Ripon	24	Kimmel, J. D. (T)	Houston	58
Hearden, Tom (B)	Notre Dame	27-28	Kinard, Bill (B)	Mississippi	57-58
Heath, Stan (B)	Nevada	49	King, Don (T)	Kentucky	56
Held, Paul (B)	San Diego St.	55	Kirby, John (B)	So. Calif.	49
Helluin, Jerry (T)	Tulane	55-57	Klaus, Fee (C)	No College	21
Hendrian, Warren (B)	Pittsburgh	24	Kliebhan, Adolph (B)	Milwaukee Trs.	21
Henry, Urban (T)	Georgia Tech	63	Knafelc, Gary (E)	Colorado	54-62
Herber, Arnie (B)	Regis	31-41	Knudson, Gene (E)	Michigan	54-56
Hickman, Larry (B)	Baylor	60	Kostelnik, Ron (T)	Cincinnati	61-68
Hill, Don (B)	Stanford	29	Kotal, Eddie (B)	Lawrence	25-29
Himes, Dick (T)	Ohio St.	68	Kovatch, John (E)	Notre Dame	47
Hinkle, Clarke (B)	Bucknell	34-41	Kramer, Jerry (G)	Idaho	58-68
Hinte, Tex (E)	Pittsburgh	41	Kramer, Ron (E)	Michigan	57, 59-64
Holler, Ed (LB)	USC	63	Kranz, Ken (B)	Milwaukee Trs.	49
Horn, Don (QB)	San Diego St.	67	Kresky, Joe (G)	Wisconsin	30
Hornung, Paul (B)	Notre-D	57-62, 64-66	Kuick, Stan (G)	Beloit	26
Howard, Lynn (B)	Indiana	21-22	Kurth, Joe (T)	Notre Dame	33-34
Howell, John (B)	Nebraska	38	Kuusisto, Bill (G)	Minnesota	41-46
Howton, Bill (E)	Rice	52-58	Ladrow, Wally (B)	No College	21
Hubbard, Cal (T)	Geneva	29-35	Lambeau, curly (B)	Notre Dame	21-30
Hunter, Art (C)	Notre Dame	54	Lande, Cliff (E)	Carroll	21
Hutson, Don (E)	Alabama	35-45	Lankas, Jim (B)	St. Mary's	43
Hyland, Bob (C)	Boston College	67-68	Larson, Fred (C)	Notre Dame	25
Iman, Ken (C)	SE Missouri	60-63	Lauer, John (B)	Detroit	22
Ingalls, Bob (C)	Michigan	42	Lauer, Larry (C)	Alabama	56-57
Isbell, Cecil (B)	Purdue	38-42	Lawrence, Jim (B)	TCU	39
Jacobs, Allen (B)	Utah	65	Laws, Joe (B)	Iowa	34-45
Jacobs, Jack (B)	Oklahoma	47-49	Leaper, Wesley (E)	Wisconsin	21, 23
Jacunski, Harry (E)	Fordham	39-44	Lee, Bill (T)	Alabama	37-42, 46
James, Claudis (FL)	Jackson St.	67-68	Lester, Darrell (C)	TCU	37-38
Jankowski, Eddie (B)	Wisconsin	37-41	Letlow, Russ (G)	S. Francisco	36-42, 46
Jansante, Val (E)	Duquesne	51	Lewellen, Verne (B)	Nebraska	24-32
Jean, Walter (G)	Missouri	25-26	Lidberg, Carl (B)	Minnesota	26-30
Jenison, Ray (T)	So. Dakota	31	Lipscomb, Paul (T)	Tennessee	45-49
Jennings, Jim (E)	Missouri	55	Logan, Dick (T)	Ohio State	52-53
Jeter, Bob (E)	Iowa	63-68	Lollar, George (B)	Howard	28
Johnson, Glen (T)	Arizona St.	49	Long, Bob (E)	Wichita	64-67
Johnson, Howard (G)	Georgia	40-41	Loomis, Ace (B)	Wisconsin St.	51-53
Johnson, Joe (B)	Boston Col.	54-58	Losch, John (B)	Miami (Fla.)	56
Johnson, Marv (B)	San Jose St.	52-53	Lucky, Bill (T)	Baylor	55
Johnson, Tom (T)	Michigan	52	Ludtke, Norm (G)	Carroll	24
Johnson, Bill (E)	Minnesota	41	Lueck, Bill (OG)	Ariz.	68
Johnson, Chester (B)	Marquette	34-39	Luhn, Nolan (E)	Tulsa	45-49
Johnstone, Art (B)	Lawrence	31	Lyle, Dewey (E)	Minnesota	22-23
Jones, Bruce (C)	Alabama	27-28	Lyman, Del (T)	UCLA	41
Jones, Bob (G)	Indiana	34	MacAuliffe, John (B)	Beloit	26
Jones, Tom (G)	Bucknell	38	McCrory, Hurdis (B)	Georgia	29-33
Jordan, Henry (T)	Virginia	59-68	McDougal, Bob (B)	Miami (Fla.)	47
Jorgenson, Carl (T)	St. Mary's	34	McDowell, John (G)	St. John's	64
Kahler, Bob (B)	Nebraska	41-44	McGaw, Walter (G)	Beloit	26
Kahler, Royal (T)	Nebraska	42	McGeary, Clink (T)	No. Dakota	50
Katalinas, Leo (T)	Catholic U.	38	McGee, Max (E)	Tulane	54, 57-67
Keane, Jim (E)	Iowa	52	McHan, Lamar (B)	Arkansas	59-60
Keefe, Emmett (T)	Notre Dame	21	McIlhenny, Don (B)	SMU	57-59
Kekeris, Jim (T)	Missouri	48	McKay, Roy (B)	Texas	45-47
Kell, Paul (T)	Notre Dame	39-40	McLaughlin, Lee (G)	Virginia	41
Kelley, Bill (E)	Texas Tech	23	McLean, Ray (B)	No College	21
Kenyon, Crowell (G)	Ripon	44	McNally (Blood), John (B)	St. John	28-36
Kercher, Bob (E)	Georgetown	49	McPartland, Bill (T)	Texas	47
Kern, Bill (T)	Pittsburgh	29-30	McPherson, For. (T)	Nebraska	43-45

Most valuable player: Mustang, a No. 1 seller on the big Ford team!

Player — Position	College	Years	Player — Position	College	Years
Mack, "Red" (E)	Notre Dame	66	Olsen, Ralph (E)	Utah	49
Maddox, George (T)	Kansas St.	35	Olsonoski, Larry (G)	Minnesota	48-49
Malone, Grover (B)	Notre Dame	21	O'Malley, Bob (B)	Cincinnati	50
Manley, Leon (G)	Oklahoma	50-51	Orlich, Dan (E)	Nevada	49-51
Mann, Bob (E)	Michigan	50-54	Owens, Henry (G)	Lake Forest	22
Marks, Larry (B)	Indiana	28	Palumbo, Sam (G)	Notre Dame	57
Marshall, Rich (T)	Stephen F. Austin	65	Pannell, Ernie (T)	Texas A&M	41-42, 45
Martell, Herman (E)	No College	21	Pape, Orrin (B)	Iowa	30
Martinkovic, John (E)	Xavier	51-56	Papit, John (B)	Virginia	53
Mason, Joel (E)	W. Michigan	41-45	Parilli, Babe (B)	Kentucky	52-53, 56-58
Massey, Carlton (E)	Texas	57-58	Paskvan, George (B)	Wisconsin	41
Masters, Norm (T)	Mich. State	57-64	Paulekas, Tony (C)	Wash.-Jeff.	36
Mathys, Charley (B)	Indiana	22-26	Pearson, Lindell (B)	Oklahoma	52
Mattos, Harry (B)	St. Mary's	36	Peay, Francis (T)	Mo.	68
Matuszak, Marv (LB)	Tulsa	58	Pelfrey, Ray (E)	Kentucky St.	51-52
Mayer, Frank (G)	Notre Dame	27	Perkins, Don (B)	Platteville	43-45
Meilinger, Steve (E)	Kentucky	58-59	Perry, Claude (T)	Alabama	27-35
Mercein, Chuck (B)	Yale	67-68	Pesonen, Dick (B)	Minn.-Duluth	60
Mestnik, Frank (B)	Marquette	63	Peterson, Les (E)	Texas	32-35
Michaels, Walt (G)	Wash.-Lee	51	Peterson, Phil (B)	Wisconsin	32
Michalske, Mike (G)	Penn State	29-37	Peterson, Ray (B)	San Francisco	37
Midler, Lou (G)	N'western	41	Petibon, John (B)	Notre Dame	57
Mihajlovich, Lou (B)	Indiana	54	Pitts, Elijah (B)	Phil. Smith	61-68
Miketanic, Nick (G)	St. Norbert	37	Powers, Sam (G)	No. Michigan	21
Miller, Charles (C)	Purdue	38	Pregulman, Merv (G)	Michigan	46
Miller, Don (B)	SMU	54	Prescott, Ace (E)	H. Simmons	46
Miller, Don (B)	Wisconsin	41-42	Priatko, Bill (G)	Pittsburgh	57
Miller, John (T)	Boston Col.	60	Pritko, Steve (E)	Villanova	49-50
Miller, Paul (B)	So. Dakota	36-38	Provo, Fred (B)	Washington	48
Miller, Tom (E)	Hamp-Sydney	46	Psaltis, Jim (B)	So. Calif.	54
Mills, Tom (B)	Penn State	22-23	Purdy, Pid (B)	Beloit	26-27
Milton, Tom (E)	Lake Forest	24	Purnell, Frank (B)	Alcorn A&M	57
Minick, Paul (G)	Iowa	28-29	Putman, Earl (C)	Ariz. State	57
Mitchell, Chas. (B)	Tulsa	46	Quatse, Jess (T)	Pittsburgh	33
Molenda, Bo (B)	Michigan	29-32	Quinlan, Bill (E)	Mich. State	59-62
Monnett, Bobby (B)	Mich. State	33-38	Radick, Ken (E)	Marquette	30-31
Moore, Allen (E)	Texas A&M	39	Ranspot, Keith (E)	SMU	42
Moore, Tom (B)	Vanderbilt	60-65	Ray, Baby (T)	Vanderbilt	38-48
Moselle, Dom (B)	Wisconsin St.	51-52	Regnier, Pete (B)	Minnesota	22
Mosley, Russ (B)	Alabama	45-46	Reichardt, Bill (B)	Iowa	52
Moss, Perry (B)	Illinois	48	Reid, Floyd (B)	Georgia	50-56
Mott, Norm (B)	Georgia	33	Rhodymyre, Jay (C)	Kentucky	48-52
Mulleneaux, Carl (E)	Utah St.	38-41, 45-46	Riddick, Ray (E)	Fordham	40-42, 46
Mulleneaux, Lee (T)	Arizona State	38	Ringo, Jim (C)	Syracuse	53-63
Murray, Dick (T)	Marquette	21-24	Roach, John (QB)	SMU	61-63
Nadolney, Romanus (G)	Notre Dame	22	Roberts, Bill (B)	Dartmouth	56
Nash, Tom (E)	Geo. Washington	28-32	Robinson, Bill (B)	Lincoln	52
Neal, Ed (G)	Tulane	45-51	Robinson, Dave (LB)	Penn State	63-68
Nichols, Ham (G)	Rice	51	Rohrig, Herman (B)	Nebraska	41, 46-47
Niemann, Walt (C)	Michigan	22-24	Romine, Al (E)	Alabama	55, 58
Nitschke, Ray (LB)	Illinois	58-68	Rosatti, Roman (T)	Michigan	24, 26-27
Nix, Doyle (B)	SMU	55	Rose, Al (E)	Texas	32-36
Norgard, Al (E)	Stanford	34	Rosenow, Gus (B)	Ripon	21
Norton, Jerry (DB)	SMU	63	Roskie, Ken (B)	So. Carolina	48
Norton, Martin (B)	Carleton	25-28	Rote, Tobin (B)	Rice	50-56
Nussbaumer, Bob (B)	Michigan	46	Rowser, John (DB)	Michigan	67-68
Oakes, Bill (T)	Haskell	21	Ruetz, Howard (T)	Loras	51-53
O'Boyle, Harry (B)	Notre Dame	28-29, 32	Rush, Clive (E)	Miami (O.)	53
O'Connor, Bob (T)	Stanford	35	Ruzich, Steve (G)	Ohio State	52-54
O'Donahue, Pat (E)	Wisconsin	55	Salsbury, Jim (G)	UCLA	57-58
O'Donnell, Dick (E)	Minnesota	24-30	Sample, Chuck (B)	Toledo	42, 45
Odson, Urban (T)	Minnesota	46-49	Sandifer, Dan (B)	LSU	52-53
Ohlgren, Earl (E)	Minnesota	42	Sandusky, John (T)	Villanova	56

ALL-TIME ROSTER

Player — Position	College	Years	Player — Position	College	Years
Sarafiny, Al (C)	St. Edward	33	Thomason, Bob (B)	VMI	51
Sauer, George (B)	Nebraska	35-37	Thompson, Clarence (B)	Minnesota	39
Saunders, Russ (B)	California	31	Thurston, Fred (G)	Valparaiso	59-67
Schammel, Fran (G)	Iowa	37	Timberlake, Geo. (C)	So. Calif.	55
Scherer, Bernie (E)	Nebraska	36-38	Tinsley, Pete (G)	Georgia	38-45
Schlinkman, Walt (B)	Texas Tech	46-50	Toburen, Nelson (LB)	Wichita	61-62
Schmaehl, Art (B)	No College	21	Tollefson, Chuck (G)	Iowa	44-46
Schmidt, George (C)	Lewis	52-53	Tonnemaker, Clay (C)	Minnesota	50, 53-54
Schneidman, Herm (B)	Iowa	35-39	Tunnell, Emlen (B)	Iowa	59-61
Schoemann, Roy (C)	Marquette	38	Tuttle, Dick (E)	Minnesota	27
Schroll, Chuck (B)	LSU	51	Twedell, Fran (G)	Minnesota	39
Schuette, Carl (B)	Marquette	50-51	Uram, Andy (B)	Minnesota	38-43
Schultz, Charles (T)	Minnesota	39-41	Urban, Alex (E)	So. Carolina	41, 44-45
Schwammel, Ade (T)	Ore. St.	34-37, 43-44	Usher, Ed (B)	Michigan	22, 24
Secord, Joe (C)	No College	22	Vairo, Dominic (E)	Notre Dame	35
Seeman, George (E)	Nebraska	40	Vandersea, Phil (B-LB)	Mass.	66, 68
Seibold, Champ (T)	Wisconsin	34-41	Van Every, Hal (B)	Minnesota	40-41
Self, Clarence (B)	Wisconsin	52, 54-55	VanSickle, Clyde (C)	Arkansas	32-33
Serini, Wash (G)	Kentucky	52	VantHull, Fred (G)	Minnesota	42
Shanley, Jim (B)	Oregon State	58	Vereen, Carl (T)	Georgia Tech	57
Shelly, Dexter (B)	Texas	32-33	Vegara, George (E)	Notre Dame	25
Skeate, Gil (B)	Gonzaga	27	Vogds, Evan (G)	Wisconsin	48-49
Skibinski, Joe (G)	Purdue	55-56	Voss, Lloyd (T)	Nebraska	64-65
Skoglund, Bob (E)	Notre Dame	47	Voss, Walter (E)	Detroit	24
Skoronski, Bob (T)	Indiana	56, 59-68	Wagner, Buffton (B)	No. Mich.	21
Sleight, Elmer (T)	Purdue	30-31	Walker, ValJoe (B)	SMU	53-56
Smith, Ben (E)	Alabama	33	Webber, Howard (E)	Kansas St.	28
Smith, Bruce (B)	Minnesota	45-48	Weatherwax, Jim (T)	L. A. State	66-68
Smith, Earl (T)	Ripon	22	Wehba, Ray (E)	So. Calif.	44
Smith, Ed (B)	New York U.	37	Weisgerber, Dick (B)	Wilmette	38-40, 42
Smith, Ernie (T)	So. Calif.	35-37, 39	Wells, Don (E)	Georgia	46-49
Smith, Jerry (G)	Wisconsin	56	West, Pat (B)	So. Calif.	48
Smith, Oscar (B)	Tex. Mines	48	Wheeler, Lyle (E)	Ripon	21-23
Smith, Rex (E)	Wis. Teachers	22	White, Gene (B)	Georgia	54
Smith, Red (G)	Notre Dame	27-29	Whittenton, Jess (B)	Texas West	58-64
Smith, Warren (C)	Carleton	21	Wildung, Dick (T)	Minnesota	46-51, 53
Snelling, Ken (B)	UCLA	45	Wilkins, Ted (E)	Indiana	25
Sorenson, Glen (G)	Utah State	43-45	Williams, A. D. (E)	U. of Pacific	59
Sparlis, Al (G)	UCLA	46	Williams, Howard (B)	Howard U.	62-63
Spencer, Joe (T)	Okl. A&M	50-51	Williams, Dick (B)	Wisconsin	21
Spencer, Ollie (T)	Texas	57-58	Williams, Travis (HB)	Arizona State	67-68
Spinks, Jack (G)	Alcorn A&M	55-56	Wilson, Ben (FB)	U.S.C.	67
Stahlman, Dick (E)	Chicago	31-32	Wilson, John (B)	Dubuque U.	39
Stansauk, Don (T)	Denver	50-51	Wilson, Gene (E)	SMU	47-48
Starr, Bart (B)	Alabama	56-68	Wilson, Faye (B)	Texas A&M	31
Starrat, Ben (B)	St. Mary's	41-45	Wilson, Milt (T)	Wis. Teachers	21
Steen, Frank (E)	Rice	39	Wimberly, Abner (E)	LSU	50-51
Steiner, Rebel (E)	Alabama	50-51	Winkler, Francis (DE)	Memphis St.	68
Stephenson, Dave (G)	W. Virginia	51-54	Winters, Arnold (T)	No College	41
Stonebraker, John (E)	So. Calif.	42	Witte, Earl (B)	Gus. Adolphus	34
Sturgeon, Lyle (T)	No. Dakota St.	37	Wizbicki, Alex (R)	Holy Cross	50
Sullivan, Walter (G)	Beloit	21	Wood, Willie (B)	So. Calif.	60-68
Summerhays, Bob (B)	Utah	49-51	Woodin, Whitey (G)	Marquette	22-30
Svensen, Earl (C)	Minnesota	37-40	Wright, Steve (T)	Alabama	64-66
Svensen, George (C)	Minnesota	35-41	Young, Glenn (B)	Purdue	56-57
Switzer, Veryl (B)	Kansas St.	54-55	Young, Bill (G)	Ohio State	29
Symank, John (B)	Florida	57-62	Zarnas, Gus (G)	Ohio State	39-40
Zafaryn, Len (T)	No. Carolina	50, 53-56	Zatkoff, Roger (LB)	Michigan	53-56
Tassos, Damon (G)	Texas A&M	47-49	Zeller, Joe (G)	Indiana	32
Taughner, Claude (B)	Marquette	22	Zoll, Carl (G)	No College	21-22
Taylor, Jim (B)	LSU	58-66	Zoll, Dick (G)	Indiana	39
Temp, Jim (E)	Wisconsin	57-60	Zoll, Martin (G)	No College	21
Tenner, Bob (E)	Minnesota	35	Zuidmulder, Dave (B)	St. Ambrose	29-31
Teteak, Deral (G)	Wisconsin	52-56	Zupek, Al (E)	Lawrence	46
			Zuver, Merle (C)	Nebraska	30

ALL-TIME SCORING — LEAGUE GAMES ONLY

	*Yrs.	Ts.	X.P.	F.G.	T.P.		*Yrs.	Ts.	X.P.	F.G.	T.P.
Don Hutson	35-45	105	172	7	823	Buckets Goldenberg	33-45	10	0	0	60
Paul Hornung	57-62, 64-66	62	190	66	760	Eddie Kotal	25-29	10	0	0	60
Jim Taylor	58-66	91	0	0	546	Red Dunn	27-31	1	46	2	58
Fred Cone	51-57	16	200	53	455	Herb Adderley	61-67	8	0	0	56
Ted Fritsch	42-50	37	62	36	392	Milt Gantenbein	31-39	9	0	0	54
Clarke Hinkle	32-41	43	31	28	373	Ward Cuff	47	0	30	7	51
Max McGee	54, 57-67	51	0	0	306	Myrt Basing	23-26	8	0	0	48
Verne Lewellen	24-32	50	1	0	301	Walter Schlinkman	46-48	8	0	0	48
Don Chandler	65-67	0	117	48	261	Arnold Herber	30-39	7	2	0	44
Bill Howton	52-58	43	0	0	258	Marv Fleming	64-67	7	0	0	42
Johnny Blood	29-33, 35-36	37	2	0	224	Don McIlhenny	57-59	7	0	0	42
Elijah Pitts	61-67	32	0	0	192	Babe Parilli	52-53, 57	7	0	0	42
Tony Canadeo	41-44, 46-52	31	0	0	186	Carl Lidberg	26-30	7	0	0	42
Boyd Dowler	59-67	30	0	0	180	George Sauer	35-36	7	0	0	42
Tobin Rote	50-56	30	0	0	180	Carlton Elliott	51-54	7	0	0	42
Tom Moore	60-65	27	0	0	162	Howie Ferguson	53-58	7	0	0	42
Jerry Kramer	58-67	0	81	25	156	Travis Williams	67	6	0	0	36
Joe Laws	34-45	22	0	0	132	Al Carmichael	53-58	6	0	0	36
Gary Knafelc	54-62	21	0	0	126	Marty Norton	25-28	6	0	0	36
Curly Lambeau	21-27	12	19	6	109	Charles Mathys	22-26	5	0	1	33
Breezy Reid	50-55	18	0	0	108	Jack Cloud	50-51	5	0	0	30
Bob Mann	50-53	17	0	0	102	Rex Enright	26-27	5	0	0	30
Hank Bruder	31-39	16	4	0	100	Joe Johnson	54-58	5	0	0	30
Lou Brock	41-45	16	2	0	98	Harry O'Boyle	28-32	5	0	0	30
Andy Uram	38-43	16	2	0	98	Ray Pelfrey	51	5	0	0	30
Bob Monnett	32-38	9	28	5	97	Al Rose	32-35	5	0	0	30
Paul Engebretsen	35-41	0	48	16	96	Charles Sample	42-45	5	0	0	30
Ron Kramer	57-64	15	0	0	90	Veryl Switzer	54-55	5	0	0	30
LaVern Dilweg	27-34	14	2	0	86	Tilly Voss	24-28	5	0	0	30
C. Dale	65-67	14	0	0	84	Pid Purdy	26-27	1	15	2	27
Clyde Goodnight	45-48	13	0	0	†80	Bill Reichardt	52	1	5	5	26
Nolan Luhn	45-49	13	0	0	†80	Willie Wood	60-67	4	1	0	25
Carl Mulleneaux	38-41, 45-46	13	0	0	78	Ade Schwammel	34-36, 44	0	7	6	25
Eddie Jankowski	37-41	11	4	1	73	Jim Grabowski	66-67	4	0	0	24
Bart Starr	56-67	12	0	0	72	Ted Cook	48-50	4	0	0	24
Harry Jacunski	39-44	12	0	0	72	Steve Pritko	49-50	4	0	0	24
Hurdis McCrary	29-32	12	0	0	72	Charlie Brock	39-47	4	0	0	24
Donny Anderson	66-67	12	0	0	72	Bobby Dillon	52-58	4	0	0	24
Irv Comp	43-48	11	0	0	66	Paul Duhart	44	4	0	0	24
Ernie Smith	35-39	0	45	7	66	Ralph Earhart	48-49	4	0	0	24
Roger Grove	31-34	8	16	0	64	Bob Forte	46-53	4	0	0	24
Bo Molenda	29-32	9	10	0	64	Bob Long	64-67	4	0	0	24
Cecil Isbell	38-42	10	3	0	63	Paul Miller	36-37	4	0	0	24
Billy Grimes	50-51	10	0	0	60	Dick O'Donnell	25-28	4	0	0	24
Cub Buck	22-25	0	24	12	60	Bernard Scherer	36-38	4	0	0	24
Weert Engelmann	30-33	10	0	0	60	Harold Van Every	40-41	4	0	0	24

	*Yrs.	Ts.	X.P.	F.G.	T.P.
Earl Gros	62-63	4	0	0	24
Ed Cody	47-48	2	11	0	23
Roy McKay	44-47	3	3	0	21
Paul Fitzgibbons	30-32	3	1	0	19
Al Baldwin	50	3	0	0	18
Larry Coutre	50, 53	3	0	0	18
Jack Harris	25-26	3	0	0	18
Dutch Hendrian	24	3	0	0	18
Tommy Mills	23	3	0	0	18
Don Perkins	43-45	3	0	0	18
Jug Girard	48-51	3	0	0	18
Dom Moselle	51-52	3	0	0	18
Willie Davis	60-67	2	0	0	†16
Bob Adkins	40-41, 45-46	2	4	0	16
Bruce Smith	45-47	2	0	0	†14
Ray Nitschke	58-67	2	0	0	12
Bob Jeter	63-67	2	0	0	12
Ben Wilson	67	2	0	0	12
John Martinkovic	51-54	2	0	0	12
Gus DeMoe	21	2	0	0	12
Dick Flaherty	26	2	0	0	12
Cal Hubbard	29-36	2	0	0	12
Jack Jacobs	47-49	2	0	0	12
Swede Johnston	35-36	2	0	0	12
Larry Marks	28	2	0	0	12
Joel Mason	42-45	2	0	0	12
Mike Michalske	29-36	2	0	0	12
Tom Nash	30-32	2	0	0	12
Art Schmaehl	21	2	0	0	12
Herman Schneidman	36-37	2	0	0	12
Ben Starret	42-45	2	0	0	12
Cowboy Wheeler	22-23	2	0	0	12
Mule Wilson	31	2	0	0	12
Lee Roy Caffey	65-67	2	0	0	12
Doug Hart	64-67	2	0	0	12
Ben Agajanian	61	0	8	1	11
Whitey Woodin	22-31	1	4	0	10
George Abramson	25	0	2	2	8
Hank Gremminger	56-65	1	0	0	6
John Roach	61-62	1	0	0	6
Steve Melinger	58-60	1	0	0	6
Jesse Whittenton	58-64	1	0	0	6
Gib Dawson	53	1	0	0	6
Val Joe Walker	53-54	1	0	0	6
Dan Currie	58-64	1	0	0	6
Joe Francis	58-60	1	0	0	6
Don Barton	53	1	0	0	6

	*Yrs.	Ts.	X.P.	F.G.	T.P.
John Papit	53	1	0	0	6
J. R. Boone	53	1	0	0	6
Lionel Aldridge	63-67	1	0	0	6
C. Mercein	67	1	0	0	6
Henry Jordan	57-67	1	0	0	6
Bobby Jack Floyd	52	1	0	0	6
Jim Keane	52	1	0	0	6
Ace Loomis	51-53	1	0	0	6
Bob Summerhays	49-51	1	0	0	6
Rebel Steiner	50-51	1	0	0	6
Wally Dreyer	50	1	0	0	6
Paul Christman	50	1	0	0	6
Dan Orlich	49-50	1	0	0	6
Nate Abrams	21	1	0	0	6
Frank Baker	31	1	0	0	6
Frank Balazs	39-40	1	0	0	6
Bill Butler	59	1	0	0	6
Lew Carpenter	59-62	1	0	0	6
Paul Winslow	60	1	0	0	6
Lamar McHan	59-60	1	0	0	6
Norman Barry	21	1	0	0	6
Wayland Becker	36	1	0	0	6
Len Szafaryn	50-55	1	0	0	6
Tiny Cahoon	26-28	1	0	0	6
Joe Carter	42	1	0	0	6
Larry Craig	39-47	1	0	0	6
Bernie Crimmins	45	1	0	0	6
Jack Cronin	22	1	0	0	6
Jim Crowley	25	1	0	0	6
Tony Falkenstein	43	1	0	0	6
Moose Gardner	22	1	0	0	6
Tom Greenfield	39-41	1	0	0	6
Len Hearden	24	1	0	0	6
Stan Heath	49	1	0	0	6
Tubby Howard	21	1	0	0	6
Bob Ingalls	42	1	0	0	6
Glenn Johnson	49	1	0	0	6
Bruce Jones	28	1	0	0	6
Bill Kelley	49	1	0	0	6
Ernie Pannell	41-42, 45	1	0	0	6
Keith Ranspot	42	1	0	0	6
Ray Riddick	40-42, 46	1	0	0	6
Ken Roskie	48	1	0	0	6
Russ Saunders	31	1	0	0	6
Zud Schammel	37	1	0	0	6
Bud Svendsen	37-40	1	0	0	6
Bill Anderson	65-66	1	0	0	6

*Yrs.—Years played. Ts.—Touchdowns. X.P.—Points after touchdowns. F.G.—Field goals. T.P.—Total points.
†—Safety.

Discover Ford Country. It's the Going Thing.



1969 Ford Torino.

*How can
anything so hot
look so cool?*

Daytona, Darlington, Riverside. '68 Torinos proved their strength by leading the pack at some of the meanest tracks around. That's the blast-off background of the beefed-up, raring-to-go Torinos for '69. They're waiting to be turned on. At your Ford Dealer's. Now.

TORINO



'69 Torino GT SportsRoof



It's the going thing!

Guess who.



Who's got as wide a track as Cadillac?

A longer wheelbase than Chevrolet?

More front headroom and legroom
than a Chrysler Imperial?

The '69 Ford does. That's who!

