

# PACKERS



1970

**OFFICIAL  
PRESS BOOK**



Hello  
world.



The little car derby  
is a whole new  
horse race.

As little as the little economy imports.  
Yet built to go a long, long way. Long on gas  
mileage... service and repair intervals.  
And Pinto's priced like the little imports.

*Pinto*...

Put a little kick in your life at your Ford Dealer



More publications available at:

[www.retroseasons.com/library/](http://www.retroseasons.com/library/)

Page	Tab	Contents	Page	Tab	Contents
1- 5	1.	GENERAL INFORMATION	40-41		NFL Championship Game Records
4		Pro-Bowl and All-Pro Selections	42		AFL-NFL Title Game Records
6- 9	2.	CLUB HISTORY	44-49		Packers Individual Records
10	3.	GEN. MANAGER & COACHES	50-52		Packers Team Records
11-14		Phil Bengtson		7.	SCORES
		Assistant Coaches	52		Packers vs. Opponents
16-30	4.	VETERANS	53-58		Results By Seasons
		Biographies	60		Special Series Results
32-33	5.	1969 STATISTICS	63		Pre-Season Results
34		Team and Individual Statistics		8.	ROOKIES
64		Alphabetical Roster, Depth Chart	61		No. 1 Draft Choices 1936-1970
65		Game by Game Offensive Stats			1970 College Draft Choices
36-37		Game by Game Defensive Stats		9.	ALL-TIME
		NFL Schedule	66-70		All-Time Packers Roster
38-39	6.	RECORDS	71-72		All-Time Packers Scoring
		Western Div. Playoff Statistics			

The 1970 Green Bay Packer Press Book is divided into 9 tabbed sections for quick reference. We hope that it will be informative and if you have any suggestions or comments, please send them to us. Written and edited by Chuck Lane, Director of Public Relations, Green Bay Packers.

All photos by Vernon J. Biever

## ELEVEN TIMES WORLD CHAMPIONS

The Green Bay Packers lead the NFL in most Championships won with eleven. Green Bay won three by League standing (1929, 1930 and 1931) and eight times (1936, 1939, 1944, 1961, 1962, 1965, 1966 and 1967) since the play-off system was established in 1933.

In addition, the Packers hold two AFL-NFL Professional Football Titles by virtue of their 35-10 victory over the Kansas City Chiefs in 1967 and their 33-14 victory over the Oakland Raiders in 1968.

The Chicago Bears are next with eight NFL Championships, having won twice prior to the play-off system (1921 and 1932) and six times since (1937, 1940, 1941, 1943, 1946 and 1963).

The Giants, Lions and Browns have won 4 titles, the Eagles and Colts 3, the Redskins twice, and Cleveland Rams, Chicago Cards, and Los Angeles Rams once apiece.

The Giants have appeared in 13 playoffs and have lost 10. The Bears and Redskins have lost 4 times and the Browns 5 times.

Green Bay's only two losses were in 1938 (Giants 23, Packers 17) in New York; and in 1960 in Philadelphia (17-13 margin to the Eagles).

### GREEN BAY'S PLAY-OFF RECORD

1929	12 Wins	0 Defeats	1 Tie
1930	10 Wins	3 Defeats	1 Tie
1931	12 Wins	2 Defeats	0 Ties
1936 — Packers	21 — Boston Redskins	6 — At New York	(29,545)
1938 — Giants	23 — Packers	17 — At New York	(48,120)
1939 — Packers	27 — Giants	0 — at Milwaukee	(32,279)
1944 — Packers	14 — Giants	7 — at New York	(46,016)
1960 — Eagles	17 — Packers	13 — at Philadelphia	(67,325)
1961 — Packers	37 — Giants	0 — at Green Bay	(39,029)
1962 — Packers	16 — Giants	7 — at New York	(64,892)
1965 — Packers	23 — Cleveland	12 — at Green Bay	(50,777)
1966 — Packers	34 — Dallas	27 — at Dallas	(74,152)
1967 — Packers	21 — Dallas	17 — at Green Bay	(50,861)

### AFL-NFL TITLE

1967 — Packers	35 — Kansas City	10 — at Los Angeles	(63,036)
1968 — Packers	33 — Oakland	14 — at Miami	(75,546)

# THE GREEN BAY PACKERS, INC.

## COACHING STAFF

- PHIL BENGTSON**  
Head Coach
- ZEKE BRATKOWSKI**  
Assistant Coach
- DICK EVANS**  
Defensive Secondary
- FORREST GREGG**  
Assistant Coach
- DAVE HANNER**  
Defensive Line
- BOB SCHNELKER**  
Passing Game
- RAY WIETecha**  
Running Game

## MEDICAL and EQUIPMENT STAFF

- DR. JAMES W. NELLEN**  
Team Physician
- DR. E. S. BRUSKY**  
Team Physician
- GERALD "Dad" BRAISHER**  
Equipment Manager
- DOMINIC GENTILE**  
Trainer
- BOB NOEL**  
Asst. Equipment Manager
- CARL "Bud" JORGENSEN**  
Asst. Trainer

## ADMINISTRATIVE PERSONNEL

- DOMENIC OLEJNICZAK**  
President
- RICHARD BOURGUIGNON**  
Vice President
- JOHN B. TORINUS**  
Secretary
- FRED N. TROWBRIDGE**  
Treasurer

## ADMINISTRATIVE

- PHIL BENGTSON**  
General Manager
- THOMAS M. MILLER**  
Asst. to the Gen. Mgr.
- ALBERT "Pat" PEPPLER**  
Director of Player Personnel
- MILT WITTIG**  
Milw. Ticket Director
- CHARLES S. LANE**  
Dir. of Public Relations
- MERRILL KNOWLTON**  
G. B. Ticket Director
- WILNER BURKE**  
Halftime Director
- ED WOCHENSKE**  
Program Sales
- AL TREML**  
Film Director, Photographer
- VERN BIEVER**  
Sideline Photographer
- WALLY CRUICE**  
Chief Game Scout
- WAYNE ROBINSON**  
Personnel Scout

## GREEN BAY PACKERS ADDRESS:

- GREEN BAY:** 1265 Lombardi Ave., Green Bay 54305  
Phones: Business (414) 494-2351 / Tickets 494-2355
- MILWAUKEE:** Milwaukee County Stadium, Milwaukee 53246  
Phone: (414) 342-2717
- STADIUMS:** Lambeau Field, Green Bay Capacity: 56,263  
Milwaukee County Stadium, Milwaukee Capacity: 47,823

The Green Bay Packer Football Team is a community owned non-profit corporation. 4738½ shares of stock are owned by 1698 shareholders — none of whom receive any dividend on their initial investment. The Corporation is governed by 45 directors and a 7 man executive committee. (For the Green Bay Packer story, turn to P. 6.)

**Thinking about  
a new car?  
Consider this fact:**



**More Ford LTD owners  
come back for  
another Ford LTD than  
owners of any car  
except one...and that car  
is priced over \$7,000.**

**Ask your  
Ford Dealer about it!**

## PACKER ALL-LEAGUE SELECTIONS

1931 — LaVerne Dilweg, End; Cal Hubbard, Tackle; Mike Michalske, Guard; Johnny Blood, Halfback  
 1932 — Cal Hubbard, Tackle; Nate Barrager, Center; Arnie Herber, Halfback  
 1933 — Cal Hubbard, Tackle  
 1935 — Mike Michalske, Guard  
 1936 — Don Hutson, End; Ernie Smith, Tackle; Lon Evans, Guard; Clarke Hinkle, Fullback

1937 — Lon Evans, Guard; Clarke Hinkle, Fullback  
 1938 — Don Hutson, End; Russ Letlow, Guard; Clarke Hinkle, Fullback  
 1939 — Don Hutson, End  
 1940 — Don Hutson, End  
 1941 — Don Hutson, End; Cecil Isbell, Halfback; Clarke Hinkle, Fullback  
 1942 — Don Hutson, End; Cecil Isbell, Halfback  
 (Official selection discontinued in 1943).

## PRESS ASSOCIATION ALL-PRO SELECTIONS

1943 — Don Hutson, End (AP, UP & INS); Tony Canadeo, Fullback (AP & INS)  
 1944 — Don Hutson, End (AP, UP & INS)  
 1945 — Don Hutson, End (AP & UP); Charles Brock, Center (AP, UP & INS); Ted Fritsch, Fullback (UP)  
 1946 — Ted Fritsch, Fullback (AP, UP & INS)  
 1947 — Larry Craig, End (UP); Tony Canadeo, Fullback (UP)  
 1950 — Billy Grimes, Halfback (INS); Clay Tonnemaker, Center (INS)  
 1954 — Roger Zatkoff, Linebacker (UP); Bobby Dillon, Halfback (AP)  
 1956 — Bobby Dillon, Safety (UP); Billy Howton, End (AP & UP)  
 1957 — Billy Howton, End (AP & UP); Jim Ringo, Center (AP); Bobby Dillon, Halfback (AP)  
 1958 — Bobby Dillon, Halfback (AP & UP); Jim Ringo, Center (AP)  
 1959 — Jim Ringo, Center (AP & UPI)  
 1960 — Jim Ringo, Center (AP & UPI); Paul Hornung, Halfback (AP & UPI); Forrest Gregg, Tackle (AP); Henry Jordan, Tackle (AP & UPI); Bill Forester, Linebacker (AP & UPI); Jerry Kramer, Guard (AP)  
 1961 — Paul Hornung, Halfback (AP & UPI); Jim Ringo, Center (AP, NEA & UPI); Forrest Gregg, Tackle (UPI); Fred Thurston, Guard (AP, NEA & UPI); Henry Jordan, Tackle (AP, NEA & UPI); Jesse Wittenton, Halfback (AP & UPI); Bill Forester, Linebacker (AP & UPI); Dan Currie, Linebacker (NEA & UPI); Jim Taylor, Fullback (NEA)  
 1962 — Ron Kramer, End (AP); Forrest Gregg, Tackle (AP, NEA & UPI); Jerry Kramer, Guard (AP, NEA & UPI); Fred Thurston, Guard (UPI); Jim Ringo, Center

(AP, NEA & UPI); Jim Taylor, Fullback (AP, NEA & UPI); Willie Davis, End (AP); Henry Jordan, Tackle (AP); Dan Currie, Linebacker (AP, NEA & UPI); Bill Forester, Linebacker (AP, NEA & UPI); Herb Adderley, Halfback (AP & UPI)  
 1963 — Forrest Gregg, Tackle (AP, NEA & UPI); Jerry Kramer, Guard (AP, NEA & UPI); Jim Ringo, Center (AP, NEA & UPI); Henry Jordan, Tackle (AP, NEA & UPI); Bill Forester, Linebacker (UPI); Herb Adderley, Halfback (AP); Willie Wood, Halfback (NEA)  
 1964 — Ray Nitschke, Linebacker (AP & UPI); Willie Davis, End (AP, NEA & UPI); Forrest Gregg, Tackle (AP, NEA & UPI); Henry Jordan, Tackle (AP & UPI); Willie Wood, Halfback (AP, NEA & UPI)  
 1965 — Forrest Gregg, Guard & Tackle (AP & UPI); Willie Davis, End (AP, NEA & UPI); Ray Nitschke, Linebacker (UPI); Herb Adderley, Halfback (AP, NEA & UPI); Willie Wood, Halfback (AP, NEA & UPI)  
 1966 — Forrest Gregg, Tackle (AP, NEA, UPI); Jerry Kramer, Guard (AP, UPI); Bart Starr, Quarterback (AP, NEA, UPI); Willie Davis, End (AP, NEA, UPI); Ray Nitschke, Linebacker (AP, NEA, UPI); Lee Roy Caffey, Linebacker (AP, UPI); Herb Adderley, Halfback (AP, NEA, UPI); Willie Wood, Halfback (AP, NEA, UPI)  
 1967 — Forrest Gregg (AP & UPI), Jerry Kramer (AP & UPI) Willie Davis (AP, UPI & NEA) Dave Robinson (AP, UPI & NEA) Bob Jeter (AP, UPI & NEA), Willie Wood (AP & UPI).  
 1968 — Willie Wood (UPI); Dave Robinson (UPI).  
 1969 — Herb Adderley (AP); Gale Gillingham (NEA); Dave Robinson (AP), (UPI), (NEA.)

## PRO-BOWL PARTICIPANTS

Ends — Willie Davis, 1964-68; Bill Howton, 1953, 56, 58; Ron Kramer, 1963; John Martinkovic, 1954, 56; Max McGee, 1962; Abner Wimberly, 1953; Boyd Dowler, 1966 & 1968; Carroll Dale, 1969-70.  
 Tackles — Forrest Gregg, 1961-65; 67-69; Dave Hanner, 1954-55; Henry Jordan, 1961-62, 64-67; Bob Skoronski, 1967; Richard Widung, 1952; Roger Zatkoff, 1955-57; Gale Gillingham, 1970.  
 Guards — Bill Forester, 1960-63; Jerry Kramer, 1963-64, 68; Darel Teteak, 1953.  
 Linebackers — Lee Roy Caffey, 1966, Dan Currie, 1961; Ray Nitschke, 1965; Dave

Robinson, 1967-70; Clayton Tonnemaker, 1954.  
 Centers — William Neal, 1951; James Ringo, 1958-64.  
 Quarterbacks — Tobin Rote, 1957; Bart Starr, 1961-63, 67.  
 Halfbacks — Herb Adderley, 1964-68; Bob Dillon, 1956-59, Bill Grimes, 1951-52; Paul Hornung, 1960-61; Emlen Tunnell, 1960; Jess Whittenton, 1962-64; Willie Wood, 1963, 65-70; D. Anderson 1969; Bob Jeter, 1968, 1970.  
 Fullbacks — Howard Ferguson, 1956; Tom Moore, 1963; Jim Taylor, 1961-63, 64-65.



## BIRTH OF A TEAM AND A LEGEND

On the evening of August 11, 1919, a score or more of husky young characters, called together by Curly Lambeau and George Calhoun, gathered in the dingy editorial room of the old Press-Gazette building on Cherry Street and organized a football team. They didn't know it, but that was the beginning of the incredible saga of the Green Bay Packers.

There had been some preliminary talk and planning and that night's decision wasn't announced until two days later, but the big step had been taken. So August 11 is as good a birthday as any.

Actually, the initial spark had been struck a few weeks before during a casual street corner conversation between Curley Lambeau and George Calhoun. It was apparently one of those "why not get up a football team?" remarks, but once they got interested they wasted no time.

First they talked Curley's employers at the Indian Packing Company into putting up some money for equipment.

Because the team's jerseys had been provided by the packing company, which also permitted the use of its athletic field for practice, the club was identified in its early publicity as a project of the company. With this tie-in the name "Packers" was a natural, and Packers they have been ever since, although the corporation had practically faded out of the picture before that first season was half over.

**EARLY DAYS** — That first season the team won 10 games and lost only

one against other teams from Wisconsin and Upper Michigan. Games were played in an open field with no fence or bleachers, and interested fans "passed the hat." But the team was so successful by 1921 that Lambeau was backed by two officials of the packing plant in obtaining a franchise in the new national pro-football league that had been formed in 1920. Cash customers didn't quite pay the freight, and at the end of the season it had to be forfeited. This was the first in a long series of troubles that the now famous team overcame, for in 1922 Lambeau gained other backers and bought the franchise back for \$250. Troubles continued during that season. One game was rained out and the insurance company wouldn't pay off because the official amount of rain was one one-hundredth of an inch short of that required in the policy. Another storm late in the season when the Packers were scheduled to play the Duluth Eskimos, however, proved the founding of the modern community corporation. A. B. Turnbull, general manager of the Green Bay Press-Gazette, told the Packers to play anyway. He then went out and helped organize the businessmen of Green Bay in the support of the team, and the Green Bay Football Corporation was formed.

**THE IRON MAN ERA** — With good financial backing, Lambeau began to pick up college stars from all over the country, plus some unknowns who were going to turn out to be "greats." And in 1929 Green Bay won the national professional football championship. They repeated in

1930 and 1931 with a team featuring such all-time pro greats as Red Dunn, Verne Lewellen, Cal Hubbard, Bo Molenda, Jug Earp, Mike Michalske, Johnny Blood, Bill Kern, Arnie Herber, Clarke Hinkle, Lavvie Dilweg, Tom Nash, Milt Gantenbein and Hank Bruder. Many games 12 to 13 players would go for almost the full 60 minutes. These teams were hailed all over the country as some of the greatest ever.

**THE HUTSON PERIOD** — Trouble flared again soon afterward. A fan fell from the stands, sued and won a \$5,000 verdict, and the insurance company went out of business. The Packers went into receivership, were just about to fold when Green Bay businessmen came to the rescue again, raised \$15,000 in new capital and reorganized the club. About this time a rather slight, lanky end by the name of Don Hutson came to the club. From his first game on, Hutson became the terror of the league and the secret of Green Bay's next three championships. On his first play in professional ball against the Chicago Bears, he took a pass from Arnie Herber and went 94 yards for the only score of the game. With Herber and Cecil Isbell pitching and Hutson catching anything they threw at him despite any kind of a stop-Hutson defense, Green Bay won championships in 1936, 1939 and 1944, and all during the Hutson era they always finished in the first division.

**RONZANI REGIME** — After Hutson's retirement, Packer fortunes again went into a decline. The disastrous pro football war brought on another financial crisis after the 1949 sea-

son. In the midst of it Lambeau resigned to take a position as head coach of the Chicago Cardinals. Then began another major reorganization and rebuilding effort with Gene Ronzani of the Bears hired as head coach. Over \$125,000 was raised in a giant stock sale all over the state. Ronzani's teams improved each of the first three seasons until 1952. The Packers were in the thick of the title chase until the last weeks of the season. In 1953 the team played erratic ball and Ronzani resigned with two games remaining on the schedule.

**BLACKBOURN TAKES OVER** — The Packers overhauled their front office and coaching staff in 1954, hiring Verne C. Lewellen, all-time Packer great, attorney and business man, as general manager. Reaching into college ranks for a head coach was the next step in the re-building plans and Lisle W. Blackbourn, a native Wisconsinite, and Coach of Marquette University, was signed to a contract. During the four year Blackbourn regime the Packers won 17 while losing 31.

**McLEAN MOVES UP** — Likeable Ray "Scooter" McLean moves up from an outstanding assistant coach to guide the destiny of the Packers for 1958. McLean resigned in December after a 1-10-1 record, worst in Packer history in his first season as head coach.

**FROM SANDLOT TO STADIUM** — Procedures at Packers games have come a long way since the sandlot years of 1919-20 when the Pack was subsisting on the contents of George Calhoun's hat. Then there were no ushers, no majorettes, no band and no public address system — the lat-

ter hadn't been invented yet. There weren't even any seats at first, and it didn't cost anything to get in.

When the Packers began their career in 1919 they played on approximately the same site as now abandoned City Stadium, but with a mighty difference. Hagemeister Park, as it was called, was just a big vacant lot with a football gridiron marked on it.

There were no gates because there wasn't any fence. Spectators just dropped off the Walnut street streetcar and walked over to the sideline, or drove their own cars and parked about ten yards behind the ropes stretched around the playing field.

If they felt like it they either sat in their automobiles or on top of them, but most preferred to get out and follow the play up and down the field. By moving as the play progressed you always had a "50-yard line" location and were handy to any donnybrook that might require a little help. In fact, when things got exciting the crowd sometimes spilled right onto the field, surrounded the scrimmage in a big circle and virtually took part in every play. Teams didn't huddle in those days, or the fans would have been in that too.

When the half ended teams grabbed blankets and adjourned to opposite end zones where they relaxed and talked over the tactics for the next half. Nothing private about those huddles. The crowd formed a ring around the players, a practice encouraged since it made a handy wind break. Fans weren't bashful about joining the discussions either, sometimes with surprising results. At least one early game was pulled out of the fire by a spectators' halftime suggestion.

In 1920 a section of stands was built — just a small bleacher with a ca-

capacity of a couple hundred — on one side of the field, and a fee charged to sit there. The next year a portable canvas fence was erected around the whole field and a regular admission charge inaugurated.

When Hagemeister Park was dug up in 1923 to make way for East High School, the Packers shifted to the new baseball grounds out on the end of Main Street. This was called Bellevue Park because it was just east of the old Hagemeister Brewery, which was renamed the Bellevue Products Co. during Prohibition. Things were Big Time out there, with crowds of 4,000 to 5,000 storming the fences to boo the hated Chicago Bears.

The Packers used Bellevue in 1923-24, but it was obviously inadequate and too far out, lacking about every facility needed for football. Agitation to build a new stadium somewhere near the original site culminated in the erection of old City Stadium just back of the new high school.

The new plant was barely completed in time for the 1925 opening, but was an immediate success, the Bear game that year drawing a record crowd of nearly 6,000. It was a typical small town park of its day, with wooden fences and stands on both sides between the 30-yard lines. A wooden railing surrounded the rest of the gridiron, along which the Knothole Gang stood or sat on the ground.

Seating capacity was gradually increased until it seated 15,000 by 1934, with the end zones still uncovered. With the filling in of the area around the end lines the ultimate capacity of 25,000 was reached.

One of the first tasks of the stadium builders was the creation of a good playing field, a job admirably done. Whatever antiquated City Stadium

may have lacked, one of the best turfs in the country wasn't one of them.

After World War II City Stadium gradually faded from its once proud position as one of the favored fields in the National Football League to an inadequate and obsolete installation. As pro crowds increased it was impossible to expand the stadium any further. With limited capacity, the Packers found it increasingly difficult to schedule top opponents at home. September 29, 1957 was a proud day for Green Bay and its Packers. A million dollar modern stadium with a seating capacity of 32,150 was dedicated. In 1961 the Stadium was expanded to 38,669, to 42,327 in 1963, to 50,861 in 1965 when the name was changed to Lambeau Field, and to the present 56,161 in 1970.

There has never been an empty seat for a League game in Green Bay since 1959 when Vince Lombardi revived Packer football.

#### **THE LOMBARDI ERA**

In 1959, the Packers announced the signing of New York Giant assistant Vince Lombardi as Head Coach and General Manager of a team that finished dead last in 1958 with a 1-10-1 mark.

In his first season, Lombardi lifted the Packers to a 7-5 record and was unanimously voted Coach of the Year.

Then in 1960, the Packers captured the Western Division Title and went on to win World Championships in 1961, 1962, 1965, 1966 and 1967. Never finishing lower than second since 1960, his teams have become the standard of football excellence and the Packer franchise has become one of the most successful in the National Football League.



**VINCE LOMBARDI**  
1913-1970

In 1967, Green Bay played to 22 consecutive sellouts in 23 games and became the first team in the history of the League to win three straight World Titles.

Following the third consecutive Title in 1967, Lombardi turned over the Head Coaching duties to Phil Bengtson and one year later announced that he was leaving Green Bay to coach and manage the Washington Redskins.

Over a nine year span as Head Coach, Lombardi's teams racked up 141 victories against 39 losses and 4 ties for a remarkable .783 winning percentage. Even more noteworthy, however, is the record of Lombardi coached teams in post-season play. In 10 Division playoffs and World Championship Games, the Packers emerged victorious nine times.

## JOHN PHILIP "PHIL" BENGTON

HEAD COACH AND GENERAL MANAGER

Born July 17, 1913 in Rosseau, Minnesota, Phil Bengtson moved to Crookston and later to Saint Paul. After attending University High School in Minneapolis, Bengtson enrolled at the University of Minnesota in 1931, where he played football under Bernie Bierman. In 1934 Bengtson was named All-American at Tackle and was selected to play in the East-West Shrine Game and the College All-Star game at Chicago.

Foregoing offers to play professional football, Bengtson accepted an assistant coaching position at the University of Missouri under Don Faurot in 1935. Faced with rebuilding a Tiger team that had not won a game in three years, Bengtson was instrumental in helping Missouri capture the Big Eight Title in 1939 and taking them to the Orange Bowl.

In 1940, Bengtson moved to Stanford University under Clark Shaughnessy, where in the first year their "cinderella T-formation team" won the Pacific Coast Title and the Rose Bowl, defeating the University of Nebraska.

With the coming of WW II, Bengtson coached the Iowa Pre-Flight service football team before becoming a gunnery officer aboard the USS Midway with the rank of Lt. Commander.

Following the War, Bengtson returned to Stanford in 1946 where he remained for five more years before Buck Shaw persuaded him to enter pro football as an assistant coach with the San Francisco 49ers. In eight seasons with the 49'ers, Phil served under three head coaches: Buck Shaw, Red Strader and Frank Albert.

When Vince Lombardi was named Head Coach and General Manager at Green Bay, he summoned Bengtson to shore up what had been the League's most charitable defense. In nine years, that defensive unit never finished below third in comparative League ratings, while ranking first in fewest points allowed three times (1962, 1965 and 1966). His 1960, 1961, 1963 and 1964 teams allowed the second fewest points while the 1967 World Champions led the League in total defense.

In February of 1967, Lombardi announced that he was stepping down, and appointed his defensive assistant Phil Bengtson Head Coach. One year later when Lombardi left for Washington, Bengtson was named General Manager also. Bengtson's coaching record to date is:

### BENGTSON'S COACHING RECORD

Pre-Season	League
1968: 4-2-0	6-7-1
1969: 4-2-0	8-6-0
2 Year Totals: 8-4-0	14-13-1





**ZEKE BRATKOWSKI**  
**ASSISTANT COACH —**  
**OFFENSIVE BACKFIELD**

Edmund "Zeke" Bratkowski was an active player in the NFL for thirteen seasons before being named an assistant coach by Phil Bengtson in 1969. Zeke was born Oct. 20, 1931 in Danville, Ill. and attended the University of Georgia. Following graduation, he was a number two round draft selection of the Chicago Bears in 1953. In 5 seasons with Chicago, Zeke completed 263 of 537 passes for 3639 yards and 24 TDs. In 1961 the Bears traded him to Los Angeles where he completed 279 of 530 passes for 3551 yards and 20 TDs in two and a half seasons before being traded to the Packers. With Green Bay, Zeke became the premier relief pitcher in the game, winning 10 games in 14 appearances for the Pack in 4 years. While with the Packers, Zeke's victories were over Colts twice and Vikings once in 3 outings in 1965, Colts, Bears and Rams in 1966 and Falcons, Lions and 49'ers in 1967. In his last year, he quarterbacked one victory over the Redskins, and tied the Lions.

**ZEKE BRATKOWSKI'S**  
**PASSING RECORD**

Years	Atts.	Comp.	Yds.	Ints.	Lg.	TDs
1954	130	67	1087	17	71t	8
1955	6					
1957-60	507	196	2552	41	67t	16
1961-63	530	279	3551	35	84t	20
1963 (7 games)	12	4	96	3	64	1
1964 (7 games)	36	19	258	1	33t	1
1965	48	21	348	4	80t	3
1966	64	36	569	2	74	4
1967	94	53	724	9	86t	5
1968	126	68	835	7	72t	3



**DICK EVANS**  
**ASSISTANT COACH —**  
**DEFENSIVE SECONDARY**

In April of 1970 the Green Bay Packers hired Dick Evans, a veteran of 14 years coaching experience in the National Football League as their Defensive Secondary coach, it was announced today.

Evans, born May 31, 1918 in Chicago, Illinois, was a graduate of the University of Iowa where he was a member of the famous 1939 team, known as the Iowa Ironmen.

Dick played end for the Packers in 1940 and 1943 and with the then Chicago Cardinals from 1941-2. With the onset of WW II, Dick coached several Marine and Navy teams in San Diego, Santa Barbara, El Toro (Cal.) and Itsugi, Japan. Following his service hitch, Evans coached collegiately at Long Beach City College in Los Angeles, Loyola of Los Angeles and the University of Nevada before turning to the professional ranks with the Chicago Cards in 1952. From 1955-58 Dick coached at Washington under Joe Kuharich and then went to Notre Dame with Joe in 1959. In 1960 Evans was an assistant to Paul Brown with the Cleveland Browns from 1960-1963 and then rejoined Kuharich at Philadelphia from 1964-68. Dick spent the 1969 season as a full time scout for the Packers on the East Coast before being named the Defensive Secondary Coach with Green Bay in 1970.

He is married and has 2 sons and 1 daughter.



**FORREST GREGG**  
**ASSISTANT COACH —**  
**OFFENSIVE LINE**

Forrest Gregg was named an assistant coach by Phil Bengtson in February of 1969 following 12 seasons with the Green Bay Packers as an offensive tackle. In those twelve years, Forrest was named to the All-Pro Team eight times and played in five Pro Bowl games. In 1965 he was doubly honored by being selected All Pro at both offensive guard and tackle. Forrest was born Oct. 18, 1933 in Birthright, Texas and attended Southern Methodist University where he was twice named to the All-SWC Team as well as captain of the SMU team his senior year.

Green Bay drafted Gregg in the second round in 1956 and he missed the '57 campaign due to military service. In addition to his All Pro and Pro Bowl honors, Gregg also received the 1,000 Yard Foundation's Best Blocker Award in 1965 and following the 1968 season was named the Packers' Outstanding Lineman by the Wisconsin Pro Football Writers.

In 1969 Gregg served as both a player and coach and holds the present record for consecutive starting assignments with 173.



**DAVE HANNER**  
**ASSISTANT COACH —**  
**DEFENSIVE LINE**

After playing for the Green Bay Packers for 13 seasons, Dave Hanner switched to the coaching ranks in 1965 working with the Packers' Front Four.

As a player, Dave was named All-Pro five times and was twice selected to play on the West Pro Bowl Team.

A native of Parkin, Arkansas, Hanner played his collegiate football at the University of Arkansas where he was twice named to the All-Southwest Conference Team.

The Green Bay Packers drafted Hanner in the fifth round in 1952 and he played on the Western Divisional Title Team of 1960 as well as the World Champion Teams of 1961 and 1962. Between seasons as an active player, Dave worked as a soil conservationist in West Memphis, Arkansas, before moving to Green Bay in 1964.



**BOB SCHNELKER**  
**ASSISTANT COACH —**  
**PASSING GAME**

The Green Bay Packers' air attack is coached by Bob Schnelker, a nine year veteran as a player in the National Football League.

Bob played his collegiate football at Bowling Green University and was a 17th round draft choice of the Cleveland Browns in 1953.

He played with the New York Giants at tight end from 1954 to 1960 and finished his career in 1961 with Pittsburgh and Minnesota.

In 1963 he coached the Ram receivers and in February of 1964 joined Vince Lombardi under whom he had played at New York from 1954 to 1958.

As a player, Bob was a two time performer in the Pro Bowl, enjoying his finest season in 1959 when New York won the first of two consecutive Eastern Conference Crowns and five in a period of six years.



**RAY WIETCHA**  
**ASSISTANT COACH —**  
**RUNNING GAME**

Ten year New York Giant veteran Ray Wietcha is in charge of the Packers' running game.

As an active player with the Giants, Ray played in 133 consecutive games and was rated one of the best blockers in the NFL. He was named to the All-Pro Team five times and played on 4 Eastern Conference Pro Bowl Teams. In 1963 he joined the Los Angeles Rams as offensive line coach, where he served for two years before coming to Green Bay.

Collegiately, Ray was an All-Big Ten center at Northwestern University where he was an 11th round future draft choice of the New York Giants in 1953. After graduation he had a brief baseball tryout before returning to football.

The 1970 Green Bay Packers Press Book is published by Tom Johnson Promotion Services of Milwaukee for distribution by Wisconsin and Upper Michigan Ford Dealers.



**PAT PEPLER**  
**PLAYER PERSONNEL**

A large portion of credit for the discovery and development of Packer youth goes to Personnel Director Pat Pepler, who is in charge of all scouting and player selection in the college draft.

Every year, Pepler sifts through the prospective pro prospects from the collegiate and minor football leagues and evaluates candidates for try-outs with the Packers.

A three sport star at Shorewood (Wisc) high school, Pepler attended Michigan State University where he lettered in baseball and basketball. After graduating in 1948, Pepler played pro baseball briefly before beginning a successful career coaching in the East Lansing area. He coached state championship teams in football before taking a position as assistant coach at North Carolina for 8 years, working with centers and linebackers. In 1962 he switched to Wake Forest and in 1963 came to Green Bay, replacing Dick Voris as Director of Player Personnel.

**1969-70 CAPSULE  
SUMMARY ON PAGE 62**



**NFL HALL OF FAME  
CANTON, OHIO**

- Arnie Herber, B, 1931-41 (Regis)  
Clarke Hinkle, B, 1931-41  
(Bucknell)  
Cal Hubbard T, 1929-35 (Geneva)  
Don Hutson, E, 1935-45  
(Alabama)  
Walt Kiesling, T, 1935-36  
(St. Thomas)  
Curley Lambeau, B, 1921-30  
(Notre Dame)  
John "Blood" McNally, B,  
1928-36 (St. John's)  
Mike Michalske, G, 1929-37  
(Penn State)  
Em Tunnell B, 1959-61 (Iowa)

**WISCONSIN HALL OF FAME**

Howard "Cub" Buck	T	1921-25
Lavern Dilweg	E	1927-34
Joseph "Red" Dunn	B	1927-31
Arnie Herber	B	1931-41
Clarke Hinkle	B	1934-41
Don Hutson	E	1935-45
E. L. Curley Lambeau	B	1921-30; 1919-49 (coach)
Vern Lewellan	B	1924-32
Johnny "Blood" McNally	B	1928-36

# TORINO

...the Ford that gives  
you better ideas for less



See them all at your  
Ford Dealers



## 1970 PACKERS ROSTER



### LIONEL ALDRIDGE — 82

**Defensive End — Utah State**

**Height 6-4, Weight 245**

**Born in Evergreen, La., Feb. 14, 1941**

8th year in pro ball . . . Eighth starter with Packers at right defensive end . . . Fourth round choice for 1963 . . . All-Skyline Conference tackle and Co-Captain of Utah State . . . Played in East-West Shrine, Hula, Gotham and All-American Bowl games . . . Sociology Major . . . Tied for club lead in fumble recoveries in 1966 . . . Works for WTMJ radio and TV in Milwaukee during off-season . . . Sporting News All-Pro 1964. Missed 3 pre-season and 2 league games in 1967 with broken leg. Started every game after being out only 5 weeks. Considered most consistent defensive lineman on squad. Residence: Milwaukee.



### DONNY ANDERSON — 44

**Running Back — Texas Tech**

**Height 6-3, Weight 220**

**Born in Borger, Texas, May 16, 1943**

5th year in pro ball . . . Drafted first as future in 1964 . . . Consensus All-American for two years . . . Sporting News Co-Player of the Year 1965 . . . In 30 games rushed 526 times for 2280 yds., caught 105 passes for 1327 yds. and 12 TDs, punted 149 times for 38.2 yd. ave., returned 56 kickoffs for 1309 yds., scored 28 TDs for career total of 168 points . . . All-SWC three years . . . SWC Back of the Year 1964 and 1965 . . . Outstanding player of 1965 Gator and Hula Bowl games . . . Physical Education Major . . . Used mainly on kickoff and punt return teams in 1966 . . . Broke into starting lineup midway through 1967 season . . . Scored 4 TDs in first starting assignment against Cleveland in 1967. Packers leading rusher in 1968 . . . played in 1969 Pro Bowl Game . . . Voted Most Valuable Packer Back by Wis. Pro Football Writers in 1968 . . . Missed early part of 1969 season with broken ribs . . . Had best day of career vs. Falcons in 1969 rushing 18 times for 114 yards and 1 TD. Residence: Dallas, Texas.

## ANDERSON'S FOUR YEAR RECORD

Year	RUSHING					RECEIVING				
	Atts.	Yds.	Long.	Ave.	Tds.	No.	Yds.	Long.	Ave.	Tds.
1966	25	104	15	4.3	2	2	33	22	15.5	1
1967	97	402	40	4.1	6	22	331	31	15.0	3
1968	170	761	42	4.5	5	25	333	47	13.3	1
1969	87	288	16	3.3	1	14	308	...	22.0	1
Totals:	378	1555	42	4.1	14	63	1005	...	15.9	6

Year	KICKOFF RETURNS					PUNT RETURNS				
	No.	Yds.	Long.	Ave.	Tds.	No.	Yds.	Long.	Ave.	Tds.
1966	23	533	61	23.2	0	6	124	77t	20.7	1
1967	11	226	30	20.6	0	9	98	43	10.9	0
1968	..	..	..	..	..	..	..	..	..	..
1969	..	..	..	..	..	..	..	..	..	..
Totals:	34	759	61	22.3	0	15	222	77t	14.8	1

**KEN BOWMAN — 57****Center — Wisconsin****Height 6-2, Weight 235****Born in Milan, Ill., Dec. 15, 1942**

7th year in pro ball . . . Packers eighth round draft choice for 1964 season . . . Won starting position rookie year . . . Injured shoulder in 1966 pre-season schedule but played most of game against Kansas City in World Title Game . . . Returned to starting lineup in 1967 . . . Sociology Major . . . attends law school during off-season . . . one of hardest workers on squad and most under-rated performers in League . . . Player Representative . . . Residence: DePere, Wis.

**DAVE BRADLEY — 61****Guard — Penn State****Height 6-4, Weight 245****Born in Burnham, Pa., Feb. 13, 1947**

2nd year in pro ball . . . Second round draft choice . . . 5.0 speed in 40 . . . Excellent pass blocker with quick feet and good power . . . played in Orange Bowl, American Bowl, E-W Shrine Game, and College All-Star game . . . active for 4 games in 1969 . . . Residence: Green Bay, Wisconsin.

**BOB BROWN — 78****Defensive End — Arkansas A.M. & N.****Height 6-7, Weight 265****Born in Bonita, La., Feb. 23, 1940**

5th year in pro ball . . . Free agent who played 1964 and 1965 seasons with Wheeling Ironmen of Continental League . . . Played 8 games for Toronto in Canadian League in 1965 . . . Had try-outs with 49'ers in 1964 and '65, lasting until last cuts . . . Started first game against Lions in 1966 for Packers . . . Broke both arm and leg during 1968 season and missed 8 entire League games. Started or played in most of remaining 6 games at both tackle and end . . . Packers best defensive lineman in 1969 . . . Played every game . . . Excels on short yardage situations. Residence: W. Memphis, Ark.

**FRED CARR — 53****Linebacker — Univ. of Tex. at El Paso****Height 6-5, Weight 235****Born Aug. 19, 1946 — Phoenix, Ariz.**

3rd year . . . Packers first #1 draft choice for 1968 . . . Selected in New Orleans place as part of Taylor deal . . . Rated top college prospect for 1968 . . . Runs 40 in 4.6 in gear, 100 in 10.2 . . . Sporting News and NEA All-American at UTEP . . . Played in Sun and Senior Bowl Games . . . Has the potential to play anywhere but his best position is at Linebacker . . . Intercepted Cowboy aerial in first play as a pro . . . Named outstanding rookie of 1968 by Wis. Pro Football Writers . . . Played some defensive end in 1969. Residence: Phoenix, Ariz.

**JIM CARTER — 50****Linebacker — Minnesota****Height 6-3, Weight 230****Born in St. Paul, Minn., Oct. 18, 1948**

First year in pro ball . . . Packers third round draft choice for 1970 . . . 4.8 speed in 40; 5.8 in 50 . . . played fullback in college . . . big, strong boy . . . excellent blocker . . . determined runner . . . fine leader . . . good hands . . . aggressive, reckless . . . played college hockey . . . captain of Minnesota team senior year . . . played in North-South Game.

**MIKE CARTER — 36****Wide Receiver — Sacramento State****Height 6-1, Weight 208****Born in San Francisco, Calif., Feb. 18, 1948**

First year in pro ball . . . Packers fifteenth round draft choice for 1970 . . . 4.8 speed in 40 . . . Attended San Francisco City College . . . Caught 60 passes for 1,106 yards and 14 TDs in 10 games in 1969 . . . good hands, fine character . . . Relies primarily on speed to get open . . . caught 113 passes for 18 career TDs . . . second team Little All-American . . . native of San Francisco, California.

**JOHN DAVID "JACK" CLANCY — 80****Wide Receiver — University of Michigan****Height 6-1, Weight 195****Born in Humbolt, Iowa, June 18, 1944**

4th year in pro ball . . . came to Packers when Miami signed Marv Fleming, who had played out his option . . . #3 round draft choice of Dolphins as a red shirt in 1966 . . . Captained University of Michigan team and was named to All-American Team . . . Played quarterback freshman year and halfback sophomore year . . . played in East-West and College All-Star games . . . set Big Ten receiving record with 50 catches for 698 yards in senior year . . . originally lived in Green Bay where many of his fathers relatives still reside . . . moved to Detroit area when in high school . . . set AFL Rookie receiving record with 67 . . . played in 1968 AFL All-Star Game . . . missed 1968 season with knee injury sustained against Colts in pre-season game . . . missed some of 1969 season with recurrence of knee problem . . . Residence: Miami, Florida.

## CLANCY'S RECEIVING RECORD

Year	Caught	Yards	Ave.	Long.	TDs
1967	67	868	13.0	44	2
1968	..	..	..	..	..
1969	21	289	13.8	50	1
Totals:	88	1157	13.1	50	3

**CARROLL DALE — 84**

Wide Receiver — Virginia Tech

Height 6-2, Weight 200

Born in Wise, Va., on April 24, 1938

11th year in pro ball . . . Drafted in eighth round by Rams in 1960 . . . Look All-American team and NEA Player of the Year in Southern Conference in 1959 . . . Educator Major . . . Came to Packers from Rams prior to '65 season for linebacker Dan Currie . . . In 1966 caught 37 for 23.7 yard ave. and 7 TDs . . . Per catch average second highest in League . . . Caught 47 yard TD pass vs. Browns in '65 Title game and 51 yard TD bomb against Dallas in '66 . . . 4 catches for 59 yards against Kansas City and 4 for 43 vs. Oakland in AFL-NFL Title games . . . Most productive year in 1968 with 42 catches for 818 yards and 8 TDs . . . Packers leading scorer in 1968 with 48 points . . . Named to West Pro Bowl Team 1969 & 70 . . . Packers leading receiver in 1969 with 45 for 879 yds. and 6 TDs . . . Best day Dec. 12 vs. Cards when he caught 9 for 195 yds. and 2 Tds . . . Caught winning TD in 1970 Pro Bowl game . . . FCA member . . . Endorses Super-Touch hand lotion. Residence: Bristol, Tenn.

## DALE'S 9 YEAR RECORD

Year	No.	Yds.	Long.	Ave.	TDs
1960	19	336	63	17.7	4
1961	35	561	68t	16.0	2
1962	29	584	80t	20.1	3
1963	34	638	66	18.8	7
1964	32	544	44	17.0	2
1965	20	382	77t	19.1	2
1966	37	876	83t	23.7	7
1967	35	738	86t	21.1	5
1968	42	818	63t	19.5	8
1969	45	879	48t	19.5	6
Totals:	329	6356	86t	19.3	45

**KEN ELLIS — 48**

Defensive Back — Southern Univ.

Height 5-10, Weight 190

Born in Woodbine, Ga., Sept. 27, 1947

First year in pro ball . . . Packers fourth round draft choice in 1970 . . . played flanker in college as well as halfback on offense . . . led nation in punt returns in 1968 . . . great acceleration . . . 4.5 speed in 40 . . . played in Senior Bowl . . . sure tackler.

**JIM FLANNIGAN — 55**

Linebacker — Pittsburgh

Height 6-3, Weight 240

Born in Pittsburgh, Pa., April 15, 1945

4th year . . . Drafted in Packers regular second round for 1967 season . . . Voted most valuable player at Univ. of Pittsburgh All-East, 1966 . . . Tough and determined tackler . . .

UPI all rookie team 1967 . . . Used primarily at middle line-backer, but has speed to play outside . . . College All-star middle linebacker . . . Excels on special teams . . . Political science major in college . . . Missed some duty in 1967 while in Army. Residence: Green Bay, Wisconsin.

## GALE GILLINGHAM — 68

**Offensive Guard — Minnesota**

**Height 6-3, Weight 265**

**Born in Madison, Wisc., Feb. 3, 1944**

5th year in pro ball . . . Regular first round choice of Packers for 1966 . . . Played fullback and tackle at Minnesota . . . 5.9 speed in 50 . . . High school discus champion . . . All-State football . . . Played in East-West Shrine game, Senior Bowl, Coaches All-American Game and was selected to play in All-Star game . . . Education Major . . . Started final two games of 1966 season against Colts and Rams and all pre-season and League games since '67 . . . Switched from left to right guard in 1969 . . . Second team All-Pro in 1968 . . . NEA All-Pro in 1969 & 1970 Pro Bowl member. Residence: Little Falls, Minn.

## JIM GRABOWSKI — 33

**Fullback — Illinois**

**Height 6-2, Weight 220**

**Born in Chicago, Ill., Sept. 9, 1944**

5th year in pro ball . . . First round draft choice from Lions in Ron Kramer trade . . . Sporting News Co-Player of the Year in 1965 . . . Consensus All-American at Illinois . . . Finance Major . . . Broke all Red Grange's records at Illinois and 6 Big Ten marks . . . Gained 2878 yards in 3 years . . . Gained more than 125 yards in 6 of ten games senior year and 1258 yards overall . . . Gained 239 yards vs. Wisconsin for career high in 1964 . . . Academic All-American . . . Started in 1967 and despite being sidelined after eighth game with knee injury was still leading Packer ground gainer for 1967 . . . Set club record for most rushing attempts with 32 carries against Bears. Residence: Palatine, Illinois.

### GRABOWSKI'S RECORDS

Year	RUSHING				RECEIVING				SCORING	
	Atts.	Yds.	Ave.	Long.	TDs	Caught	Yds.	Long.	TDs	Total Pts.
1966	29	127	4.4	36t	1	4	13	7	0	6
1967	120	466	3.9	24	2	12	171	53	1	18
1968	135	518	3.8	25	3	18	210	67t	1	24
1969	73	261	3.6	22	1	12	98	25	1	12
Totals:	357	1372	3.8	36t	7	46	492	67t	3	60

## DAVE HAMPTON — 25

**Running Back — Wyoming**

**Height 6-0, Weight 210**

**Born in Ann Arbor, Mich., May 7, 1947**

2nd Year in pro ball . . . drafted ninth from Wyoming where he was All-WAC selection senior year . . . 4.7 speed in 40 in gear . . . average 5.5 yds. per carry senior year and 4.8 overall . . . teamed with AFL Rookie of Year Jim Kiick . . . Packers second ground gainer in 1969 pre-season and 3rd in regular season . . . rated best conditioned athlete on squad in 1969 . . . Voted by Wis. Pro Football Writers as Most Valuable Rookie in 1969 . . . Works for Pabst Brewing in off-season. Residence: Milwaukee, Wis.

## HAMPTON'S RECORDS

RUSHING						RECEIVING				
Year	Atts.	Yds.	Long.	Ave.	Tds.	No.	Yds.	Long.	Ave.	Tds.
1969	80	365	53	4.6	4	15	216	50	14.4	2

KICKOFF RETURNS					PUNT RETURNS					
Year	No.	Yds.	Long.	Ave.	Tds.	No.	Yds.	Long.	Ave.	Tds.
1969	22	582	87t	26.5	1	..	..	..	..	..

**KEVIN HARDY — 73****Defensive Tackle — Notre Dame****Height 6-5, Weight 260****Born in Los Altos, Calif., July 28, 1945**

2nd year in pro ball . . . drafted 1st by New Orleans in 1968 and sent to San Francisco in payment for Dave Parks . . . came to Packers just prior to 1970 season from 49ers for a draft choice . . . 2 time All-American DT at Notre Dame . . . also punted for Irish . . . lettered three times in football, once in basketball, twice in baseball . . . MVP in Coaches' All-American game . . . selected to play in Chicago All-Star game against Packers but missed game with injured ankle . . . All-American high school athlete in 3 sports, hobby is golf.

**DOUG HART — 43****Defensive Halfback — U. Tex. at Arlington****Height 6-1, Weight 190****Born in Handley, Texas, June 3, 1939**

7th year in pro ball . . . Signed by St. Louis as free agent for 1963 season . . . Picked up on waivers by Packers during pre-season . . . Played on taxi squad 1963 and made squad in 1964 . . . Started at right corner in 1965 . . . Selected on the All-Texas college team of 1962 . . . Pre-Law student . . . Scored on fumble recovery and run against Vikings in 1965 . . . Started at corner and safety in 3 games in 68 . . . Had 1 TD on int. called back vs. Redskins in 68 . . . Excellent speed . . . Represents Arctic Cat Snomobiles in off-season. Residence: Green Bay, Wisconsin.

**HART'S INTERCEPTION RECORD**

Year	No.	Yds.	Ave.	TDs.	Total Pts.
1964	1	0	0.0	0	0
1965	4	29	7.3	0	6
1966	1	40	40.0	1	6
1967	0	0	0.0	0	0
1968	1	24	24.0	0	0
1969	3	156	52.0	1	6
<b>Totals:</b>	<b>10</b>	<b>249</b>	<b>24.9</b>	<b>2</b>	<b>18</b>

**BILL HAYHOE — 77****Tackle — USC****Height 6-8, Weight 260****Born in Van Nuys, Calif., Sept. 6, 1946**

2nd year in pro ball . . . drafted fifth in 1969 after playing as defensive end at USC senior year . . . runs 40 in 5.0 . . . played flanker in high school, tight end in junior college and both offensive and defensive tackle at USC . . . impressed coaches immediately in rookie year . . . Will be used as reserve center in 1970 . . . Works for Bertrand's Sporting Goods. Residence: Green Bay, Wisconsin.





## JOHN HILTON — 86

**Tight End, Wide Receiver — Richmond**

**Height 6-5, Weight 225**

**Born in Albany, N. Y., March 12, 1942**

6th year in pro ball . . . Acquired prior to '70 season from Steelers for DB John Rowser . . . Originally drafted #6 by Lions as a future but traded to Pittsburgh when Detroit signed Ron Kramer from Packers . . . Named All-State at Univ. of Richmond and All-Southern Conference . . . Played in Senior Bowl and Blue-Gray games . . . 14 career TDs at Richmond . . . Top ranked amateur golfer . . . Good blocker with excellent speed and hands. Residence: Pittsburgh, Pa.

### HILTON'S RECEIVING RECORD

Year	Passes Caught	Yds.	Ave.	TD
1965	4	32	8.0	0
1966	46	603	13.1	4
1967	26	343	13.2	5
1968	20	285	14.3	1
1969	12	231	19.3	0
Totals:	108	1494	14.9	10



## DICK HIMES — 72

**Offensive Tackle — Ohio State**

**Height 6-4, Weight 245**

**Born May 25, 1946 — Canton, Ohio**

3rd year . . . Packers second #3 round choice for 1968 . . . Played offense Senior year only, yet was selected to play in East-West Shrine Game . . . Named to All-Big Ten Team . . . Good drive blocker and excellent on pass protection . . . Excellent attitude and hustle . . . Played majority of last 3 games of 1969 . . . Plays special teams well. Residence: Green Bay, Wis.



## DON HORN — 13

**Quarterback — San Diego State**

**Height 6-2, Weight 195**

**Born in Gardena, California, March 9, 1945**

4th year . . . Drafted as Packers number one choice from San Diego State after he led Aztecs to number one small college rating . . . Little All-American . . . Extremely quick delivery . . . Completed 257 of 459 for 3,922 yards and 39 TDs in 2 years . . . Ran from shotgun and pro-I in college . . . Spent all but last game of '68 season in service . . . Quarterbacked victory over Bears in '67 season finale . . . Started last 4 games of '69 season and won 3 . . . Set Packer passing records in last game vs. Cards by completing 22 of 31 for 410 yards and 5 TDs. Residence: San Diego, California.

Year	Att.	Comp.	Yds.	Pct.	Long.	Int.	TDs
1967	24	12	171	50.0	29t	1	1
1968	16	10	187	62.5	67t	0	2
1969	168	89	1505	53.0	60t	11	11
Totals:	208	111	1863	53.4	67t	12	14



### ERVIN HUNT — 45

**Defensive Back — Fresno State**

**Height 6-2, Weight 190**

**Born July 1, 1947, in Sacramento, Calif.**

First year in pro ball . . . Packers sixth round draft choice for 1970 . . . 4.5 in 40. Smooth runner who backpedals well . . . plays ball . . . good acceleration . . . good hands . . . fine character . . . can play either safety or corner . . . track man who runs high hurdles in 14.1 . . . All-American in High School track . . . 14 interceptions for 209 yards and one TD in college career . . . captain of college track and football teams . . . All-Coast and All-Conference. Residence: Fresno, Calif.



### BOB JETER — 21

**Defensive Cornerback — Iowa**

**Height 6-1, Weight 200**

**Born in Union, S.C., May 9, 1937**

7th season in NFL . . . Business Administration Major . . . Packers second round draft choice in 1960 but decided to play in Canada . . . Sat out 1962 season and joined Packers in 1963 . . . Backed up McGee and Dowler as receiver in 1964 . . . Got starting chance against Browns in 1965 Title game . . . Started every game at right corner in 1966 and 1967 . . . Scored on 46 yard interception against Colts in League opener and on 75 yard interception against Rams in season finale in 1966 . . . Overall, had 5 interceptions for 142 yards and a 28.4 yard average per theft . . . Unanimous All-Pro 1967 . . . Pro Bowl 1967 & 70 . . . During off-season works with youth at Pittsburgh Social Center. Residence: Pittsburgh, Pennsylvania.

#### JETER'S INTERCEPTION RECORD

Year	No.	Yds.	Ave.	Long.	TD
1966	5	142	28.4	75t	2
1967	8	78	9.8	25	0
1968	3	35	11.7	29	0
1969	3	30	10.0	30	0
Totals:	19	285	15.0	75t	2



### LARRY KRAUSE — 30

**Running Back — St. Norbert**

**Height 6-0, Weight 208**

**Born in Greenwood, Wis., April 22, 1948**

First year in pro ball . . . seventeenth round draft choice of Packers for 1970 . . . 4.9 in 40 . . . holds school records for rushing yardage . . . senior year rushed 251 times for 1,325 yards and a 5.3 average and caught 18 passes for 216 yards and 1 TD . . . aggressive, good leader . . . good hands and fine football ability . . . plays special teams especially well.



## DALE LIVINGSTON — 37

Kicker — West. Michigan

Height 6-0, Weight 210

Born in Plymouth, Mich., March 12, 1945

Third year in pro ball . . . third round draft choice of Cincinnati Bengals in 1968 . . . won job as Bengals punter and place kicker rookie year but had to miss final two games of season with Marine Corps Reserves . . . excellent punter also . . . picked up by Packers as free agent prior to 1970 season.

### LIVINGSTON'S STATISTICS

Year	FG	FGA	Long	Punts	Yds.	Ave.	Xpts.	Points
1968	13	26	49	70	3036	43.4	20/20	59
1969	0	0	0	70	2769	39.6	0/0	0



## BILL LUECK — 62

Offensive Guard — Arizona

Height 6-3, Weight 250

Born April 7, 1946 — Buckeye, Ariz.

3rd year . . . Selected by Packers in first round of 1968 draft . . . All Conference W.A.C. . . . Selected to play in All-Star Game against Packers . . . Good quickness . . . Pass blocks well . . . Especially effective pulling . . . Started every game at left guard in 1969 . . . Weight lifting devotee. Residence: Green Bay, Wis.



## AL MATTHEWS — 29

Defensive Back — Texas A&I

Height 6-0, Weight 190

Born in Austin, Texas, Nov. 7, 1947

First year in pro ball . . . second round draft choice for 1970 . . . 4.7 speed in 40; 9.8 in 100 . . . good hitter, courageous, good reaction to ball . . . excellent character . . . good citizen, clean-cut and intelligent . . . extremely quick and fast . . . quick feet . . . good athlete . . . can play both corner and safety . . . second team Little All-American and first team All-Lone Star conference . . . played offense first two collegiate seasons and was used to return punts and kickoffs . . . Vice-President of Student Body senior year . . . Health and P.E. major.



## MIKE MCCOY — 76

Defensive Tackle — Notre Dame

Height 6-5, Weight 280

Born Sept. 6, 1948 in Erie, Pa.

First year in pro ball . . . number one draft choice for 1970 . . . second player in 1970 college draft . . . 5.1 speed in 40 . . . top rated defensive player in nation . . . excellent pursuit man with top rated lateral movement, quickness, balance, character and attitude . . . good pass rusher and tackler . . . coached to read and react primarily in College . . . hustles all the time . . . 100% player . . . very strong, good intelligence . . . makes the big play because he's always near the ball . . . "A bell ringer" . . . AP, UPI, NEA and consensus All-American . . . played in East-West Shrine Game and Cotton Bowl as well as Coaches All-American and Chicago All-Star Games . . . Pennsylvania High School wrestling champion . . . wrestled two years at Notre Dame . . . Economics major . . . expects to attend law school.



### **RICH McGEORGE — 81**

**Tight End — Elon College**

**Height 6-4, Weight 235**

**Born in Roanoke, Va., Sept. 14, 1948**

First year in pro ball . . . Packers second number one draft choice in 1970 . . . 4.9 speed in 40. Top rated tight end in CEPO Scouting Combine . . . plays basketball and golf . . . great hands and excellent blocker . . . catches ball well in traffic and runs well after catch . . . breaks tackles . . . captain of college team and good leader . . . a student of the game . . . aggressive . . . honors: NAIA All-American, AP Small College All-American, line-man of the year Carolina Conference . . . played on South squad in North-South Game . . . caught 224 passes for 3486 yds. and 31 TDs in 4 years at Elon.



### **RICH MOORE — 70**

**Defensive Tackle — Villanova**

**Height 6-6, Weight 280**

**Born in Wycliffe, Ohio, April 26, 1947**

2nd year in pro ball . . . drafted first in 1969 . . . started first pre-season game ever played and started all 1969 season . . . played in College All-Star and Coaches All American Games in 1969 as well as North-South, American and Senior Bowl post-season games . . . runs 40 in 5.1 . . . once scored in college on 70 yard fumble return . . . used as strong side tackle in flip-flop defense. Residence: Philadelphia, Pa.



### **RAY NITSCHKE — 66**

**Middle Linebacker — Illinois**

**Height 6-3, Weight 240**

**Born in Elmwood Park, Ill., Dec. 29, 1936**

13th year in pro ball . . . Packers third round draft choice in 1957 . . . Played fullback at Illinois, carrying 79 times for a 6.5 yard ave. . . . Physical Education Major . . . Missed several games in 1961 due to military service . . . Voted MVP of Championship game of 1962 in Yankee Stadium against Giants . . . Broke arm against Lions on Thanksgiving day 1963 . . . AP and UPI All-Pro 1964, UPI All-Pro 1965 and AP, UPI, and NEA All-Pro 1966 . . . 2 interceptions for 44 yards in 1966 . . . 1 interception for 20 yd. TD vs. Lions in 1967 . . . Credited with 9 tackles against Oakland in AFL-NFL Title Game in 1968 . . . Voted most outstanding linebacker for 1967 by NFL players . . . 2 interceptions in 1968, including game saving theft against Bears in season finale . . . Named to the NFL's All 50 Year Team as the outstanding linebacker. Residence: Green Bay, Wisconsin.



### **FRANK PATRICK — 10**

**Quarterback — Nebraska**

**Height 6-7, Weight 225**

**Born in Derry, Pa., March 11, 1947**

First year in pro ball . . . Packers second tenth round pick in 1970 . . . 4.9 speed in 40 . . . drafted as a tight end but when Vets did not report was used as QB, where he played his first 3 years at Nebraska . . . big, strong and intelligent.



## FRANCIS PEAY — 71

**Offensive Tackle — Missouri**

**Height 6-5, Weight 250**

**Born in Pittsburgh, Pa., May 23, 1944**

5th year in NFL . . . acquired in off-season trade with New York Giants prior to '68 season for Crutcher and Wright . . . number one draft choice of Giants for 1966 . . . hampered by injuries when with Giants . . . attended Cameron Jr. College before attending Univ. of Missouri . . . played both ways in junior year . . . concentrated on offense senior year . . . named All-American senior year and played in Sugar and Senior Bowl games . . . Sociology major. Residence: Pittsburgh, Pennsylvania.



## DAVE ROBINSON — 89

**Outside Linebacker — Penn State**

**Height 6-3, Weight 245**

**Born in Mt. Holly, N.J., May 3, 1941**

8th year in pro ball . . . Packers first round draft choice for 1963 . . . Played guard, tackle and end at Penn State . . . Civil Engineering Major . . . Played in Hula Bowl, Gator Bowl, All-American Game and All-Star Game . . . Named to All-American team by AP, UPI, NEA, Look, Time and Post magazines . . . Moved into starting linebacker position after Nitschke's injury in 1963 Thanksgiving game . . . Started in 1964 but knee injury hobbled him . . . Started again in 1965 and 1966 . . . Plays left outside backer . . . Sporting News All-Pro team 1966 . . . Played in 1967, 1968 and 1970 Pro-Bowl Games . . . Most Valuable lineman in Pro Bowl 1968 . . . 5 interceptions for 60 yards in '66 and recovered fumble to ice Western Division Crown against Baltimore . . . Pressured Dallas QB into throwing interception in NFL Title game in final goal line stand . . . All-Pro AP, UPI and NEA 1967 . . . Voted outstanding defensive player in 1969 by Wis. Pro Football Writers . . . Works for Schlitz Brewing Company. Residence: Milwaukee, Wisconsin.



## JOHN SPILIS — 85

**Wide Receiver — No. Illinois**

**Height 6-3, Weight 205**

**Born in Chicago, Ill., Oct. 14, 1947**

2nd year in pro ball . . . Drafted third in 1969 . . . Kickoff and punt return specialist in college . . . Runs 40 in 4.7 . . . 9.7 speed in 100 . . . caught 23 passes for TDs for collegiate record . . . Basketball player also . . . Good competitor, good hands. Residence: DeKalb, Illinois.

### SPILIS'S RECEIVING RECORD

Year	No.	Yds.	Ave.	Long.	TD
1969	7	89	12.7	16	0



## BART STARR — 15

Quarterback — Alabama

Height 6-1, Weight 200

Born in Montgomery, Ala., Jan. 9, 1934

15th year in pro ball . . . Drafted by Packers in 17th round in 1956 . . . Broke in under Tobin Rote in 1957 . . . Shared position with Babe Parilli and Lamar McHan in 1958 . . . Started last 4 games in 1959 . . . Regular in 1960 . . . Winningest QB in pro football . . . 57 percent completion average over career . . . Quarterbacked Packers to Western Division Titles in 1960, 1961, 1962, 1965 and 1966 . . . World Titles in 1961, 1962, 1965 and 1966 . . . High School All-American . . . History Major . . . Has completed higher percentage of passes in career than any other NFL player and has lowest percentage interceptions . . . holds NFL record of 294 consecutive passes without an interception . . . NFL Leading passer 1962, 1964 and 1966 . . . Most Valuable Player in NFL 1966 . . . Voted MVP in AFL-NFL Super Bowl 1967 and 1968 . . . Played in Pro-Bowl 1961, 1962, 1963 and 1966 . . . All-Pro AP, UPI, and NEA 1966 . . . Jim Thorpe Award winner 1966 . . . Has gained over 2,000 yards passing 5 of last 8 years . . . Missed 5 games in 1963 with broken hand and 4 in 1967 with shoulder, rib and hand injuries . . . Missed total of 28 quarters with injuries in 1968 . . . 27 quarters in 1969 . . . Named one of ten outstanding young men for 1968 by Jaycees . . . Received Gladiator Award as outstanding citizen and NFL competitor . . . Member of Young Presidents Club . . . Owns Bart Starr's Huddle Restaurants . . . Represents Pepsi-Cola & Mercury in off-season sales promotion. Residence: Green Bay, Wisconsin.

### League Contests

### BART STARR'S 14 YEAR RECORD

Year	Atts.	Comp.	Yards	TDs	Int.	Ave.	Per Cent
1956	44	24	325	2	3	7.39	54.5
1957	215	117	1489	8	10	6.93	54.4
1958	157	78	875	3	12	5.57	49.7
1959	134	70	972	6	7	7.25	52.2
1960	172	98	1358	4	8	7.90	57.0
1961	295	172	2418	16	16	8.20	58.3
1962	285	178	2438	12	9	8.55	62.5
1963	244	132	1855	15	10	7.60	54.1
1964	272	163	2144	15	4	7.88	59.9
1965	251	140	2055	16	9	8.19	55.8
1966	251	156	2257	14	3	8.99	62.2
1967	210	115	1823	9	17	8.68	54.8
1968	171	109	1617	15	8	9.46	63.7
1969	148	92	1161	9	6	7.83	62.2
Totals:	2849	1644	22787	144	122	8.00	57.5

### NFL Title Games

Year	Comp.	Atts.	Per Cent	Yds.	TDs	Int.
1960	21	35	60.0	178	1	0
1961	10	17	58.8	164	3	0
1962	10	22	45.5	106	0	0
1965	10	19	52.6	147	1	1
1966	19	28	67.9	304	4	0
1967	14	24	58.3	191	2	0
Totals:	84	145	57.9	1090	11	1

### AFL-NFL Championship

Year	Comp.	Atts.	Per Cent	Yds.	TDs	Int.
1967	16	23	69.6	250	2	1
1968	13	24	54.2	202	1	0
Totals:	29	47	61.7	452	3	1

Come check the Better Ideas that make your Ford Dealer the Wagonmaster.



### CLEO WALKER — 52

Center-Linebacker — Louisville

Height 6-3, Weight 220

Born in Columbus, Ga., Feb. 7, 1948

First year in pro ball . . . Packers seventh round draft choice . . . brought to camp primarily to snap for kicks . . . played both linebacker and center in College . . . especially quick . . . intercepted two passes in pre-season game against Oakland.



### MALCOLM WALKER — 54

Center — Rice Univ.

Height 6-4, Weight 250

Born in Dallas, Texas, May 24, 1943

Fifth year in NFL . . . second round draft choice of Dallas Cowboys in 1965 . . . selected to play in College All-Star game . . . starter in 1968 and 1969 . . . 3 year regular at Rice playing both ways . . . twice All-Southwest Conference . . . All-American Academic team . . . Sporting News All-American . . . math major now working on masters in accounting . . . came to Packers as part of Adderley deal during 1970 pre-season. Residence: Dallas, Texas.



### CLARENCE WILLIAMS — 83

Defensive End — Prairie View A&M

Height 6-5, Weight 255

Born in Brazoria, Texas, Sept. 3, 1946

First year in NFL . . . drafted eleventh by Dallas in 1969 . . . taxed with Cowboys in 1969 and came to Packers with Mal Walker for Herb Adderley prior to 1970 season.



### GERALD WARREN — 37

Kicker — N. C. State

Height 6-0, Weight 180

Born in Elizabeth City, N. C., June 2, 1947

Tenth round draft choice of St. Louis Cardinals in 1969 . . . injured in driving accident on last day of training camp in 1969 . . . acquired by Packers as free agent during 1970 pre-season . . . at N. C. State kicked 45 of 46 conversions, 26 of 41 field goals in two collegiate seasons . . . missed only 2 field goals within 40 in college.

**PERRY WILLIAMS — 31****Running Back — Purdue****Height 6-2, Weight 219****Born in Cincinnati, Ohio, Dec. 11, 1946**

2nd year in pro ball . . . drafted fourth by Packers in 1969 . . . teamed with Lee Roy Keyes at Purdue . . . selected to play in American Bowl and East-West Shrine Games . . . runs 40 in 4.8 . . . good blocker and fine power runner . . . excellent pass receiver . . . plays specialty teams well . . . Works for Schlitz Brewing Co. Residence: Milwaukee, Wisconsin.

**PERRY WILLIAMS' RECORD**

Year	RUSHING						RECEIVING				
	Att.	Yds.	Ave.	Long.	TD	No.	Yds.	Ave.	Long.	TD	
1969	18	55	3.1	13	0	4	63	15.6	24	0	

**TRAVIS WILLIAMS — 23****Running Back — Arizona State****Height 6-1, Weight 212****Born in Richmond, Calif., Jan. 14, 1946**

4th year . . . drafted fourth in 1967 in Redskins place as part of Ron Rector trade in 1966 . . . Junior College 100 yard dash Champion running 100 in 9.3 . . . runs 40 in gear in 4.3 . . . attended Contra Costa Jr. College before entering Arizona State . . . had 4.0 rushing ave. at Arizona State . . . saw first action in 1967 returning kickoffs against Cards in 7th game of season . . . returned 1 for TD vs. Cards, 2 vs. Browns and 1 vs. Rams for 41.1 yard ave. and 4 TDs . . . led team in rushing last two games of 67 season and W. Div. Playoff against Rams . . . 2 TDs rushing against Rams in playoff, one on 46 yard sprint to tie score . . . UPI All-Rookie Team 1967 . . . Packers leading scorer and rusher in 1969 . . . Voted most valuable offensive player by Wis. Pro Football Writers 1969 . . . Works for Pabst Brewing Co. in off-season. Residence: Richmond, California.

**RUSHING****RECEIVING****KICKOFF RET.**

Year	Att.	Yds.	Ave.	Lg.	TD	No.	Yds.	Lg.	TD	No.	Yds.	Lg.	TD
1967	35	188	5.4	37	1	5	80	29	1	18	739	104t	4
1968	35	63	1.9	9	0	5	48	17	0	28	599	60	0
1969	129	536	4.2	39t	4	27	275	60t	3	21	517	96t	1
Totals:	199	787	4.0	39t	5	37	403	60t	4	67	1855	104t	5

**PUNT RETURN**

Year	No.	FC	Yds.	Ave.	Long.	TD
1967	0	0	000	00.0	00	0
1968	0	0	000	00.0	00	0
1969	8	3	189	23.6	83	1
Totals:	8	3	189	23.6	83	1

**WILLIE WOOD — 24****Defensive Safety — Southern California****Height 5-10, Weight 190****Born in Washington, D. C., Dec. 23, 1936**

11th year in pro ball . . . Wrote to Packers for try out . . . Signed as free agent . . . Quarterback at USC and defensive halfback . . . Sociology Major . . . Surest tackler on squad . . . Led NFL in punt returns in 1961, second in 1962 and 1963 . . . Led NFL in interceptions in 1962 with 9 . . . NEA All-Pro 1963,

AP, NEA and UPI All-Pro 1964, 1965, 1966 and 1967 . . . Sporting News All-Pro 1967 . . . Played in 1964, 1965, 1966, 1967, 1968, 1969 & 1970 Pro Bowl Games . . . Led Packers in punt returns in 1965 and 1967 . . . Broke open Super Bowl game in 1966 with 50 yard pass interception . . . Member of President's Council on Youth Fitness. Residence: Washington, D. C.

#### WOOD'S TEN YEAR RECORD

Year	Ints.	Yds.	Long.	TDs	Punt Ret.	Yds.	Long.	TDs
1960	0	0	0	0	16	106	33	0
1961	5	52	21	0	14	225	72	2
1962	9	132	37	0	23	273	65	0
1963	5	67	22	0	19	169	41	0
1964	3	73	42t	1	19	252	64	0
1965	6	65	28	0	13	38	14	0
1966	3	38	20t	1	22	82	13	0
1967	4	60	25	0	12	3	8	0
1968	2	54	35	0	26	126	16	0
1969	3	40	21	0	8	38	13	0
Totals:	40	581	42t	2	172	1312	72	2

#### PACKER HEAD COACHES

Earl "Curley" Lambeau 1921-1949

Coaching Record: 212-109-24

Winning Pct.: .615

Gene Ronzani 1950-1953

Coaching Record: 14-33-1

Winning Pct.: .292

Lisle Blackburn 1954-1957

Coaching Record: 17-31-0

Winning Pct.: .354

Ray "Scooter" McLean 1958

Coaching Record: 1-10-1

Winning Pct.: .083

Vince Lombardi 1959-1967

Coaching Record: 141-39-4

Winning Pct.: .766

Phil Bengtson 1968-1969

Coaching Record: 14-13-1

Winning Pct.: .500

#### PACKER ASSISTANT COACHES

Red Smith 1936-1943

Eddie Kotal 1942-1943

George Trafton 1944

Walt Kiesling 1945-1948

Don Hutson 1945-1948

Bo Molenda 1947-1948

Charley Broch 1949

Bob Snyder 1949

Tom Stidham 1949

Ray Nolting 1950

Dick Plasman 1950-1952

Tarz Taylor 1950-1952

Chuck Drulis 1951-1953

Ray "Scooter" McLean 1951-1957

Hugh Devore 1953

Tom Hearden 1954-1955, 1957

Lou Rymkus 1954-1957

Abe Stuber 1956

Earl Klapstein 1956

Jack Morton 1957-1958

Breezy Reid 1958

Ray Richards 1958

Nick Skorich 1958

Bill Austin 1959-1964

Norb Hecker 1959-1965

Phil Bengtson 1959-1967

Red Cochran 1959-1966

Dick Voris 1961-1962

Tom Fears 1962-1965

Ray Wietecha 1965-1970

Dave Hanner 1965-1970

Jerry Burns 1966-1970

Bob Schnelker 1966-1968

Tom McCormick 1967-1968

Wayne Robinson 1968-1969

Forrest Gregg 1968-1970

Zeke Bratkowski 1969-1970

Dick Evans 1970

# Your Ford Dealer separates the news from the noise!



## All-new Pinto

Sized and priced like little imports, gives you more room, more power, more stability. Pinto is quiet too and fun to drive.

## All-new LTD

Quieter than ever, Ford '71 LTD is longer, lower, more luxurious. New rooflines, new metal styling, new grille, too.

## All-new Mustang

Some cars add a strip of chrome and make noise about news. '71 Mustang is new from the ground up. You've got to see it.

# 1969

## GREEN BAY PACKERS

### FINAL — FOURTEEN GAME STATISTICS

\* = 1969 NFL LEADER

#### RESULTS

Packers	Opp.
17 Bears at Green Bay (50,861)	0
14 49'ers at Milw. (48,184)	7
7 Vikings at Minn. (60,740)	19
28 Lions at Detroit (58,384)	17
21 Rams at L. A. (78,947)	34
28 Falcons at G. B. (50,861)	10
38 Steelers at Pitts. (46,403)	34
6 Colts at Balt. (60,238)	14
7 Vikings at Milw. (48,321)	9
10 Lions at G. B. (50,861)	16
20 Giants at Milw. (48,156)	10
7 Browns at Cleve. (82,137)	20
21 Bears at Chicago (45,216)	3
45 Cardinals at G. B. (50,861)	28

#### TEAM STATISTICS

Packers	Opp.
242 Total First Downs	224
95 First Downs Rushing	103
122 First Downs Passing	207
25 First Downs Penalty	14
4068 Total Off. Yardage	3827
793 Number Off. Plays	880
5.1 Ave. Gain Per Play	4.4
1692 Net Yards Rushing	1982
432 Number Plays Rushing	485
3.9 Ave. Gain Per Rush	4.1
2376 Net Yards Passing	1845
2678 Gross Yards Passing	2133
34/302 Thrown/Yards	36/288
319 Passes Attempted	360
182 Passes Completed	177
8.1 Ave. Gain Per Pass	5.9
19/428 Int. By/Yards	17/252
31/21 Fumbles Lost	23/7
62/597 Penalties/Yards	64/733
29/258 Punts Ret./Yards	18/62
52/1194 Kickoffs Ret./Yds.	48/1078

#### SCORES BY QUARTERS

	One	Two	Three	Four	Total
G. B.	48	72	59	91	269
Opp.	53	87	55	26	221

#### RUSHING

	No.	Yds.	Ave.	Long.	TDs
T. Williams	129	536	4.2	39	4
Anderson	87	288	3.3	16	1
Hampton	80	365	4.6	53	4
Grabowski	73	261	3.6	22	1
Pitts	35	134	3.8	13	0
P. Williams	18	55	3.1	13	0
Starr	7	60	8.6	18	0
Horn	3	-7	0.0	2	1

#### RECEIVING

	No.	Yds.	Ave.	Long.	TDs
Dale	45	879	19.5	48	6
Dowler	31	477	15.4	45	4
T. Williams	27	275	10.2	60	3
Fleming	18	226	12.6	23	2
Hampton	15	216	14.4	50	2
Grabowski	12	98	8.2	25	1
Anderson	14	308	22.0	51	1
Pitts	9	47	5.2	21	1
Spillis	7	89	12.7	16	0
P. Williams	4	63	15.6	24	0

#### SCORING

	Tdr.	Tdp.	FG	Pat.	Pts.
T. Williams	6	3	0	0	54
Hampton	5	2	0	0	42
Mercer	0	0	5	23	38
Dale	0	6	0	0	36
Dowler	0	4	0	0	24
Lusteg	0	0	1	12	15
Anderson	1	1	0	0	12
Grabowski	1	1	0	0	12
Fleming	0	2	0	0	12
Pitts	0	1	0	0	6
Adderley	1	0	0	0	6
Horn	1	0	0	0	6
Hart	1	0	0	0	6

Little car for a great big country: Pinto's here.

## INTERCEPTIONS

	No.	Yds.	Ave.	Long.	TD
Adderley .....	5	*169	33.8	80	1
Hart .....	3	156	52.0	*85	1
Wood .....	3	40	13.3	21	0
Jeter .....	3	30	10.0	30	0
Nitschke .....	2	32	16.0	20	0
Caffey .....	2	1	0.5	1	0
Davis .....	1	0	0.0	0	0

## FIELD GOALS

	No.	Atts.	Blk.	Long.
Mercer .....	5	17	6	48
Distances: 32, 15, 14, 48, 27				
Lusteg .....	1	4	1	28
Distance: 28				

## PASSING

	Att.	Comp.	Yds.	Pct.	Tdk/Yds.	TD	Long.	Int.	Ave. Gain
Starr .....	148	92	1161	*62.2	24/217	9	51	* 6	7.84
Horn .....	168	89	1505	53.0	10/85	11	60	11	*8.96
Stevens .....	3	1	12	33.3	0/0	0	12	0	4.0

## KICKOFF RETURNS

	No.	Yds.	Long.	Ave.	Tds.
Hampton .....	22	582	87	26.5	*1
T. Williams .....	22	517	96	24.6	*1
Robinson .....	3	31	15	10.3	0
Pitts .....	1	22	22	22.0	0
Gillingham .....	1	13	13	13.0	0
P. Williams .....	1	0	0	0.0	0
Hyland .....	1	0	0	0.0	0

## PUNTING

	No.	Yds.	Ave.	Long.
Anderson .....	58	2329	40.2	58
Dowler .....	1	34	34.0	34

## PUNT RETURNS

	No.	FC	Yds.	Ave.	Long.	Tds.
Pitts .....	16	8	60	3.8	10	0
T. Williams .....	8	3	189	23.6	83	*1
Wood .....	8	6	38	4.8	13	0



## 1970 GREEN BAY PACKERS ROSTER

No.	Name	Pos.	Ht.	Wt.	Age	Yrs.	College
10	Patrick, Frank	QB	6-7	225	23	1	Nebraska
13	Horn, Don	QB	6-2	195	25	4	San Diego State
15	Starr, Bart	QB	6-1	190	36	15	Alabama
21	Jeter, Bob	DB	6-1	205	33	8	Iowa
23	Williams, Travis	RB	6-1	210	24	4	Arizona State
24	Wood, Willie	DB	5-10	190	33	11	USC
25	Hampton, Dave	RB	6-0	210	23	2	Wyoming
29	Matthews, Al	DB	5-11	190	23	1	Texas A & I
30	Krause, Larry	RB	6-0	208	22	1	St. Norbert
31	Williams, Perry	RB	6-2	219	23	2	Purdue
33	Grabowski, Jim	RB	6-2	220	25	5	Illinois
37	Livingston, Dale	K	6-0	210	25	3	W. Mich.
43	Hart, Doug	DB	6-0	190	31	7	Texas Arlington
44	Anderson, Donny	RB-P	6-3	210	27	5	Texas Tech
45	Hunt, Ervin	DB	6-2	190	23	1	Fresno State
48	Ellis, Ken	WR	5-10	190	23	1	Southern
52	Walker, Cleo	LB-C	6-3	219	22	1	Louisville
53	Carr, Fred	LB	6-5	238	24	3	Texas at El Paso
54	Walker, Malcolm	C-G	6-4	250	27	1	Rice
55	Flanigan, Jim	LB	6-3	240	25	4	Pittsburgh
57	Bowman, Ken	C	6-3	230	27	7	Wisconsin
62	Lueck, Bill	G	6-4	235	24	3	Arizona
66	Nitschke, Ray	LB	6-3	235	33	13	Illinois
68	Gillingham, Gale	G	6-3	255	26	5	Minnesota
70	Moore, Rich	DT	6-6	285	23	2	Villanova
71	Peay, Francis	T	6-5	250	26	5	Missouri
72	Himes, Dick	T	6-4	244	24	3	Ohio State
73	Hardy, Kevin	DT	6-5	260	25	2	Notre Dame
76	McCoy, Mike	DT	6-5	284	22	1	Notre Dame
77	Hayhoe, Bill	T	6-8	258	24	2	U.S.C.
78	Brown, Bob	DT	6-5	260	30	5	Arkansas AM & N
80	Clancy, Jack	WR	6-1	195	26	4	Michigan
81	McGeorge, Rich	TE	6-4	235	22	1	Elon
82	Aldridge, Lionel	DE	6-4	245	29	8	Utah State
83	Williams, Clarence	DE	6-5	255	23	1	Prairie View A & M
84	Dale, Carroll	WR	6-2	200	32	11	Virginia Tech
85	Splis, John	WR	6-3	205	23	2	N. Illinois
86	Hilton, John	TE	6-5	225	28	6	Richmond
89	Robinson, Dave	LB	6-3	240	29	8	Penn State

Head Coach: Phil Bengtson

Assistants: Zeke Bratkowski, Forrest Gregg, Dave Hanner, Dick Evans, Bob Schnelker, Ray Wietecha.

## 1970 PACKER DEPTH CHART

WR:  
LT:  
LG:  
C:  
RG:  
RT:  
TE:  
QB:  
RB:  
WR:SPILIS 85  
PEAY 71  
LUECK 62  
BOWMAN 57  
GILLINGHAM 68  
HIMES 72  
HILTON 86  
STARR 15  
GRABOWSKI 33  
ANDERSON 44  
DALE 84

## OFFENSE

CLANCY 49  
HAYHOE 77  
BRADLEY 61  
M. WALKER 54  
O'MALLEY 63  
HAYHOE 77  
McGEORGE 81  
HORN 13  
T. WILLIAMS 23  
HAMPTON 25  
CLANCY 49M. CARTER 36  
M. WALKER 54  
M. WALKER 54  
PATRICK 10  
P. WILLIAMS 31  
KRAUSE 30  
M. CARTER 36DE:  
DT:  
DT:  
DE:  
LLB:  
MLB:  
RLB:  
LCB:  
RCB:  
LS:  
RS:BROWN 78  
MOORE 70  
McCOY 76  
ALDRIDGE 82  
ROBINSON 89  
NITSCHKE 66  
CARR 53  
ELLIS 48  
JETER 21  
HART 43  
WOOD 24

## DEFENSE

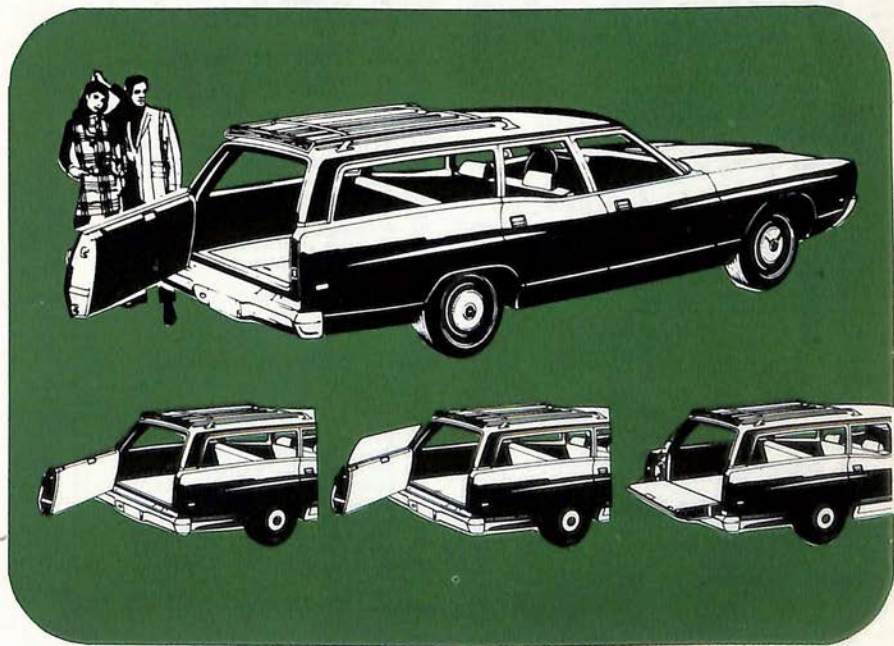
C. WILLIAMS 83  
McARTHUR 74  
McARTHUR 74  
C. WILLIAMS 83  
FLANIGAN 55  
FLANIGAN 55  
FLANIGAN 55  
MATTHEWS 29  
MATTHEWS 29  
HUNT 45  
HUNT 45HARDY 73  
J. CARTER 50  
HARDEN 28  
HARDEN 28PUNTERS:  
PLACE-  
MENTS:  
HOLDERS:  
PUNT  
RETURN:  
KICK-OFF  
RETURN:LIVINGSTON 37  
LIVINGSTON 37  
STARR 15  
WOOD 24  
T. WILLIAMS 23

## KICKING SPECIALISTS

ANDERSON 44  
WARREN 39  
ANDERSON 44  
T. WILLIAMS 23  
HAMPTON 25ELLIS 48  
ELLIS 48

**Endorsed by  
a million swingers...**

**Ford's 3-way  
Magic Doorgate**



Just one of many Better Ideas that have  
made Ford Wagons America's No. 1 sellers.

**See the Wagonmaster,  
your Ford Dealer**

# NATIONAL FOOTBALL LEAGUE 1970 REGULAR SEASON SCHEDULE

(All times Local, Daylight or Standard)

## FRIDAY, SEPTEMBER 18 (First Week)

1. St. Louis at Los Angeles ..... 8:00

## SATURDAY, SEPTEMBER 19

2. Chicago at New York Giants ..... 8:00

## SUNDAY, SEPTEMBER 20

3. Atlanta at New Orleans ..... 1:00  
4. Baltimore at San Diego ..... 1:00  
5. Dallas at Philadelphia ..... 1:00  
6. Denver at Buffalo ..... 1:00  
7. Detroit at Green Bay ..... 1:00  
8. Houston at Pittsburgh ..... 1:00  
9. Kansas City at Minnesota ..... 3:00  
10. Miami at Boston ..... 1:00  
11. Oakland at Cincinnati ..... 1:00  
12. Washington at San Francisco ..... 1:00

## MONDAY, SEPTEMBER 21

13. New York Jets at Cleveland ..... 9:00

## SUNDAY, SEPTEMBER 27 (Second Week)

14. Atlanta at Green Bay ..... 1:00  
15. Cincinnati at Detroit ..... 1:00  
16. Cleveland at San Francisco ..... 1:00  
17. Los Angeles at Buffalo ..... 1:00  
18. Miami at Houston ..... 1:00  
19. New Orleans at Minnesota ..... 1:00  
20. New York Giants at Dallas ..... 1:00  
21. New York Jets at Boston ..... 1:00  
22. Oakland at San Diego ..... 1:00  
23. Philadelphia at Chicago ..... 1:00  
24. Pittsburgh at Denver ..... 2:00  
25. Washington at St. Louis ..... 1:00

## MONDAY, SEPTEMBER 28

26. Kansas City at Baltimore ..... 9:00

## SATURDAY, OCTOBER 3 (Third Week)

27. Oakland at Miami ..... 8:00  
28. Pittsburgh at Cleveland ..... 9:00

## SUNDAY, OCTOBER 4

29. Boston at Baltimore ..... 2:00  
30. Dallas at St. Louis ..... 1:00  
31. Houston at Cincinnati ..... 1:00  
32. Kansas City at Denver ..... 2:00  
33. Minnesota vs. Green Bay at Milw. .... 3:00  
34. New York Giants at New Orleans ..... 1:00  
35. New York Jets at Buffalo ..... 1:00  
36. San Diego at Los Angeles ..... 1:00  
37. San Francisco at Atlanta ..... 1:00  
38. Washington at Philadelphia ..... 1:00

## MONDAY, OCTOBER 5

39. Chicago at Detroit ..... (EST) 8:00

## SATURDAY, OCTOBER 10 (Fourth Week)

40. Miami at New York Jets ..... 8:00

## SUNDAY, OCTOBER 11

41. Atlanta at Dallas ..... 1:00

42. Baltimore at Houston ..... 1:00  
43. Boston at Kansas City ..... 1:00  
44. Buffalo at Pittsburgh ..... 1:00  
45. Cincinnati at Cleveland ..... 1:00  
46. Denver at Oakland ..... 1:00  
47. Detroit at Washington ..... 1:00  
48. Minnesota at Chicago ..... 1:00  
49. New Orleans at St. Louis ..... 1:00  
50. Philadelphia at New York Giants ..... 1:00  
51. San Francisco at Los Angeles ..... 1:00

## MONDAY, OCTOBER 12

52. Green Bay at San Diego ..... 6:00

## SUNDAY, OCTOBER 18 (Fifth Week)

53. Atlanta at Denver ..... 2:00  
54. Baltimore at New York Jets ..... 1:00  
55. Dallas at Minnesota ..... 3:00  
56. Detroit at Cleveland ..... 1:00  
57. Kansas City at Cincinnati ..... 4:00  
58. Los Angeles at Green Bay ..... 1:00  
59. Miami at Buffalo ..... 1:00  
60. New Orleans at San Francisco ..... 1:00  
61. New York Giants at Boston ..... 1:00  
62. Pittsburgh at Houston ..... 1:00  
63. St. Louis at Philadelphia ..... 1:00  
64. San Diego at Chicago ..... 1:00

## MONDAY, OCTOBER 19

65. Washington at Oakland ..... 6:00

## SUNDAY, OCTOBER 25 (Sixth Week)

66. Baltimore at Boston ..... 1:00  
67. Buffalo at New York Jets ..... 1:00  
68. Cincinnati at Washington ..... 1:00  
69. Cleveland at Miami ..... 1:00  
70. Dallas at Kansas City ..... 3:00  
71. Denver at San Francisco ..... 1:00  
72. Detroit at Chicago ..... 1:00  
73. Houston at San Diego ..... 1:00  
74. New Orleans at Atlanta ..... 1:00  
75. Philadelphia vs. Green Bay at Milw. .... 1:00  
76. Pittsburgh at Oakland ..... 1:00  
77. St. Louis at New York Giants ..... 1:00

## MONDAY, OCTOBER 26

78. Los Angeles at Minnesota ..... 8:00

## SUNDAY, NOVEMBER 1 (Seventh Week)

79. Buffalo at Boston ..... 1:00  
80. Chicago at Atlanta ..... 1:00  
81. Green Bay at San Francisco ..... 1:00  
82. Houston at St. Louis ..... 1:00  
83. Los Angeles at New Orleans ..... 1:00  
84. Miami at Baltimore ..... 2:00  
85. Minnesota at Detroit ..... 1:00  
86. New York Giants at New York Jets ..... 1:00  
87. Oakland at Kansas City ..... 3:00  
88. Philadelphia at Dallas ..... 1:00  
89. San Diego at Cleveland ..... 1:00  
90. Washington at Denver ..... 2:00

## MONDAY, NOVEMBER 2

91. Cincinnati at Pittsburgh ..... 9:00

**SUNDAY, NOVEMBER 8 (Eighth Week)**

92. Atlanta at Los Angeles	1:00
93. Boston at St. Louis	1:00
94. Cincinnati at Buffalo	1:00
95. Cleveland at Oakland	1:00
96. Dallas at New York Giants	1:00
97. Denver at San Diego	1:00
98. Detroit at New Orleans	1:00
99. Houston at Kansas City	1:00
100. Miami at Philadelphia	1:00
101. Minnesota at Washington	1:00
102. New York Jets at Pittsburgh	1:00
103. San Francisco at Chicago	1:00

**MONDAY, NOVEMBER 9**

104. Baltimore vs. Green Bay at Milw.	8:00
---------------------------------------	------

**SUNDAY, NOVEMBER 15 (Ninth Week)**

105. Atlanta at Philadelphia	1:00
106. Buffalo at Baltimore	2:00
107. Chicago at Green Bay	1:00
108. Cleveland at Cincinnati	1:00
109. Detroit at Minnesota	1:00
110. Kansas City at Pittsburgh	1:00
111. New Orleans at Miami	1:00
112. New York Jets at Los Angeles	1:00
113. Oakland at Denver	2:00
114. San Diego at Boston	1:00
115. San Francisco at Houston	1:00
116. Washington at New York Giants	1:00

**MONDAY, NOVEMBER 16**

117. St. Louis at Dallas	8:00
--------------------------	------

**SUNDAY, NOVEMBER 22 (Tenth Week)**

118. Baltimore at Miami	1:00
119. Boston at New York Jets	1:00
120. Buffalo at Chicago	1:00
121. Dallas at Washington	1:00
122. Denver at New Orleans	1:00
123. Green Bay at Minnesota	1:00
124. Houston at Cleveland	1:00
125. Los Angeles at Atlanta	1:00
126. Pittsburgh at Cincinnati	1:00
127. St. Louis at Kansas City	3:00
128. San Diego at Oakland	1:00
129. San Francisco at Detroit	1:00

**MONDAY, NOVEMBER 23**

130. New York Giants at Philadelphia	9:00
--------------------------------------	------

**THURSDAY, NOVEMBER 26 (Eleventh Week)**

(Thanksgiving)	
131. Oakland at Detroit	12:00
132. Green Bay at Dallas	2:30

**SUNDAY, NOVEMBER 29**

133. Boston at Buffalo	1:00
134. Chicago at Baltimore	2:00
135. Cleveland at Pittsburgh	1:00
136. Denver at Houston	1:00
137. Los Angeles at San Francisco	1:00
138. Minnesota at New York Jets	1:00
139. New Orleans at Cincinnati	4:00
140. New York Giants at Washington	1:00
141. Philadelphia at St. Louis	1:00
142. San Diego at Kansas City	1:00

**MONDAY, NOVEMBER 30**

143. Miami at Atlanta	9:00
-----------------------	------

**SATURDAY, DECEMBER 5 (Twelfth Week)**

144. Chicago at Minnesota	12:00
---------------------------	-------

**SUNDAY, DECEMBER 6**

145. Atlanta at San Francisco	1:00
146. Boston at Miami	1:00
147. Buffalo at New York Giants	1:00
148. Cincinnati at San Diego	1:00
149. Denver at Kansas City	1:00
150. Green Bay at Pittsburgh	1:00
151. New Orleans at Los Angeles	1:00
152. Oakland at New York Jets	1:00
153. Philadelphia at Baltimore	2:00
154. St. Louis at Detroit	1:00
155. Washington at Dallas	3:00

**MONDAY, DECEMBER 7**

156. Cleveland at Houston	8:00
---------------------------	------

**SATURDAY, DECEMBER 12 (Thirteenth Week)**

157. Dallas at Cleveland	1:00
158. Kansas City at Oakland	1:00

**SUNDAY, DECEMBER 13**

159. Baltimore at Buffalo	1:00
160. Cincinnati at Houston	1:00
161. Green Bay at Chicago	1:00
162. Minnesota at Boston	1:00
163. New York Giants at St. Louis	1:00
164. New York Jets at Miami	4:00
165. Philadelphia at Washington	1:00
166. Pittsburgh at Atlanta	1:00
167. San Diego at Denver	2:00
168. San Francisco at New Orleans	1:00

**MONDAY, DECEMBER 14**

169. Detroit at Los Angeles	6:00
-----------------------------	------

**SATURDAY, DECEMBER 19 (Fourteenth Week)**

170. New York Jets at Baltimore	3:00
---------------------------------	------

**SUNDAY, DECEMBER 20**

171. Boston at Cincinnati	1:00
172. Buffalo at Miami	1:00
173. Chicago at New Orleans	1:00
174. Cleveland at Denver	2:00
175. Green Bay at Detroit	1:00
176. Houston at Dallas	1:00
177. Kansas City at San Diego	1:00
178. Los Angeles at New York Giants	1:00
179. Minnesota at Atlanta	1:00
180. Pittsburgh at Philadelphia	1:00
181. St. Louis at Washington	1:00
182. San Francisco at Oakland	1:00

**NFL POST-SEASON CHAMPIONSHIP GAMES****Saturday, December 26 —**

- American Conference Division Playoff
- National Conference Divisional Playoff

**Sunday, December 27 —**

- American Conference Divisional Playoff
- National Conference Divisional Playoff

**Sunday, January 3 —**

- American Conference Championship Game
- National Conference Championship Game

**Sunday, January 17 —**

- Super Bowl Championship Game at Miami, Fla.

# GREEN BAY PACKERS WESTERN DIVISION PLAYOFF RECORD

## GAMES

Dec. 14, 1941 . . . . . Packers 14	Bears . . . . . 33 . . . . . at Chicago	<b>ATTEND.</b>
Dec. 26, 1965 . . . . . Packers 13	Colts . . . . . 10 . . . . . at Green Bay	(43,425)
Dec. 23, 1967 . . . . . Packers 28	Rams . . . . . 7 . . . . . at Milw.	(50,861)
		(48,861)

## RUSHING

<b>Most (Net) Yards Gained</b> 362, vs. Colts, 1965	<b>Most Yards — Individual</b> 88, T. Williams vs. Rams, 1967
<b>Fewest (Net) Yards Gained</b> 217, vs. Rams, 1967	60, J. Taylor vs. Colts, 1965
<b>Most (Net) Yards Allowed</b> 255, vs. Bears, 1941	<b>Most Attempts — Individual</b> 23, J. Taylor vs. Colts, 1965
<b>Fewest (Net) Yards Allowed</b> 175, vs. Colts, 1965	18, T. Williams vs. Rams, 1967
<b>Most Yards — Team</b> 163, vs. Rams, 1967	<b>TDs Rushing — 1 Game</b> 2, T. Williams vs. Rams, 1967
<b>Most Attempts — Team</b> 45, vs. Rams, 1967	<b>Fewest Yds. Allowed Rushing</b> 143, vs. Colts, 1965
	<b>Fewest TDs Allowed Rushing</b> 0, vs. Rams, 1967

## PASSING

<b>Most Yards — Team</b> 250, vs. Colts, 1965	<b>Most TDs —</b> 1, C. Isbell vs. Bears, 1941
<b>Most Attempts — 1 Game</b> 39, vs. Colts, 1965	1, B. Starr vs. Rams, 1967
<b>Most Completions — 1 Game</b> 22, Z. Bratkowski vs. Colts, 1965	<b>Most Interceptions — Total</b> 2, Z. Bratkowski
17, B. Starr vs. Rams, 1967	<b>Most Interceptions — 1 Game</b> 2, Z. Bratkowski vs. Colts, 1965
<b>Most Yards — Individual</b> 248, Z. Bratkowski vs. Colts, 1965	<b>Longest</b> 48 yds., Starr to Dale vs. Rams, 1967

## SCORING

<b>Most Points — Total</b> 12, T. Williams (2 TDs running)	<b>Most Points — 1 Game</b> 12, T. Williams vs. Rams, 1967
11, D. Chandler (2 FGs, 5 XTRA PTS)	

Ford's new Pinto . . . put a little kick in your life!

**RECEIVING****Most Passes Caught — Total**

- 9, C. Dale (2 games)
- 8, B. Anderson (1 game)
- 8, B. Dowler (2 games)

**Most Passes Caught — 1 Game**

- 8, B. Anderson vs. Colts, 1965
- 6, C. Dale vs. Rams, 1967
- 5, B. Dowler vs. Colts, 1965

**Most Yardage — 1 Game**

- 109 yds., C. Dale vs. Rams, 1967
- 78 yds., B. Anderson vs. Colts, 1965

**Most TDs — Total**

- 1, held by 3 players

**Most TDs — 1 Game**

- 1, held by 3 players

**Longest**

- 48 yds., C. Dale from Starr vs. Rams, 1967

**PUNTING****Most Punts — 1 Game**

- 5, D. Chandler vs. Colts, 1965
- 5, D. Anderson vs. Rams, 1967

**Longest Average — 1 Game**

- 42.6, D. Chandler vs. Colts

**PUNT RETURNS****Most Punts Returned — 1 Game**

- 3, E. Pitts vs. Colts, 1965
- 3, W. Wood vs. Colts, 1965

**Most Yardage — 1 Game**

- 39, T. Brown vs. Rams, 1967

**Longest**

- 39, T. Brown vs. Rams, 1967

**KICKOFF RETURNS****Most Returns — 1 Game**

- 2, held by 3 men

**Most Yardage — 1 Game**

- 41, T. Moore vs. Colts, 1965

**Longest**

- 25, E. Jankowski vs. Bears, 1941

**INTERCEPTIONS****Most — 1 Game**

- 1, T. Brown vs. Rams, 1967

**Yardage on Interceptions — 1 Game**

- 20, T. Brown vs. Rams, 1967

**Longest**

- 20, T. Brown vs. Rams, 1967

**FIELD GOALS****Most — 1 Game**

- 2, D. Chandler vs. Colts, 1965

**Attempts — 1 Game**

- 3, D. Chandler vs. Colts, 1965

**Longest**

- 25, D. Chandler vs. Colts, 1965

## GREEN BAY PACKERS

### NFL CHAMPIONSHIP GAME RECORDS (Does Not Include AFL-NFL Title Game)

#### CHAMPIONSHIPS WON

\*11, Green Bay (1929, 30, 31, 36, 39, 44, 61, 62, 65, 66 & 67)

#### Rushing:

Most Attempts — lifetime

\*106, Jim Taylor, 5 games

Most Attempts — game

31, Jim Taylor vs. Browns, 1965

Most Yards — lifetime

\*392, Jim Taylor, 5 games

Most Yards — game

105, Jim Taylor, 1960

105, Paul Hornung, 1965

#### Passing:

Most Attempts — lifetime

147, Bart Starr, 6 games

Most Attempts — game

35, Bart Starr, 1960 vs. Eagles

Most Completions — lifetime

84, Bart Starr, 6 games

Most Completions — game

25, Bart Starr, 1960

Most Yardage — lifetime

990 yards, Bart Starr, 6 games

Most Yardage — game

304, Bart Starr vs. Dallas, 1966

Most Touchdowns — lifetime

11 Bart Starr, 6 games

Most Touchdowns — game

4, Bart Starr vs. Dallas, 1966

\*—League record.

**Fewest**

Total Yards Allowed — 1 game  
116, Green Bay vs. Boston, 1936

Yards Allowed Rushing — 1 game  
31, Green Bay vs. New York, 1961  
39, Green Bay vs. Boston, 1936

First Downs Allowed — 1 game  
6, Green Bay vs. New York, 1961

**Punt Returns**

Most — 1 game  
\*8, Green Bay vs. New York, 1944

Most Yardage — 1 game  
89, Green Bay vs. New York, 1944

**Scoring**

Most Points — 1 game  
\*19, Paul Hornung, G. B. vs. N. Y., 1961 (1 td, 4 xp, 3 fgs.)

**Interceptions**

Most Passes Intercepted — 1 game  
6, Green Bay vs. New York, 1939

Most Yardage Interceptions Returned — 1 game  
\*123, Green Bay vs. New York, 1939 (6 interceptions)

**Field Goals**

Most Field Goals — team  
\*14, Green Bay (11 games, 19 attempts)

Most Attempted — 1 game  
\*5, Green Bay vs. New York, 1962

Most Field Goals — 1 game  
\*3, Jerry Kramer, 1962 vs. New York (5 attempts)  
\*3, Don Chandler, 1965 vs. Cleveland (3 attempts)

\*—League record.

# GREEN BAY PACKERS

## AFL-NFL CHAMPIONSHIP GAME RECORDS

\*Record

### Most Games Won

- \*2, Green Bay,  
1967 vs. Kansas City, 35-10  
1968 vs. Oakland, 33-14

### Most Points Scored

- \*35, vs. Kansas City, 1967

### Fewest Points Allowed

- 10, vs. Kansas City, 1967

### Most (Net) Yards Gained

- \*358, vs. Kansas City, 1967

### Fewest (Net) Yards Allowed

- \*239, vs. Kansas City, 1967 —  
\*(Tie) 239, vs. Kansas City, 1967.

### Rushing

#### Most Yards — Team

- 130, vs. Kansas City, 1967

#### Individual Attempts

- 17, Ben Wilson, 1968 vs. Oakland  
16, Jim Taylor, 1967 vs. Kansas City

#### Yardage — Individual

- 65, Ben Wilson, 1968 vs. Oakland  
53, Jim Taylor, 1967 vs. Kansas City

#### Touchdowns Rushing

- \*2, Elijah Pitts, 1967 vs. Kansas City

#### Fewest Yards Allowed Rushing

- 72, Kansas City, 1967

#### Fewest TDs Allowed Rushing

- \*0, Kansas City, 1967  
\*0, Oakland, 1968

### Passing

#### Most Yards — Team

- \*250, vs. Kansas City, 1967

#### Most Attempts — 1 Game

- 24, Bart Starr, vs. Oakland, 1968  
23, Bart Starr, vs. Kansas City, 1967

#### Most Completions — 1 Game

- 16, Bart Starr, vs. Kansas City, 1967

#### Most Yardage — Individual

- \*250, Bart Starr, vs. Kansas City, 1967

#### Most Touchdowns — 1 Game

- \*2, Bart Starr, 1967 vs. Kansas City

#### Interceptions — 1 Game

- 1, Bart Starr, 1967 vs. Kansas City  
(23 attempts)

### Scoring

#### Most Points — 1 Game

- \*15, Don Chandler, 1968 vs. Oakland  
(4 Fg, 3 Pats)  
12, Max McGee, 1967 vs. Kansas City  
(2 TDs)  
12, Elijah Pitts, 1967 vs. Kansas City  
(2 TDs)

### Receiving

#### Most Passes Caught — 1 Game

- 7, Max McGee, 1967 vs. Kansas City

#### Most Yardage — 1 Game

- \*138, Max McGee, 1967 vs. Kansas City  
(7 receptions)  
71, Boyd Dowler, 1968 vs. Oakland  
(2 receptions)

#### Most TD Passes — 1 Game

- 2, Max McGee, 1967 vs. Kansas City

### Punting

#### Most Punts

- \*6, Donny Anderson, 1968 vs. Oakland  
3, Don Chandler, 1967 vs. Kansas City

#### Highest Average

- 43.3, Don Chandler, 1967 vs. Kansas City

### Punt Returns

#### Most Punts Returned

- 3, Donny Anderson, 1967 vs. Kansas City  
3, Willie Wood, 1968 vs. Oakland

#### Most Yardage on Punt Returns

- \*35, Willie Wood, 1968 vs. Oakland  
25, Donny Anderson, 1967 vs. Kansas City

#### Longest Punt Return

- \*31, Willie Wood, 1968 vs. Oakland  
15, Donny Anderson, 1967 vs. Kansas City

### Kickoff Returns

#### Most Kickoffs Returned

- 2, Herb Adderley, 1967 vs. Kansas City

#### Most Yardage on Kickoff Returns

- 40, Herb Adderley, 1967 vs. Kansas City

#### Longest Kickoff Return

- 25, Donny Anderson, 1967 vs. Kansas City

### Interceptions

#### Most

- 1, Willie Wood, 1967 vs. Kansas City  
1, Herb Adderley, 1968 vs. Oakland

#### Yards on Interception

- \*60, Herb Adderley, 1968 vs. Oakland  
60, Willie Wood, 1967 vs. Kansas City

# America's biggest little-car line-up for 1971



## 1 Pinto

Ford's all new Pinto. Sized and priced with the imports. But it gives you the room inside and the power American drivers want.



## 3 Mavericks

First is the simple machine, unchanged. Second there's a new sporty version. Third is the new 4-door Maverick. Come on in.

# See your Ford Dealer

# GREEN BAY PACKERS INDIVIDUAL RECORDS

## BALL CARRYING

### Most Attempts —

- 1,811, Jim Taylor, 1958-1966 (9 seasons). Gained 8,207 yards, averaged 4.53.
- 1,171, Clarke Hinkle, 1932-41 (10 seasons). Gained 3,860 yards, averaged 3.29.
- 1,025, Tony Canadeo, 1941-44, 1946-52 (11 seasons). Gained 4,197 yards, averaged 4.1.

### Most Attempts (one season) —

- 272, Jim Taylor, 1962 (14 games), for 1,474 yards, average 5.4 yards.
- 248, Jim Taylor, 1963 (14 games), for 1,018 yards, average 4.1 yards.
- 243, Jim Taylor, 1961 (14 games), for 1,307 yards, average 4.8 yards.
- 235, Jim Taylor, 1964 (14 games), for 1,169 yards, average 5.0 yards.
- 230, Jim Taylor, 1960 (12 games), for 1,101 yards, average 4.8 yards.
- 208, Tony Canadeo, 1949 (12 games), for 1,052 yards, average 5.1 yards.

### Most Attempts (one game) —

- 32, Jim Grabowski, 1967 vs. Chicago — 111 yds.
- 30, Jim Taylor, 1963 vs. Pittsburgh — 141 yds.
- 28, Paul Hornung, 1959 vs. San Francisco — 138 yards.

### Total Yards Gained —

- 8,207, Jim Taylor, 1958-66 (9 seasons) in 1,811 attempts.
- 4,197, Tony Canadeo, 1941-44, 1946-52 (11 seasons, 115 games) in 1,025 attempts, average 4.07 yards.
- 3,877, Clarke Hinkle, 1932-41 (10 seasons, 113 games), in 1,180 attempts, average 3.28 yards.
- 3,712, Paul Hornung, 1957-62, 1964-66 (9 seasons), in 1,017 attempts, average 3.65 yards.

### Most Yards Gained (one season) —

- 1,474, Jim Taylor, 1962 (272 attempts).
- 1,307, Jim Taylor, 1961 (243 attempts).
- 1,169, Jim Taylor, 1964 (235 attempts).
- 1,101, Jim Taylor, 1960 (230 attempts).
- 1,052, Tony Canadeo, 1949 (208 attempts).
- 1,018, Jim Taylor, 1963 (248 attempts).

### Most Yards Gained (one game) —

- 186, Jim Taylor, Green Bay vs. New York Giants, 1961 (27 attempts).
- 167, Billy Grimes, Green Bay vs. New York Yanks, 1950 (10 attempts).
- 165, Jim Taylor, Green Bay vs. Rams, 1964 (17 attempts).
- 164, Jim Taylor, Green Bay vs. Minnesota, 1962 (17 attempts).

### Longest Run From Scrimmage —

- †97 yards, Andy Uram, Green Bay vs. Chicago Cardinals, October 8, 1939 (touchdown).
- 84 yards, Jim Taylor, Green Bay vs. Lions, November 8, 1964 (touchdown).
- 77 yards, Tom Moore, Green Bay vs. Lions, 1963 (touchdown).
- 73 yards, Billy Grimes, Green Bay vs. Chicago Bears, October 15, 1950 (touchdown).

### Longest Return of Kickoff —

- °106, Al Carmichael, Green Bay vs. Chicago Bears, October 7, 1956 (touchdown).
- 104, Travis Williams, Green Bay vs. Los Angeles Rams, December 9, 1967 (touchdown).
- 103, Herb Adderley, Green Bay vs. Baltimore Colts, November 18, 1962 (touchdown).

### Longest Punt Return —

- 93 yards, Veryl Switzer, Green Bay vs. Chicago Bears, November 7, 1954 (touchdown).
- 90 yards, Andy Uram, Green Bay vs. Brooklyn, October 12, 1941 (touchdown).

### Longest Return With Intercepted Forward Pass —

- 94 yards, Rebel Steiner, Green Bay vs. Chicago Bears, October 1, 1950 (touchdown).
- 91 yards, Hal Van Every vs. Pittsburgh Steelers, 1941 (touchdown).
- 88 yards, Bob Summerhays, Green Bay vs. Philadelphia, October 14, 1951 (touchdown).

†—League record. Tied by Bobby Gage, Pittsburgh Steelers in 1949.

°—High in NFL.

## FORWARD PASSING

### Most Passes Completed —

- 1,644, Bart Starr, 1956-69 (14 seasons).
- 826, Tobin Rote, 1959-56 (7 seasons).
- 419, Cecil Isbell, 1938-42 (5 seasons).
- 410, Arnie Herber, 1932-40 (9 seasons).

### Most Passes Completed (one season) —

- 180, Tobin Rote, Green Bay, 1954 (attempted 382).
- 178, Bart Starr, 1962 (attempted 285).

### Most Passes Completed (one game) —

- 26, Bart Starr, Green Bay vs. Baltimore, October 12, 1958 (46 attempts).
- 24, Bobby Thomason, Green Bay vs. Detroit, November 4, 1951 (33 attempts).

### Most Passes Attempted —

- 2,849, Bart Starr, 1956-69, (14 seasons).
- 1,854, Tobin Rote, 1950-56 (completed 826).

### Most Passes Attempted (one season) —

- \*382, Tobin Rote, 1954.
- 342, Tobin Rote, 1955.
- 308, Tobin Rote, 1956.
- 295, Bart Starr, 1961.
- 285, Bart Starr, 1962.

### Most Passes Attempted (one game) —

- 46, Bart Starr, Green Bay vs. Baltimore, October 12, 1958, (completed 26).
- 42, Tobin Rote, Green Bay vs. Chicago Bears, November 7, 1954 (completed 17).

### Fewest Passes Had Intercepted (one season) —

- 3, Bart Starr, 1966, (251 attempts).

### Most Passes Had Intercepted (one season) —

- 24, Tobin Rote, 1950 (224 attempts).
- 21, Irv Comp, 1944 (177 attempts).
- 21, Jack Jacobs, 1948 (184 attempts).

### Most Passes Had Intercepted (one game) —

- 6, Tom O'Malley, Green Bay vs. Detroit, September 17, 1950 (15 attempts).
- 5, Cecil Isbell, Green Bay vs. New York Giants, November 20, 1938 (19 attempts).
- 5, Jack Jacobs, Green Bay vs. New York Giants, November 23, 1947 (24 attempts).
- 5, Tobin Rote, Green Bay vs. Los Angeles Rams, 1955 (40 attempts).
- 5, Bart Starr, Green Bay vs. Chicago, September 24, 1967.

### Most Consecutive Passes Thrown Without Interception —

- \*294, Bart Starr, 1964-65

### Most Yards Gained on Passes —

- 22,787, Bart Starr, 1956-69 (14 seasons).
- 11,535, Tobin Rote, 1950-56 (7 seasons).
- 6,741, Arnold Herber, 1932-40 (9 seasons).

### Most Yards Gained on Passes (one season) —

- 2,438, Bart Starr, 1962 (14 games).
- 2,418, Bart Starr, 1961 (14 games).
- 2,311, Tobin Rote, 1954 (12 games).

### Most Yards Gained on Passes (one game) —

- 410, Don Horn, Green Bay vs. Cardinals, 1969 (22 completions).
- 335, Tobin Rote, Green Bay vs. Los Angeles Rams, 1951 (20 completions).
- 333, Cecil Isbell, Green Bay vs. Chicago Cardinals, 1942 (10 completions).
- 321, Bart Starr, Green Bay vs. Minnesota Vikings, 1961 (19 completions).
- 320, Bart Starr, Green Bay vs. Baltimore Colts, 1958 (26 completions).

### Longest Completed Pass —

- 96 yards, Tobin Rote to Billy Grimes, 1950.
- 92 yards, Cecil Isbell to Don Hutson, 1939.
- 91 yards, Bart Starr to Boyd Dowler, 1960.

### Shortest Completed Pass (for touchdown) —

- 4 inches, Cecil Isbell to Don Hutson, Green Bay vs. Cleveland Rams, October 18, 1942 (touchdown).

\*—League record.

# GREEN BAY PACKERS

## INDIVIDUAL RECORDS (continued)

### FORWARD PASSING (continued)

#### Most Touchdown Passes —

- 144, Bart Starr, 1956-69 (14 seasons).
- 89, Tobin Rote, 1950-56 (7 seasons).
- 59, Cecil Isbell, 1938-42 (5 seasons).
- 51, Arnie Herber, 1932-40 (9 seasons).

#### Most Touchdown Passes (one season) —

- 24, Cecil Isbell, 1942.
- 18, Tobin Rote, 1956.
- 17, Tobin Rote, 1955.
- 16, Cecil Isbell, 1941.
- 16, Jack Jacobs, 1947.
- 16, Bart Starr, 1961.
- 16, Bart Starr, 1965.

#### Most Touchdown Passes (one game) —

- 5, Cecil Isbell, Green Bay vs. Cleveland Rams, November 1, 1942.
- 5, Don Horn, Green Bay vs. Cardinals, December 21, 1969.
- 4, Bart Starr, Green Bay vs. Dallas Cowboys, October 28, 1968.
- 4, Bart Starr, Green Bay vs. Vikings, 1964.
- 4, Lamar McHan, Green Bay vs. Lions, 1959.
- 4, Roy McKay, Green Bay vs. Lions, 1945.

#### Most Consecutive Games Throwing Touchdown Passes —

- 23, Cecil Isbell (12 in 1941, 11 in 1942).

#### Best Passing Efficiency (500 or more attempts) —

- 57.5%, Bart Starr, 1956-69 (14 seasons).
- 50.06%, Cecil Isbell, 1938-42 (5 seasons).
- 50.06%, Arnie Herber, 1932-40 (9 seasons).

## PASS RECEIVING

#### Most Passes Caught —

- 489, Don Hutson, 1935-45 (11 seasons, 118 games).
- 449, Boyd Dowler, 1959-69 (11 seasons).
- 345, Max McGee, 1954, 1957-67 (12 seasons).
- 303, Bill Howton, 1952-58 (7 seasons, 80 games).

#### Most Passes Caught (one season) —

- 74, Don Hutson, 1942.
- 58, Don Hutson, 1941, 1944.
- 55, Bill Howton, 1956.
- 54, Boyd Dowler, 1967.
- 53, Bill Howton, 1952.
- 53, Boyd Dowler, 1963.
- 52, Bill Howton, 1954.
- 51, Max McGee, 1961.

#### Most Passes Caught (one game) —

- 14, Don Hutson, vs. New York Giants, 1942 (134 yards).
- 13, Don Hutson, vs. Cleveland Rams, 1942 (209 yards).
- 11, Bob Mann, vs. Los Angeles Rams, 1951, (123 yards).
- 11, Bill Howton, vs. Baltimore, 1954 (147 yards).
- 10, Max McGee, vs. Minnesota, 1962 (159 yards).
- 9, Max McGee, vs. Los Angeles Rams, 1954 (105 yards).
- 9, Carroll Dale, vs. Cardinals, 1969 (195 yards).

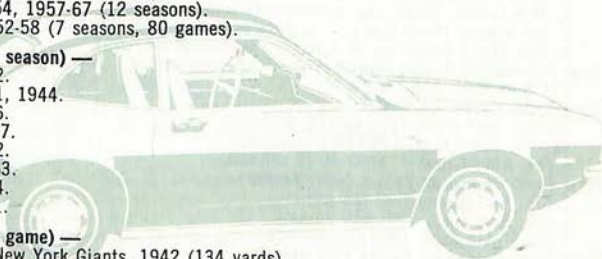
#### Most Touchdown Passes Received —

- \*101, Don Hutson, 1935-45 (11 seasons).
- 50, Max McGee, 1954, 1957-67 (12 seasons).
- 43, Bill Howton, 1952-58 (7 seasons).

#### Most Touchdown Passes Received (one season) —

- \*17, Don Hutson, 1942 (11 games).
- 13, Bill Howton, 1952 (12 games).
- 12, Bill Howton, 1956 (12 games).
- 11, Don Hutson, 1943 (12 games).
- 10, Don Hutson, 1941 (12 games).
- 9, Max McGee, 1954 (12 games).

\*—League record.



**PASS RECEIVING (continued)****Most Touchdown Passes Received (one game) —**

- 4, Don Hutson, Green Bay vs. Detroit, October 7, 1945.
- 3, Don Hutson (7 times).
- 3, Andy Uram, Green Bay vs. Chicago Cardinals, 1942.
- 3, Bob Mann, Green Bay vs. Philadelphia Eagles, 1951.
- 3, Bill Howton, Green Bay vs. Detroit, November 27, 1952.
- 3, Max McGee, Green Bay vs. Philadelphia, October 30, 1954.
- 3, Max McGee, Green Bay vs. Los Angeles Rams, December 7, 1963.

**Most Yards Catching Passes —**

- \*8,010, Don Hutson, 1935-1945 (11 seasons).
- 6,417, Boyd Dowler, 1959-68 (10 seasons).
- 6,279, Max McGee, 1954, 1957-67 (12 seasons).
- 5,581, Bill Howton, 1952-58 (7 seasons).

**Most Yards Gained Catching Passes (one season) —**

- 1,231, Bill Howton, 1952.
- 1,211, Don Hutson, 1942.
- 1,188, Bill Howton, 1956.
- 901, Boyd Dowler, 1963.
- 883, Max McGee, 1961.

**Most Yards Gained Catching Passes (one game) —**

- 257, Bill Howton, Green Bay vs. Los Angeles Rams, October 21, 1956 (7 passes).
- 237, Don Hutson, Green Bay vs. Brooklyn, November 21, 1943 (8 passes).
- 209, Don Hutson, Green Bay vs. Cleveland Rams, November 11, 1942.
- 205, Carroll Dale, Green Bay vs. Detroit Lions, September 29, 1968 (6 passes).
- 200, Bill Howton, Green Bay vs. Los Angeles Rams, December 7, 1962 (6 passes).

**Longest Completed Pass —**

- 96 yards, Tobin Rote to Billy Grimes, 1950.
- 92 yards, Cecil Isbell to Don Hutson, 1939.
- 91 yards, Bart Starr to Boyd Dowler, 1960.

**Shortest Completed Pass (for touchdown) —**

- 4 inches, Don Hutson from Cecil Isbell, Green Bay vs. Cleveland Rams, October 18, 1942 (touchdown).

**SCORING****Total Points —**

- \*823, Don Hutson, 1935-45 ((11 seasons). (105 touchdowns, 172 extra points, 7 field goals).
- 760, Paul Hornung, 1957-62, 1964-66 (9 seasons). (62 touchdowns, 190 extra points, 66 field goals).
- 546, Jim Taylor, 1958-65 (9 seasons). (91 touchdowns).
- 455, Fred Cone, 1951-57 (7 seasons). (16 touchdowns, 200 extra points, 53 field goals).

**Most Points (one season) —**

- \*176, Paul Hornung, 1960 (15 touchdowns, 41 extra points, 15 field goals).
- 146, Paul Hornung, 1961 (10 touchdowns, 41 extra points, 15 field goals).
- 138, Don Hutson, 1942 (17 touchdowns, 33 extra points, 1 field goal).

**Most Points (one game) —**

- 33, Paul Hornung, Green Bay vs. Baltimore (4 touchdowns, 6 extra points, 1 field goal).
- 31, Don Hutson, Green Bay vs. Detroit, 1945 (4 touchdowns, 7 extra points).
- 30, Paul Hornung, Green Bay vs. Baltimore, 1965 (5 touchdowns).

**Most Points (one quarter) —**

- 29, Don Hutson, Green Bay vs. Detroit, October 7, 1945.

**Most Consecutive Games Scoring One or More Points —**

- 41, Don Hutson (2 in 1940, 12 in 1941, 11 in 1942, 10 in 1943, 6 in 1944).

**Most Touchdowns —**

- \*105, Don Hutson, 1935-45 (11 seasons).
- 91, Jim Taylor, 1958-66 (9 seasons).
- 62, Paul Hornung, 1957-62, 1964-66 (9 seasons).
- 50, Verne Lewellen, 1924-32 (9 seasons).

\*—League record.

**SCORING (continued)****Most Touchdowns (one season) —**

- 19, Jim Taylor, 1962.
- 17, Don Hutson, 1942.
- 16, Jim Taylor, 1961.
- 15, Paul Hornung, 1960.
- 15, Jim Taylor, 1964.

**Most Field Goals —**

- 66, Paul Hornung (1957-62, 1964).
- 53, Fred Cone (1951-57).

**Most Field Goals (one season) —**

- 19, Don Chandler, 1967 (26 attempts).
- 17, Don Chandler, 1965 (26 attempts).
- 16, Fred Cone, 1955 (24 attempts).
- 16, Jerry Kramer, 1963 (33 attempts).
- 15, Paul Hornung, 1961 (22 attempts).
- 15, Paul Hornung, 1960 (28 attempts).

**Longest Field Goal —**

- 52 yards, Ted Fritsch, vs. New York Yanks.
- 52 yards, Paul Hornung, vs. Chicago Bears (Free Kick).

**Most Points After Touchdown —**

- 200, Fred Cone, 1951-57 (7 seasons).
- 190, Paul Hornung, 1957-62, 1964 (7 seasons).
- 172, Don Hutson, 1935-45 (11 seasons).

**Most Points After Touchdown (one season) —**

- 43, Jerry Kramer, 1963.
- 41, Paul Hornung, 1960, 1964.
- 41, Don Chandler, 1966.
- 39, Don Chandler, 1967.
- 38, Jerry Kramer, 1962.
- 37, Don Chandler, 1965.

**Most Points After Touchdown (one game) —**

- 8, Don Chandler, vs. Atlanta, 1966.
- 7, Paul Hornung, vs. Bears, 1962.
- 7, Don Hutson, vs. Detroit, 1945.
- 7, Paul Hornung, vs. Cleveland, 1961.
- 7, Jerry Kramer, vs. Philadelphia, 1962.
- 7, Don Chandler, vs. Cleveland, 1967.

**Most Consecutive Points After Touchdown —**

- 96, Paul Hornung, 1960-62.
- 62, Don Hutson, (5 games in 1942, 10 in 1943, 2 in 1944).

**Most Punts (one season) —**

- 74, Don Chandler, 1965.
- 72, Max McGee, 1954.
- 71, Jug Girard, 1950.

**Most Punts (one game) —**

- 11, Clive Rush, Green Bay vs. Pittsburgh Steelers, 1953 (451 yards).
- 11, Jug Girard, Green Bay vs. Chicago Bears, October 15, 1950 (418 yards).
- 10, Don Chandler, Green Bay vs. Dallas, 1965.
- 10, Jack Jacobs, Green Bay vs. Chicago Bears, November 14, 1948 (392 yards).
- 10, Max McGee, Green Bay vs. N. Y. Giants, 1959 (441 yards).

**Longest Punt —**

- 90 yards, Don Chandler, vs. San Francisco, 1965.
- 78 yards, Jack Jacobs, 1948.
- 75 yards, Boyd Dowler, 1961 and 1962.

**Best Punting Average (one season) —**

- 44.7 yards, Jerry Norton, 1963 (51 punts).
- 44.1 yards, Boyd Dowler, 1961 (37 punts).
- 43.5 yards, Jack Jacobs, 1947 (57 punts).
- 43.2 yards, Dick Deschaine, 1955 (56 punts).

**Most Touchdowns (one game) —**

- 5, Paul Hornung, vs. Baltimore, 1965.
- 4, Jim Taylor, vs. Bears, 1962.
- 4, Jim Taylor, vs. Eagles, 1962.
- 4, Don Hutson, vs. Detroit, 1945.
- 4, Paul Hornung, vs. Baltimore, 1961.
- 4, Jim Taylor, vs. Cleveland, 1961.
- 4, Donny Anderson vs. Cleveland, 1967

<sup>a</sup>—League record.

Slip into something quiet at your Ford Dealer's. LTD '71.

## PUNT RETURNS

### Most Punt Returns (one season) —

- 29, Billy Grimes, 1950 (returned 555 yds.)      24, Veryl Switzer, 1954 (returned 306 yds.).  
 26, Willie Wood, 1968 (returned 126 yds.).      24, Veryl Switzer, 1955 (returned 158 yds.).  
 25, Al Carmichael, 1957 (returned 190 yds.).

### Most Punt Returns (one game) —

- 5, Billy Grimes, Green Bay vs. Baltimore, November 5, 1950 (returned 75 yards).  
 5, Veryl Switzer, Green Bay vs. Baltimore, October 24, 1954 (returned 6 yards).  
 5, Willie Wood, Green Bay vs. Los Angeles, September 25, 1966 (returned 25 yards).

### Most Kickoff Returns (one season) —

- 33, Al Carmichael, 1956 (returned 927 yards).

### Most Kickoff Returns (one game) —

- 5, Al Carmichael, Green Bay vs. Baltimore, October 13, 1957 (116 yards).  
 5, Al Carmichael, Green Bay vs. San Francisco, November 23, 1953 (96 yards).  
 5, Billy Grimes, Green Bay vs. Detroit, November 27, 1952 (93 yards).

### Most Yards Returned on Kickoffs (one game) —

- 172, Travis Williams, Green Bay vs. Cleveland Browns, November 12, 1967 (2 returns).  
 166, Al Carmichael, Green Bay vs. Los Angeles Rams, October 11, 1953 (4 returns).  
 151, Travis Williams, Green Bay vs. Cardinals, 1967.  
 132, Al Carmichael, Green Bay vs. Los Angeles Rams, December 12, 1954 (4 returns).

## LENGTH OF SERVICE

### Most Years Head Coach —

- 31, Earl L. "Curly" Lambeau, Green Bay, 1919-49.  
 2, Earl L. "Curly" Lambeau, Chicago Cardinals, 1950-51.  
 2, Earl L. "Curly" Lambeau, Washington Redskins, 1952-53.  
 35 — Total.

### Most Years Active Player (with Packers) —

- 15, Bart Starr, 1956-70.

### Most Years Active Player —

- 15, Johnny "McNally" Blood (back), Duluth, Green Bay, Pittsburgh — 1925-39.  
 15, Bart Starr, QB, 1956-70.

### Most Consecutive Games Played —

- 173, Forrest Gregg, 1956, 58-69.  
 162, Willie Davis, 1958-69.  
 150, Boyd Dowler, 1959-69.

## DON HUTSON'S PASS RECEIVING

Most Passes Caught — (one season), 74; (one game), 14.

Most Touchdown Passes — (11 seasons), 100; (one season), 17; (one game), 3 (seven times).

Most Yards Gained Catching Passes — (11 seasons), 8,010; (one season), 1,211 (one game), 237.

Longest Completed Pass — 92 yards.

Shortest Completed Pass — 4 inches.

Total Points Scored — (11 seasons), 823; (one season), 138; (one game), 31.

Total Touchdowns Scored — 105.

Most Touchdowns — (one season), 17; (one game), 4.

Most Points After Touchdowns — 172 (11 seasons).

	Games	Rcvd.	Yards Gained	Lgst. Gain	Tds.	Games	Rcvd.	Yards Gained	Lgst. Gain	Tds.	
1935 ...	10	18	420	83	6	1941 ...	11	†58	738	45	*10
1936 ...	12	34	536	*87	9	1942 ...	11	74	*1211	73	*17
1937 ...	11	*41	552	78	7	1943 ...	10	47	776	79	11
1938 ...	10	32	548	54	9	1944 ...	10	58	866	55	9
1939 ...	11	34	*846	92	6	1945 ...	10	47	834	75	9
1940 ...	11	45	664	36	7	Total ...	118	†489	†8010	92	†100

\*—Set League Record. †—Tied League Record. ‡—League Record.

Mustang '71 . . . challenge to the great European road cars!

# GREEN BAY PACKERS TEAM RECORDS

## YARDS GAINED

### Most Yards Gained Passing (one season) —

2,846, 1951.	2,602, 1966.
2,758, 1967.	2,508, 1965.
2,688, 1952.	2,474, 1964.

### Most Yards Gained Passing (one game) —

- 423, Green Bay vs. Chicago Cardinals, November 1, 1942 (13 completions, 6 touchdowns).
- 422, Green Bay vs. St. Louis Cardinals, December 21, 1969 (23 completions, 6 touchdowns).
- 380, Green Bay vs. Detroit, October 26, 1952 (26 completions, 2 touchdowns).
- 334, Green Bay vs. Philadelphia, November 11, 1962 (19 completions, 1 touchdown).

## FIRST DOWNS

### Most First Downs (one season) —

- \*281, 1962 (151 rushing, 114 passing, 16 penalty).
- 274, 1961 (142 rushing, 115 passing, 17 penalty).

### Most First Downs (one game) —

- \*37, Green Bay vs. Philadelphia, November 11, 1962 (21 rushing, 15 passing, 1 penalty).
- 28, Green Bay vs. Los Angeles Rams, October 17, 1954 (14 rushing, 11 passing, 3 penalty).
- 28, Green Bay vs. New York, October 22, 1967 (19 rushing, 7 passing, 2 penalty).
- 28, Green Bay vs. Cleveland, November 12, 1967 (15 rushing, 11 passing, 2 penalty).
- 28, Green Bay vs. St. Louis, December 21, 1969, (6 rushing, 21 passing, 1 penalty).

### Fewest First Downs to Opponents (one game) —

- \*0, Green Bay vs. New York Giants, October 1, 1933 (Packers lost, 10-7) tied.

## FORWARD PASSING

### Most Passes Completed (one season) —

- 231, Green Bay, 1951 (attempted 478).
- 195, Green Bay, 1954 (attempted 412).

### Most Passes Attempted (season) —

- \*478, Green Bay, 1951 (completed 231).

### Best Passing Efficiency

- More than 250 — 60.7%, 1966 (193 completions in 318 attempts).
- More than 250 — 60.1%, 1962 (178 completions in 285 attempts).
- More than 250 — 59.1%, 1968 (in 318 attempts)
- More than 250 — 57.9%, 1964 (186 completions in 321 attempts).
- More than 250 — 57.8%, 1961 (177 completions in 306 attempts).

### Most Touchdown Passes (one season) —

- 28, Green Bay, 1942.
- 26, Green Bay, 1951.
- 26, Green Bay, 1952.

### Most Passes Had Intercepted (one game) —

- 8, Green Bay vs. New York Giants, November 21, 1948.

### Most Touchdown Passes (one game) —

- 6, Green Bay vs. Chicago Cardinals, November 1, 1942; and  
Green Bay vs. Detroit, October 7, 1945.

## SCORING

### Most Touchdowns (one season) —

- 53, 1962 (14 games).
- 49, 1961 (14 games).
- 46, 1963 (14 games).
- 44, 1964 (14 games).
- 43, 1966 (14 games).
- 41, 1960 (12 games).
- 41, 1942 (11 games).

# GREEN BAY PACKERS

## TEAM RECORDS (continued)

### SCORING (continued)

- Most Touchdowns Running (one season) —**  
39, 1962. 32, 1960. 31, 1961.
- Most Touchdowns Passing (one season) —**  
28, Green Bay, 1942 (11 games).  
26, Green Bay, 1951 (12 games).  
26, Green Bay, 1952 (12 games).
- Most Points After Touchdown (one season) —**  
52, 1962. 49, 1961. 43, 1963. 41, 1960. 41, 1964. 41, 1966.
- Most Field Goals (one season) —**  
19, 1967 (26 attempts).  
17, 1965 (37 attempts).  
16, 1963 (33 attempts).  
16, 1961 (24 attempts).  
16, 1955 (24 attempts).  
15, 1962 (20 attempts).
- Most Points (one season) —**  
415, 1962 (14 games).  
391, 1961 (14 games).  
369, 1963 (14 games).  
342, 1964 (14 games).
- Fewest Points (one season) —**  
80, Green Bay, 1922 (12 games).  
73, Green Bay, 1921 (10 games).
- Most Points Scored (one game) —**  
57, Green Bay vs. Detroit, October 7, 1945.  
56, Green Bay vs. Atlanta, October 23, 1965.  
55, Green Bay vs. Chicago Cardinals, 1942.  
55, Green Bay vs. Cleveland, 1967.
- Most Points (one game, both teams) —**  
87, Detroit (52) vs. Green Bay (35) November 22, 1951.  
83, Chicago Bears (52) vs. Green Bay (31) November 6, 1955.
- Most Points (one team, one quarter) —**  
\*41, Green Bay vs. Detroit (second quarter) October 7, 1945.  
35, Green Bay vs. Cleveland (first quarter) November 12, 1967.
- Most Touchdowns Rushing (one game) —**  
6, vs. Cleveland, 1961.  
6, vs. Pittsburgh, 1941.  
6, vs. Philadelphia, 1962.
- Most Points After Touchdown (one game) —**  
8, vs. Atlanta, 1966.  
7, vs. Chicago Cardinals, 1942.  
7, vs. Detroit, 1945.  
7, vs. Cleveland, 1961.  
7, vs. Philadelphia, 1962.  
7, vs. Cleveland, 1967.
- Most Touchdowns Passing (one game) —**  
6, Green Bay vs. Chicago Cardinals, November 1, 1942.  
6, Green Bay vs. Detroit, October 7, 1945.
- Most Touchdowns (one game) —**  
8, Green Bay vs. Detroit, October 7, 1945.  
8, Green Bay vs. Atlanta, October 23, 1966.

\*—League record.

Ford Dealers make a strong case for quiet . . . new '71 LTD.

# GREEN BAY PACKERS

## TEAM RECORDS (continued)

### PUNTING

#### Most Punts (one season) —

87, Green Bay, 1949.  
78, Green Bay, 1948.

#### Fewest Punts (one season) —

48, Green Bay, 1944.  
48, Green Bay, 1960.

### INTERCEPTIONS

#### Most Passes Intercepted By (one season) —

\*42, Green Bay, 1943 (opponents attempted 242).

#### Best Percentage of Interceptions By (one season) —

\*17.3, Green Bay, 1943 (opponents attempted 242).

#### Most Passes Intercepted By (one team, one game) —

\*9, Green Bay vs. Detroit, October 24, 1943.

#### Most Interceptions Returned for Touchdowns (one season) —

\*6, Green Bay, 1966 (intercepted 28).  
5, Green Bay, 1943 (intercepted 24).

#### Most Yards Interceptions Returned (one season) —

606, Green Bay, 1943 (average 14.3).

### CONSECUTIVE PERFORMANCES

#### Most Consecutive Victories —

12, Green Bay, 1928-29.

#### Most Consecutive Games Without Defeat —

23, Green Bay — 1928, 1929, 1930 (won 21, tied 2).

\*—League record.

## GREEN BAY PACKERS

### VS. OPPONENTS — LEAGUE PLAY ONLY

#### AMERICAN FOOTBALL CONFERENCE

##### EASTERN

	W	L	T
Baltimore	17	16	0
Boston	—	—	—
Buffalo	—	—	—
Miami	—	—	—
New York Jets	—	—	—

##### CENTRAL

	W	L	T
Cincinnati	—	—	—
Cleveland	6	4	0
Houston	—	—	—
Pittsburgh	18	7	—

##### WESTERN

	W	L	T
Denver	—	—	—
Kansas City	—	—	—
Oakland	—	—	—
San Diego	—	—	—

#### NATIONAL FOOTBALL CONFERENCE

##### EASTERN

	W	L	T
Dallas	6	0	0
New York Giants	19	15	2
Philadelphia	16	2	0
St. Louis	37	20	3
Washington	6	5	0

##### CENTRAL

	W	L	T
Chicago	54	42	6
Detroit	41	28	4
Green Bay	—	—	—
Minnesota	11	7	0

##### WESTERN

	W	L	T
Atlanta	4	0	0
Los Angeles	18	27	1
New Orleans	1	0	0
San Francisco	17	17	1

# GREEN BAY PACKERS RESULTS BY SEASONS

1919	
PACKERS	OPP.
53 Menominee	0
61 Marinette	0
54 New London	0
87 Sheboygan	0
76 Racine	6
33 Ishpeming	0
85 Oshkosh	0
53 Milwaukee A.C.	0
46 Chicago A.C.	0
17 Stambaugh	0
0 Beloit	6
565	12

Packers W. 10, L. 1, T. 0

1922	
PACKERS	OPP.
°0 Duluth	6
3 Cardinals	6
14 Rock Island	19
6 Racine	10
0 Milwaukee	0
0 Rock Island	0
3 Columbus	0
14 Marines	6
3 Racine	3
13 Milwaukee	0
10 Duluth	0
14 Racine	0
80	50

Packers W. 5, L. 4, T. 3

1925	
PACKERS	OPP.
*48 Iron Mountain	0
14 Hammond	0
14 Chicago Bears	10
0 Rock Island	3
31 Milwaukee	0
20 Rock Island	0
33 Rochester	13
6 Milwaukee	0
6 Cardinals	9
7 Dayton	0
0 Chicago Bears	21
0 Pottsville	31
7 Frankford	13
13 Providence	10
199	116

Packers W. 9, L. 5

1920	
PACKERS	OPP.
3 Chicago Boosters	3
56 Kaukauna	0
3 Stambaugh	0
25 Marinette	0
62 DePere	0
7 Beloit	0
9 Milw. All-Stars	0
3 Beloit	14
19 Menominee	7
26 Lapham A.C.	0
14 Stambaugh	0
227	24

Packers W. 9, L. 1, T. 1

1923	
PACKERS	OPP.
10 Hibbing	0
12 Marines	0
0 St. Louis	0
0 Chicago Bears	3
12 Milwaukee	0
3 Racine	24
3 St. Louis	0
10 Milwaukee	7
16 Racine	0
10 Duluth	0
19 Hammond	0
95	34

Packers W. 8, L. 2, T. 1

1926	
PACKERS	OPP.
79 Iron Mountain	0
21 Detroit	0
6 Chicago Bears	6
7 Milwaukee	0
7 Cardinals	13
0 Duluth	0
35 Racine	0
3 Cardinals	0
21 Milwaukee	0
14 Louisville	0
13 Chicago Bears	19
14 Frankford	19
7 Detroit	0
3 Chicago Bears	3
230	60

Packers W. 8, L. 3, T. 3

1921	
PACKERS	OPP.
13 Chicago Boosters	0
49 Rockford	0
40 Chicago Corn-H	0
7 Beloit	0
3 Rock Island	10
7 Minneapolis	6
43 Evansville	6
14 Hammond	7
3 Cardinals	3
0 Staleys	20
3 Racine	3
182	55

Packers W. 7, L. 2, T. 2

1924	
PACKERS	OPP.
°15 Ironwood	0
5 Chicago Bears	0
3 Duluth	6
0 Cardinals	3
16 Kansas City	0
17 Milwaukee	0
19 Marines	0
6 Racine	3
13 Duluth	0
17 Milwaukee	10
0 Chicago Bears	3
17 Kansas City	6
0 Racine	7
128	38

Packers W. 9, L. 4, T. 0

1927	
PACKERS	OPP.
*34 Milwaukee	0
14 Dayton	0
12 Cleveland	7
6 Chicago Bears	7
20 Duluth	0
13 Cardinals	0
13 N. Y. Yankees	0
*22 Milwaukee	7
6 Cardinals	6
6 Dayton	0
6 Chicago Bears	14
17 Frankford	9
169	50

Packers W. 9, L. 2, T. 1

° — Non-League game.

## RESULTS BY SEASON (continued)

## 1928

PACKERS	OPP.
*19 Minneapolis	0
9 Frankford	19
12 Chicago Bears	12
0 N. Y. Giants	6
20 Cardinals	0
16 Chicago Bears	6
17 Dayton	0
26 Pottsville	14
0 N. Y. Yankees	0
7 N. Y. Giants	0
0 Pottsville	26
7 Providence	7
0 Frankford	2
6 Chicago Bears	0

139 92  
Packers W. 7, L. 4, T. 3

## 1929

PACKERS	OPP.
*14 Portsmouth	0
9 Dayton	2
23 Chicago Bears	0
9 Cardinals	2
14 Frankford	2
24 Minneapolis	0
7 Cardinals	6
16 Minneapolis	6
14 Chicago Bears	0
12 Cardinals	0
20 New York	6
0 Frankford	0
25 Providence	0
25 Chicago Bears	0

212 24  
Packers W. 13, L. 0, T. 1

## 1930

PACKERS	OPP.
*46 Oshkosh	0
14 Cardinals	0
7 Chicago Bears	0
14 New York	7
27 Frankford	12
13 Minneapolis	0
19 Minneapolis	0
47 Portsmouth	13
13 Chicago Bears	12
6 Cardinals	13
6 New York	13
25 Frankford	7
37 Stapleton	7
0 Chicago Bears	21
6 Portsmouth	6

272 111  
Packers W. 10, L. 3, T. 1

\* — Non-League game.

† — World Championship game.

## 1931

PACKERS	OPP.
26 Cleveland	0
32 Brooklyn	6
7 Chicago Bears	0
27 New York	0
26 Cardinals	7
15 Frankford	7
48 Providence	20
6 Chicago Bears	2
26 Stapleton	0
13 Cardinals	21
14 New York	10
38 Providence	7
7 Brooklyn	0
6 Chicago Bears	7

291 94  
Packers W. 12, L. 2, T. 0

## 1932

PACKERS	OPP.
*45 Grand Rapids	0
15 Cardinals	7
0 Chicago Bears	0
13 New York	0
15 Portsmouth	10
2 Chicago Bears	0
13 Brooklyn	0
26 Stapleton	0
19 Cardinals	9
21 Boston	0
0 New York	6
7 Brooklyn	0
21 Stapleton	3
0 Portsmouth	19
0 Chicago Bears	9

197 63  
Packers W. 11, L. 3, T. 1

## 1933

PACKERS	OPP.
7 Boston	7
7 Chicago Bears	7
7 New York	14
17 Portsmouth	10
47 Pittsburgh	0
7 Chicago Bears	10
35 Philadelphia	9
14 Cardinals	6
0 Portsmouth	7
7 Boston	20
6 New York	17
10 Philadelphia	0
6 Chicago Bears	7

170 107  
Packers W. 6, L. 7, T. 1

## 1934

PACKERS	OPP.
*28 Fort Atkinson	7
19 Philadelphia	0
10 Chicago Bears	24
20 New York	6
0 Detroit	3
41 Cincinnati	0
15 Cardinals	0
14 Chicago Bears	27
10 Boston	0
3 New York	17
0 Cardinals	9
3 Detroit	0
0 Cardinals	6
21 St. Louis	14

184 119  
Packers W. 8, L. 6, T. 0

## 1935

PACKERS	OPP.
*49 LaCrosse	0
6 Cardinals	7 H
7 Chi. Bears	0 H
16 New York	7 H
27 Pittsburgh	0 H
0 Cardinals	3 M
13 Detroit	3 M
17 Chi. Bears	14 A
31 Detroit	7 H
10 Detroit	20 A
34 Pittsburgh	14 A
7 Cardinals	9 A
13 Philadelphia	6 A

230 96  
Packers W. 9, L. 4, T. 0

## 1936

PACKERS	OPP.
10 Cardinals	7 H
3 Chi. Bears	30 H
24 Cardinals	0 M
31 Boston	2 H
20 Detroit	18 H
42 Pittsburgh	10 M
21 Chi. Bears	10 A
7 Boston	3 A
38 Brooklyn	7 A
26 New York	14 A
26 Detroit	17 A
0 Cardinals	0 A
†21 Boston	6 A

269 124  
Packers W. 11, L. 1, T. 1

H — Home A — Away M — Milwaukee

## 1937

## PACKERS

*0 All-Stars	6 A
7 Cardinals	14 H
2 Chi. Bears	14 H
26 Detroit	6 H
34 Cardinals	13 M
35 Cleveland	10 A
35 Cleveland	7 H
14 Detroit	13 A
24 Chi. Bears	14 A
37 Philadelphia	7 H
0 New York	10 A
6 Washington	14 A

220 128  
Packers W. 7, L. 5, T. 0

## 1938

## PACKERS

26 Cleveland	17 H
0 Chi. Bears	2 H
28 Cardinals	7 M
24 Cardinals	22 A
7 Detroit	17 H
35 Brooklyn	7 M
20 Pittsburgh	0 H
28 Cleveland	7 A
24 Chi. Bears	17 A
28 Detroit	7 A
3 New York	15 A
17 New York	23 A

240 141  
Packers W. 8, L. 4, T. 0

## 1939

## PACKERS

14 Cardinals	10 H
21 Chi. Bears	16 H
24 Cleveland	27 H
27 Cardinals	20 M
26 Detroit	7 H
24 Washington	14 M
27 Chi. Bears	30 A
23 Philadelphia	16 A
28 Brooklyn	0 A
7 Cleveland	6 A
12 Detroit	7 A
†27 New York	0 M

260 153  
Packers W. 10, L. 2, T. 0

## 1940

## PACKERS

*45 All-Stars	28 A
27 Philadelphia	20 H
10 Chi. Bears	41 H
31 Cardinals	6 M
31 Cleveland	14 H
14 Detroit	23 H
24 Pittsburgh	3 M
7 Chi. Bears	14 A
28 Cardinals	7 A
3 New York	7 A
50 Detroit	7 A
13 Cleveland	13 A

283 183  
Packers W. 7, L. 4, T. 1

## 1941

## PACKERS

23 Detroit	0 H
24 Cleveland	7 M
17 Chi. Bears	25 H
14 Cardinals	13 M
30 Brooklyn	7 M
17 Cleveland	14 A
24 Detroit	7 A
16 Chi. Bears	14 A
17 Cardinals	9 H
54 Pittsburgh	7 A
22 Washington	17 A

258 120  
Packers W. 10, L. 1, T. 0  
14 Chi. Bears 33  
(Divisional Playoff)

## 1942

## PACKERS

28 Chi. Bears	44 H
17 Cardinals	13 A
38 Detroit	7 M
45 Cleveland	28 H
28 Detroit	7 A
55 Cardinals	24 H
30 Cleveland	12 A
7 Chi. Bears	38 A
21 New York	21 A
7 Philadelphia	0 A
24 Pittsburgh	21 M

300 215  
Packers W. 8, L. 2, T. 1

## 1943

## PACKERS

21 Chi. Bears	21 H
28 Cardinals	7 A
35 Detroit	14 H
7 Washington	33 M
27 Detroit	6 A
35 New York	21 A
7 Chi. Bears	21 A
35 Cardinals	14 M
31 Brooklyn	7 A
38 Phil-Pitt	28 A

264 172  
Packers W. 7, L. 2, T. 1

## 1944

## PACKERS

14 Brooklyn	7 M
42 Chi. Bears	28 H
27 Detroit	6 M
34 Card-Pitt	7 H
30 Cleveland	21 H
14 Detroit	0 A
0 Chi. Bears	21 A
42 Cleveland	7 A
0 New York	24 A
35 Card-Pitt	20 A
†14 New York	7 A

252 148  
Packers W. 8, L. 2, T. 0

## 1945

## PACKERS

*19 All-Stars	7 A
31 Chi. Bears	21 H
57 Detroit	21 M
14 Cleveland	27 H
38 Boston Yanks	14 M
33 Cardinals	14 H
24 Chi. Bears	28 A
7 Cleveland	20 A
28 Boston Yanks	0 A
23 New York	14 A
3 Detroit	14 A

277 180  
Packers W. 7, L. 4, T. 0

## 1946

## PACKERS

7 Chi. Bears	30 H
17 L. Angeles	21 M
19 Philadelphia	7 A
17 Pittsburgh	7 H
10 Detroit	7 M
7 Chi. Bears	10 A
19 Cardinals	7 A
9 Detroit	0 A
6 Cardinals	24 H
20 Washington	7 A
17 L. Angeles	38 A

148 158  
Packers W. 6, L. 5, T. 0

## 1947

## PACKERS

29 Chi. Bears	20 H
17 L. Angeles	14 M
10 Cardinals	14 H
27 Washington	10 M
34 Detroit	17 H
17 Pittsburgh	18 M
17 Chi. Bears	20 A
20 Cardinals	21 A
24 New York	24 A
30 L. Angeles	10 A
35 Detroit	14 A
14 Philadelphia	28 A

274 210  
Packers W. 6, L. 5, T. 1

## 1948

## PACKERS

31 Boston Yanks	0 A
7 Chi. Bears	45 H
33 Detroit	21 H
7 Cardinals	17 M
16 L. Angeles	0 H
7 Washington	23 M
20 Detroit	24 A
7 Pittsburgh	38 A
6 Chi. Bears	7 A
3 New York	49 M
10 L. Angeles	24 A
7 Cardinals	42 A

154 290  
Packers W. 3, L. 9, T. 0

## RESULTS BY SEASON (continued)

## 1949

## PACKERS

0	Chi. Bears	17 H
7	L. Angeles	48 H
19	N. Y. Bulldogs	0 A
17	Cardinals	39 M
7	L. Angeles	35 A
16	Detroit	14 M
3	Chi. Bears	24 A
10	Giants	30 H
7	Pittsburgh	30 M
21	Cardinals	41 A
0	Washington	30 A
7	Detroit	21 A

114

329

Packers W. 2, L. 10, T. 0

## 1950

## PACKERS

7	Detroit	45 H
35	Washington	21 M
31	Chi. Bears	21 H
31	N. Y. Yanks	44 A
14	Chi. Bears	28 A
17	N. Y. Yanks	35 H
21	Baltimore	41 A
14	L. Angeles	45 M
21	Detroit	24 A
25	S. Fran.	21 H
14	L. Angeles	51 A
14	S. Fran.	30 A

244

406

Packers W. 3, L. 9, T. 0

## 1951

## PACKERS

20	Chi. Bears	31 H
35	Pittsburgh	33 M
37	Philadelphia	24 H
0	L. Angeles	28 M
29	N. Y. Yanks	27 A
10	Detroit	24 H
7	Pittsburgh	28 A
13	Chi. Bears	24 A
35	Detroit	52 A
28	N. Y. Yanks	31 H
19	S. Fran.	31 A
14	L. Angeles	42 A

254

375

Packers W. 3, L. 9, T. 0

## 1952

## PACKERS

14	Chi. Bears	24 H
35	Washington	20 M
28	L. Angeles	30 M
24	Dallas	14 A
17	Detroit	52 H
12	Philadelphia	20 M
41	Chi. Bears	28 A
17	N. Y. Giants	3 A
42	Dallas	14 H
24	Detroit	48 A
27	L. Angeles	45 A
14	S. Fran.	24 A

295

302

Packers W. 6, L. 6, T. 0

## 1953

## PACKERS

0	Cleveland	27 M
13	Chi. Bears	17 H
20	L. Angeles	38 M
37	Baltimore	14 H
14	Pittsburgh	31 A
35	Baltimore	24 A
21	Chi. Bears	21 A
7	Detroit	14 H
7	S. Fran.	37 M
15	Detroit	34 A
14	S. Fran.	48 A
17	L. Angeles	33 A

200

338

Packers W. 2, L. 9, T. 1

## 1954

## PACKERS

20	Pittsburgh	21 H
3	Chi. Bears	10 H
17	S. Fran.	23 M
35	L. Angeles	17 M
7	Baltimore	6 A
37	Philadelphia	14 A
23	Chi. Bears	28 A
23	Baltimore	14 M
17	Detroit	21 H
24	Detroit	28 A
0	S. Fran.	35 A
27	L. Angeles	35 A

234

251

Packers W. 4, L. 8, T. 0

## 1955

## PACKERS

20	Detroit	17 H
24	Chi. Bears	3 H
20	Baltimore	24 M
30	L. Angeles	28 M
10	Cleveland	41 A
10	Baltimore	14 A
31	Chi. Bears	52 A
31	Cardinals	14 H
27	S. Fran.	21 M
10	Detroit	24 A
28	S. Fran.	7 A
17	L. Angeles	31 A

258

276

Packers W. 6, L. 6, T. 0

## 1956

## PACKERS

16	Detroit	20 H
21	Chi. Bears	37 H
38	Baltimore	33 M
42	L. Angeles	17 M
21	Baltimore	28 A
7	Cleveland	24 M
14	Chi. Bears	38 A
16	S. Fran.	17 H
24	Detroit	20 A
24	Cardinals	21 A
20	S. Fran.	38 A
21	L. Angeles	49 A

264

342

Packers W. 4, L. 8, T. 0

## 1957

## PACKERS

21	Chi. Bears	17 H
14	Detroit	24 H
17	Baltimore	45 M
14	S. Fran.	24 M
24	Baltimore	21 A
17	New York	31 H
14	Chi. Bears	21 A
27	L. Angeles	31 M
27	Pittsburgh	10 A
6	Detroit	18 A
17	L. Angeles	42 A
20	S. Fran.	27 A

218

311

Packers W. 3, L. 9, T. 0

## 1958

## PACKERS

20	Chi. Bears	34 H
13	Detroit	13 H
17	Baltimore	24 M
21	Washington	37 A
38	Philadelphia	35 H
0	Baltimore	56 A
10	Chi. Bears	24 A
7	L. Angeles	20 H
12	S. Fran.	33 M
14	Detroit	24 A
21	S. Fran.	48 A
20	L. Angeles	34 A

193

382

Packers W. 1, L. 10, T. 1



## 1959

Packers	Attendance
9 Chicago Bears	6 H (32,150)
28 Detroit	10 H (32,150)
21 San Francisco	20 H (32,150)
6 Los Angeles	45 M (36,194)
21 Baltimore	38 A (57,557)
3 New York	20 A (68,837)
17 Chicago Bears	28 A (46,205)
24 Baltimore	28 M (25,521)
21 Washington	0 H (31,853)
24 Detroit	17 A (49,221)
38 Los Angeles	20 A (61,044)
36 San Francisco	14 A (55,997)
248	246

Packers W. 7, L. 5, T. 0

## 1960

Packers	Attendance
14 Chicago Bears	17 H (32,150)
28 Detroit	9 H (32,150)
35 Baltimore	21 H (32,150)
41 San Francisco	14 M (39,914)
19 Pittsburgh	13 A (30,155)
24 Baltimore	38 A (57,808)
41 Dallas	7 H (32,094)
31 Los Angeles	33 M (35,763)
10 Detroit	23 A (51,123)
41 Chicago Bears	13 A (46,406)
13 San Francisco	0 A (53,612)
35 Los Angeles	21 A (53,445)
332	209

Packers W. 8, L. 4, T. 0

## 1961

Packers	Attendance
13 Detroit	17 M (44,307)
30 San Francisco	10 H (38,669)
24 Chicago Bears	0 H (38,669)
45 Baltimore	7 H (38,669)
49 Cleveland	17 A (75,049)
33 Minnesota	7 A (42,007)
28 Minnesota	10 M (44,116)
21 Baltimore	45 A (57,641)
31 Chicago Bears	28 A (49,711)
35 Los Angeles	17 H (38,669)
17 Detroit	9 A (55,662)
20 New York	17 M (47,012)
21 San Francisco	22 A (55,722)
24 Los Angeles	17 A (49,169)
391	223

Packers W. 11, L. 3, T. 0

H — Home A — Away M — Milwaukee

## 1962

Packers	Attendance
34 Minnesota	7 H (38,669)
17 St. Louis	0 M (44,885)
49 Chicago Bears	0 H (38,669)
9 Detroit	7 H (38,669)
48 Minnesota	21 A (41,475)
31 San Francisco	13 M (46,010)
17 Baltimore	6 A (57,966)
38 Chicago Bears	7 A (48,753)
49 Philadelphia	0 A (60,671)
17 Baltimore	13 H (38,669)
14 Detroit	26 A (57,578)
41 Los Angeles	10 M (46,833)
31 San Francisco	21 A (53,769)
20 Los Angeles	17 A (60,389)
415	148

Packers W. 13, L. 1, T. 0

## 1963

Packers	Attendance
3 Chicago Bears	10 H (42,327)
31 Detroit	10 M (45,912)
31 Baltimore	20 H (42,327)
42 Los Angeles	10 H (42,327)
37 Minnesota	28 A (42,567)
30 St. Louis	7 A (32,801)
34 Baltimore	20 A (60,065)
33 Pittsburgh	14 M (46,293)
28 Minnesota	7 H (42,327)
7 Chicago Bears	26 A (49,166)
28 San Francisco	10 M (45,905)
13 Detroit	13 A (54,016)
31 Los Angeles	14 A (52,357)
21 San Francisco	17 A (31,031)
369	206

Packers W. 11, L. 2, T. 1

## 1964

Packers	Attendance
23 Chicago Bears	12 H (42,327)
20 Baltimore	21 H (42,327)
14 Detroit	10 A (59,203)
24 Detroit	24 H (42,327)
23 Minnesota	14 M (47,380)
24 San Francisco	14 M (47,380)
21 Baltimore	24 A (60,213)
17 Los Angeles	27 M (47,617)
42 Minnesota	13 A (44,278)
30 Detroit	7 H (42,327)
14 San Francisco	24 A (38,483)
28 Cleveland	21 M (48,065)
45 Dallas	21 A (44,971)
17 Chicago Bears	3 A (43,636)
24 Los Angeles	24 A (40,735)
342	245

Packers W. 8, L. 5, T. 1

\* — Non-League game.

# 58 RESULTS BY SEASON (continued)

## 1965

Packers	Attendance
41 Steelers	9 A (38,383)
20 Colts	17 M (48,130)
23 Bears	14 H (50,852)
27 49'ers	10 H (50,852)
31 Lions	21 A (56,712)
13 Cowboys	3 M (48,311)
10 Bears	31 A (45,664)
7 Lions	12 H (50,852)
6 Rams	3 M (48,485)
38 Vikings	13 A (47,426)
10 Rams	21 A (39,733)
24 Vikings	19 H (50,852)
42 Colts	27 A (60,238)
24 49'ers	24 A (45,710)
<b>316</b>	<b>224</b>

Packers W. 10, L. 3, T. 1

## 1967

Packers	Attendance
17 Lions	17 H (50,861)
13 Bears	10 H (50,861)
23 Falcons	0 M (49,467)
27 Lions	17 A (57,877)
7 Vikings	10 M (49,601)
48 Giants	21 A (62,585)
31 Cardinals	23 A (49,792)
10 Colts	13 A (60,238)
55 Browns	7 M (50,074)
13 49'ers	0 H (50,861)
17 Bears	13 A (47,513)
30 Vikings	27 A (47,693)
24 Rams	27 A (76,637)
17 Steelers	24 H (50,861)
<b>332</b>	<b>209</b>

Packers W. 9, L. 4, T. 1

## 1969

Packers	Attendance
17 Bears	0 H (50,861)
14 49'ers	7 M (48,184)
7 Vikings	19 A (60,740)
28 Lions	17 A (58,384)
21 Rams	34 A (78,947)
28 Falcons	10 H (50,861)
38 Steelers	34 A (46,403)
6 Colts	14 A (60,238)
7 Vikings	9 M (48,321)
10 Lions	16 H (50,861)
20 Giants	10 M (48,156)
7 Browns	20 A (82,137)
21 Bears	3 A (45,216)
45 Cardinals	28 H (50,861)
<b>269</b>	<b>221</b>

Packers W. 8, L. 6, T. 0

## 1966

Packers	Attendance
24 Colts	3 M (48,650)
21 Browns	20 A (83,943)
24 Rams	13 H (50,861)
23 Lions	14 H (50,861)
20 49'ers	21 A (39,290)
17 Bears	0 A (49,573)
56 Falcons	3 M (48,623)
31 Lions	7 A (56,954)
17 Vikings	20 H (50,861)
13 Bears	6 H (50,861)
28 Vikings	16 A (47,426)
20 49'ers	7 M (48,725)
14 Colts	10 A (60,238)
27 Rams	23 A (72,416)
<b>335</b>	<b>163</b>

Packers W. 12, L. 2, T. 0

## 1968

Packers	Attendance
30 Eagles	13 H (50,861)
13 Vikings	26 M (49,346)
17 Lions	23 H (50,861)
38 Falcons	7 A (58,850)
14 Rams	16 M (49,646)
14 Lions	14 A (57,302)
28 Cowboys	17 A (74,604)
10 Bears	13 H (50,861)
10 Vikings	14 A (47,644)
29 Saints	7 M (49,644)
27 Redskins	7 A (50,621)
20 49'ers	27 A (47,218)
3 Colts	16 H (50,861)
28 Bears	27 A (46,435)
<b>281</b>	<b>227</b>

Packers W. 6, L. 7, T. 1



H — Home    A — Away    M — Milwaukee

**For a heavy day...**



**Or a heavy date...**



**One Ford is all you need.  
Works like a truck, rides like a car.  
'71 pickup at Ford Dealers now.**

# GREEN BAY PACKERS RESULTS BY SERIES

## SHRINE GAME RESULTS

### UPPER MIDWEST SHRINE GAMES (Record 10-10-1)

	Attendance		Attendance
1950 Packers 16; Colts	14 (17,191)	1960 Packers 35; Bears	21 (35,118)
1951 Packers 10; Eagles	14 (19,282)	1961 Packers 24; Bears	14 (42,560)
1952 Packers 0; Giants	7 (22,000)	1962 Packers 35; Bears	21 (44,326)
1953 Packers 23; Steelers	26 (16,859)	1963 Packers 26; Bears	7 (44,592)
1954 Packers 27; Giants	38 (17,000)	1964 Packers 21; Bears	7 (46,920)
1955 Packers 37; Cardinals	38 (18,000)	1965 Packers 31; Bears	14 (47,066)
1956 Packers 27; Eagles	6 (12,138)	1966 Packers 10; Bears	13 (47,034)
1957 Packers 16; Eagles	13 (17,101)	1967 Packers 18; Bears	0 (47,126)
1958 Packers 0; Steelers	3 (17,294)	1968 Packers 7; Bears	10 (47,127)
1959 Packers 16; Bears	19 (28,286)	1969 Packers 9; Bears	19 (47,127)
		1970 Packers 6; Bears	6 (47,298)

### BISHOP'S CHARITIES RESULTS (Record 8-1-1)

	Attendance		Attendance
1961 Packers 20; Giants	17 (33,452)	1965 Packers 44; Giants	7 (50,837)
1962 Packers 20; Giants	17 (38,669)	1966 Packers 17; Steelers	6 (50,861)
1963 Packers 24; Giants	17 (42,327)	1967 Packers 31; Steelers	20 (50,861)
1964 Packers 34; Giants	10 (42,327)	1968 Packers 14; Giants	15 (50,861)
		1969 Packers 22; Giants	21 (50,861)
		1970 Packers 31; Giants	31 (56,263)

### PACKERS vs. COLLEGE ALL-STARS (CHICAGO) (Record 6-2)

1937 — PACKERS, 0; ALL-STARS, 6
1940 — PACKERS, 45; ALL-STARS, 28
1945 — PACKERS, 19; ALL-STARS, 7
1962 — PACKERS, 42; ALL-STARS, 20
1963 — PACKERS, 17; ALL-STARS, 20
1966 — PACKERS, 38; ALL-STARS, 0
1967 — PACKERS, 27; ALL-STARS, 0
1968 — PACKERS, 34; ALL-STARS, 17

### PACKERS vs. PROFESSIONAL ALL-STARS (Record 1-0)

(Played at Los Angeles)  
1939 — PACKERS, 16; ALL-STARS, 7

### W. DIV. PLAY-OFF

PACKERS vs. COLTS (G.B.) (Record 2-1)	
1941 — PACKERS, 14; BEARS, 33	(43,425)
1965 — PACKERS, 13; COLTS, 10	(50,861)
1967 — PACKERS, 28; RAMS, 7, at Milw.	(48,861)

### CHAMPIONSHIP GAME RECORDS ON PAGE ONE



## GREEN BAY PACKERS FIRST DRAFT CHOICE

Year	Name	Position	School
1936	Russ Letlow	Guard	U. of San Francisco
1937	Eddie Jankowski	Fullback	U. of Wisconsin
1938	Cecil Isbell	Halfback	U. of Purdue
1939	Larry Buhler	Halfback	U. of Minnesota
1940	Hal Van Every	Halfback	U. of Minnesota
1941	George Paskvan	Fullback	U. of Wisconsin
1942	Urban Odson	Tackle	U. of Minnesota
1943	Richard Wildung	Tackle	U. of Minnesota
1944	Merv Pregulman	Center	U. of Michigan
1945	Walter Schlinkman	Fullback	Texas Tech
1946	John Strzykalski	Halfback	U. of Marquette
1947	Ernie Case	Quarterback	U.C.L.A.
1948	Earl (Jug) Girard	Halfback	U. of Wisconsin
1949	Stanley Heath	Quarterback	U. of Nevada
1950	Clayton Tonnemaker	Center	U. of Minnesota
1951	Robert Gain	Tackle	U. of Kentucky
1952	Vito (Babe) Parilli	Quarterback	U. of Kentucky
1953	Al Carmichael	Halfback	U. of S. California
1954	Art Hunter	Tackle	Notre Dame
1955	Tom Bettis	Linebacker	U. of Purdue
1956	Jack Losch	Halfback	U. of Miami
1957	Paul Hornung*	Quarterback	Notre Dame
1957	Ron Kramer	End	Michigan
1958	Dan Currie	Center	Michigan State
1959	Randy Duncan	Quarterback	Iowa
1960	Tom Moore	Halfback	Vanderbilt
1961	Herb Adderley	Halfback	Michigan State
1962	Earl Gros	Fullback	L.S.U.
1963	Dave Robinson	End	Penn State
1964	Lloyd Voss	Tackle	Nebraska
1965	Donnie Anderson	Halfback	Texas Tech
1965	Larry Elkins	End	Baylor
1966	Gale Gillingham	Tackle	Minnesota
1966	Jim Grabowski	Fullback	Illinois
1967	Bob Hyland	Center, Guard	Boston College
1967	Don Horn	Quarterback	San Diego State
1968	Fred Carr	Linebacker, Tight End	U. Tex. at El Paso
1968	Bill Lueck	Guard	Arizona
1969	Rich Moore	Def. Tackle	Villanova
1970	Mike McCoy	Def. Tackle	Notre Dame
1970	Rich McGeorge	Tight End	Elon

\*Bonus choice

## 1970 DRAFT SELECTIONS

	Pos.	Ht.	Wt.	School
1. Mike McCoy	DT	6-5	284	Notre Dame
(From Chicago)				
1. Rich McGeorge	TE	6-4	235	Elon
2. Al Matthews	DCB	5-11	190	Texas A & I
3. Jim Carter	LB	6-3	230	Minnesota
4. Ken Ellis	FL	5-10	190	Southern
4. Skip Butler	K	6-1	198	U. Texas (Arlington)
(From Baltimore)				
5. Cecil Pryor	DE	6-5	249	Michigan
6. Ervin Hunt	DB	6-2	190	Fresno State
7. Cleo Walker	C	6-3	210	Louisville
8. Tim Mjos	RB	6-2	205	North Dakota State
9. Bob Reinhard	G	6-2	240	Stanford
10. Russ Melby	DT	6-4	250	Weber State
10. Frank Patrick	TE	6-7	225	Nebraska
(From Washington)				
11. Dan Hook	LB	6-3	225	Humboldt State
12. Frank Foreman	FL	6-2	204	Michigan State
13. Dave Smith	RB	6-1	210	Utah
14. Bob Lints	G	6-3	250	Eastern Michigan
15. Mike Carter	FL	6-1	208	Sacramento State
16. Jim Heacock	DS	6-2	180	Muskingum
17. Larry Krause	RB	6-0	208	St. Norbert College

# 1970 PRE-SEASON CAPSULE SUMMARY

## OFF-SEASON RETIREMENTS

Willie Davis, 12 year veteran DE  
 Boyd Dowler, 11 year veteran WR  
 Forrest Gregg, 13 year veteran OT  
 Henry Jordan, 13 year Veteran DT

## TRADES

### A) Off-Season

Hyland, Caffey and Pitts to Chicago for  
 #1 Draft Choice (DT McCoy)  
 Fleming to Miami for WR Jack Clancy  
 Rowser to Pittsburgh for TE John Hilton  
 Draft choice to San Diego for TE Jacque MacKinnon

### B) Pre-Season

Adderley to Dallas for C Malcolm Walker and DE Clarence Williams  
 Winkler to Atlanta for C Ken Mendenhall  
 Draft choice to San Francisco for DE, DT, Kevin Hardy  
 Jones to Atlanta for cash

## 1969 VETERANS WHO DID NOT MAKE 1970 SQUAD

Adderley	Gregg	Lusteg	Stevens
Caffey	Jordan	Mercer	Vandersea
Davis	Fleming	Rule	Weatherwax
Dowler	Rowser	Winkler	R. Jones

## 1970 RESERVE SQUAD (TAXI SQUAD)

Dave Bradley, Guard  
 Jim Carter, LB  
 Mike Carter, WR  
 Jack O'Malley, G, T  
 Gordon Rule, DB  
 Gerry Warren, K  
 Forrest Gregg, OT

## ROOKIES WHO MADE ORIGINAL 1970 ROSTER

Ken Ellis, DB, (D4-70)  
 Ervin Hunt, DB, (D5-70)  
 Larry Krause, RB, (D17-70)  
 Al Matthews, DB, (D2-70)  
 Mike McCoy, DT, (D1A-70)  
 Rich McGeorge, TE, (D1B-70)  
 Frank Patrick, QB, (D10-70)  
 Cleo Walker, LB, C (D7-70)  
 C. Williams, DE, (D11-69)

# GREEN BAY PACKERS PRE-SEASON RESULTS

## 1954

PACKERS	OPP.
10 Cardinals	27 A
13 Browns	14 H
36 Steelers	14 A
13 Eagles	24 A
31 Redskins	3 A
28 Giants	38 M

## 1955

PACKERS	OPP.
31 Giants	24 A
7 Browns	13 A
14 Steelers	16 H
10 Eagles	24 A
31 Redskins	33 A
37 Cardinals	28 M

## 1956

PACKERS	OPP.
27 Eagles	6 M
17 Giants	13 H
21 Browns	20 A
17 Redskins	10 A
29 Cardinals	21 A

## 1957

PACKERS	OPP.
20 Cardinals	16 A
17 Cardinals	14 A
16 Eagles	13 M
13 Giants	10 A
21 Redskins	14 A
10 Steelers	10 A

## 1958

PACKERS	OPP.
0 Steelers	3 M
20 Eagles	17 H
41 Giants	20 A
14 Redskins	23 A
24 Cardinals	31 A

## 1959

PACKERS	OPP.
16 Bears	19 M
24 49'ers	17 A
45 Eagles	28 A
0 Giants	14 A
20 Redskins	13 A
13 Steelers	10 A

## 1960

PACKERS	OPP.
20 Steelers	13 A
16 Giants	7 A
35 Bears	7 M
35 Cardinals	14 H
28 Cowboys	23 A
41 Redskins	7 A

## 1961

PACKERS	OPP.
30 Dallas	7 A
31 Cardinals	7 A
24 Bears	14 M
20 Giants	17 H
31 Redskins	24 A

## 1962

PACKERS	OPP.
42 All-Stars	20 A
31 Cowboys	7 A
41 Cardinals	14 A
35 Bears	21 M
20 Giants	17 H
20 Redskins	14 A

## 1963

PACKERS	OPP.
17 All-Stars	20 A
27 Steelers	7 A
31 Cowboys	10 A
26 Bears	7 M
24 Giants	17 H
28 Redskins	17 A

## 1964

PACKERS	OPP.
7 Cardinals	20 A
24 Giants	10 H
21 Bears	7 M
35 Cowboys	3 A
17 Browns	20 A

## 1965

PACKERS	OPP.
44 N. Y. Giants	7 H
34 Bears	14 M
12 Cowboys	21 A
30 Cleveland	14 A
31 Cardinals	13 H

## 1966

PACKERS	OPP.
38 All-Stars	0 A
10 Bears	13 M
3 Cowboys	21 A
17 Steelers	6 H
37 Giants	10 M

## 1967

PACKERS	OPP.
27 All-Stars	0 A
31 Pittsburgh	20 H
18 Bears	0 M
20 Cowboys	3 A
30 Browns	21 A
31 Giants	14 H

## 1968

PACKERS	OPP.
34 All-Stars	17 A
14 Giants	15 H
7 Bears	10 M
31 Cowboys	27 A
21 Steelers	17 M
31 Browns	9 A

## 1969

PACKERS	OPP.
22 Giants	21 H
9 Bears	19 M
13 Cowboys	31 A
27 Browns	17 A
31 Steelers	19 H
38 Falcons	24 A

## 1970

PACKERS	OPP.
31 Giants	31 H
6 Bears	6 M
35 Cowboys	34 A
37 Raiders	7 A
10 Bengals	10 M
34 Bills	0 H

1969

## GREEN BAY PACKERS

## GAME BY GAME OFFENSIVE STATISTICS

## RUSHING

Game	Scores GB-Opp.	Total Offense		Total Yds.	1st Dns. Rush	Net Yds. Rush	Att. Rush	Ave. Yds. Per Rush
		1st Dns.	Off. Plays					
9/21 Bears at GB	17-0	18	59	286	13	196	43	4.6
9/28 49'ers at Milw.	14-7	17	60	269	5	135	32	4.2
10/5 Vikings at Mpls.	7-19	16	63	173	7	108	24	4.5
10/12 Lions at Det.	28-17	23	61	308	10	121	37	3.3
10/19 Rams at L. A.	21-34	15	48	189	2	38	19	2.0
10/26 Falcons at G.B.	28-10	26	67	337	16	241	43	5.6
11/2 Steelers at Pitt.	38-34	14	51	318	5	82	27	3.2
11/9 Colts at Balt.	6-14	16	57	318	4	93	29	3.2
11/16 Vikings at Milw.	7-9	10	49	225	4	87	26	3.3
11/23 Lions at G.B.	10-16	17	58	280	4	70	23	3.0
11/30 Giants at Milw.	20-10	16	55	274	8	141	39	3.6
12/7 Browns at Clev.	7-20	12	53	218	5	99	29	3.4
12/14 Bears at Chi.	21-3	14	46	363	6	173	29	6.0
12/21 Cards at G.B.	45-28	28	66	530	6	108	32	3.2
14 Game Totals:	269-221	242	793	4068	95	1692	432	3.9
Per Game Ave.:	19.2-15.8	17.3	56.7	290	67.9	120.9	30.9	3.9

## PASSING

Game	Scores GB-Opp.	1st Dns. Pass	Net Yds. Pass	Att./ Comp./ TD	Int./ Fumb./ Lost	Thrown/ Yds. Lost
9/28 49'ers at Milw.	14-7	10	134	25/15/1	1/2/2	3/26
10/5 Vikings at Mpls.	7-19	6	65	31/18/1	1/3/2	8/63
10/12 Lions at Det.	28-17	8	187	20/13/2	0/1/1	4/47
10/19 Rams at L. A.	21-34	10	151	23/13/2	0/3/3	6/60
10/26 Falcons at G.B.	28-10	8	96	15/9/1	2/2/2	2/11
11/2 Steelers at Pitt.	38-34	9	236	24/13/1	3/3/2	0/0
11/9 Colts at Balt.	6-14	11	225	28/13/0	2/0/0	0/0
11/16 Vikings at Milw.	7-9	4	138	21/12/0	2/3/1	1/13
11/23 Lions at G.B.	10-16	12	210	30/17/1	1/4/4	5/47
11/30 Giants at Milw.	20-10	5	133	14/8/2	1/4/2	2/16
12/7 Browns at Clev.	7-20	6	119	23/10/1	1/1/0	1/3
12/14 Bears at Chi.	21-3	7	190	17/9/2	2/2/1	0/0
12/21 Cards at G.B.	45-28	21	422	34/23/5	1/1/1	0/0
14 Game Totals:	269-221	122	2376	319/182/20	17/31/21	34/30
Per Game Ave.:	19.2-15.8	8.8	169.7	22.8/13/1.5	1.3/2.2/1.5	2.4/2.1

1969

## GREEN BAY PACKERS

## GAME BY GAME DEFENSIVE STATISTICS

Game	Scores GB-Opp.	1st Dns.	Total Yds. Allowed	Yds. Rush	Plays Rush	Net Yds. Pass	Pass Att./ Comp.	Tkd./ Yds. Lost	Int. By/ Yds. Ret.
9/21 Bears at GB	17- 0	12	204	90	24	114	26/13	1/9	2/71
9/28 49'ers at Milw.	14- 7	17	376	112	31	264	33/15	2/18	1/11
10/5 Vikings at Mpls.	7-19	16	173	157	24	60	21/7	3/27	0/0
10/12 Lions at Det.	28-17	15	227	145	26	82	24/11	2/19	3/19
10/19 Rams at L. A.	21-34	21	312	137	37	175	28/17	3/22	0/0
10/26 Falcons at G.B.	28-10	19	219	164	35	55	19/9	6/49	1/80(IT)
11/2 Steelers at Pitt.	38-34	19	346	142	41	204	27/15	4/32	3/74
11/9 Colts at Balt.	6-14	17	251	120	36	131	25/15	2/14	3/55
11/16 Vikings at Milw.	7- 9	18	270	156	44	114	27/15	2/32	2/85(IT)
11/23 Lions at G.B.	10-16	15	285	188	39	97	24/12	3/11	1/0
11/30 Giants at Milw.	20-10	17	325	143	36	182	31/13	1/8	1/13
12/7 Browns at Clev.	7-20	17	347	210	38	137	24/10	0/0	0/0
12/14 Bears at Chi.	21- 3	11	196	158	37	38	24/8	4/24	2/33
12/21 Cards at G.B.	45-28	14	239	60	23	179	27/17	3/23	1/0
14 Game Totals:	269-221	224	3827	1982	485	1845	360/177	36/288	19/428
Per Game Ave.:	19.2-15.8	16	273.3	141.6	34.6	131.8	26.7/12.8	2.7/20.6	1.5/30.6



Everything that made it No. 1 and a whole lot more . . . totally new Mustang '71.

# GREEN BAY PACKERS ALL-TIME ROSTER 1921-1969

Player — Position	College	Years	Player — Position	College	Years
Aberson, Cliff (B)	No College	1946	Brown, Tim (B)	Ball St.	59
Abrams, Nate (E)	No College	21	Brown, Tom (HB)	Maryland	64-68
Abramson, Geo. (T)	Minnesota	25	Bruder, Hank (B)	N'thwestern	31-39
Adams, Chet (T)	Ohio State	42-43	Bucchianeri, Mike (G)	Indiana	41, 44-45
Adderley, Herb (B)	Mich. St.	61-69	Buck, Cub (T)	Wisconsin	21-25
Adkins, Bob (B)	Marshall	40-41, 45-46	Buhler, Larry (B)	Minnesota	39-41
Afflis, Dick (G)	Nevada	51-54	Buland, Walt (T)	No College	24
Aggajanian, Ben (K)	New Mexico	1961	Bullough, Hank (G)	Mich. State	55, 58
Albrecht, Art (T)	Wisconsin	41	Bultman, Art (C)	Marquette	32-34
Aldridge, Ben (B)	Okl. A&M	53	Burris, Paul (G)	Oklahoma	49-51
Aldridge, Lionel (DE)	Utah State	63-70	Butler, Frank (G)	Mich. State	34-36, 38
Amundsen, Norm (G)	Wisconsin	57	Butler, Bill (B)	Chattanooga	59
Anderson, Bill (E)	Tennessee	65-66	Caffey, Lee Roy (LB)	Texas A&M	64-69
Anderson, Don (B)	Tex. Tech	66-70	Cahoon, Ivan (T)	Gonzaga	26-29
Apsit, Marger (B)	So. Calif.	32	Canadeo, Tony (B)	Gonzaga	41-43, 46-52
Ashmore, Roger (T)	Gonzaga	28-29	Cannava, Al (B)	Boston Col.	50
Bailey, Byron (B)	Wash. St.	53	Capp, Dick (LB)	Boston College	67
Baker, Frank (E)	N'thwestern	31	Capuzzi, Jim (B)	Cincinnati	55-56
Baker, Roy (B)	So. Calif.	28-29	Carry, Joe (G)	No College	21
Balaz, Frank (B)	Iowa	39-41	Carlson, Irv (G)	St. John	26
Baldwin, Al (E)	Arkansas	50	Carmichael, Al (B)	Southern Cal	53-58
Banet, Herb (B)	Manchester	37	Carpenter, Lew (B)	Arkansas	59-63
Barnes, Emery (E)	Oregon	56	Carr, Fred (LB)	UTEP	68-70
Barnes, Gary (E)	Clemson	62-63	Carroll, Leo (DE)	San Diego	68
Barnett, Solon (T)	Baylor	45-46	Carter, Joe (E)	SMU	42
Barrager, Nate (C)	So. Calif.	31-35	Casper, Charley (B)	TCU	34
Barrett, Jan (E)	Fresno State	63	Chandler, Don (K)	Florida	65-67
Barry, Al (G)	So. Calif.	54, 57	Christman, Paul (B)	Missouri	50
Barry, Norm (B)	Notre Dame	21	Cifelli, Gus (T)	Notre Dame	53
Barton, Don (B)	Texas	53	Cifers, Bob (B)	Tennessee	49
Basing, Myrt (B)	Lawrence	23-27	Clancy, Jack (WR)	Michigan	70
Baxter, Lloyd (T)	SMU	48	Claridge, Dennis (QB)	Nebraska	64-65
Beasley, John (B)	So. Dakota	24	Clemens, Cal (B)	So. Calif.	36
Beck, Ken (T)	Texas A&M	59-60	Clemens, Bob (B)	Georgia	55
Becker, Wayland (E)	Marquette	36-38	Clemens, Ray (G)	St. Mary's	47
Bell, Ed (G)	Indiana	47-49	Cloud, Jack (B)	Will. & Mary	50-51
Bennett, Earl (G)	H.-Simmons	46	Oody, Ed (B)	Purdue	47-48
Berezney, Paul (T)	Fordham	42-44	Coffey, Junior (RB)	Wash.	65
Berrang, Ed (E)	Villanova	52	Collins, Al (B)	LSU	51
Berry, Connie (E)	N. Carolina State	40	Comp, Irv (B)	St. Benedict	43-49
Bettencourt, L. (C)	St. Mary's	33	Comstock, Rudy (G)	Georgetown	31-33
Bettis, Tom (LB)	Purdue	55-61	Cone, Fred (B)	Clemson	51-57
Bilda, Dick (B)	Marquette	44	Cook, Jim (G)	Wisconsin	21
Biolo, John (G)	Lake Forest	39	Cook, Ted (E)	Alabama	48-50
Blaine, Ed (G)	Missouri	62	Coughlin, Frank (B)	Notre Dame	21
Bloodgood, El (B)	Nebraska	30	Coutre, Larry (B)	Notre Dame	50, 53
Boedeker, Bill (B)	Kalamazoo	50	Craig, Larry (B)	So. Carolina	39-49
Boerio, Chuck (LB)	Illinois	52	Crenshaw, Ted (E)	Auburn	48
Bookout, Billy (B)	Austin	55-56	Crenshaw, Leon (DT)	Tuskegee	68
Boone, J. R. (B)	Tulsa	53	Crimmins, Bernie (G)	Notre Dame	45
Borak, Fritz (E)	Creighton	38	Croft, Milburn (T)	Ripon	42-47
Borden, Nate (E)	Indiana	55-59	Cronin, Tom (B)	Marquette	22
Bowdoin, Jim (G)	Alabama	28-32	Crowley, Jim (B)	Notre Dame	25
Bowman, Ken (C)	Wisconsin	64-70	Crutcher, Tommy (LB)	TCU	64-67
Brackins, Chas. (B)	Prairie View	55	Cuff, Ward (B)	Marquette	47
Bradley, Dave (G)	Penn St.	69-70	Culver, Al (T)	Notre Dame	32
Bratkowski, Zeké (QB)	Georgia	63-68	Currie, Dan (LB)	Mich. State	58-64
Bray, Ray (G)	W. Michigan	52	Curry, Bill (LB)	Georgia Tech	65-66
Breen, Gene (LB)	Va. Tech	64	Cvercko, Andy (G)	N'thwestern	60
Brennan, John (G)	Michigan	39	Cyre, Hector (T)	Gonzaga	26-28
Brock, Charley (C)	Nebraska	39-47	Dahms, Tom (T)	San Diego St.	55
Brock, Lou (B)	Purdue	40-45	Dale, Carroll (E)	Va. Tech	65-70
Brown, Allen (E)	Mississippi	66-67	Daniell, Averell (T)	Pittsburgh	37
Brown, Bill (G)	Arkansas	53-56	Danjean, Ernie (G)	Auburn	57
Brown, Bob (T-E)	Ark. AM&N	66-70	Darling, Bernard (C)	Beloit	27-31

Player — Position	College	Years	Player — Position	College	Years
Davenport, Bill (B)	H. Simmons	31	Franta, Herb (T)	St. Thomas	30
Davidson, Ben (T)	Washington	61	Freeman, Bob (B)	Auburn	59
Davis, Harper (B)	Miss. State	51	Fries, Sherwood (G)	Colorado St.	43
Davis, Paul (G)	Marquette	22	Fritsch, Ted (B)	Stevens Pt.	42-50
Davis, Ralph (G)	Wisconsin	47-48	Frutig, Ed (E)	Michigan	41-45
Davis, Willie (E)	Grambling	60-69	Gantenbein, Milt (B)	Wisconsin	31-40
Dawson, Gib (B)	Texas	53	Gardella, Aug. (B)	Holy Cross	22
Deeks, Don (B)	Texas	48	Gardner, Milt (G)	Wisconsin	22-26
Dees, Bob (T)	Missouri SW	52	Garrett, Bob (B)	Stanford	54
Deschaine, Dick (E)	No College	55-57	Gassert, Ron (T)	Virginia	62
Dillon, Bobby (B)	Texas	52-59	Gatewood, Lester (B)	Baylor	46-47
Dilweg, Lavvie (E)	Marquette	27-34	Gavin, Fritz (E)	Marquette	21, 23
DiPietro, Ray (G)	Ohio State	50-51	Gillette, Jim (B)	Virginia	47
Disend, Leo (T)	Albright	40	Gillingham, Gale (G)	Minnesota	66-70
Dittrich, John (G)	Wisconsin	59	Girard, Jug (B)	Wisconsin	48-51
Doncarlos, J. (C)	Drake	31	Glick, Eddie (B)	Marquette	21-22
Douglas, George (C)	Marquette	21	Goldenberg, Chas. (G)	Wisconsin	33-45
Dowden, Steve (T)	Baylor	52	Goodnight, Clyde (E)	Tulsa	45-49
Dowler, Boyd (E)	Colorado	59-69	Gordon, Lou (T)	Illinois	36-37
Dreyer, Wally (B)	Wisconsin	50-51	Gorgal, Ken (B)	Purdue	56
Drulis, Chuck (G)	Temple	50	Grabowski, Jim (B)	Illinois	66-70
Duford, Wilfred (B)	Marquette	24	Gray, D. (E)	No College	23
Duhart, Paul (B)	Florida	44	Greeney, Norm (G)	Notre Dame	33
Dumoe, Bill (E)	Beloit	21	Greenfield, Tom (C)	Arizona	39-41
Dunaway, Dave (E)	Duke	68	Grege, Forrest (T)	SMU	56, 58-69
Dunn, Red (B)	Marquette	27-31	Gremminger, Hank (B)	Baylor	56-65
Dunnigan, Walt (E)	Minnesota	22	Griffen, Harold (C)	Iowa	28
Earhart, Ralph (B)	Texas Tech	48-49	Grimes, Billy (B)	Okla. A&M	50-52
Earme, Jug (C)	Monmouth	22-32	Grimm, Dan (G)	Colorado	63-65
Eason, Roger (T)	Oklahoma	49	Gros, Earl (B)	LSU	62-63
Ecker, Ed (T)	John Carroll	50-51	Grove, Roger (B)	Mich. State	31-35
Elliott, Burton (B)	Marquette	21	Gudasaus, Pete (G)	Murray St.	42, 45
Elliott, Carleton (E)	Virginia	51-54	Hackbart, Dale (B)	Wisconsin	60
Ellis, Ken (DB)	Southern U.	70	Hampton, Dave (RB)	Wyoming	69-70
Engelbretson, Tiny (G)	N'hwestern	34-41	Hanner, Dave (T)	Arkansas	52-64
Engelmann, W. (B)	So. Dakota St.	30-33	Hanny, Frank (T)	Indiana	30
Enright, Rex (B)	Notre Dame	26-27	Hanson, Roy (B)	Marquette	23
Erickson, Harry (B)	Wash-Jeff	23	Harding, Roger (C)	California	49
Estes, Roy (B)	Georgia	28	Hart, Doug (DB)	Arlington St.	64-70
Ethridge, Joe (T)	SMU	49	Harris, John (B)	Minnesota	30
Evans, John (B)	California	29	Hathcock, Dave (B)	Memphis State	66
Evans, Lon (G)	TCU	33-37	Haycraft, Ken (E)	Wisconsin	64-66
Evans, Dick (E)	Iowa	40, 43	Hayes, Norb (E)	Marquette	23
Falkenstein, Tony (B)	St. Mary's	43	Hayhoe, Bill (T)	USC	69-70
Faverty, Hal (C)	Wisconsin	52	Hays, Dave (E)	Notre Dame	21-22
Faye, Allen (E)	Marquette	22	Hays, George (E)	St. Bonaventure	53
Feathers, Beattie (B)	Tennessee	40	Heardon, Len (B)	Ripon	24
Felker, Art (E)	Marquette	51	Heardon, Tom (B)	Notre Dame	27-28
Ferguson, Howie (B)	No College	53-58	Heath, Stan (B)	Nevada	49
Ferry, Lou (T)	Villanova	49	Held, Paul (B)	San Diego St.	55
Finley, Jim (G)	Mich. State	42	Hellvin, Jerry (T)	Tulane	54-57
Finnin, Tom (T)	Detroit	57	Hendrian, Warren (B)	Pittsburgh	24
Fitzgibbons, Paul (B)	Creighton	30-32	Henry, Urban (T)	Georgia Tech	63
Flaherty, Dick (E)	Marquette	26-27	Herber, Arnie (B)	Regis	31-41
Flanigan, Jim (LB)	Pitt.	67-70	Hickman, Larry (B)	Baylor	60
Fleming, Marv (E)	Utah	63-69	Hill, Don (B)	Stanford	29
Flowers, Bob (C)	Texas Tech	42-48	Hilton, John (TE)	Richmond	70
Floyd, Bobby J. (B)	TCU	52, 54	Himes, Dick (OT)	Ohio St.	68-70
Folkins, Leo (E)	Washington	61	Hinkle, Clarke (B)	Bucknell	32-41
Ford, Len (E)	Michigan	58	Hinte, Tex (E)	Pittsburgh	41
Forester, Bill (LB)	SMU	53-63	Holler, Ed (LB)	So. Carolina	63
Forté, Aldo (G)	Montana	47	Horn, Don (QB)	San Diego St.	67-70
Forté, Bob (B)	Arkansas	46-53	Hornung, Paul (B)	Notre-D	57-62, 64-66
Francis, Joe (B)	Oregon St.	58-59	Howard, Lynn (B)	Indiana	21-22
Frankowski, Bob (G)	Washington	45	Howell, John (B)	Nebraska	38

Only Ford trucks have Twin-I-Beam front suspension.

## ALL-TIME ROSTER

Player — Position	College	Years	Player — Position	College	Years
Howton, Bill (E)	Rice	52-58	Kuusisto, Bill (G)	Minnesota	41-46
Hubbard, Cal (T)	Geneva	29-35	Laabs, Kermit (B)	Beloit	29
Hunt, Ervin (DB)	Fresno State	70	Ladrow, Wally (B)	No College	21
Hunter, Art (C)	Notre Dame	54	Lambeau, Curly (B)	Notre Dame	21-30
Hutson, Don (E)	Alabama	35-45	Lande, Cliff (E)	Carroll	21
Hyland, Bob (C)	Boston College	67-69	Lankas, Jim (B)	St. Mary's	43
Iman, Ken (C)	SE Missouri	60-63	Larson, Fred (C)	Notre Dame	25
Ingalls, Bob (C)	Michigan	42	Lauer, John (B)	Detroit	22
Isbell, Cecil (B)	Purdue	38-42	Lauer, Larry (C)	Alabama	56-57
Jacobs, Allen (B)	Utah	65	Lawrence, Jim (B)	TCU	39
Jacobs, Jack (B)	Oklahoma	47-49	Laws, Joe (B)	Iowa	34-45
Jacunski, Harry (E)	Fordham	39-44	Leaper, Wesley (E)	Wisconsin	21, 23
James, Claudis (FL)	Jackson St.	67-69	Lee, Bill (T)	Alabama	37-42, 46
Jankowski, Eddie (B)	Wisconsin	37-41	Lester, Darrell (C)	TCU	37-38
Jansante, Val (E)	Duquesne	51	Letlow, Russ (G)	S. Francisco	36-42, 46
Jean, Walter (G)	Missouri	25-26	Lewellen, Verne (B)	Nebraska	24-32
Jenison, Ray (T)	So. Dakota St.	31	Lidberg, Carl (B)	Minnesota	26-30
Jennings, Jim (E)	Missouri	55	Lipscomb, Paul (T)	Tennessee	45-49
Jeter, Bob (DB)	Iowa	63-70	Livingston, Dale (K)	West. Michigan	70
Johnson, Glen (T)	Arizona St.	49	Logan, Dick (T)	Ohio State	52-53
Johnson, Howard (G)	Georgia	40-41	Lollar, George (B)	Howard	28
Johnson, Joe (B)	Boston Col.	54-58	Long, Bob (E)	Wichita	64-67
Johnson, Marv (B)	San Jose St.	52-53	Loomis, Ace (B)	La Crosse	51-53
Johnson, Tom (T)	Michigan	52	Losch, John (B)	Miami (Fla.)	56
Johnson, Bill (E)	Minnesota	41	Lucky, Bill (T)	Baylor	55
Johnson, Chester (B)	Marquette	34-39	Ludtke, Norm (G)	Carroll	24
Johnstone, Art (B)	Lawrence	31	Lueck, Bill (G)	Arizona	68-70
Jones, Bruce (G)	Alabama	27-28	Luhn, Nolan (E)	Tulsa	45-49
Jones, Bob (G)	Indiana	34	Lusteg, Booth (K)	U. Conn.	69-70
Jones, Ron (TE)	UTEP	69	Lyle, Dewey (E)	Minnesota	22-23
Jones, Tom (G)	Bucknell	38	Lyman, Del (T)	UCLA	41
Jordan, Henry (T)	Virginia	59-69	MacAuliffe, John (B)	Beloit	26
Jorgenson, Carl (T)	St. Mary's	34	Matthews, Al (DB)	Texas A&I	70
Kahler, Bob (B)	Nebraska	41-44	McCoy, Mike (DT)	Notre Dame	70
Kahler, Royal (T)	Nebraska	42	McCrary, Hurdis (B)	Georgia	29-33
Katalinas, Leo (T)	Catholic U.	38	McDougal, Bob (B)	Miami (Fla.)	47
Keane, Jim (E)	Iowa	52	McDowell, John (G)	St. John's	64
Keefe, Emmett (T)	Notre Dame	21	McGaw, Walter (G)	Beloit	26
Kekeris, Jim (T)	Missouri	48	McGeary, Clink (T)	No. Dakota	50
Kell, Paul (T)	Notre Dame	39-40	McGee, Max (E)	Tulane	54, 57-67
Kelley, Bill (E)	Texas Tech	49	McGeorge, Rich (TE)	Elon	70
Kenyon, Crowell (G)	Ripon	23	McHan, Lamar (B)	Arkansas	59-60
Kercher, Bob (E)	Georgetown	44	McIlhenny, Don (B)	SMU	57-59
Kern, Bill (T)	Pittsburgh	29-30	McKay, Roy (B)	Texas	44-47
Keuper, Ken (B)	Georgia	45-47	McLaughlin, Leo (G)	Virginia	41
Kiesling, Walt (T)	St. Thomas	35-36	McLean, Ray (B)	No College	21
Kilbourn, Warren (T)	Michigan	39	McNally (Blood), John (B)	St. John	28-36
Kimmel, J. D. (T)	Houston	58	McPartland, Bill (T)	Texas	47
Kinard, Bill (B)	Mississippi	57-58	McPherson, For. (T)	Nebraska	43-45
King, Don (T)	Kentucky	56	Mack, "Red" (E)	Notre Dame	66
Kirby, John (B)	So. Calif.	49	Maddox, George (T)	Kansas St.	35
Klaus, Fee (C)	No College	21	Malone, Grover (B)	Notre Dame	21
Kliebhan, Adolph (B)	Milwaukee Trs.	21	Manley, Leon (G)	Oklahoma	50-51
Knafelc, Gary (E)	Colorado	54-62	Mann, Bob (E)	Michigan	50-54
Knutson, Gene (E)	Michigan	54-56	Mann, Erroll (K)	No. Dakota	68
Kostelnik, Ron (T)	Cincinnati	61-68	Marks, Larry (B)	Indiana	28
Kotal, Eddie (B)	Lawrence	25-29	Marshall, Rich (T)	Stephen F. Austin	65
Kovatch, John (E)	Notre Dame	47	Martell, Herman (E)	No College	21
Kramer, Jerry (G)	Idaho	58-68	Martinkovic, John (E)	Xavier	51-56
Kramer, Ron (E)	Michigan	57, 59-64	Mason, Joel (E)	W. Michigan	41-45
Kranz, Ken (B)	Milwaukee Trs.	49	Massey, Carlton (E)	Texas	57-58
Krause, Larry (RB)	St. Norbert	70	Masters, Norm (T)	Mich. State	57-64
Kresky, Joe (G)	Wisconsin	30	Mathys, Charley (B)	Indiana	22-26
Kuick, Stan (G)	Beloit	26	Mattos, Harry (B)	St. Mary's	36
Kurth, Joe (T)	Notre Dame	33-34	Matuszak, Marv (LB)	Tulsa	58

Torino offers options the competition doesn't have . . . costs less, too.

Player — Position	College	Years	Player — Position	College	Years
Mayer, Frank (G)	Notre Dame	27	Paulekas, Tony (C)	Wash.-Jeffer.	36
Meilinger, Steve (E)	Kentucky	58-60	Pearson, Lindell (B)	Oklahoma	52
Mendenhall, Ken (C)	Oklahoma	70	Peay, Francis (T)	Mo.	68-70
Mercein, Chuck (B)	Yale	67-69	Pelfrey, Ray (E)	E. Kentucky St.	51-52
Mercer, Mike (K)	No. Ariz.	68-69	Perkins, Don (B)	Platteville	43-45
Mestnik, Frank (B)	Marquette	63	Perry, Claude (T)	Alabama	27-35
Michaels, Walt (G)	Wash.-Lee	51	Pasonen, Dick (B)	Minn.-Duluth	60
Michalske, Mike (G)	Penn State	29-37	Peterson, Les (E)	Texas	32-35
Midler, Lou (G)	N'western	41	Peterson, Phil (B)	Wisconsin	32
Mihajlovich, Lou (B)	Indiana	54	Peterson, Ray (B)	San Francisco	37
Miketanic, Nick (G)	St. Norbert	37	Petition, John (B)	Notre Dame	57
Miller, Charles (C)	Purdue	38	Pitts, Elijah (B)	Phil. Smith	61-69
Miller, Don (B)	SMU	54	Pope, Bucky (E)	Catawba	68
Miller, Don (B)	Wisconsin	41-42	Powers, Sam (G)	No. Michigan	21
Miller, John (T)	Boston Col.	60	Pregulman, Merv (G)	Michigan	46
Miller, Paul (B)	So. Dakota	36-38	Prescott, Ace (E)	H. Simmons	46
Miller, Tom (E)	Hamp-Sydney	46	Priatko, Bill (G)	Pittsburgh	57
Mills, Tom (B)	Penn State	22-23	Pritko, Steve (E)	Villanova	49-50
Milton, Tom (E)	Lake Forest	24	Provo, Fred (B)	Washington	48
Minick, Paul (G)	Iowa	28-29	Psaltis, Jim (B)	So. Calif.	54
Mitchell, Chas. (B)	Tulsa	46	Purdy, Pid (B)	Beloit	26-27
Moje, Dick (E)	Loyola (Cal.)	51	Purnell, Frank (B)	Alcorn A&M	57
Molenda, Bo (B)	Michigan	29-32	Purman, Earl (C)	Ariz. State	57
Monnett, Bobby (B)	Mich. State	33-38	Quatse, Jess (T)	Pittsburgh	33
Moore, Allen (E)	Texas A&M	39	Quinlan, Bill (E)	Mich. State	59-62
Moore, Rich (DT)	Villanova	69-70	Radick, Ken (E)	Marquette	30-31
Moore, Tom (B)	Vanderbilt	60-65	Ranspot, Keith (E)	SMU	42
Moselle, Dom (B)	Superior	51-52	Ray, Baby (T)	Vanderbilt	38-48
Mosley, Russ (B)	Alabama	45-46	Regnier, Pete (B)	Minnesota	22
Moss, Perry (B)	Illinois	48	Reichardt, Bill (B)	Iowa	52
Mott, Norm (B)	Georgia	33	Reid, Floyd (B)	Georgia	50-56
Mulleneaux, Carl (E)	Utah St.	38-41, 45-46	Rhodymyre, Jay (C)	Kentucky	48-52
Mulleneaux, Lee (T)	Arizona State	38	Riddick, Ray (E)	Fordham	40-42, 46
Murray, Dick (T)	Marquette	21-24	Ringo, Jim (C)	Syracuse	53-63
Nadolney, Romanus (G)	Notre Dame	22	Roach, John (QB)	SMU	61-63
Nash, Tom (E)	Georgia	28-32	Roberts, Bill (B)	Dartmouth	56
Neal, Ed (G)	Tulane	45-51	Robinson, Bill (B)	Lincoln	52
Nichols, Ham (G)	Rice	51	Robinson, Dave (LB)	Penn State	63-70
Niemann, Walt (C)	Michigan	22-24	Rohrig, Herman (B)	Nebraska	41, 46-47
Nitschke, Ray (LB)	Illinois	58-70	Romine, Al (E)	Alabama	55, 58
Nix, Doyle (B)	SMU	55	Rosatti, Roman (T)	Michigan	24, 26-27
Norgard, Al (E)	Stanford	34	Rose, Al (E)	Texas	32-36
Norton, Jerry (DB)	SMU	63-64	Rose, Bob (C)	Ripon	26
Norton, Martin (B)	Carleton	25-28	Rosenow, Gus (B)	Wisconsin	21
Nussbaumer, Bob (B)	Michigan	46	Roskie, Ken (B)	So. Carolina	48
Oakes, Bill (T)	Haskell	21	Rote, Tobin (B)	Rice	50-56
O'Boyle, Harry (B)	Notre Dame	28-29, 32	Rowser, John (DB)	Michigan	67-69
O'Connor, Bob (T)	Stanford	35	Ruetz, Howard (T)	Loras	51-53
O'Donahue, Pat (E)	Wisconsin	55	Rule, Gordon (DB)	Dartmouth	68-69
O'Donnell, Dick (E)	Minnesota	24-30	Rush, Clive (E)	Miami (O.)	53
O'Malley, Jack (T)	U.S.C.	70	Ruzich, Steve (G)	Ohio State	52-54
Odson, Urban (T)	Minnesota	46-49	Salsbury, Jim (G)	UCLA	57-58
Ohlgren, Earl (E)	Minnesota	42	Sample, Chuck (B)	Toledo	42, 45
Olsen, Ralph (E)	Utah	49	Sandifer, Dan (B)	LSU	52-53
Olsonoski, Larry (G)	Minnesota	48-49	Sandusky, John (T)	Villanova	56
O'Malley, Bob (B)	Cincinnati	50	Sarafiny, Al (C)	St. Edward	33
Orlich, Dan (E)	Nevada	49-51	Sauer, George (B)	Nebraska	35-37
Owens, Henry (G)	Lake Forest	22	Saunders, Russ (B)	So. California	31
Palumbo, Sam (G)	Notre Dame	57	Schammel, Fran (G)	Iowa	37
Pannell, Ernie (T)	Texas A&M	41-42, 45	Scherer, Bernie (E)	Nebraska	36-38
Pape, Orrin (B)	Iowa	30	Schlinkman, Walt (B)	Texas Tech	46-50
Papit, John (B)	Virginia	53	Schmaehl, Art (B)	No College	21
Parilli, Babe (B)	Kentucky	52-53, 56-58	Schmidt, George (C)	Lewis	52-53
Paskvan, George (B)	Wisconsin	41	Schneidman, Herm (B)	Iowa	35-39
Patrick, Frank (QB)	Nebraska	70	Schoemann, Roy (C)	Marquette	38

## ALL-TIME ROSTER

Player — Position	College	Years	Player — Position	College	Years
Schroll, Chuck (B)	LSU	51	Tunnell, Emlen (B)	Iowa	59-61
Schuette, Carl (B)	Marquette	50-51	Tuttle, Dick (E)	Minnesota	27
Schultz, Charles (T)	Minnesota	39-41	Twedell, Fran (G)	Minnesota	39
Schwammell, Ade (T)	Ore. St.	34-37, 43-44	Uram, Andy (B)	Minnesota	38-43
Secord, Joe (C)	No College	22	Urban, Alex (E)	So. Carolina	41, 44-45
Seeman, George (E)	Nebraska	40	Usher, Ed (B)	Michigan	22, 24
Seibold, Champ (T)	Wisconsin	34-41	Vairo, Dominic (E)	Notre Dame	35
Self, Clarence (B)	Wisconsin	52, 54-55	VanderSea, Phil (B-LB)	Mass.	66, 68-70
Serini, Wash (G)	Kentucky	52	Van Every, Hal (B)	Minnesota	40-41
Shanley, Jim (B)	Oregon State	58	VanSickle, Clyde (C)	Arkansas	32-33
Shelly, Dexter (B)	Texas	32-33	VantHull, Fred (G)	Minnesota	42
Shirey, Fred (T)	Nebraska	40	Verøen, Carl (T)	Georgia Tech	57
Skeate, Gil (B)	Gonzaga	27	Vegara, George (E)	Notre Dame	25
Skibinski, Joe (G)	Purdue	55-56	Vogds, Evan (G)	Wisconsin	48-49
Skoglund, Bob (E)	Notre Dame	47	Voss, Lloyd (T)	Nebraska	64-65
Skoronski, Bob (T)	Indiana	56, 59-68	Voss, Walter (E)	Detroit	24
Sleight, Elmer (T)	Purdue	30-31	Wagner, Buffton (B)	No. Mich.	21
Smith, Ben (E)	Alabama	33	Walker, Cleo (C) (LB)	Louisville	70
Smith, Bruce (B)	Minnesota	45-48	Walker, Malcolm (C)	Rice	70
Smith, Earl (T)	Ripon	22	Walker, ValJoe (B)	SMU	53-56
Smith, Ed (B)	New York U.	37	Webber, Howard (E)	Kansas St.	28
Smith, Ernie (T)	So. Calif.	35-37, 39	Weatherwax, Jim (T)	L. A. State	66-69
Smith, Jerry (G)	Wisconsin	56	Wehba, Ray (E)	So. Calif.	44
Smith, Oscar (B)	Tex. Mines	48-49	Weisgerber, Dick (B)	Wilmette	38-40, 42
Smith, Rex (E)	Wis. Teachers	22	Wells, Don (E)	Georgia	46-49
Smith, Red (G)	Notre Dame	27-29	West, Pat (B)	So. Calif.	48
Smith, Warren (C)	Carleton	21	Wheeler, Lyle (E)	Ripon	21-23
Snelling, Ken (B)	UCLA	45	White, Gene (B)	Georgia	54
Sorenson, Glen (G)	Utah State	43-45	Whittenton, Jess (B)	Texas West	58-64
Sparlis, Al (G)	UCLA	46	Wildung, Dick (T)	Minnesota	46-51, 53
Spencer, Joe (T)	Okl. A&M	50-51	Wilkins, Ted (E)	Indiana	25
Spencer, Ollie (T)	Kansas	57-58	Williams, A. D. (E)	U. of Pacific	59
Spilis, John (WR)	No. Ill.	69-70	Williams, Clarence (DE)	Prairie View A&M	70
Spinks, Jack (G)	Alcorn A&M	55-56	Williams, Howard (B)	Howard U.	62-63
Stahlman, Dick (E)	Chicago	31-32	Williams, Dick (B)	Wisconsin	21
Stansauk, Don (T)	Denver	50-51	Williams, Perry (RB)	Purdue	69-70
Starr, Bart (B)	Alabama	56-70	Williams, Travis (HB)	Arizona State	67-70
Starret, Ben (B)	St. Mary's	42-45	Wilson, Ben (FB)	U.S.C.	67
Steen, Frank (E)	Rice	39	Wilson, John (B)	Dubuque U.	39
Steiner, Rebel (E)	Alabama	50-51	Wilson, Gene (E)	SMU	47-48
Stephenson, Dave (G)	W. Virginia	51-54	Wilson, Faye (B)	Texas A&M	31
Stevens, Bill (QB)	UTEP	68-69	Wilson, Milt (T)	Wis. Teachers	21
Stonebraker, John (E)	So. Calif.	42	Wimberly, Abner (E)	LSU	50-52
Sturgeon, Lyle (T)	No. Dakota St.	37	Winkler, Francis (DE)	Memphis St.	68-69
Sullivan, Walter (G)	Beloit	21	Winslow, Paul (E)	No. Car. Col.	60
Summerhays, Bob (B)	Utah	49-51	Winters, Arnold (T)	No College	41
Svendsen, Earl (C)	Minnesota	37-40	Witte, Earl (B)	Gus. Adolphus	34
Svendsen, George (C)	Minnesota	35-41	Wizbicki, Alex (B)	Holy Cross	50
Switzer, Veryl (B)	Kansas St.	54-55	Wood, Willie (B)	So. Calif.	60-70
Symank, John (B)	Florida	57-62	Woodin, Whitey (G)	Marquette	22-30
Szafaryn, Len (T)	No. Carolina	50, 53-56	Wright, Steve (T)	Alabama	64-66
Tassos, Damon (G)	Texas A&M	47-49	Wunsch, Harry (G)	Notre Dame	34
Taughar, Claude (B)	Marquette	22	Young, Glenn (B)	Purdue	56-57
Taylor, Jim (B)	LSU	58-66	Young, Bill (G)	Ohio State	29
Temp, Jim (E)	Wisconsin	57-60	Young, Paul (C)	Oklahoma	
Tenner, Bob (E)	Minnesota	35	Zarnas, Gus (G)	Ohio State	39-40
Teteak, Deral (G)	Wisconsin	52-56	Zatkoff, Roger (LB)	Michigan	53-56
Thomason, Bob (B)	VMI	51	Zeller, Joe (G)	Indiana	32
Thompson, Clarence (B)	Minnesota	39	Zoll, Carl (G)	No College	21-22
Thurston, Fred (G)	Valparaiso	59-67	Zoll, Dick (G)	Indiana	39
Timberlake, Geo. (C)	So. Calif.	55	Zoll, Martin (G)	No College	21
Tinsley, Pete (G)	Georgia	38-45	Zuidmulder, Dave (B)	St. Ambrose	29-31
Toburen, Nelson (LB)	Wichita	61-62	Zupek, Al (E)	Lawrence	46
Tollefson, Chuck (G)	Iowa	44-46	Zuver, Merle (C)	Nebraska	30
Tonnemaker, Clay (C)	Minnesota	50, 53-54			

## ALL-TIME SCORING — LEAGUE GAMES ONLY

	*Yrs.	Ts.	X.P.	F.G.	T.P.		*Yrs.	Ts.	X.P.	F.G.	T.P.
Don Hutson	35-45	105	172	7	823	Eddie Kotal	25-29	10	0	0	60
Paul Hornung	57-62, 64-66	62	190	66	760	Jim Grabowski	66-69	10	0	0	60
Jim Taylor	58-66	91	0	0	546	Red Dunn	27-31	1	46	2	58
Fred Cone	51-57	16	200	53	455	Herb Adderley	61-69	9	0	0	54
Ted Fritsch	42-50	37	62	36	392	Milt Gantenbein	31-39	9	0	0	54
Clarke Hinkle	32-41	43	31	28	373	Ward Cuff	47	0	30	7	51
Max McGee	54, 57-67	51	0	0	306	Myrt Basing	23-26	8	0	0	48
Verne Lewellen	24-32	50	1	0	301	Walter Schlinkman	46-48	8	0	0	48
Don Chandler	65-67	0	117	48	261	Arnold Herber	30-39	7	2	0	44
Bill Howton	52-58	43	0	0	258	Dave Hampton	69	7	0	0	42
Johnny Blood	29-33, 35-36	37	2	0	224	Don McIlhenny	57-59	7	0	0	42
Boyd Dowler	59-69	40	0	0	240	Babe Parilli	52-53, 57	7	0	0	42
Elijah Pitts	61-69	35	0	0	210	Carl Lidberg	26-30	7	0	0	42
Tony Canadeo	41-44, 46-52	31	0	0	186	George Sauer	35-36	7	0	0	42
Tobin Rote	50-56	30	0	0	180	Carlton Elliott	51-54	7	0	0	42
Jerry Kramer	58-68	0	90	29	177	Howie Ferguson	53-58	7	0	0	42
C. Dale	65-69	28	0	0	168	Al Carmichael	53-58	6	0	0	36
Tom Moore	60-65	27	0	0	162	Marty Norton	25-28	6	0	0	36
Joe Laws	34-45	22	0	0	132	Charles Mathys	22-26	5	0	1	33
Gary Knafele	54-62	21	0	0	126	Jack Cloud	50-51	5	0	0	30
Donny Anderson	66-69	20	0	0	120	Rex Enright	26-27	5	0	0	30
Curly Lambeau	21-27	12	19	6	109	Joe Johnson	54-58	5	0	0	30
Breezy Reid	50-55	18	0	0	108	Harry O'Boyle	28-32	5	0	0	30
Bob Mann	50-53	17	0	0	102	Ray Pelfrey	51	5	0	0	30
Hank Bruder	31-39	16	4	0	100	Al Rose	32-35	5	0	0	30
Lou Brock	41-45	16	2	0	98	Charles Sample	42-45	5	0	0	30
Andy Uram	38-43	16	2	0	98	Veryl Switzer	54-55	5	0	0	30
Bob Monnett	32-38	9	28	5	97	Tilly Voss	24-28	5	0	0	30
Paul Engebretsen	35-41	0	48	16	96	Pid Purdy	26-27	1	15	2	27
Travis Williams	67-69	15	0	0	90	Bill Reichardt	52	1	5	5	26
Ron Kramer	57-64	15	0	0	90	Chuck Mercein	67-69	2	7	2	25
LaVern Dilweg	27-34	14	2	0	86	Willie Wood	60-69	4	1	0	25
Clyde Goodnight	45-48	13	0	0	†80	Ade Schwammel	34-36, 44	0	7	6	25
Nolan Luhn	45-49	13	0	0	†80	Ted Cook	48-50	4	0	0	24
Carl Mulleneaux	38-41, 45-46	13	0	0	78	Steve Pritko	49-50	4	0	0	24
Bart Starr	56-69	13	0	0	78	Charlie Brock	39-47	4	0	0	24
Eddie Jankowski	37-41	11	4	1	73	Bobby Dillon	52-58	4	0	0	24
Harry Jacunski	39-44	12	0	0	72	Paul Duhart	44	4	0	0	24
Hurdis McCrary	29-32	12	0	0	72	Ralph Earhart	48-49	4	0	0	24
Marv Fleming	64-69	12	0	0	72	Bob Forte	46-53	4	0	0	24
Mike Mercer	68-69	0	35	12	71	Bob Long	64-67	4	0	0	24
Irv Comp	43-48	11	0	0	66	Paul Miller	36-37	4	0	0	24
Ernie Smith	35-39	0	45	7	66	Dick O'Donnell	25-28	4	0	0	24
Roger Grove	31-34	8	16	0	64	Bernard Scherer	36-38	4	0	0	24
Bo Molenda	29-32	9	10	0	64	Harold Van Every	40-41	4	0	0	24
Cecil Isbell	38-42	10	3	0	63	Earl Gros	62-63	4	0	0	24
Billy Grimes	50-51	10	0	0	60	Ed Cody	47-48	2	11	0	23
Cub Buck	22-25	0	24	12	60	Roy McKay	44-47	3	3	0	21
Weert Engelmann	30-33	10	0	0	60	Paul Fitzgibbons	30-32	3	1	0	19
Buckets Goldenberg	33-45	10	0	0	60	Al Baldwin	50	3	0	0	18

	*Yrs.	Ts.	X.P.	F.G.	T.P.		*Yrs.	Ts.	X.P.	F.G.	T.P.
Larry Coutre	50, 53	3	0	0	18	Henry Jordan	57-69	1	0	0	6
Jack Harris	25-26	3	0	0	18	Bobby Jack Floyd	52	1	0	0	6
Dutch Hendrian	24	3	0	0	18	Jim Keane	52	1	0	0	6
Tommy Mills	23	3	0	0	18	Ace Loomis	51-53	1	0	0	6
Don Perkins	43-45	3	0	0	18	Bob Summerhays	49-51	1	0	0	6
Jug Girard	48-51	3	0	0	18	Rebel Steiner	50-51	1	0	0	6
Dom Moselle	51-52	3	0	0	18	Wally Dreyer	50	1	0	0	6
Doug Hart	64-69	3	0	0	18	Paul Christman	50	1	0	0	6
Willie Davis	60-69	2	0	0	†16	Dan Orlich	49-50	1	0	0	6
Bob Adkins	40-41, 45-46	2	4	0	16	Nate Abrams	21	1	0	0	6
Booth Lusteg	69	0	12	1	15	Frank Baker	31	1	0	0	6
Bruce Smith	45-47	2	0	0	†14	Frank Balazs	39-40	1	0	0	6
Tom Brown	64-68	2	0	0	12	Bill Butler	59	1	0	0	6
Ray Nitschke	58-69	2	0	0	12	Law Carpenter	59-62	1	0	0	6
Bob Jeter	63-69	2	0	0	12	Paul Winslow	60	1	0	0	6
Ben Wilson	67-68	2	0	0	12	Lamar McHan	59-60	1	0	0	6
John Martinkovic	51-54	2	0	0	12	Norman Barry	21	1	0	0	6
Gus DeMoe	21	2	0	0	12	Wayland Becker	36	1	0	0	6
Dick Flaherty	26	2	0	0	12	Len Szafaryn	50-55	1	0	0	6
Cal Hubbard	29-36	2	0	0	12	Tiny Cahoon	26-28	1	0	0	6
Jack Jacobs	47-49	2	0	0	12	Joe Carter	42	1	0	0	6
Swede Johnston	35-36	2	0	0	12	Larry Craig	39-47	1	0	0	6
Larry Marks	28	2	0	0	12	Bernie Crimmins	45	1	0	0	6
Joel Mason	42-45	2	0	0	12	Jack Cronin	22	1	0	0	6
Mike Michalske	29-36	2	0	0	12	Jim Crowley	25	1	0	0	6
Tom Nash	30-32	2	0	0	12	Tony Falkenstein	43	1	0	0	6
Art Schmaehl	21	2	0	0	12	Moose Gardner	22	1	0	0	6
Herman Schneidman	36-37	2	0	0	12	Tom Greenfield	39-41	1	0	0	6
Ben Starret	42-45	2	0	0	12	Len Hearnden	24	1	0	0	6
Cowboy Wheeler	22-23	2	0	0	12	Stan Heath	49	1	0	0	6
Mule Wilson	31	2	0	0	12	Tubby Howard	21	1	0	0	6
Lee Roy Caffey	65-69	2	0	0	12	Bob Ingalls	42	1	0	0	6
Claudis James	67-69	2	0	0	12	Glenn Johnson	49	1	0	0	6
Ben Agajanian	61	0	8	1	11	Bruce Jones	28	1	0	0	6
Whitey Woodin	22-31	1	4	0	10	Bill Kelley	49	1	0	0	6
George Abramson	25	0	2	2	8	Ernie Pannell	41-42, 45	1	0	0	6
Hank Gremminger	56-65	1	0	0	6	Keith Ranspot	42	1	0	0	6
John Roach	61-62	1	0	0	6	Ray Riddick	40-42, 46	1	0	0	6
Steve Melinger	58-60	1	0	0	6	Ken Roskie	48	1	0	0	6
Jesse Whittenton	58-64	1	0	0	6	Russ Saunders	31	1	0	0	6
Gib Dawson	53	1	0	0	6	Zud Schammel	37	1	0	0	6
Val Joe Walker	53-54	1	0	0	6	Bud Svendsen	37-40	1	0	0	6
Dan Currie	58-64	1	0	0	6	Bill Anderson	65-66	1	0	0	6
Joe Francis	58-60	1	0	0	6	Don Horn	67-69	1	0	0	6
Don Barton	53	1	0	0	6	Erroll Mann	68	0	4	0	4
Ed Neal	47	1	0	0	6	Joe Ethridge	49	0	4	0	4
Jim Gillette	47	1	0	0	6	Chet Adams	42-43	0	0	1	3
Alex Urban	41	1	0	0	6	Dick Wildung	46-51, 53	0	0	0	†2
John Papit	53	1	0	0	6	Urban Odson	46-49	0	0	0	†2
J. R. Boone	53	1	0	0	6	Dick Weisgerber	38-40, 42	0	0	0	†2
Lionel Aldridge	63-69	1	0	0	6	Glen Sorenson	43-45	0	1	0	1

\*Yrs.—Years played. Ts.—Touchdowns. X.P.—Points after touchdowns. F.G.—Field goals. T.P.—Total points.  
†—Safety.



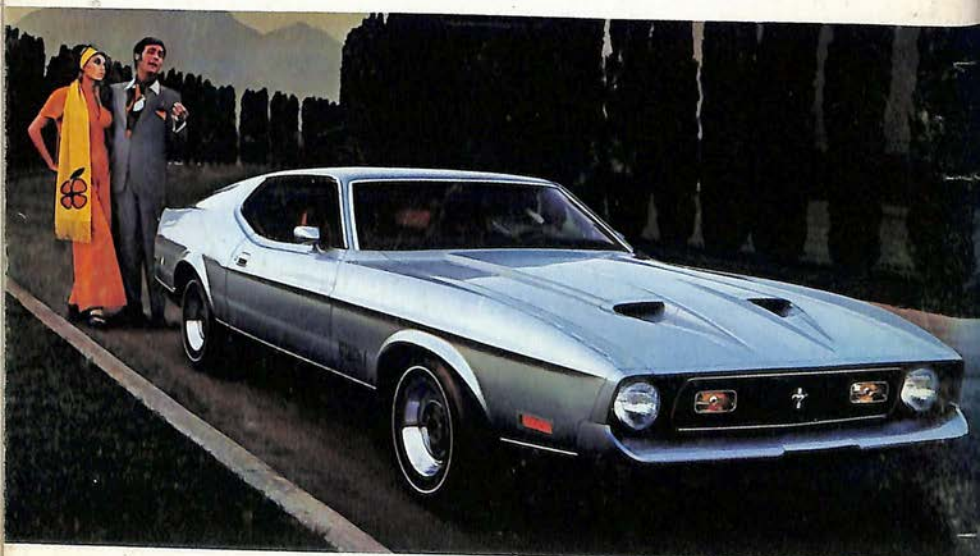
The simple machine  
is unchanged...  
except for  
2 more doors

Here's the 4-door Maverick...7 extra inches of wheelbase to give you more room in the back. And you still get all the simple virtues of the original "simple machine"...simple to own, simple to drive, simple to park.

New Maverick at your Ford Dealer

Totally new '71 Mustang  
challenges the great European  
road cars. Its stunning good looks tell you it  
should cost much more. Actually it's yours for just a fraction  
of a European road car's price. Seven engines to choose from.  
Plus a long list of options. All in a choice of six new  
models and three distinctive rooflines.

See your Ford Dealer today!



From: SELIG FORD CO. INC.  
7030 W. National Ave.  
West Allis, Wis. 53214